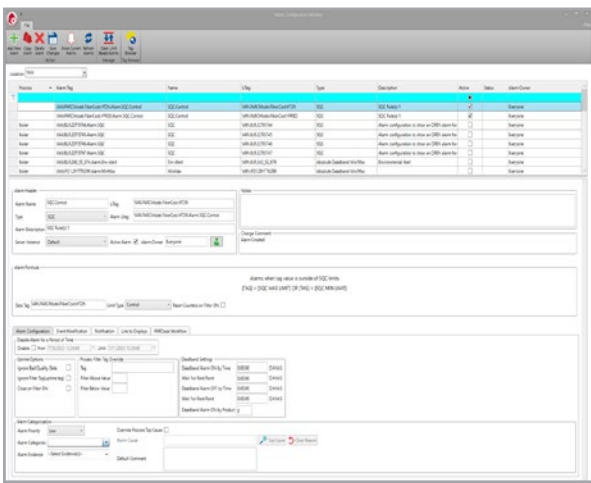


SOFTWARE RELEASE

What's New In PARCview 5.6?

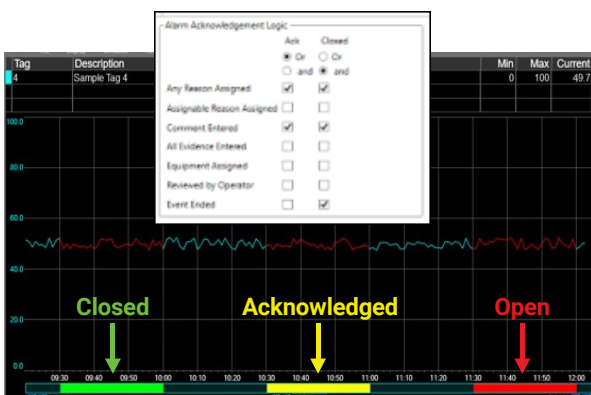
New Alarm Configuration Screen

- Includes default evidence for an alarm, split logic, new email messaging configuration for alerts, multi-edit of alarms, default alarm comment, copy alarm, and much more.



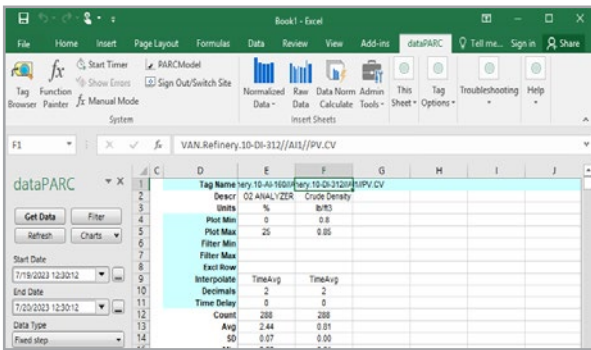
Expanded Acknowledgement States for Alarms

- A new "Acknowledged" state was added to alarms for events that have been partially addressed. Criteria for acknowledging and then closing an alarm can be customized. Acknowledged events will show as yellow and Closed events will show as green.



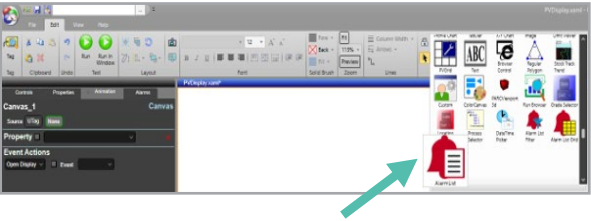
Excel Add-In Support for 64-bit Office

- The dataPARC Excel Add-in now supports 32-bit or 64 bit Office installations



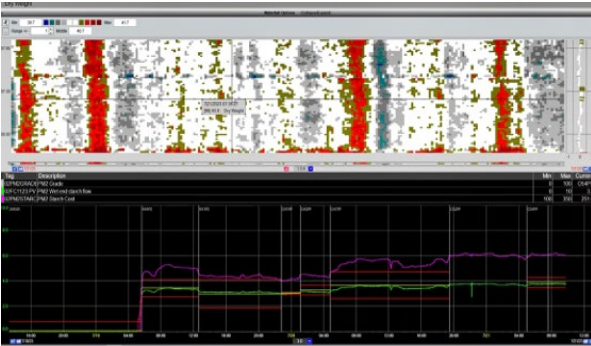
Alarm List added to PARCgraphics

- AlarmList, Alarm List Filter, and Alarm List Grid controls added under PARCview Custom Controls.



Waterfall Added to Trends

- Previously a separate display type, Waterfall is now integrated with Trend display.
- Smartmouse capability is also added.



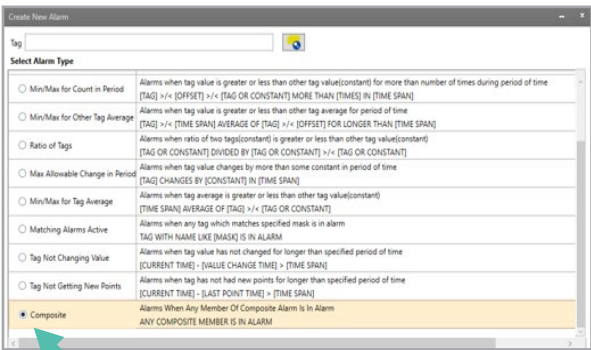
New Alarm List Format

- Complete Re-design of Alarm List display with customizable format and expanded filtering capabilities



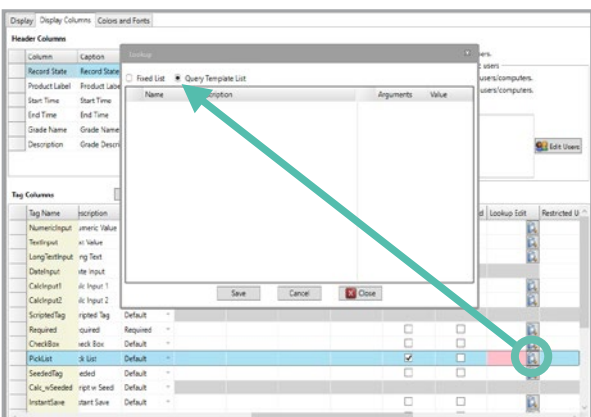
New Composite Alarm Type

- Allows building a tiered alarm based on several existing alarms.
- Members of the composite are assigned a priority affecting how simultaneous events are handled.



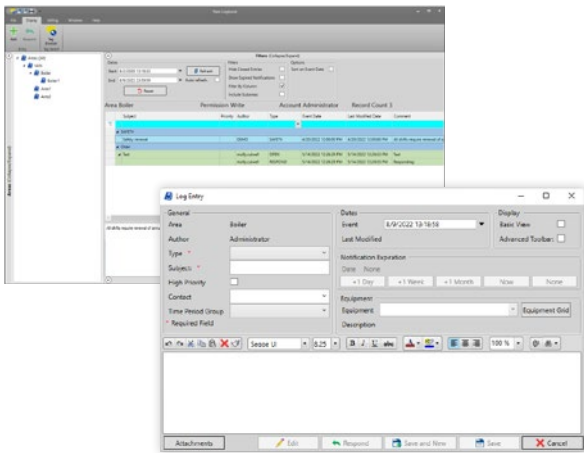
MDE Lookup List SQL Query

- Allows creating dropdowns in MDE from a query rather than hardcoding each one.



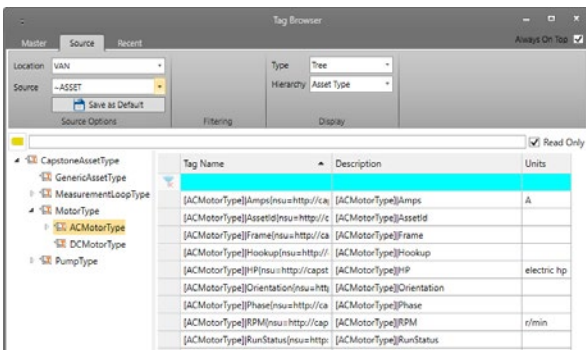
SOFTWARE RELEASE

What's New In PARCview 7.0?



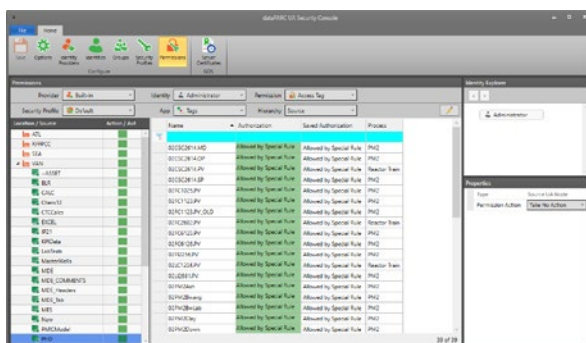
Logbook

- Logbook was completely rewritten in version 7.0
- New look and feel keeps all of the existing features and adds some new functionality
- Adds big blue filter bar to the top of the logbook grid which provides better searching
- New basic Mode which limits the options for a user editing logbook entries
- All new configuration menu to allow for easy logbook area creation and editing



Asset Management

- Find tags easily in a hierarchy
- Apply the same calculations to similar pieces of equipment
- Replicate a display for multiple pieces of the same type of equipment



Security

- Many enhancements to security architecture, including tag-based security

Architecture

- Simplified architecture by making a single connection point
- New cyber security measures like built in encryption

PARCmobile Update

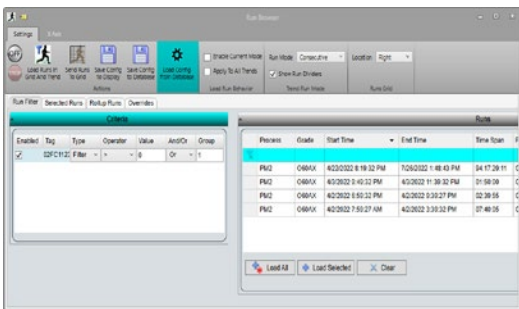
- Updated the website to use modern technology
- Updated the UI to include breadcrumbs and better menus

Time Zone Support

- Improved and customizable conversion of time zones from sites around the world

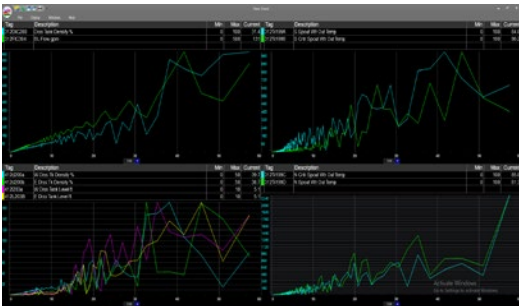
SOFTWARE RELEASE

What's New In PARCview 7.1?



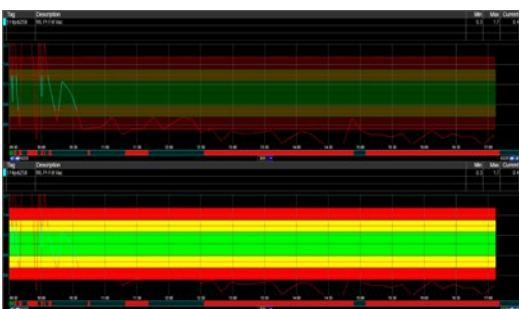
Advanced Filtering Capabilities in Run Browser

- Criteria Section added to allow filtering based on multiple tags
 - Save filters for future use
 - Easily find key runs with advanced order and sorting
- » Click on Criteria header to show panel, drag tags into panel to filter or divide runs



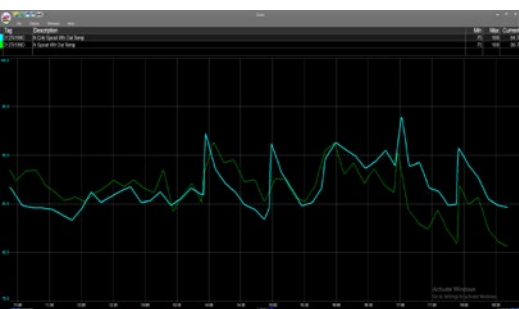
FFT Improvements

- Improved troubleshooting and root-cause analysis
- Multi-trend friendly with support for zoom and sync
- Settings remain in the same PARCview session
- Additional Support for minute ranges



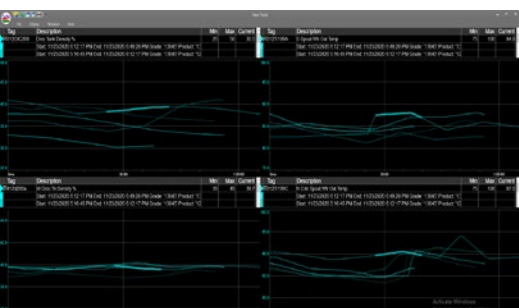
Control Chart Zone Coloring

- Apply color shading for SPC zones 1, 2 and 3
- » To show, right click on tag in tag grid, select limits, select Enable Limit Zones



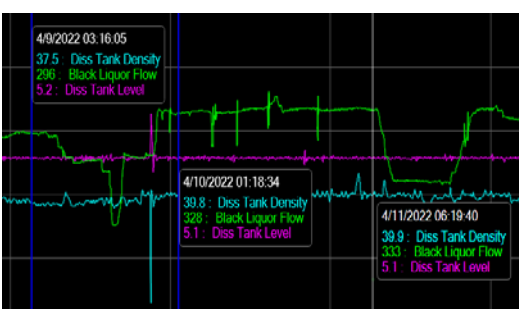
Highlight the Active Tag From Tag Info Grid

- Easier identification of the active tag from tag Info Grid
 - The trend of this tag is emphasized in the plot
- » Select tag in tag grid to highlight, select again to unhighlight



Highlight the Selected Batch

- Easier identification of the selected batch
 - The trend from this batch is emphasized and get the brightest color of the gradient
- » Select tag in tag grid to highlight, select again to unhighlight



Smartmouse Pinning

- Easily annotate your trends by pinning smartmouse to a trend
 - Pins persist to cloned trends
- » 'Shift' & Click to pin the smart mouse
- » Move pin by holding 'Ctrl', click & drag blue line to new location

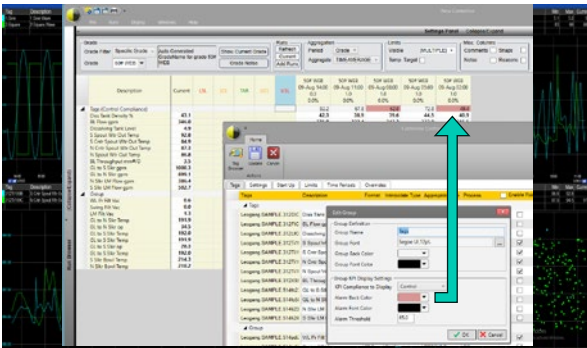


Manufacturing Applications

- Trigger PARCview Workflows based on alarm events
- Displays/Reports can be distributed based on schedule or event triggers
- Delivers the right information to the right people at the right time

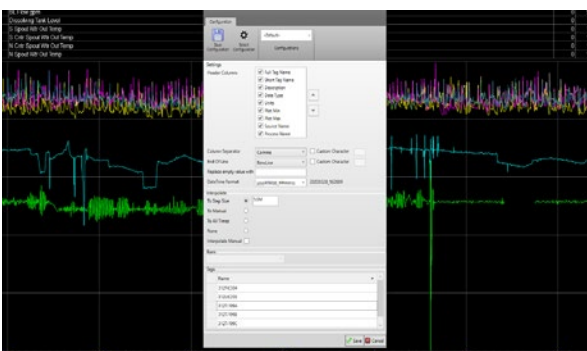
SOFTWARE RELEASE

What's New In PARCview 7.2?



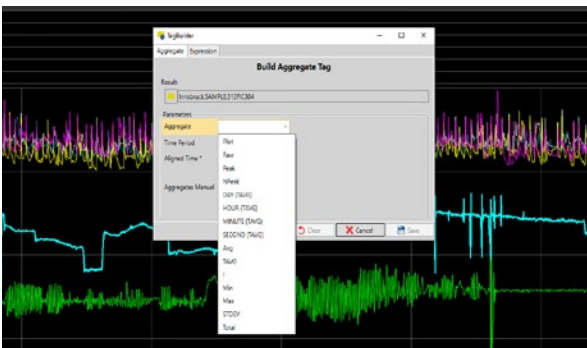
Centerline KPI

- Added functionality in Centerline to easily display group KPIs based on SQC limit compliance.
 - Centerline can show compliance for tag groups and individual tags. This makes it even easier to see at a glance which areas are out of compliance and begin troubleshooting by identifying out of compliance tags.
- » Configure in the Edit Group Window



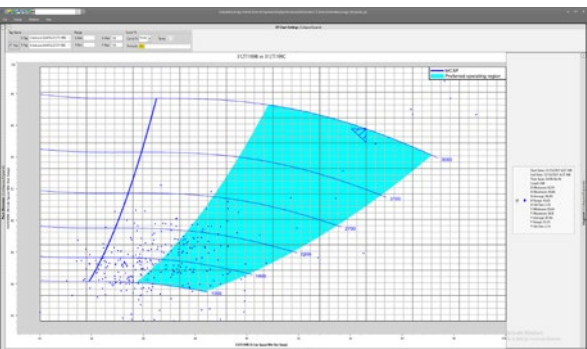
Trend Export to Text File Enhancements

- Additional options have been added to export data in customizable formats, with specific interpolation settings.
 - Data export configurations can be saved to facilitate repeat exports of the same format, perhaps to be sent to a third party interface.
- » Enable through trend right click menu > Export > Export To File



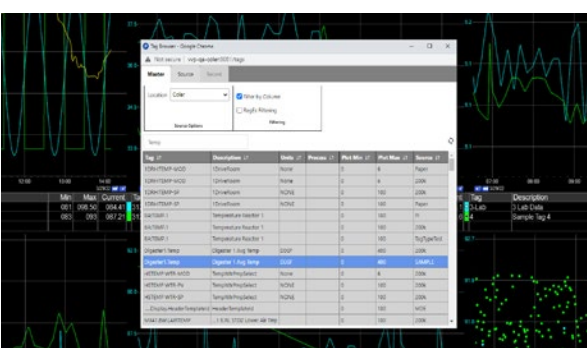
Tag Builder

- Easily configure tags throughout PARCview to use switches and aggregates or apply expressions without leaving the trend interface. This makes it easy to see all available switches to apply to a tag.
- » Enable through tag grid right click menu > Tag builder



XY Chart

- This display was re-built using SciChart technology.
- New features include Smart Mouse, configurable colors, color gradients, the ability to embed an image behind the chart (useful for pump curves and other reference images), and more.
- New setting available in XY configuration.



PARCmobile Desktop Enhancements

Many additional interactions have been added to the PARCmobile trend display including:

- Sync to match times for all trends
- Zoom in on a trend
- Tag browser to add tags to a trend
- Smartmouse & Pinning
- Data Export
- Cloning