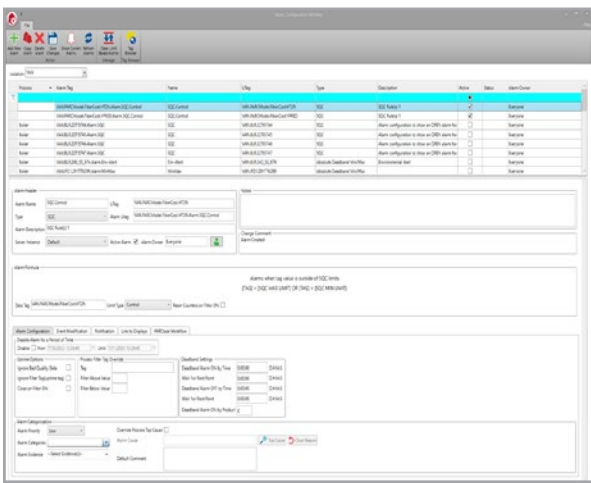


SOFTWARE RELEASE

# What's New In PARCview 5.6?

## New Alarm Configuration Screen

- Includes default evidence for an alarm, split logic, new email messaging configuration for alerts, multi-edit of alarms, default alarm comment, copy alarm, and much more.



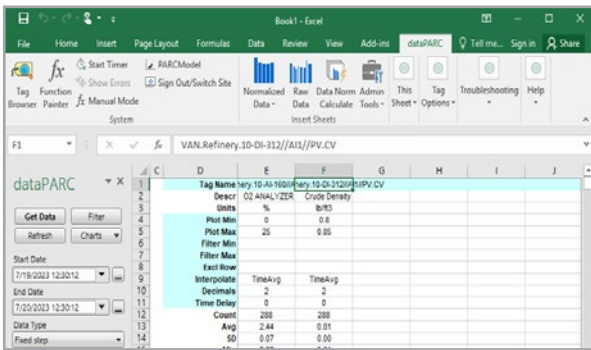
## Expanded Acknowledgement States for Alarms

- A new "Acknowledged" state was added to alarms for events that have been partially addressed. Criteria for acknowledging and then closing an alarm can be customized. Acknowledged events will show as yellow and Closed events will show as green.



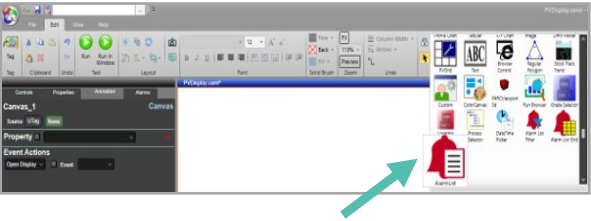
## Excel Add-In Support for 64-bit Office

- The dataPARC Excel Add-in now supports 32-bit or 64 bit Office installations



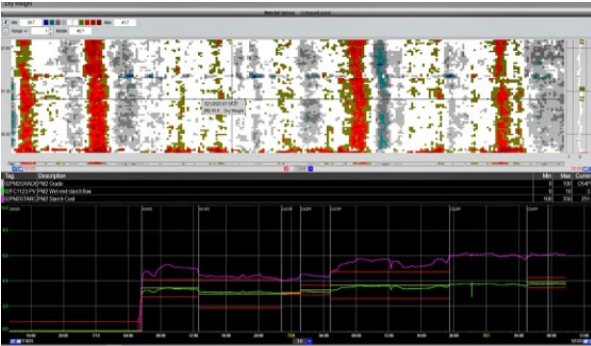
## Alarm List added to PARCgraphics

- AlarmList, Alarm List Filter, and Alarm List Grid controls added under PARCview Custom Controls.



## Waterfall Added to Trends

- Previously a separate display type, Waterfall is now integrated with Trend display.
- Smartmouse capability is also added.



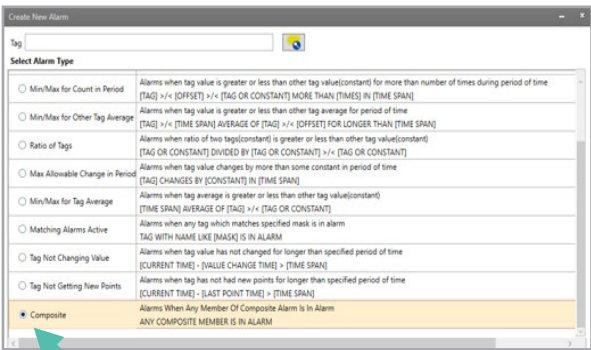
## New Alarm List Format

- Complete Re-design of Alarm List display with customizable format and expanded filtering capabilities



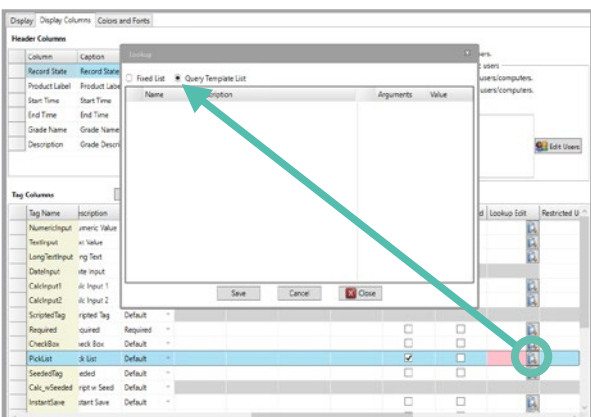
## New Composite Alarm Type

- Allows building a tiered alarm based on several existing alarms.
- Members of the composite are assigned a priority affecting how simultaneous events are handled.



## MDE Lookup List SQL Query

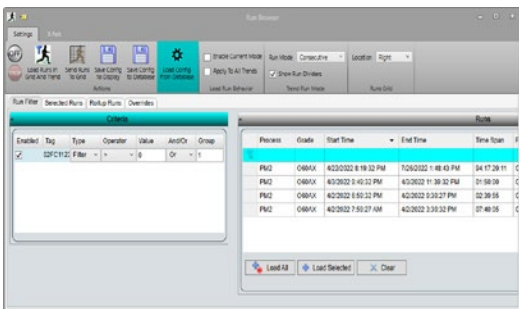
- Allows creating dropdowns in MDE from a query rather than hardcoding each one.





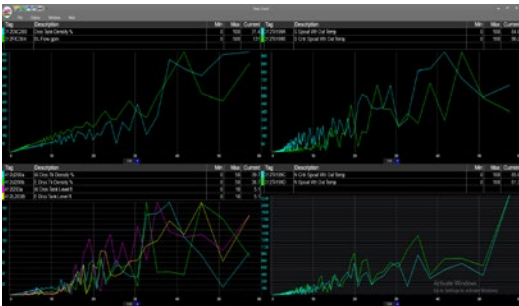
## SOFTWARE RELEASE

# What's New In PARCview 7.1?



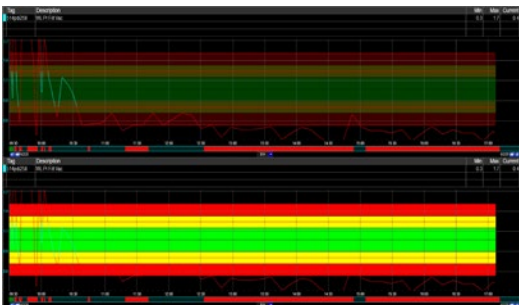
## Advanced Filtering Capabilities in Run Browser

- Criteria Section added to allow filtering based on multiple tags
  - Save filters for future use
  - Easily find key runs with advanced order and sorting
- » Click on Criteria header to show panel, drag tags into panel to filter or divide runs



## FFT Improvements

- Improved troubleshooting and root-cause analysis
- Multi-trend friendly with support for zoom and sync
- Settings remain in the same PARCview session
- Additional Support for minute ranges



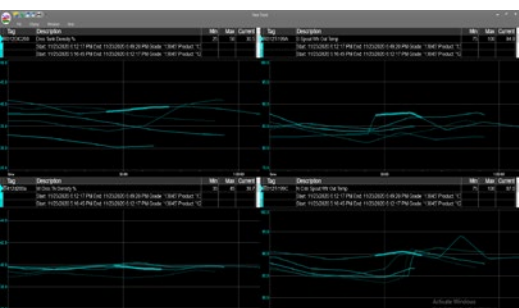
## Control Chart Zone Coloring

- Apply color shading for SPC zones 1, 2 and 3
- » To show, right click on tag in tag grid, select limits, select Enable Limit Zones



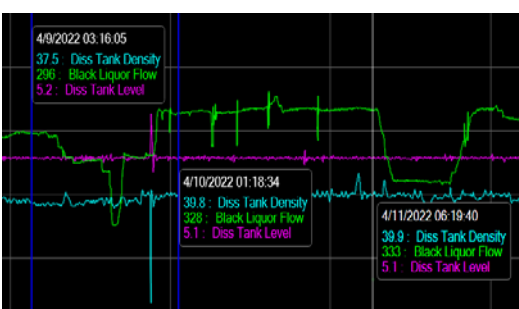
## Highlight the Active Tag From Tag Info Grid

- Easier identification of the active tag from tag Info Grid
  - The trend of this tag is emphasized in the plot
- » Select tag in tag grid to highlight, select again to unhighlight



## Highlight the Selected Batch

- Easier identification of the selected batch
  - The trend from this batch is emphasized and get the brightest color of the gradient
- » Select tag in tag grid to highlight, select again to unhighlight



## Smartmouse Pinning

- Easily annotate your trends by pinning smartmouse to a trend
  - Pins persist to cloned trends
- » 'Shift' & Click to pin the smart mouse
- » Move pin by holding 'Ctrl', click & drag blue line to new location

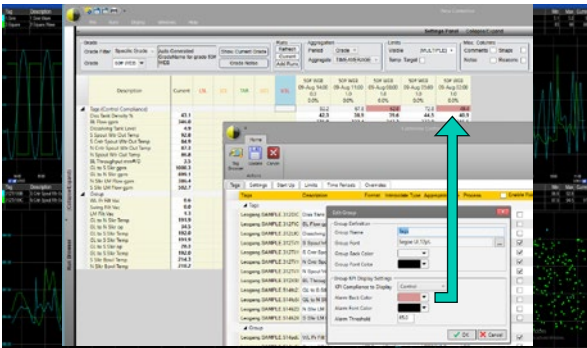


## Manufacturing Applications

- Trigger PARCview Workflows based on alarm events
- Displays/Reports can be distributed based on schedule or event triggers
- Delivers the right information to the right people at the right time

## SOFTWARE RELEASE

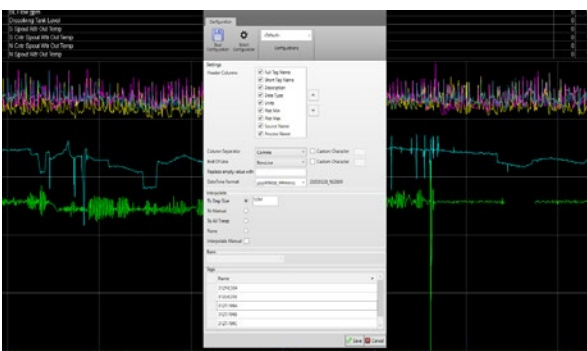
# What's New In PARCview 7.2?



## Centerline KPI

- Added functionality in Centerline to easily display group KPIs based on SQC limit compliance.
- Centerline can show compliance for tag groups and individual tags. This makes it even easier to see at a glance which areas are out of compliance and begin troubleshooting by identifying out of compliance tags.

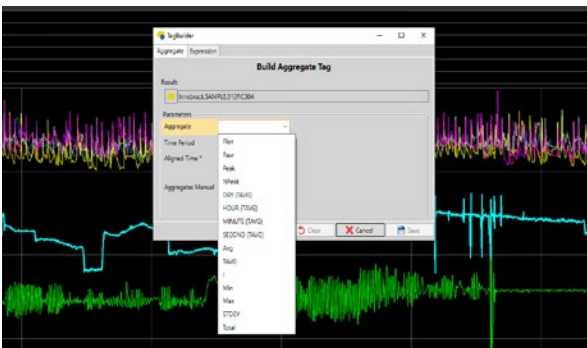
» Configure in the Edit Group Window



## Trend Export to Text File Enhancements

- Additional options have been added to export data in customizable formats, with specific interpolation settings.
- Data export configurations can be saved to facilitate repeat exports of the same format, perhaps to be sent to a third party interface.

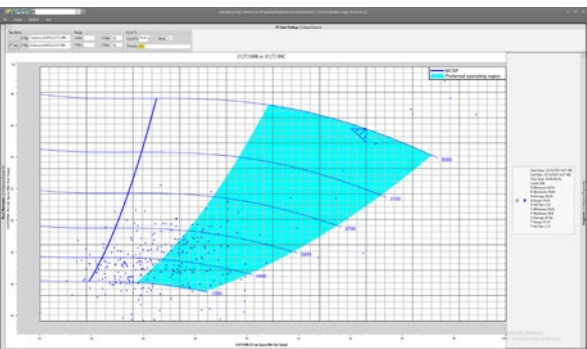
» Enable through trend right click menu > Export > Export To File



## Tag Builder

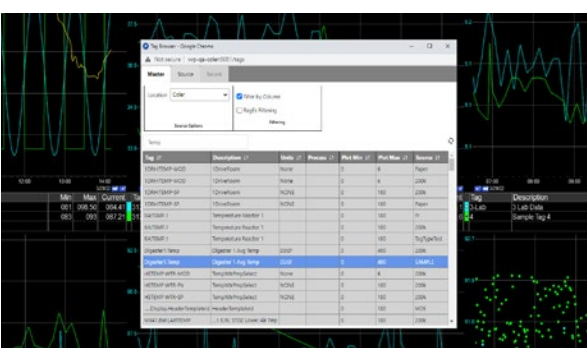
- Easily configure tags throughout PARCview to use switches and aggregates or apply expressions without leaving the trend interface. This makes it easy to see all available switches to apply to a tag.

» Enable through tag grid right click menu > Tag builder



## XY Chart

- This display was re-built using SciChart technology.
- New features include Smart Mouse, configurable colors, color gradients, the ability to embed an image behind the chart (useful for pump curves and other reference images), and more.
- New setting available in XY configuration.



## PARCmobile Desktop Enhancements

Many additional interactions have been added to the PARCmobile trend display including:

- Sync to match times for all trends
- Zoom in on a trend
- Tag browser to add tags to a trend
- Smartmouse & Pinning
- Data Export
- Cloning

## SOFTWARE RELEASE

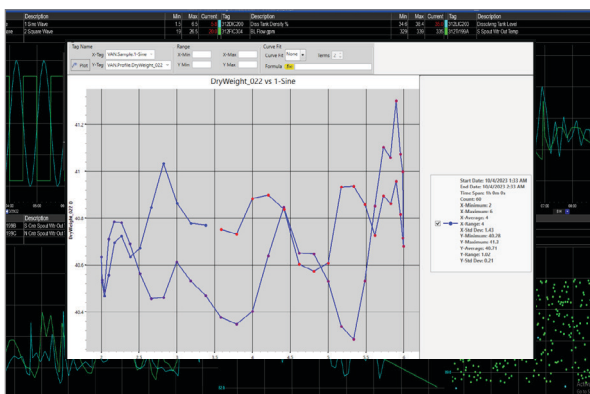
# What's New In PARCview 7.3?

## New dataPARC Features

Record State	Product Label	Start Time
		02/01/23 16:35
		02/01/23 16:40
		02/01/23 16:45
		02/01/23 16:50
		02/01/23 16:55
		02/01/23 17:00
		02/01/23 17:05

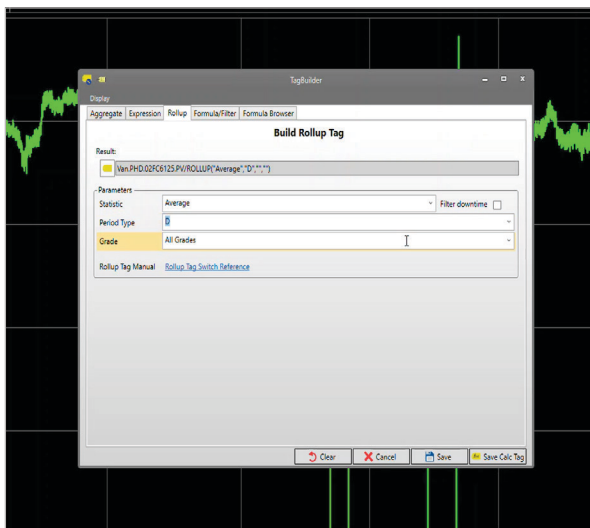
### Offline Manual Data Entry

- Long-awaited feature now available.
- Go offline, cache your data, and load it when back online.
- MDE displays operate independently without connection to the dataPARC server.
- Conflicts during offline usage prompt a resolution screen for selecting data to keep.
- » Enable offline mode in MDE Configuration > Display Tab. Select a temporary folder to save offline data.



### Improvements to XY Chart

- Color-coded points in chronological order for visual progression.
- Connect points with a line to visualize sequential relationships.
- Introducing logarithmic scale options for versatile chart scaling.
- Reverse order axis options for greater flexibility in data representation.
- » Settings accessible in XY Configuration



### Tag Builder Enhancements

- Rollup Tab:
  - Modifies the base tag with values from the rollup server if available.
- Formula Tab:
  - Enables users to choose formulas or filters and enter arguments without opening the script editor.
- Formula Browser Tab:
  - Allows users to search formulas based on description, type, or times used in other calculations.
  - This is also added to the Script Editor
- » Enable through tab grid right click menu > Tag builder

Description	Current	LCL	TAR	UCL	22-Feb 00:00 9.1 0.0%	21-Feb 00:00 24.0 0.0%	20-Feb 00:00 24.0 0.0%
Group 1							
WL Pr Filtr Vac	1.3	0.3		0.5	1.5	1.1	1.1
LM Filtr Vac	3.4				2.3	2.1	2.4
GL to N Silkr op	13.8				19.0	11.3	5.6
GL to S Silkr op	12.4			13.7	15.7	7.4	1.7
S Silkr Bowl Temp	212.7				210.8	193.2	209.0
N Silkr Bowl Temp	218.5				218.4	217.4	217.3
S CC Rules Test	1.9			4.6	0.6	-0.5	-0.5
61_0 Profile Tag	-1.1				-1.5	-1.5	-1.5
61_00 Profile Tag	-1.1				-1.5	-1.5	-1.5
Min of the Hour	2.0	20.0		40.0	28.8	28.8	29.5
Group 2							
Diss Tank Density %	41.5	36.0	40.0	44.0	39.5	41.1	41.7
BL Flow gpm	111.0				119.7	335.0	340.8
Dissolving Tank Level	4.1	4.5		6.0	4.9	5.0	5.2
S Spout Wtr Out Temp	88.7	80.0		85.0	87.7	86.5	87.1
S Cntr Spout Wtr Out Temp	83.9	81.0	83.5	86.0	83.7	83.9	84.3
N Cntr Spout Wtr Out Temp	85.8				86.7	87.3	88.0
N Spout Wtr Out Temp	85.8	81.0	87.0	93.0	86.4	88.4	88.7
BL Throughput mm#/D	3.1	3.3	3.5	3.7	3.3	3.5	3.7

### Centerline Upgrades

- Color Gradient for Values:
  - Added a visually intuitive color gradient, like the waterfall display
  - » Select "Run Aggregate" from the Misc Columns Drop down
- Run Aggregates:
  - Introducing the ability to calculate a statistic for all runs present, visually represented as a single column.
  - » Right click on a cell > BG Color: Run Value

### New LDM Limits Block

- New Block in Logic Design Manager for Limits
- Gets any limit value for us in logic calc or alarm

### Asset Manager Script Editor

- Launch Script Editor directly from Asset Manager
- Create calculation for specific asset property
- Create calculation for asset type property
- New Tab in Script Editor for Asset Properties