



U Stage

Synchronization Assistant background

PC Edition use manual

Version V 1.0.0.5

Shenzhen Youboxun Technology Co., Ltd
On September 6, 2023

statement

The ownership and interpretation right of this document belongs to Shenzhen Youboxun Technology Co., Ltd. Without the written permission of Shenzhen Youboxun Technology Co., Ltd., it shall not be copied or disclosed or sold to a third party, otherwise it will be investigated for legal responsibility according to law.

This document is U Stage, the functional operation description of the background PC version. The specific operation is subject to the function of the customer's handheld device. Please read the instructions in detail before use and standardize the operation.

edition	date	AMD	expurgator	explain
V1.0.0.1	2023/7/13		Huang zhuoshuo	editio princeps
V1.0.0.2	2023/8/29	M	Huang zhuoshuo	When exe is running, there is no need to right-click- -run as administrator permission and double-click to open the software.
V1.0.0.3	2023/8/29	A	Huang zhuoshuo	Add the feature of the skip boot WIFI wizard to add new pages configurable.
V1.0.0.4	2023/8/29	A、D	Huang zhuoshuo	Optimize the interface- -delete the QR code switch between Api and boot Wifi configuration, and only the QR code of Api service is displayed in the lower left corner; the QR code of boot Wifi configuration is displayed on the configuration page.
V1.0.0.5	2023/9/6	A、M	Huang zhuoshuo	1. Add the firewall port through the rules, no need to manually close the firewall. 2. Add the address refresh function. When the network is changed (switch to Wifi), there is no need to restart the software. Click the "Refresh" button, and the QR code will automatically refresh to the

				<p>new address.</p> <p>3. Under the file configuration, the device side address can be customized, and WeiApi will also return the modified address.</p>
--	--	--	--	--

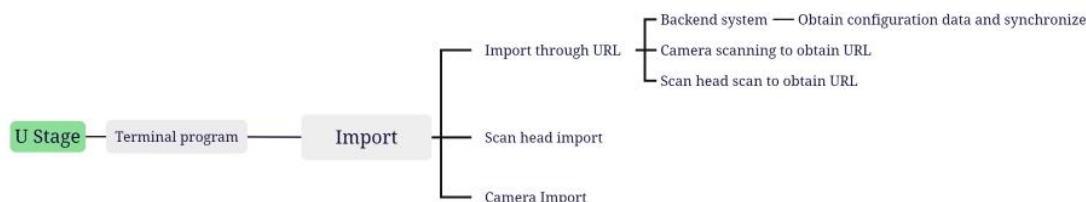
(A-Add, M-Modified, D-Delete)

catalogue

1.U Stage Background PC version function introduction	2
2.Equipment operation guide	2
3.Background PC version operation guide	6
4.Device and computer set the synchronization range	22
5.U Stage Description	23

1. U Stage Background PC version function introduction

Ustage Provide enterprise IT administrators and agents to do fast equipment configuration synchronization, according to the needs of the first equipment configuration, other devices can be quickly configured in a simple way. Let the massive equipment simply and quickly reach the working state, convenient enterprise control, and can reduce the error of human configuration.



Import

After completing the prototype configuration, it can be imported according to the preexport mode

1) Import Via URL

To set this configuration requires the UStage background system, which configure the computer storage path and equipment storage path in the background system, import the configuration files and APK files from the QR code generated by the link.

2) Scan head scan code and camera scan code import

Click "Scan head scan code" or "Scan camera scan code import" after the scan head or camera lights up, scan the generated synchronous configuration QR code, wait for the device to perform the configuration, and the deployment work can be completed. No scanning head device can be imported by scanning the camera.

2. Equipment operation guide

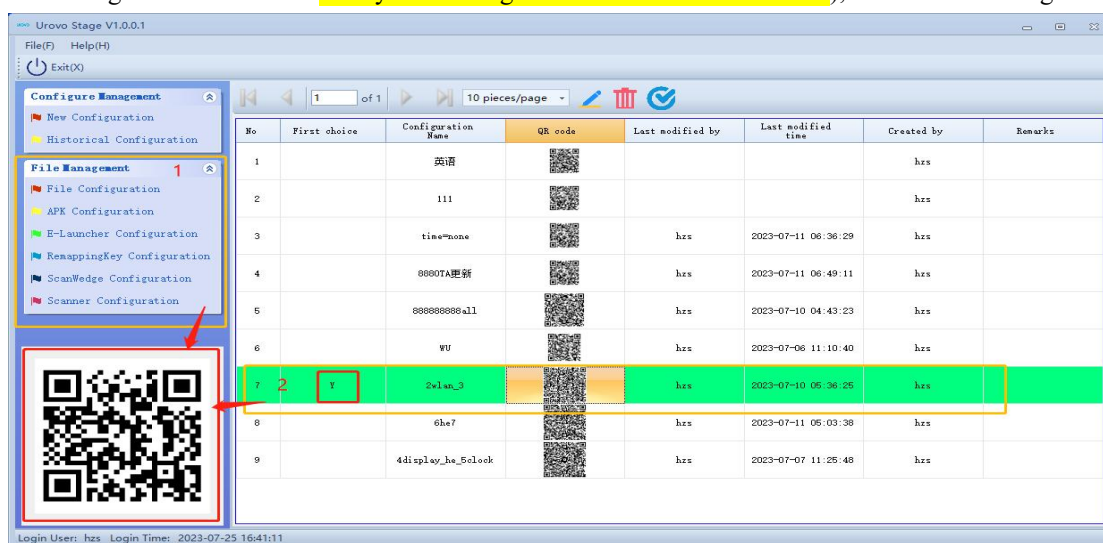
Step 1: **Install the U Stage application and the USDKProfileService application** (Sync the system Setup service, this application requires signature)

Step 2: Export the configuration according to the requirements

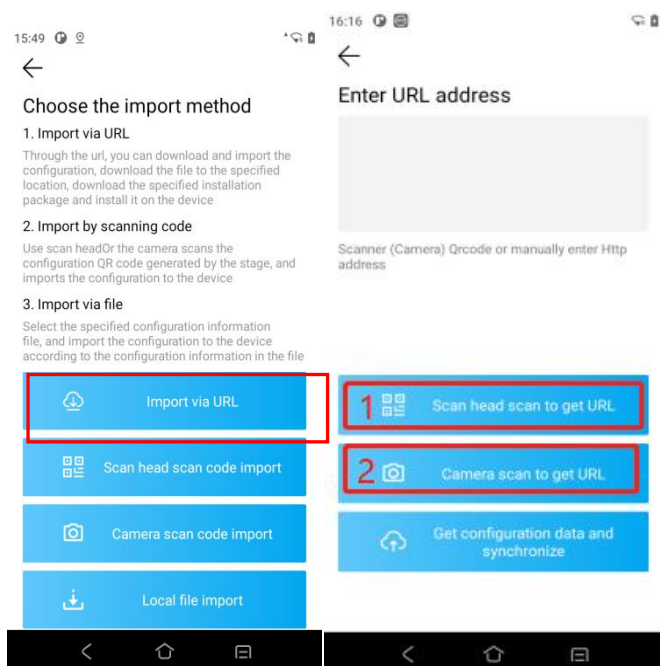
Step 3: Import the configuration to other devices according to the exported configuration mode

Scenario 1: Import Via URL **【！！ Only the lower left QR code is allowed】**

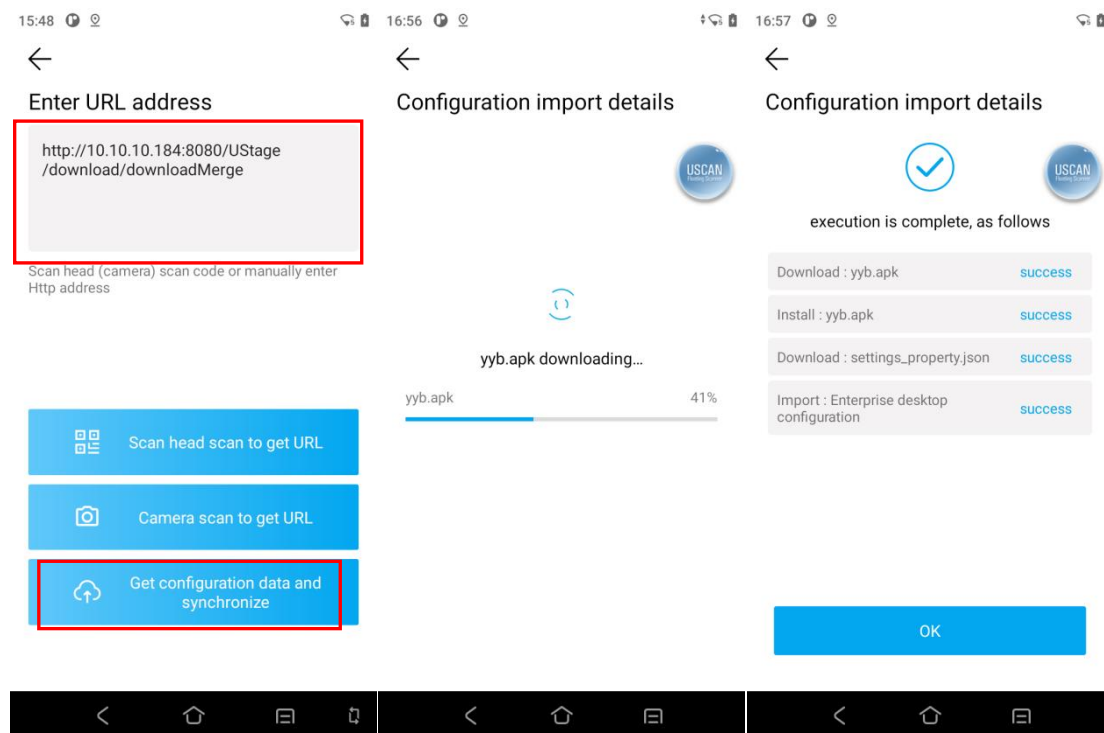
The QR code for U Stage backend system configuration (this QR code includes the configuration of the file management module and **the system configuration of the selected Y item**), as shown in the figure:



In order to synchronize as soon as possible, the terminal and the computer must be in the same LAN; after installing U Stage and service, open U Stage, select "Import Via URL", and then select (1) "Scan head scan for URL" or (2) "camera scan for URL" to import:



After the device is scanned, the interface address appears in the address bar. Click "Get configuration data and synchronize" to start synchronizing the configuration items and wait for the configuration to complete (if there is an APK, it will be automatically downloaded and installed)



Error:

15:53



Configuration import details



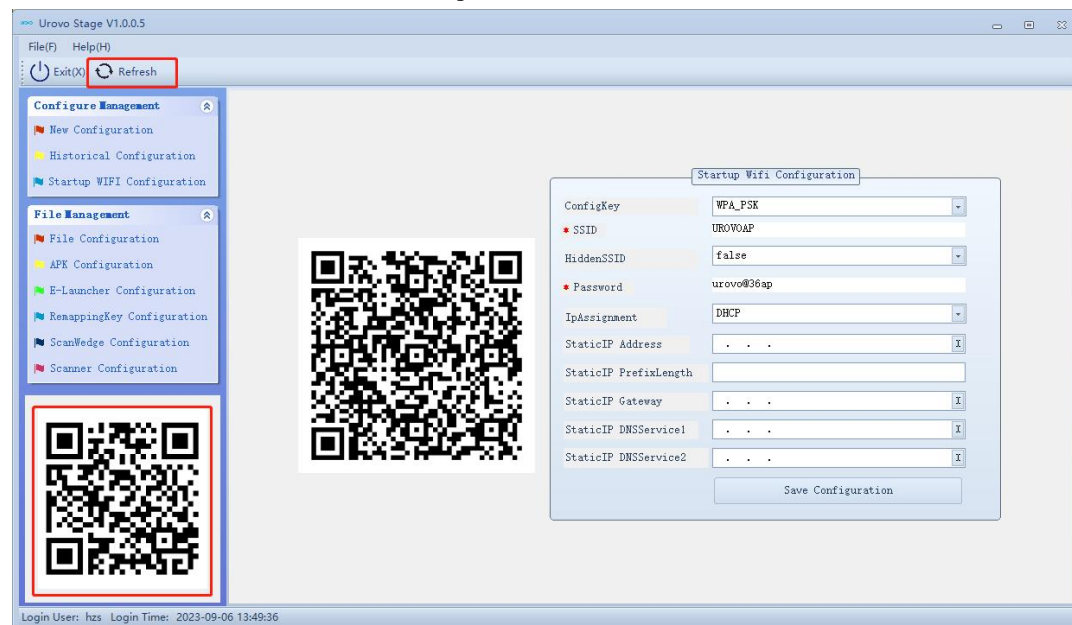
configuration is imported, and the
import details are as follows

Configuration data parsing failed

OK

Retry on
failure

When opening the Ustage PC version, when switching to WiFi, click the "Refresh" button, and the QR code in the lower left corner will be updated to the new address.

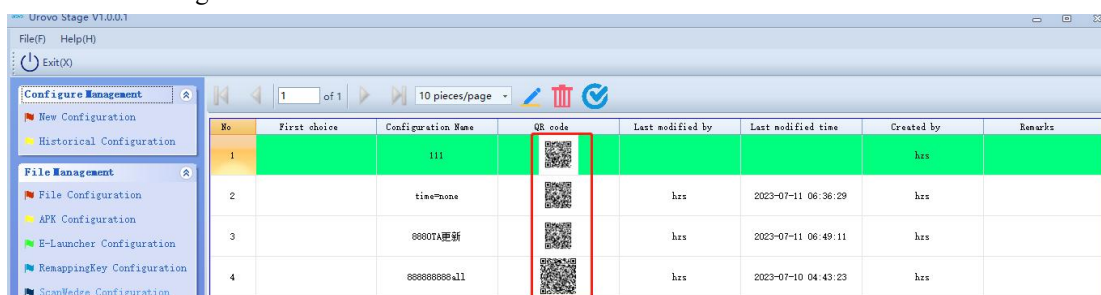


Example: Move the mouse to the lower left corner to display the website of the left picture. After switching the network, click the "update" button to move the mouse to the lower left corner again and become the website of the right picture.

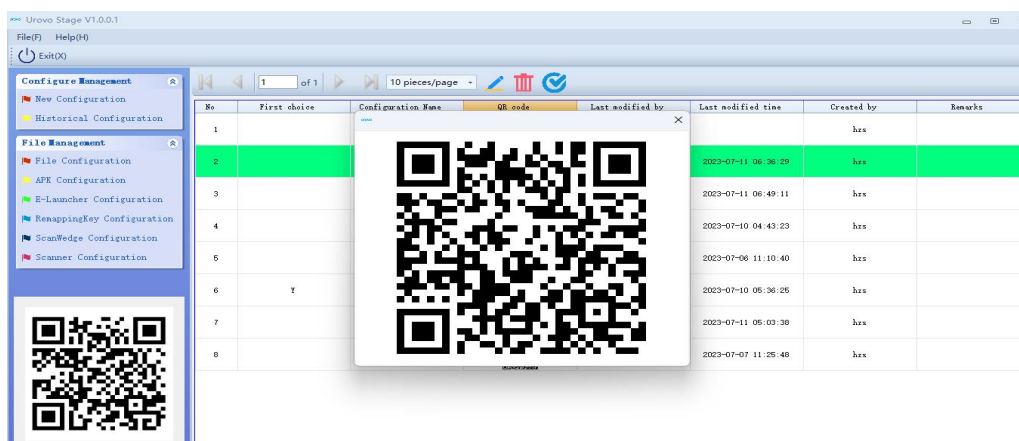


Scheme 2: Local scan the code to import 【scan the QR code of the system configuration items】

System settings item QR code for U Stage backend system configuration (the QR code in the middle), as shown in the figure:



Click on the amplification effect (convenient to scan the code)



The device can synchronize the configuration of the QR code, to achieve the purpose of **offline synchronous configuration**.

Open U Stage, select (1) "Scanner Qrcode Import" or (2) "Camera Qrcode Import", scan the code to start synchronize the configuration items and wait for the configuration to complete.



3. **Background PC version operation guide 【after the updated version, the configuration items to click to save it again】**

The background system is a background management U Stage system with Synchronous Setting Item, File Configuration, APK Configuration, E-Launcher Configuration, RemappingKey Configuration, ScanWedge Configuration, and Scanner Configuration as the basic function. The equipment can synchronize the corresponding configuration with both network and no network. Through the background system, the operation function is more fast and convenient, and the synchronization process and efficiency can be more efficient. For the deployment steps, please refer to the background deployment manual.

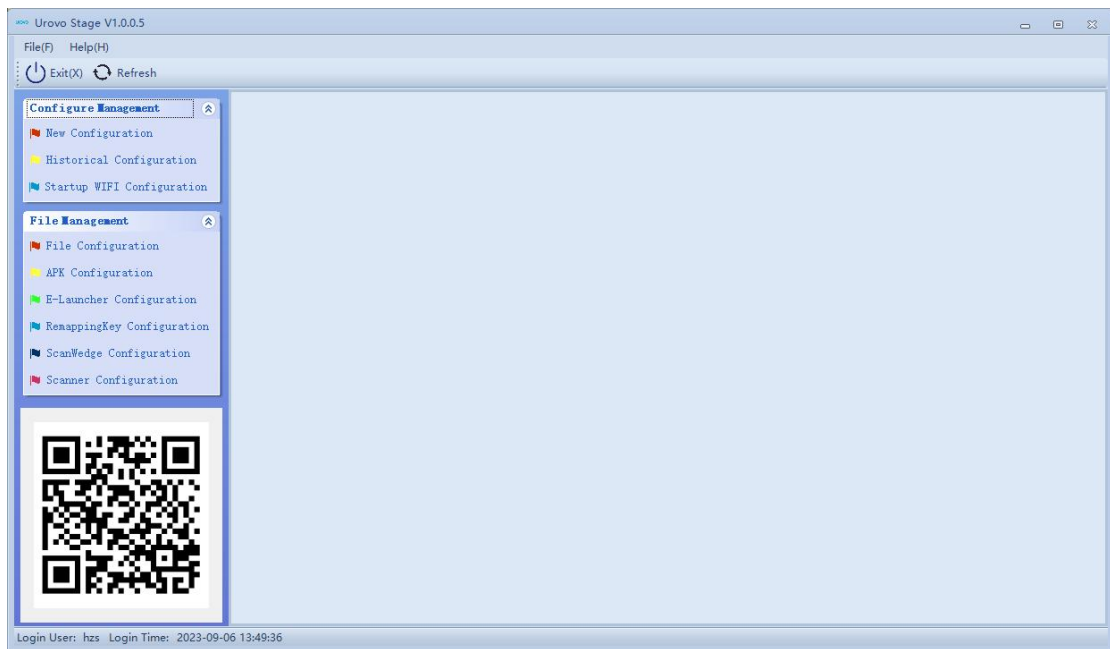
1. Double-click to run UStage. exe, enter the page, if there is no account, register first, and then log in.



2. Register your account number and password.



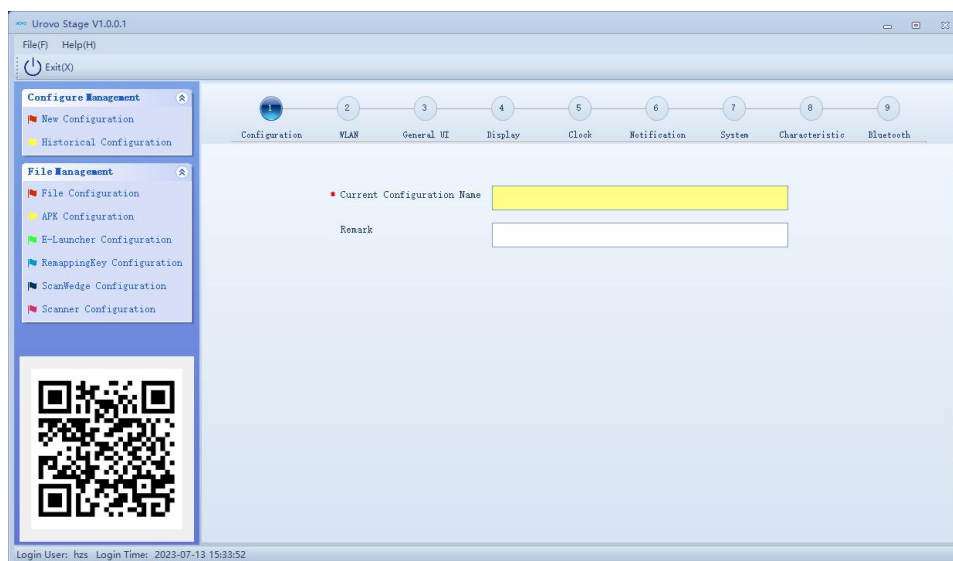
3. Synchronous configuration items include: System Settings, Startup WiFi configuration, File Configuration, APK Configuration, E-Launcher Configuration, RemappingKey Configuration, ScanWedge Configuration, and Scanner Configuration. The following respectively introduces the specific meaning of each set item.

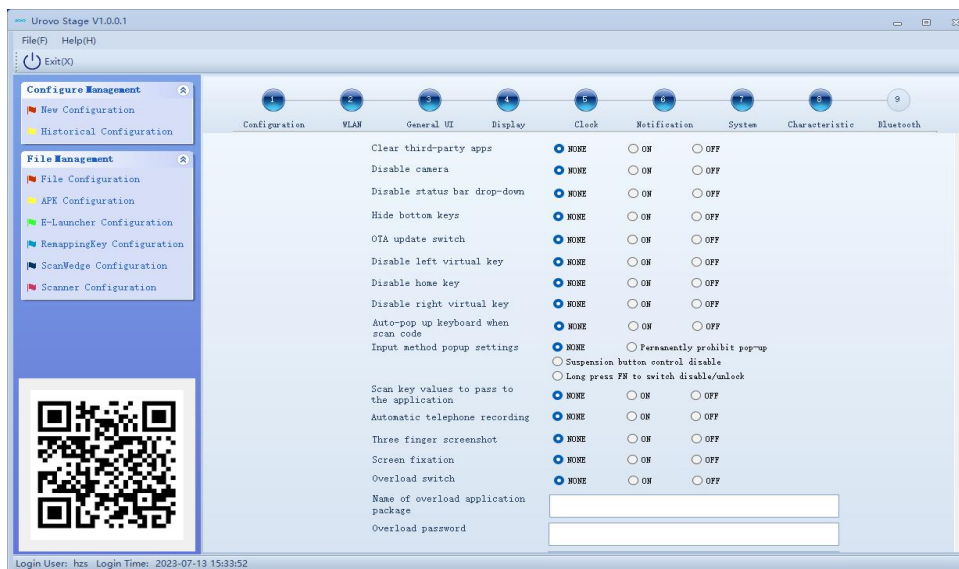
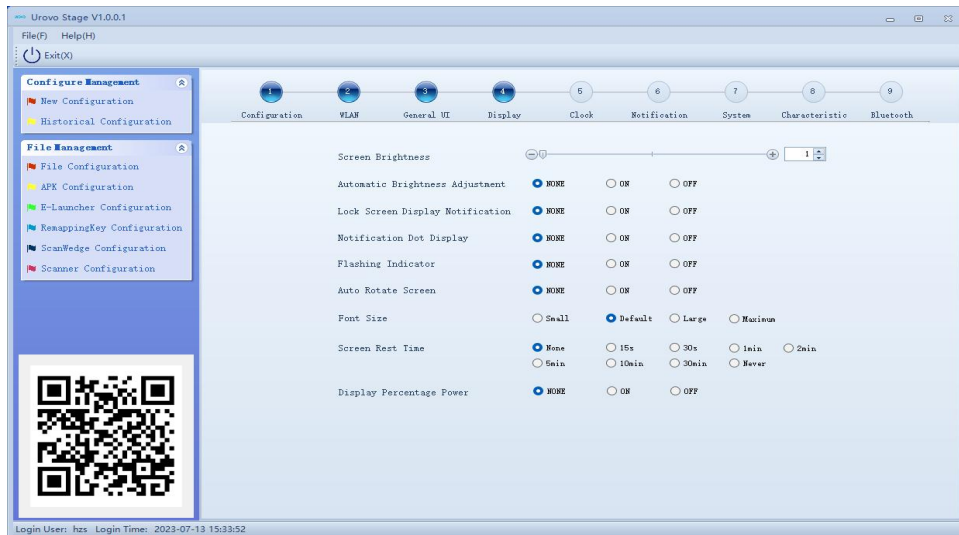


(1) System setting, the setting item includes:

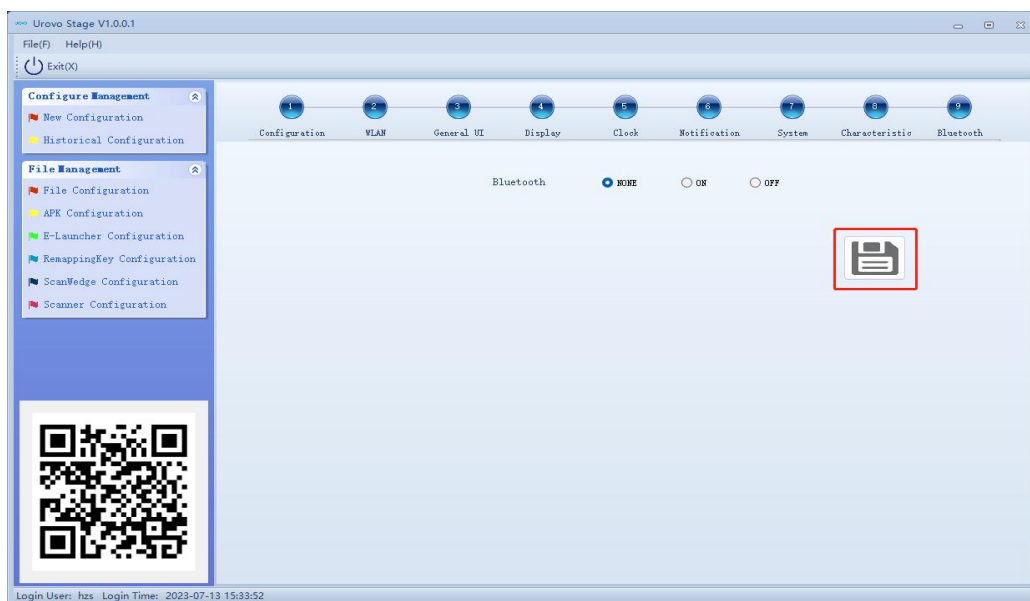
- a. Related configuration of the time part: automatic time setting, automatic time zone setting, time setting, NTP server setting, etc.
- b. Display some related configuration: brightness level, adaptive brightness , auto-rotate screen, font size, screen timeout, etc.
- c. General-related configuration: input method, language, etc.
- d. Notification related configuration: alarm volume, call volume, touch sounds, etc.
- e. Bluetooth related configuration: turn on and close Bluetooth, etc.
- f. WIFI-related configuration: WIFI switch, WIFI configuration, etc.
- g. System-related configuration: flight mode, positioning mode, NFC function switch, ADB commissioning switch, etc.
- h. Default application-related configuration: home screen application, default browser, etc.

Click "New Configuration" to start the configuration and enter the configuration name

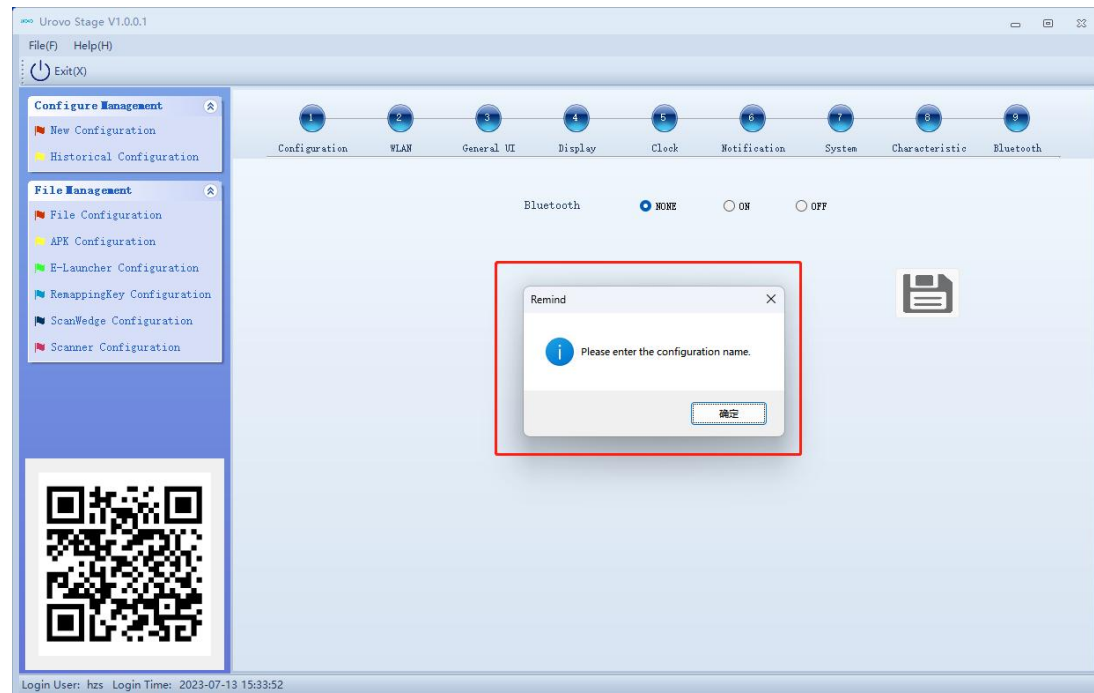




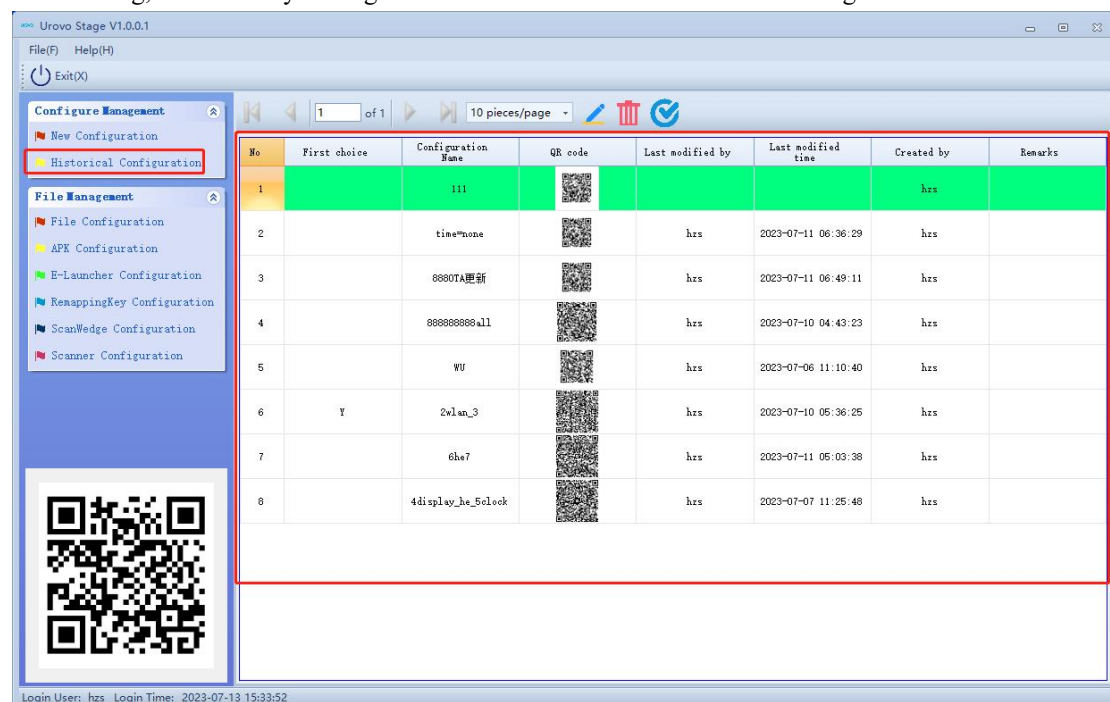
Set the configuration item and click the Save button under "Bluetooth Settings" to save



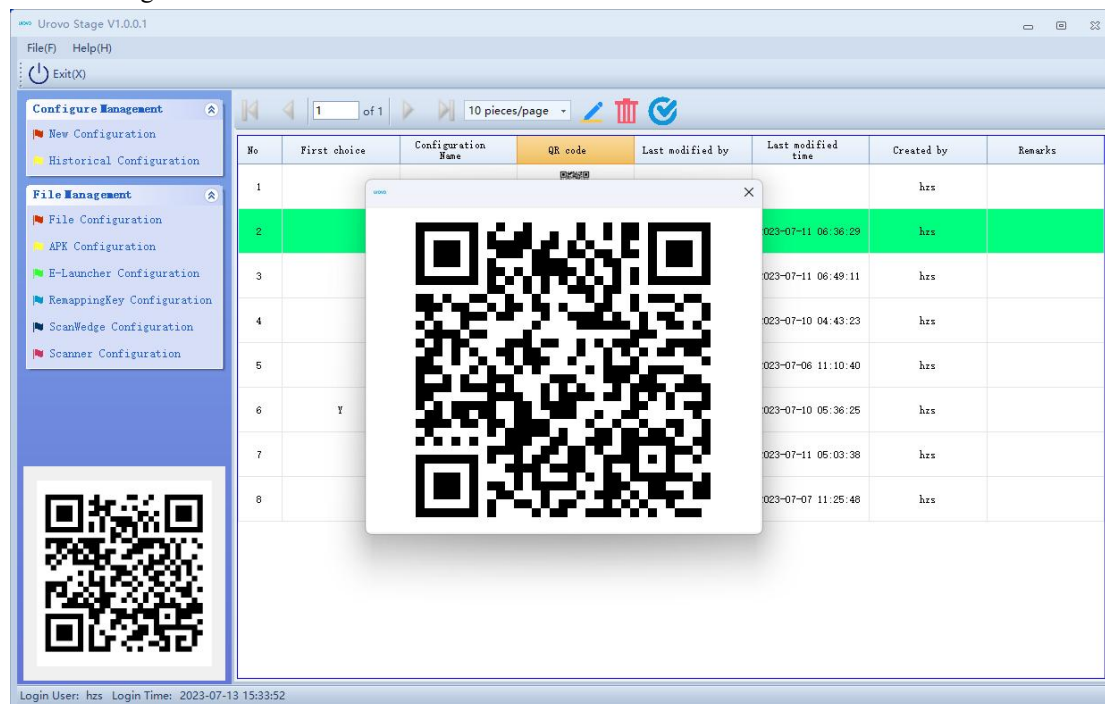
When you do not enter a configuration name, you will be prompted to enter the configuration name (the configuration name must be in English):



After saving, click History Configuration " on the left to view the saved settings



Click the QR code to zoom in, and use the device U Stage program to scan the QR code to synchronize the set configuration items



(2) Startup WiFi configuration - temporarily only support SQ53S equipment, for details, please ask the technical support personnel:

Click “Startup WIFI Configuration” (box 1), configure WiFi (box 2), and a QR code (box 3) will be generated.

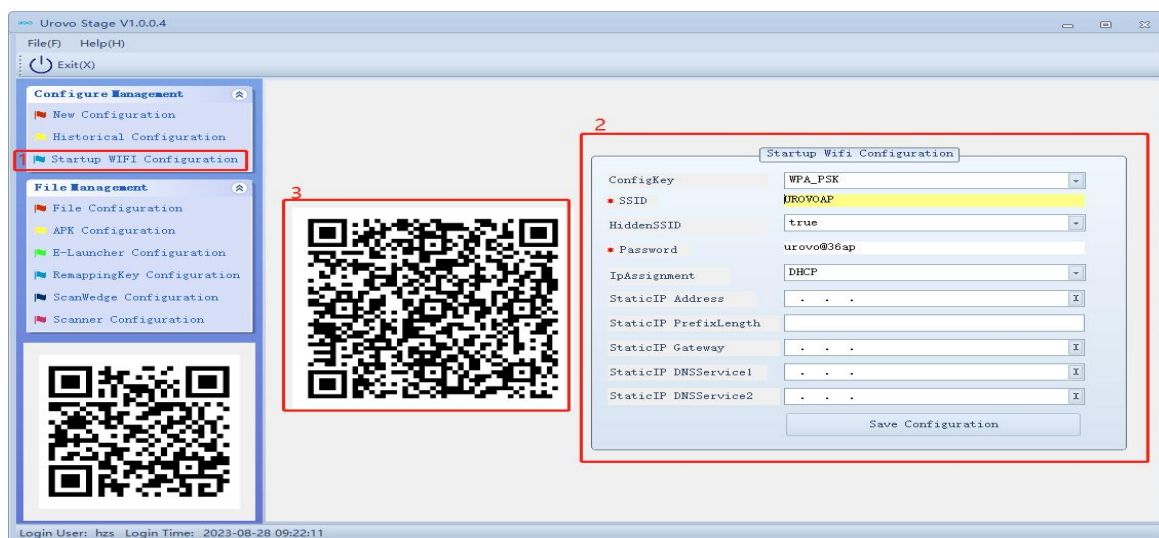
For the WiFi configuration, either manually or automatically:

1. When the IP is configured as automatic (DHCP), only need to fill in the SSID and password and save the configuration.
2. When the IP is configured manually (STATIC), box 2 is filled and the configuration saved.

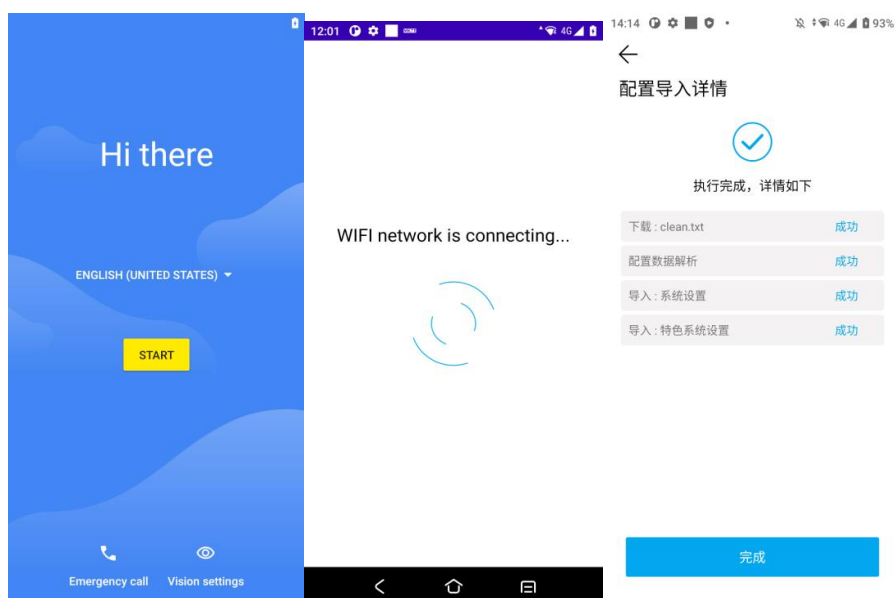
Remarks: network prefix length: 16. The corresponding subnet mask is 255.255.0.0

The network prefix length is 18. The corresponding subnet mask is 255.255.240.0

The network prefix length is 24. The corresponding subnet mask is 255.255.255.0



For the first time, the device enters the boot wizard interface and scans the code on the boot wizard interface (scan the QR code for Startup WiFi configuration). The effect is as follows: skip the boot wizard interface, connect the network, and import the configuration of the synchronization assistant.

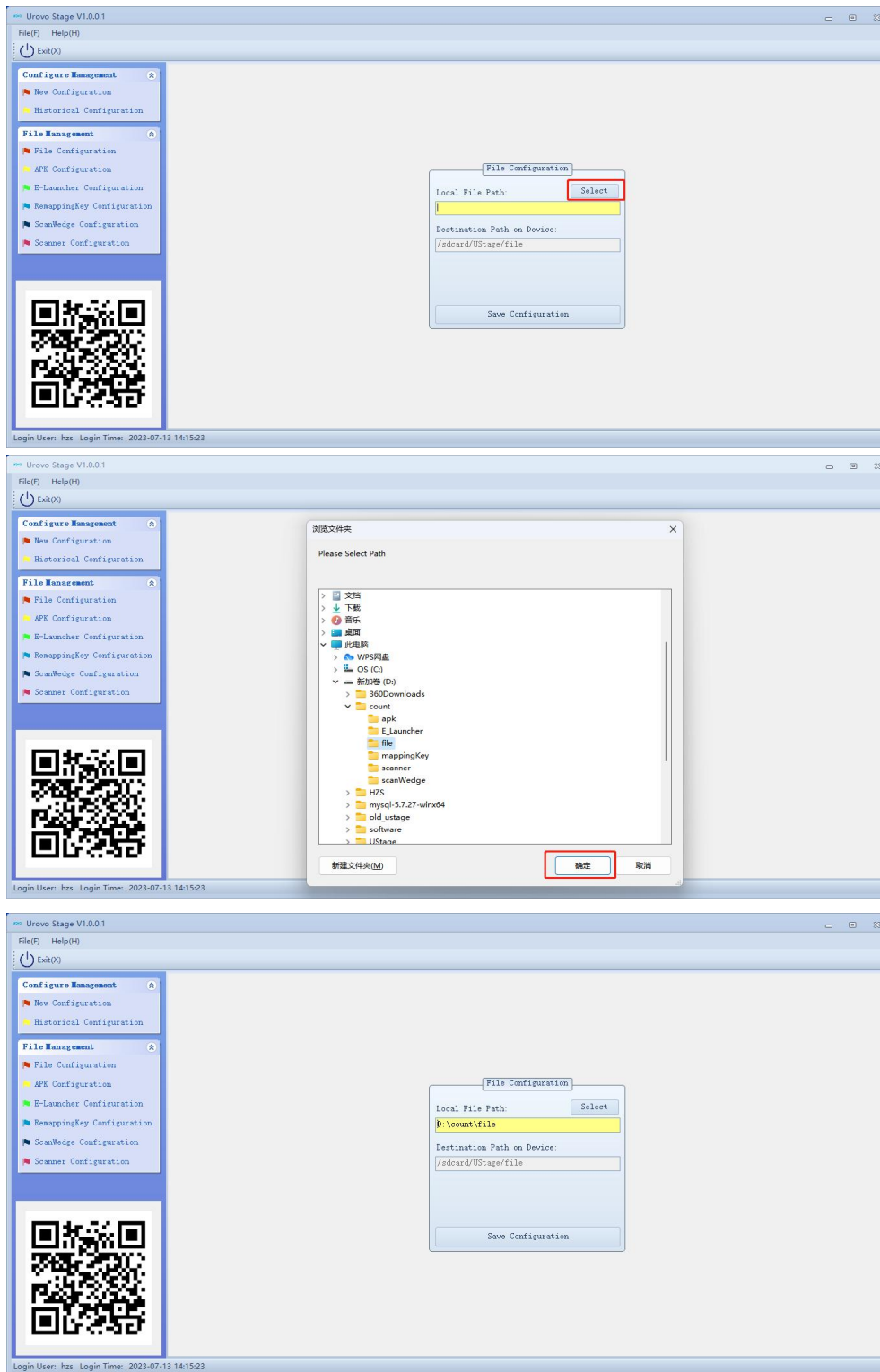


(3) File configuration : This function can import the files of each format on the computer into the directory set by the device, to realize the file transfer of the computer and the device

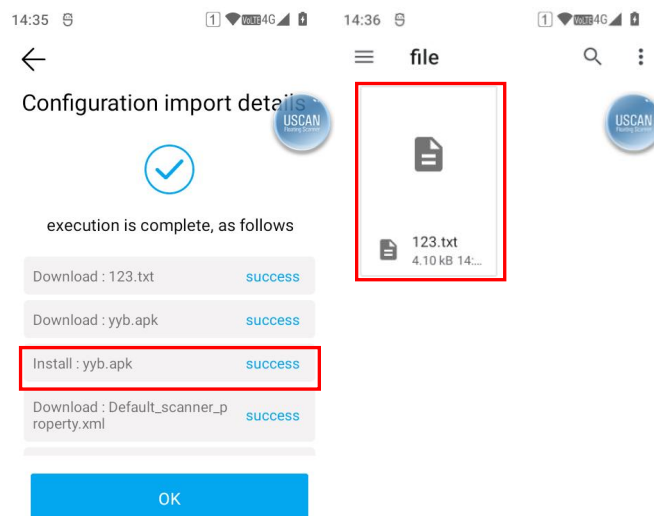
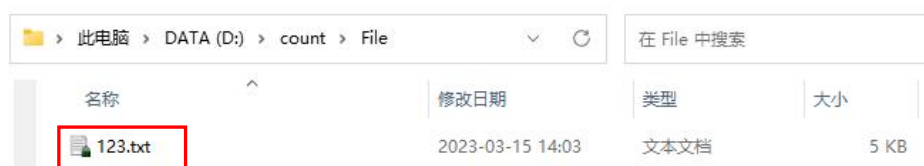
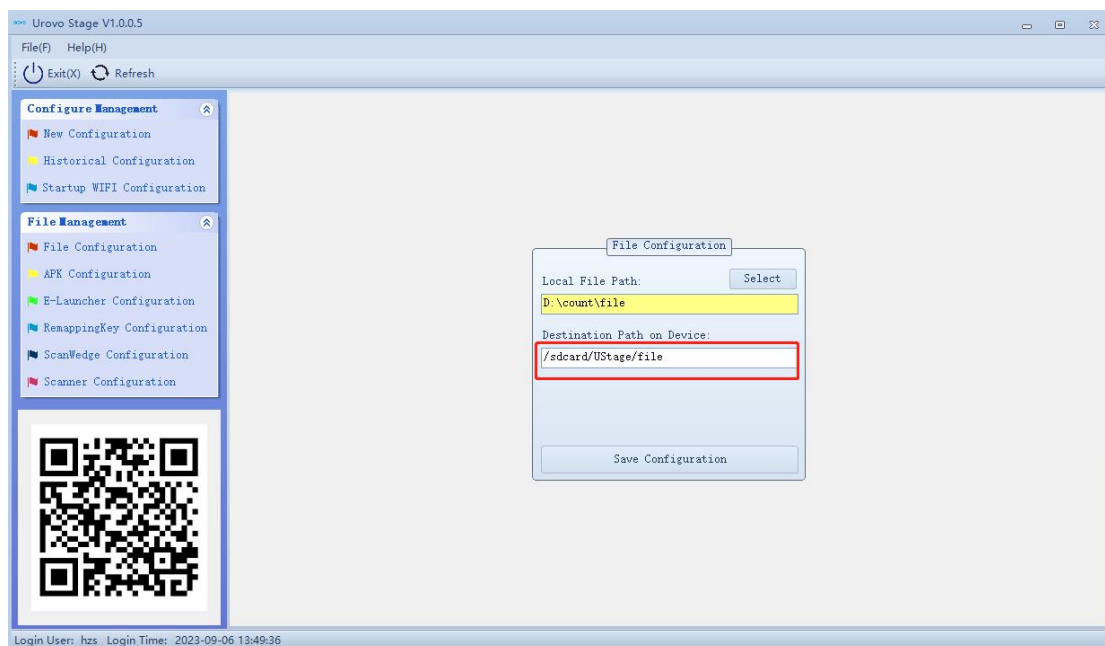
(Local File Path: Location of computer local files)

(Destination Path on Device: Final location of equipment file)

Click "Select" to select the folder, select the file and click "OK", the path of the computer file will automatically write to Local File Path.



(Destination Path on Device: the final storage location of equipment files) can also be customized, manually input path (The path must be in English), more flexible processing of the location of equipment files storage.



(4) APK Configuration: This setting item enables the device to scan the QR code and put the installation package under the installation directory set by the device, and automatically install the application. First, the installation package should be placed under the path set by the background system, respectively

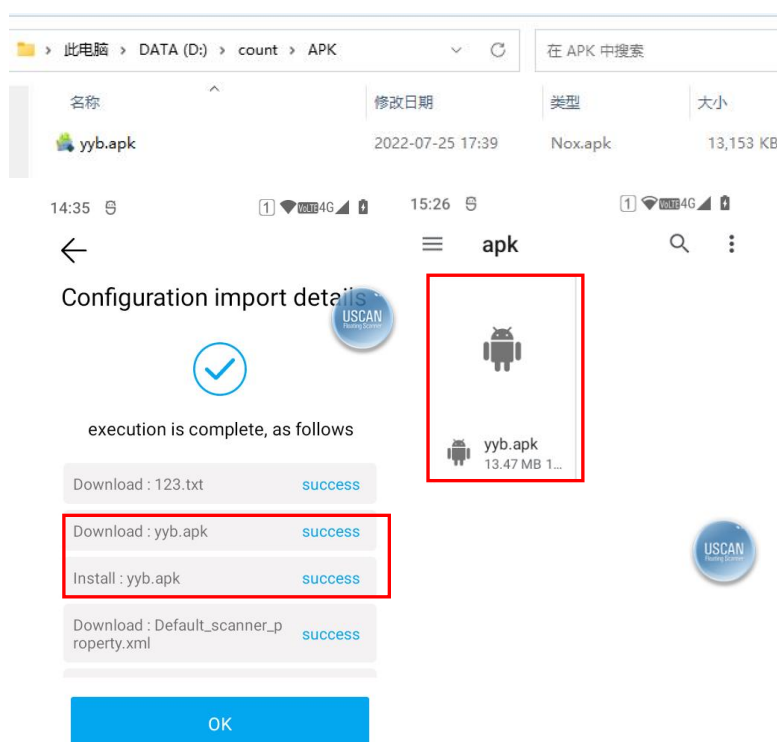
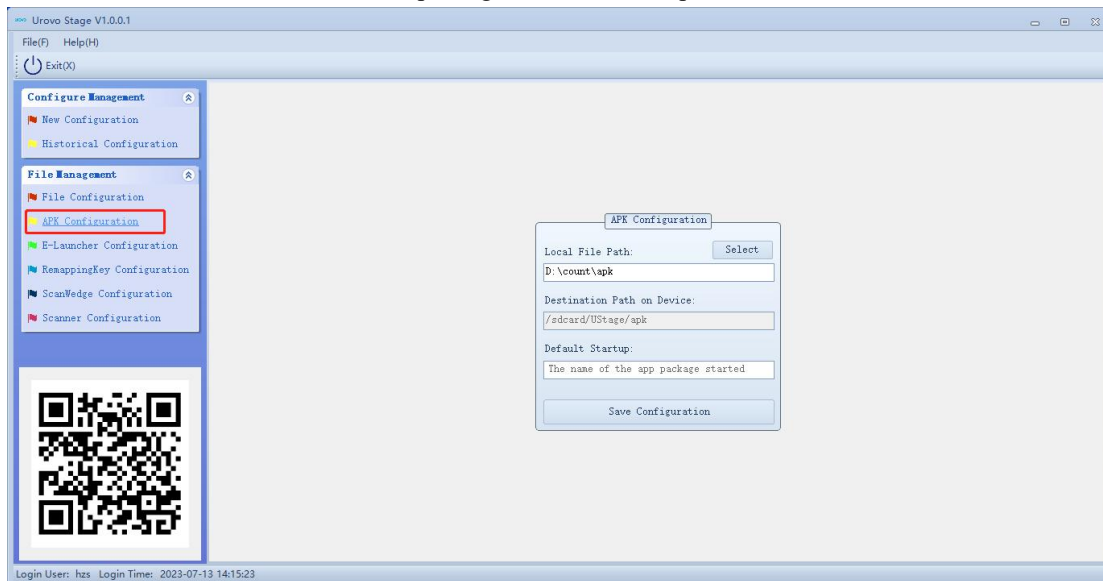
(Local File Path: computer apk package storage location)

(Destination Path on Device: Device apk package final storage location)

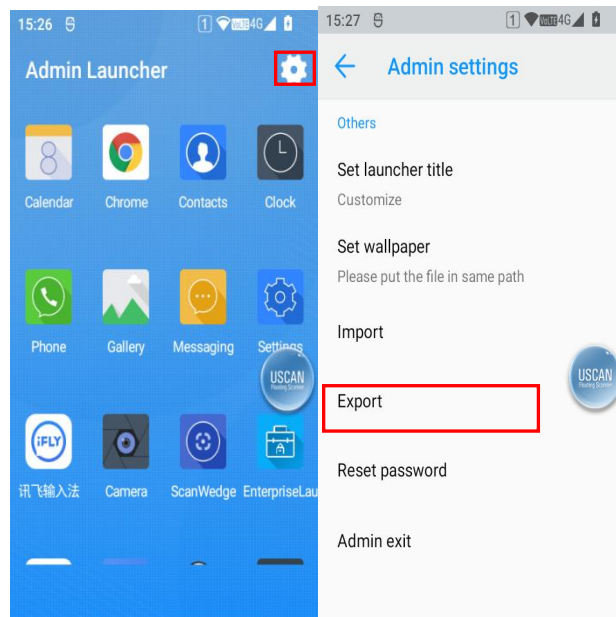
(Default startup configuration: apk package name)

Enter the path and package name and click “Save Configuration” to save the configuration.

The automatic installation installation package also has the set path below

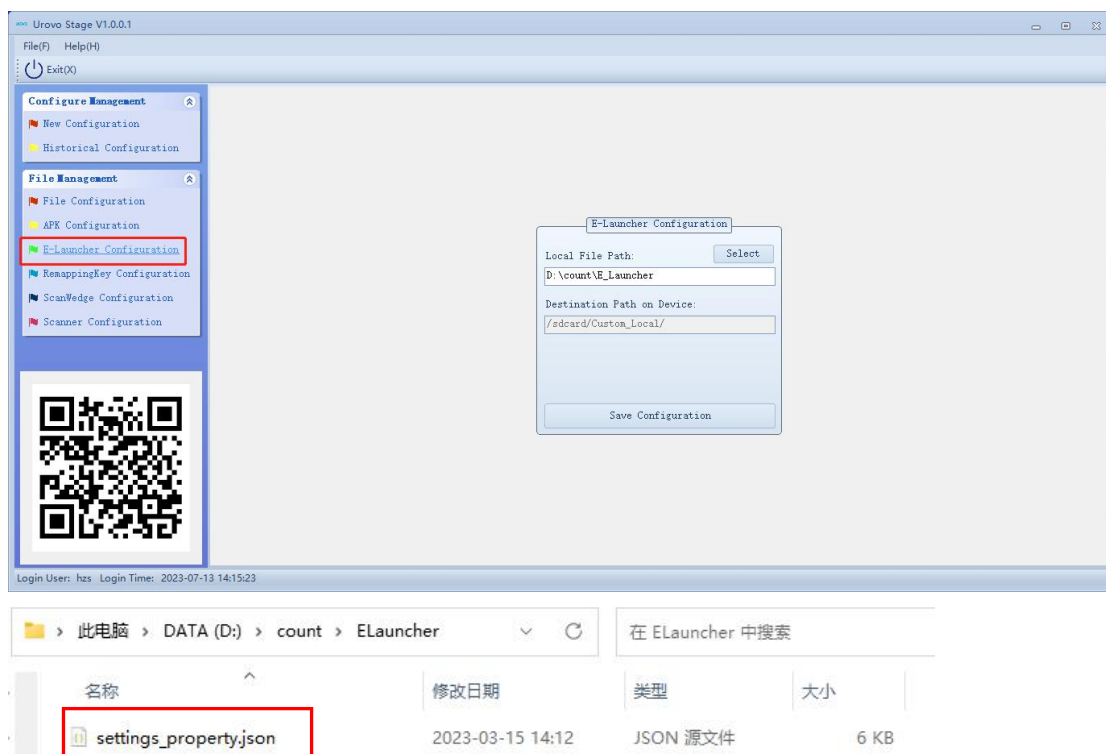


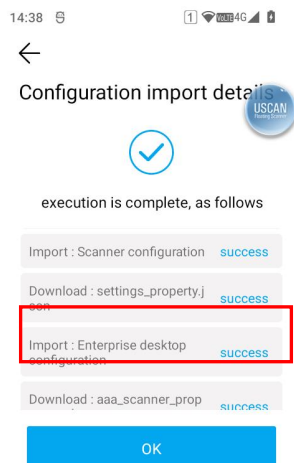
(5) E-Launcher Configuration: import the E-Launcher Configuration into the device, first export the JSON profile inside the enterprise desktop program, and pull the configuration file into the corresponding path of the computer.



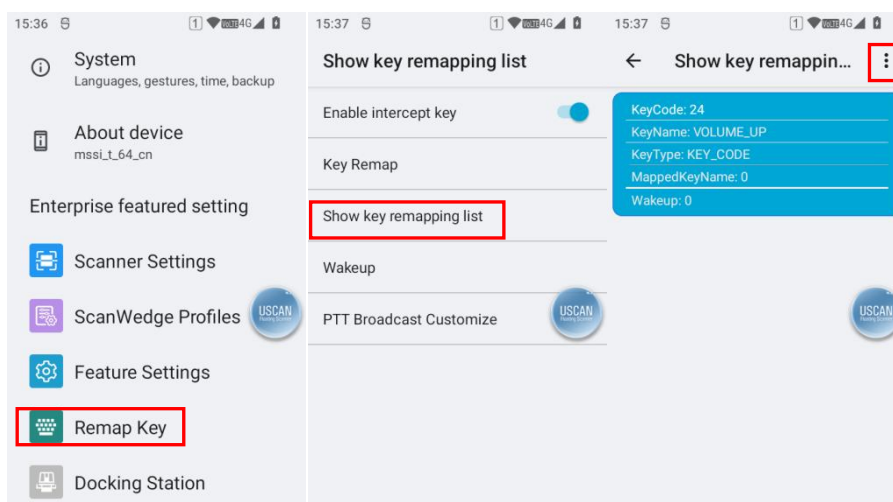
(Local File Path: E-Launcher configuration in the computer storage location)

(Destination Path on Device: where the E-Launcher profile is finally stored in the device)



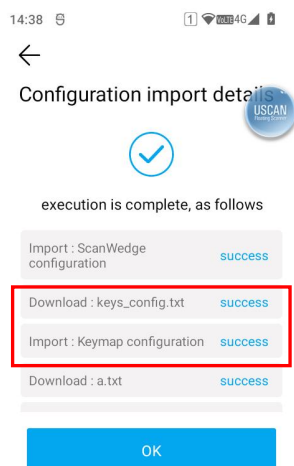
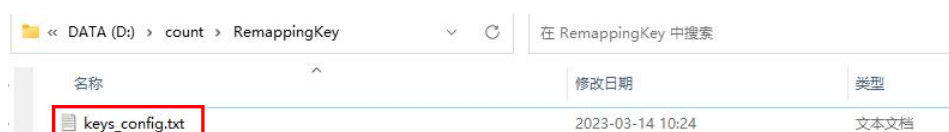
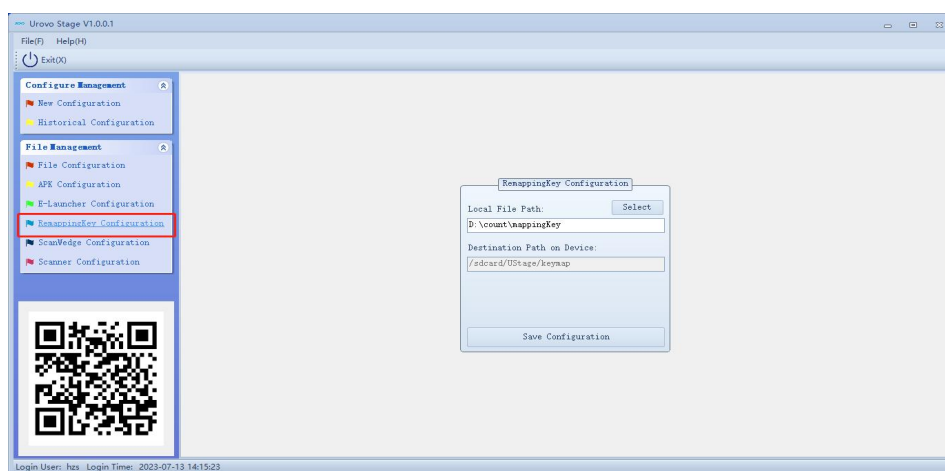


(6) RemappingKey Configuration: Import the configuration of RemappingKey to the device, and the path of key mapping to the device export is: System Settings-remap key-show key mapping list-upper right corner "..."-Export

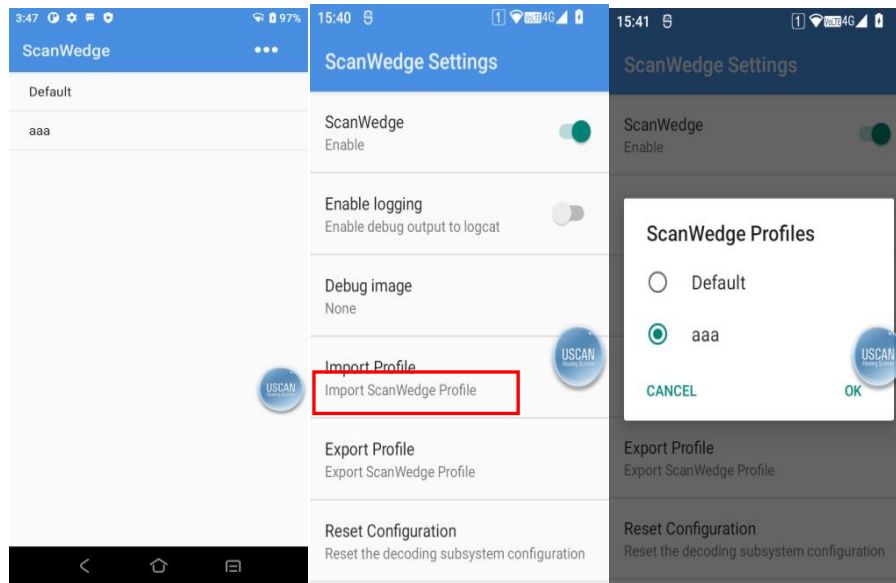


(Local apk path configuration: Key mapping is configured on the computer location)

(File distribution path configuration: Key mapping is configured on the device storage location)

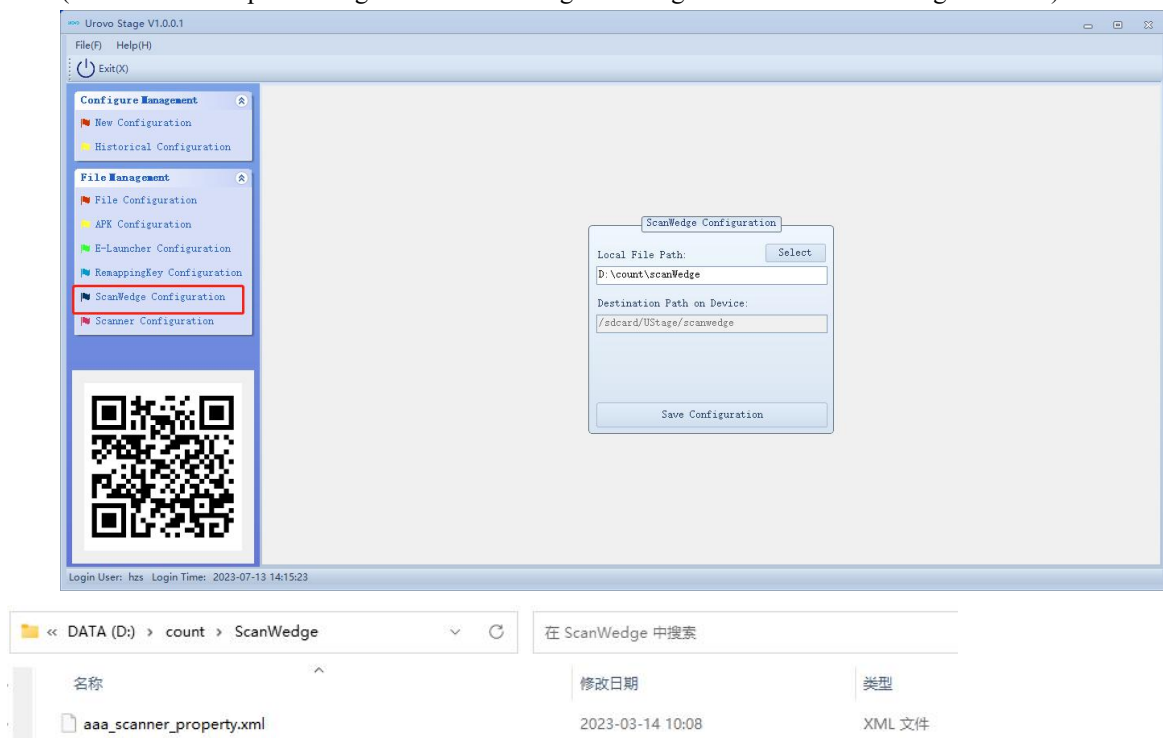


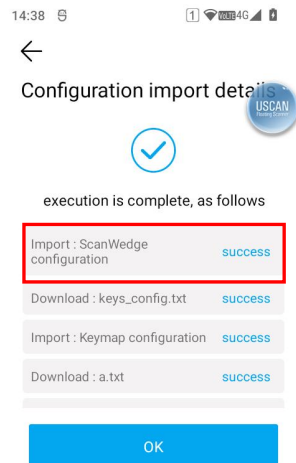
(7) ScanWedge Configuration : ScanWedge is a collection of multiple scan header files, Open the ScanWedge program, A new ScanWedge configuration, Configure the new ScanWedge, Click Settings-select the corresponding ScanWedge export, Import the ScanWedge configuration into the device, The name of the profile begins with the selected configuration name (the ScanWedge is actually a combination of multiple Scanner configurations), ScanWedge Can add multiple Scanner with different configurations, You can add one or more profiles when they are added to the background system.



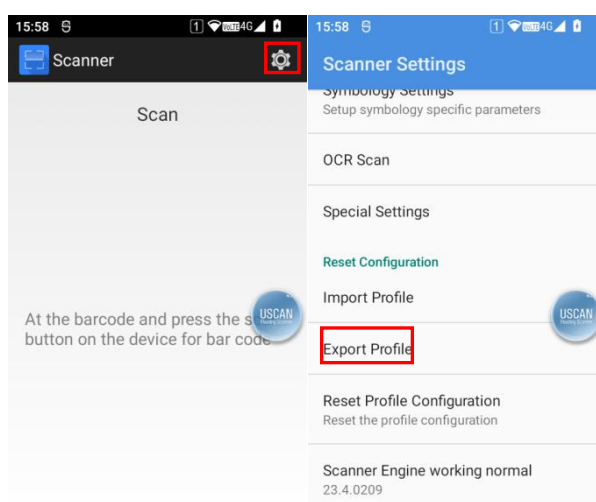
(Local apk path configuration: ScanWedge is located in the computer storage location)

(File distribution path configuration: ScanWedge is configured in the device storage location)





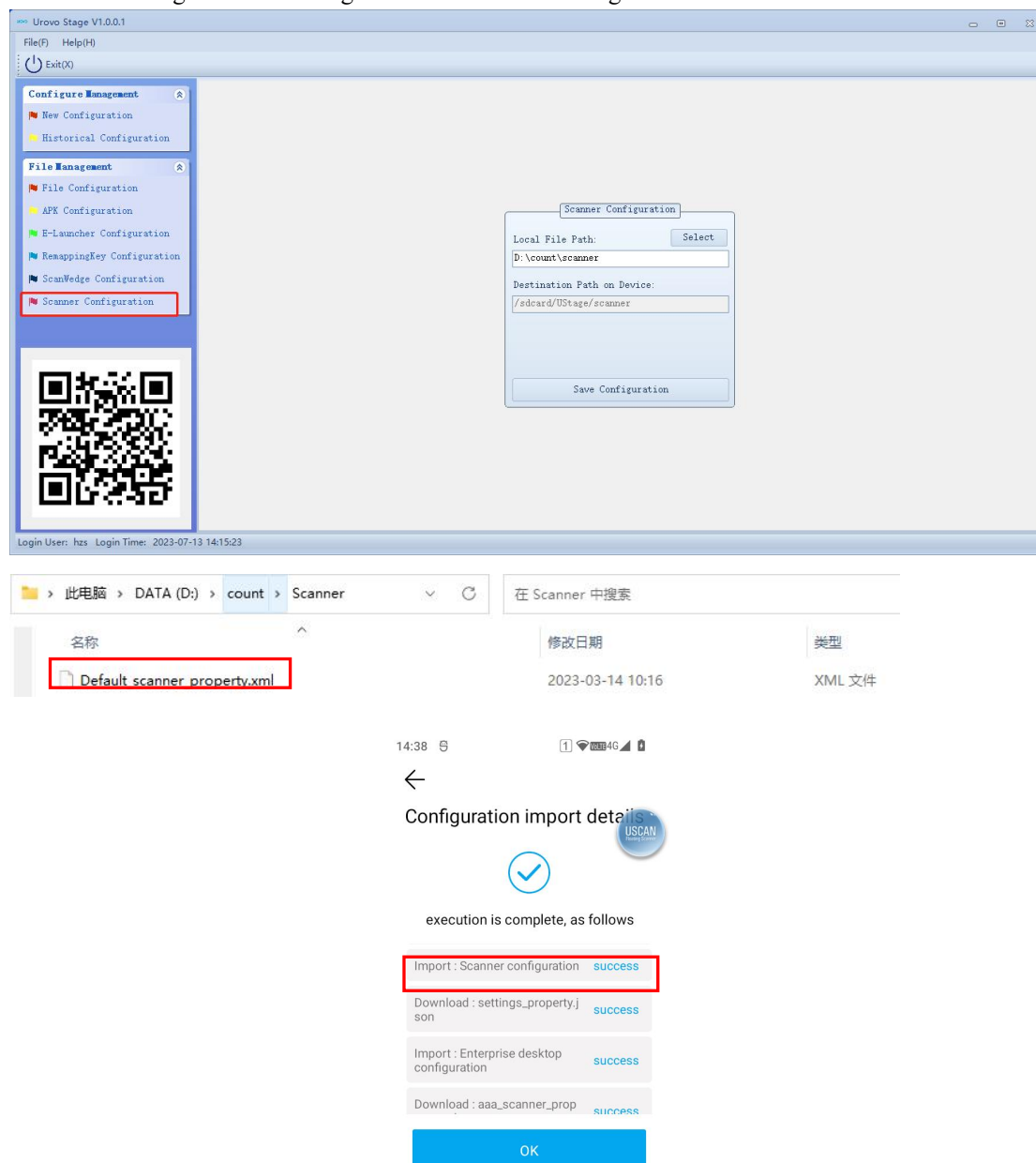
(8) Scan head configuration : The Scanner configuration is the scan head configuration, click the scan head-upper right corner setting-export the profile, this function is to import the Scanner configuration to the device



(Local apk path configuration: Scanner is located in the computer storage location)

(File distribution path configuration: Scanner is configured in the device storage location)

Automatic configuration of configuration files after scanning



(Note: Scan the QR code to execute all the configuration items in the left column successively, and if the current configuration item is not configured, skip the next configuration item.)

4. Device and computer set the synchronization range

Scan header settings

1. Suspension button
2. Enable the scan heads
3. Trigger the scan mode
4. Continuous scanning configuration: continuous scanning mode, multiple decoding timeout, continuous code scanning interval
5. Multiple barcode parameters: solve multiple barcodes, scan the number of bar codes each time, and fix the number of bar codes
6. Output mode: keyboard output, Intnet output, clipboard, input text box mode
7. Reader parameters: one-dimensional code characteristics, exposure, decoding viewfinder, other Settings
8. UDI data format: label ID
9. Advanced data formatting
- 10 Format atting basic data
11. Bar code setting
- 12.OCR Scan: OCR decoding mode, OCR template, base OCR template, custom OCR template

System Settings

1. System settings-WLAN related configuration
2. System setting-general related configuration
3. System Settings- -display some related configurations
4. System setting- -related configuration of the time part
5. System Settings-Notification of related configuration
6. System Settings- -System-related configuration
7. System Settings- -featured system-related configuration
8. System Settings- -Bluetooth configuration

ScanWedge The configuration

1. Default ScanWedge
2. Create a new ScanWedge

Featured system setting

1. Clear all third-party applications
2. Enable the screen dominating mode
3. Set time
4. Disable the camera
5. Disable the virtual keyboard
6. Disable the status bar
7. Disable the bottom button
8. Disable the OTA updates
9. Enable the screen dominating mode
10. Disable the left virtual key
11. Disable the HOME key
12. Disable the right virtual key
13. The input method will automatically pop up when scanning the code
14. Input method pop-up settings
15. Scan the key value is passed to the application
16. Automatic phone call recording
17. Screenshots of the three fingers
18. Fixed position on the screen

Key mapping configuration

1. Allow key key mapping
2. Key mapping
3. View the mapping button
4. The screen wakes up
5. Customize the PTT key broadcast

5. U Stage Description

U Stage Including the background system and terminal program, the manual is the background system use manual, need to consult the complete U Stage please contact the operation manual provider.