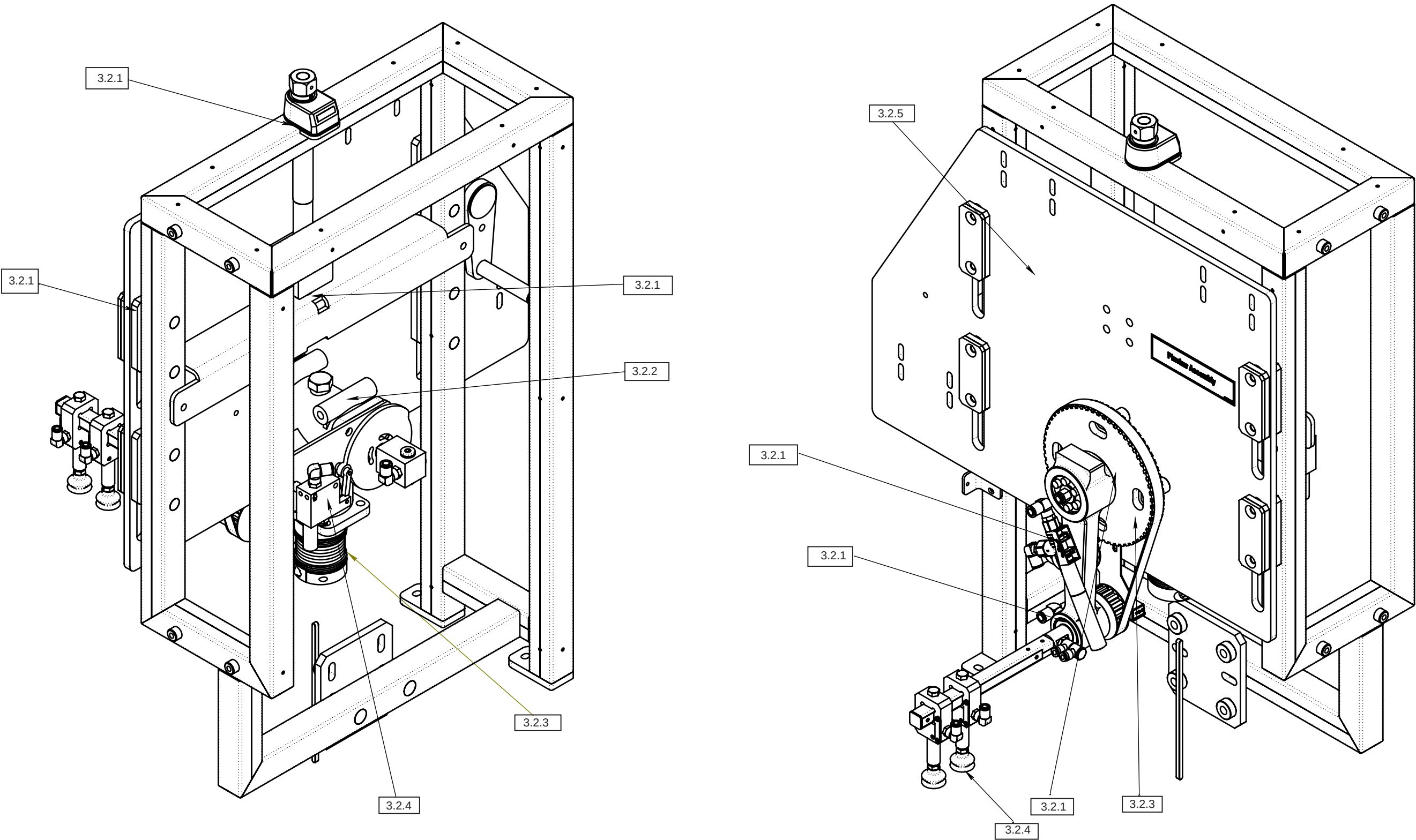


Some Components Are Hidden To Improve Clarity.

SURFACE FINISH	
As Machined	
Acid	
Glass Bead	
Orbital Sand	
Powder Coat	
Zinc Plate	
Anodise	
Polished	
Scotch Brite	
DeBurr	
ENP	
Blackodise	



Bector Automation
RML India Pvt. Ltd.
Plot No. 24, Gat. No. 613/1,
Kurli, Tal. - Khed,
Dist. Pune 410 501,
Maharashtra, India

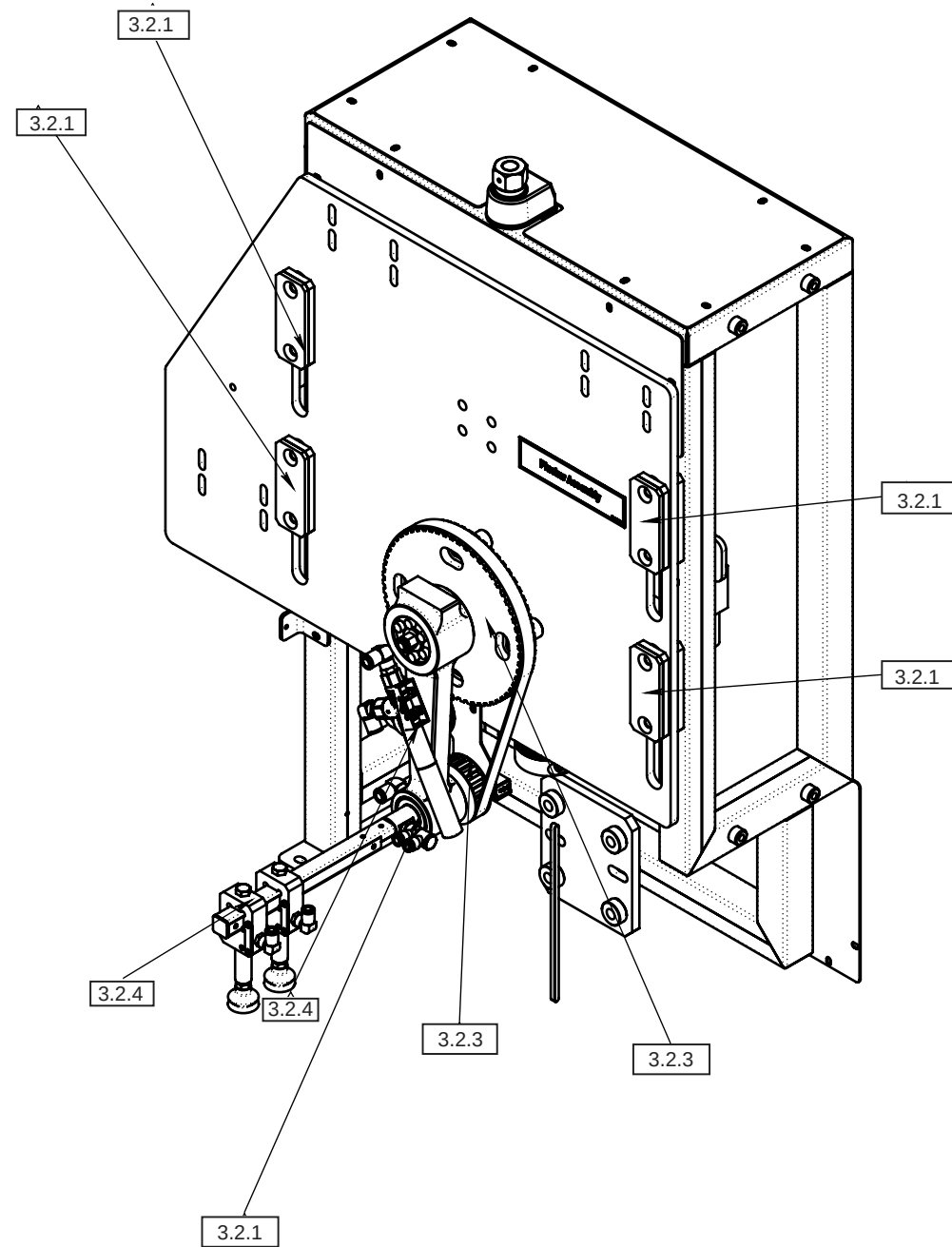
COPYRIGHT
© 2016 B.A.R. India Pvt. LTD.
THIS DRAWING MAY NOT BE
REPRODUCED OR TRANSMITTED
WITHOUT PRIOR PERMISSION

TOLERANCES		
NO DECIMAL PLACE	±0	+0.2 -0.2
ONE DECIMAL PLACE	±0.0	+0.1 -0.1
FABRICATION	±0	+1.0 -1.0
ALL DIMENSIONS ARE IN MILLIMETERS		

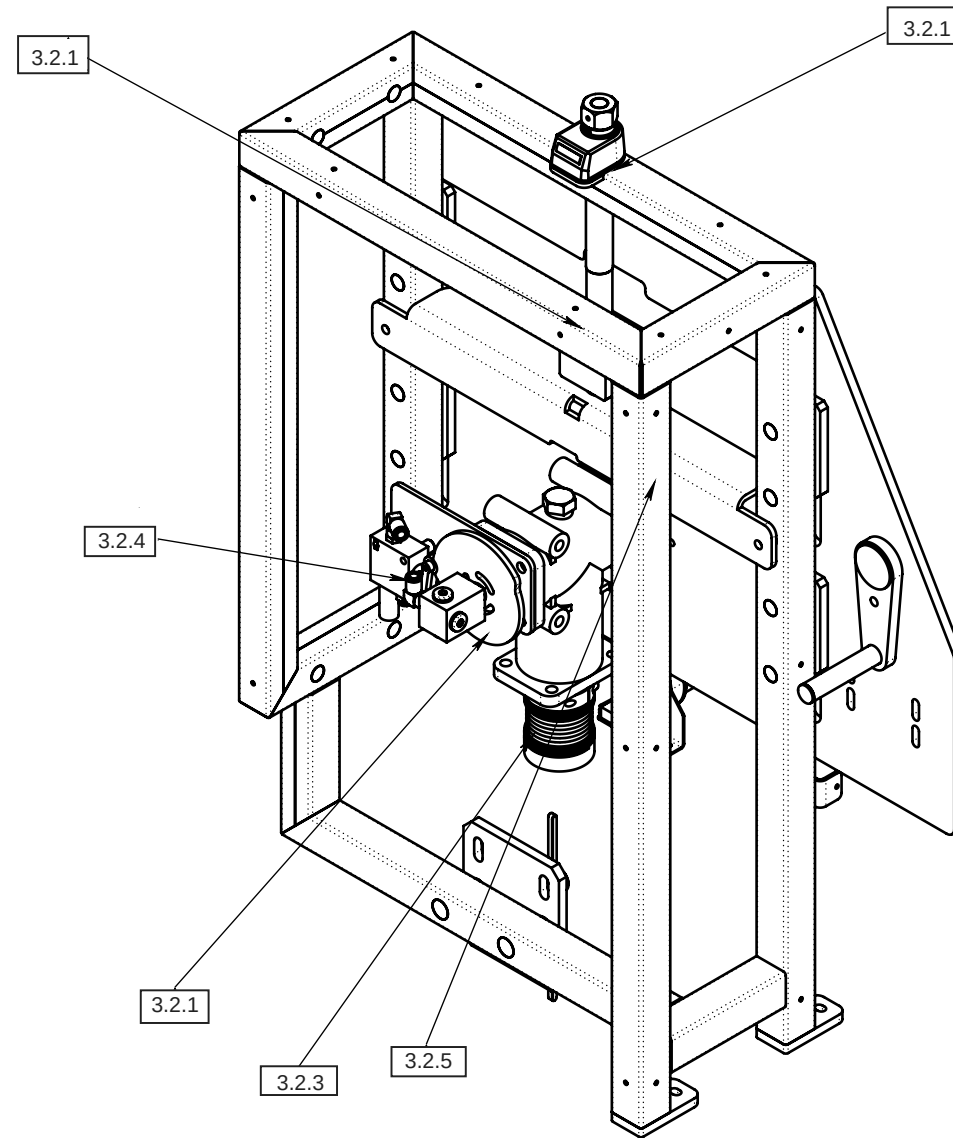
rml p715 Cartoner
Plucker
Plucker Sub Chassis Assy

MATERIAL:		CREATED FROM: 15119-1501	
APPROX. FINISHED WT. (K.g.): 64.291		COMPONENT COLOUR:	
DRAWING No.		REV.	
15794-1501		A	
PRINTED: 11/23/2018		SHEET	
DESIGN: RML		2/3	
DRAWN: M. Shirgaonkar		MODIFICATIONS	
REV	BY	DATE	DESCRIPTION
A	MS	05/04/16	Ratchet handle added

SURFACE FINISH	
As Machined	
Acid	
Glass Bead	
Orbital Sand	
Powder Coat	
Zinc Plate	
Anodise	
Polished	
Scotch Brite	
DeBurr	
ENP	
Blackodise	



Top Guard Is Hidden For Clarity



Top and Rear Guards Are Hidden For Clarity



Bector Automation
RML India Pvt. Ltd.
Plot No. 24, Gat. No. 613/1,
Kurli, Tal. - Khed,
Dist. Pune 410 501,
Maharashtra, India

COPYRIGHT
© 2016 B.A.R. India Pvt. LTD.
THIS DRAWING MAY NOT BE
REPRODUCED OR TRANSMITTED
WITHOUT PRIOR PERMISSION

TOLERANCES		
NO DECIMAL PLACE	=0	+0.2 -0.2
ONE DECIMAL PLACE	=0.0	+0.1 -0.1
FABRICATION	=0	+1.0 -1.0
ALL DIMENSIONS ARE IN MILLIMETERS		

rml p715 Cartoner
Plucker
Plucker Sub Chassis Assy

MATERIAL:				CREATED FROM: 15119-1501	
APPROX. FINISHED WT. (K.g.): 64.291		COMPONENT COLOUR:		DRAWING No.	REV.
				15794-1501	A
				PRINTED: 11/23/2018	SHEET
A	MS	05/04/16	Ratchet handle added	DESIGN: RML	3/3
REV	BY	DATE	MODIFICATIONS	DRAWN: M. Shirgaonkar	