

Application Note

IMO i3 controller and i3 Configurator software



This document guides you through the setup of proprietary vendor specific software installed on your PC. Your supervisor may provide you with additional or alternative instructions.

The document consists of standard instructions that may not fit your particular solution. Please visit our support website for latest revisions of documentation and firmware:

<http://www.secomea.com>

Version: 2.0, April 2012



Table of Contents

1.	Prerequisites for This Guide	3
2.	TCP Ethernet Access	4
3.	Serial Access via i3 Programming cable	10
4.	Ethernet connection via Windows XP under VMWare	14
5.	Serial connection via Windows XP under VMWare	16
5.1.	Startup order of VMWare, LinkManager and I3 Config software	18
Appendix A, Organizing COM ports in Windows		19
Notices		20

1. Prerequisites for This Guide

The following guide will assist you to setup a remote and online connection to the IMO equipment placed on the customer site using your IMO i3 Configuration software installed on your PC.

Prerequisites for this guide are:

- You have an operational LinkManager installed on your PC with a GateManager certificate that allows you to connect to the SiteManager agents.
- You have the IMO software installed.
- You have the IMO device agent installed and configured on the SiteManager at the remote site, and there is access between the SiteManager and the IMO PLC.
 - If you connect to the IMO i3 PLC using a i3 Programming cable, the PLC must be configured with agent device type **IMO/Serial** on the SiteManager. Furthermore, the default management port must be set to the corresponding MJ-jack.
 - If you connect to the IMO i3 PLC using a RJ45 cable directly connected to the PLC, the PLC must be configured with agent device type **IMO/Ethernet HMI** on the SiteManager. Furthermore, the default management port must be set to "Enet".

If any of these prerequisites are not met, you should contact the person / department responsible within your own company or at the company responsible hereof.

System Overview

The communication path is as follows:

I3 Config → **LinkManager** → GateManager → SiteManager → PLC.

This guide will elaborate on the components marked with **bold**.

The following system overview depicts a SiteManager 3134 at the customer location:



2. TCP Ethernet Access

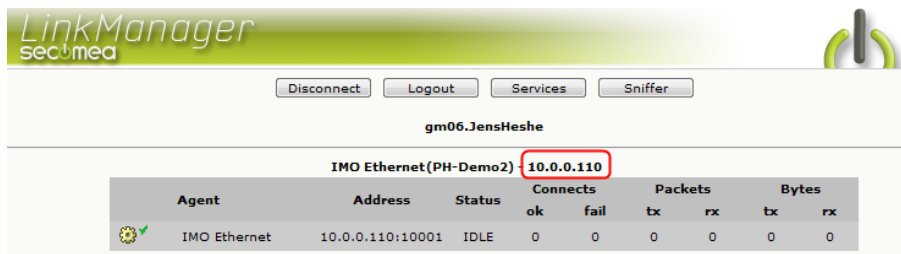
The following describes how to connect the IMO I3 Config to an IMO PLC that is attached to a SiteManager via Ethernet.

Note: A network attached PLC must be configured with agent device type **IMO/Ethernet HMI** on the SiteManager.

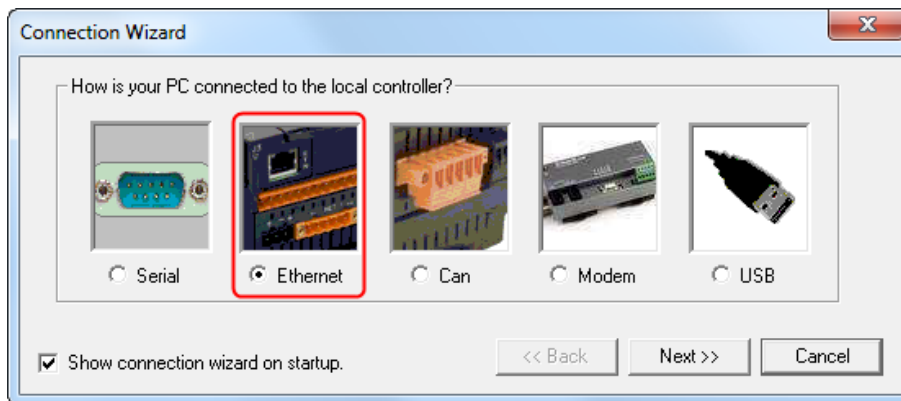
1. Locate the agent that represents you TCPI/IP attached IMO PLC



2. You will not see any activity on it yet. This only starts when you connect to the PLC via your project (Make a note of the IP address of the PLC):

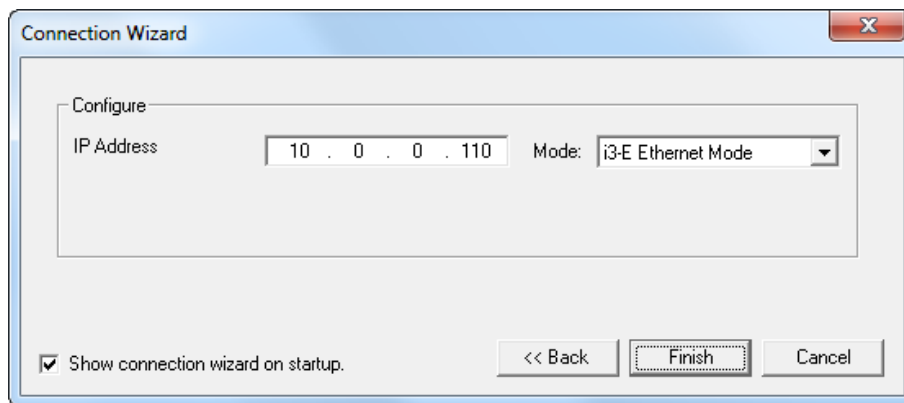


3. Start the I3 Config software and select "Ethernet" and click "Next".

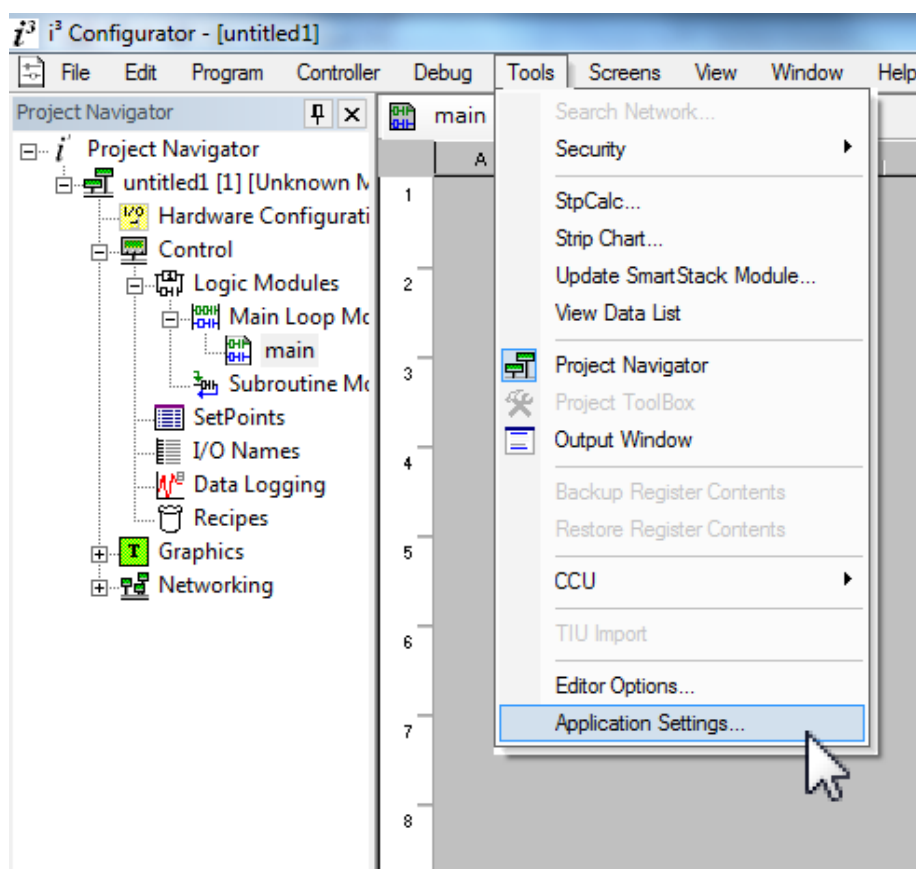


(If the Connection Wizard doesn't show on startup, select it from the Controller-menu)

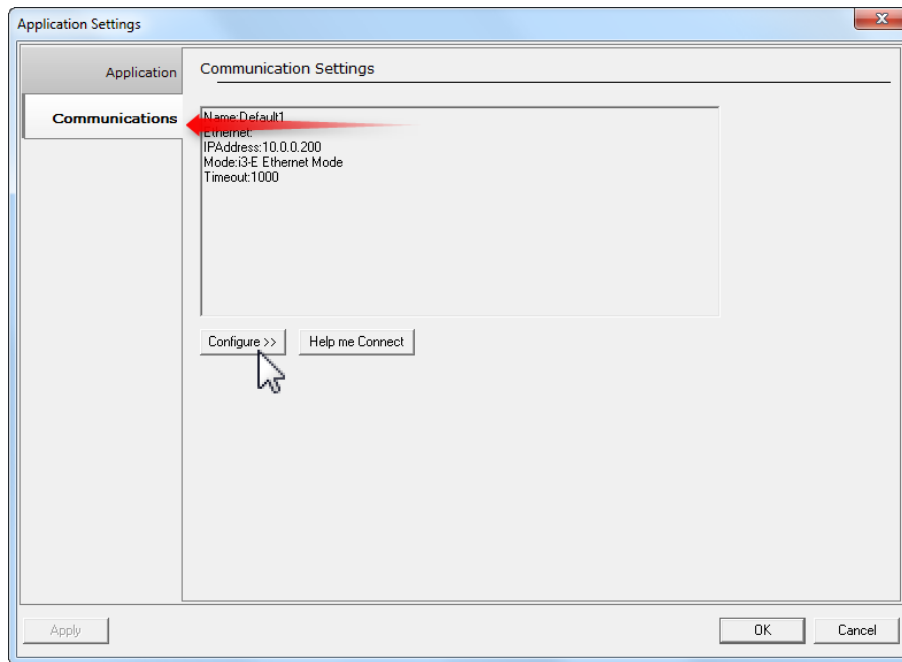
4. Type in the IP address (obtained from step 2), select i3-E Ethernet Mode and click "Finish".



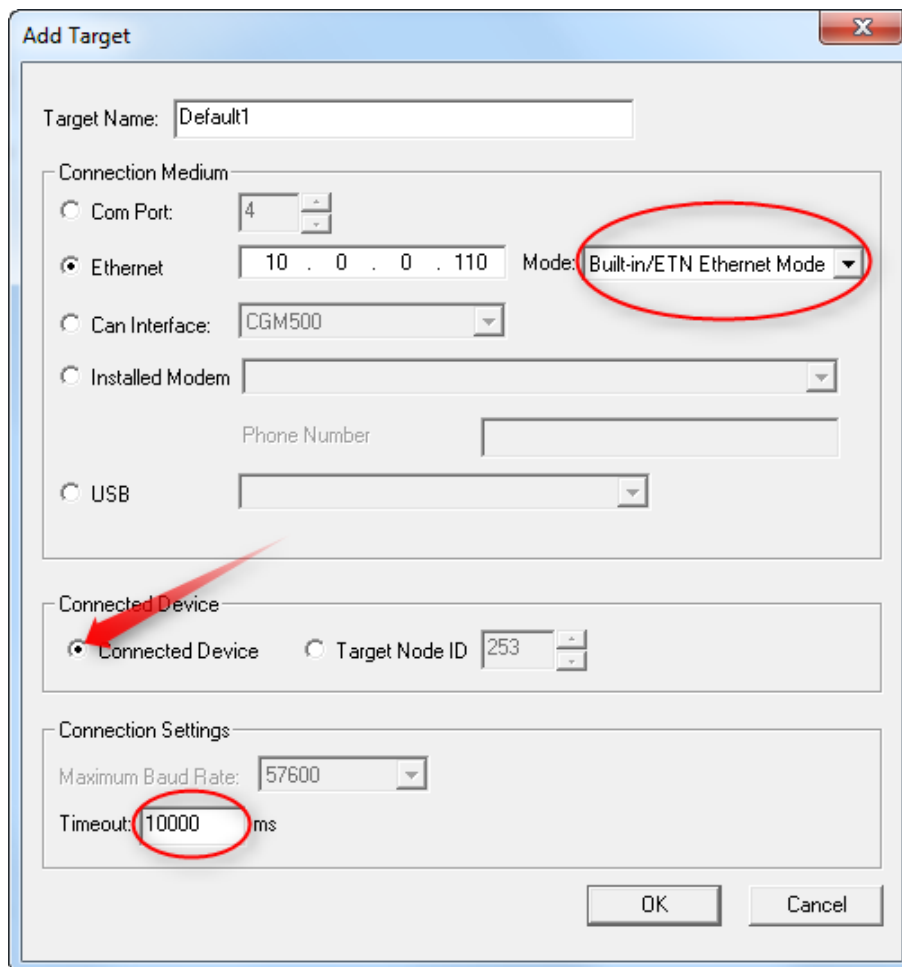
5. Please make sure your settings are correct.
 - a. Select Application Settings from the Tools menu.



- b. Select the tab Communications, and click Configure.



- c. If you are using the Built-in/ETN module, please select it from the Mode drop-down list, select Connected Device and set the Timeout to a higher value than 10000 (maximum value is 60000).



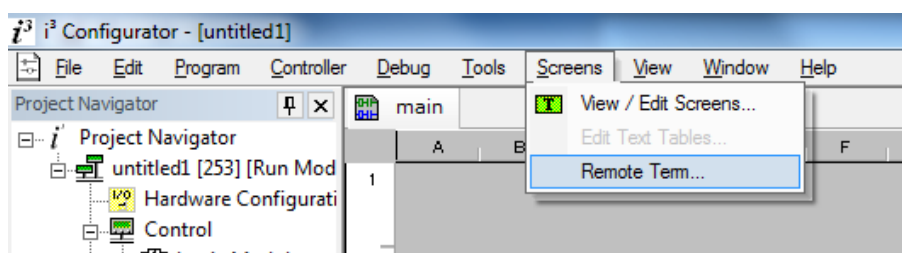
- d. If you are using the i3-E Ethernet module, please select it from the Mode drop-down list, select Target Node ID and set the correct value (default is 253). Set Timeout to a higher value than 10000 (maximum value is 60000).

The 'Add Target' dialog box is shown with the following settings:

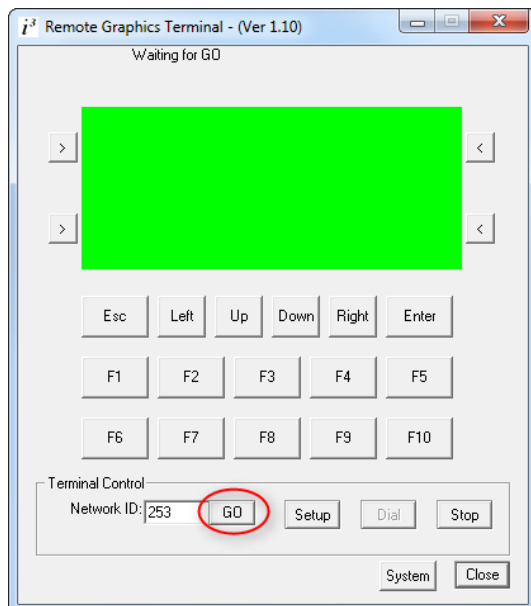
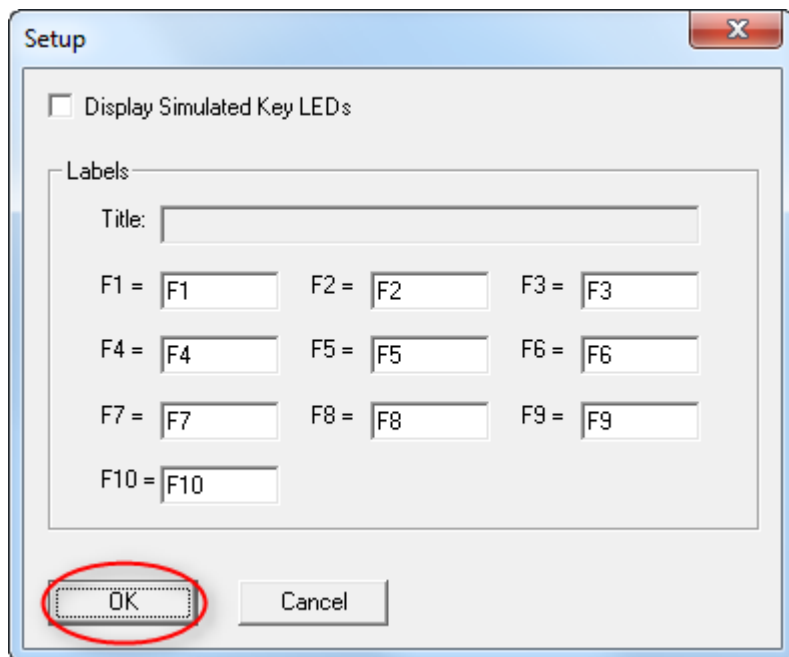
- Target Name: Default1
- Connection Medium:
 - Com Port: 4
 - ☒ Ethernet: 10.0.0.110, Mode: i3-E Ethernet Mode (circled in red)
 - Can Interface: CGM500
 - Installed Modem: [empty]
 - Phone Number: [empty]
 - USB: [empty]
- Connected Device:
 - ☐ Connected Device
 - ☒ Target Node ID: 253 (indicated by a red arrow)
- Connection Settings:
 - Maximum Baud Rate: 57600
 - Timeout: 10000 ms (circled in red)

Buttons: OK, Cancel

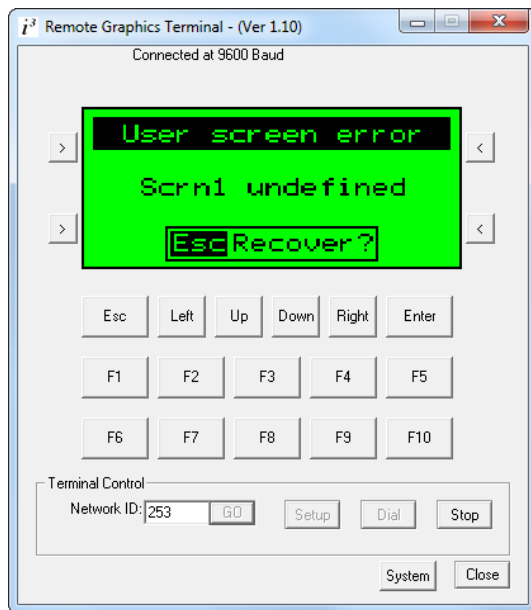
6. The I3 Config is now connected to the PLC. To verify the connection, you can select "Screens → Remote Term".



7. Click OK to the next screen, then GO.



8. Now, the screen will show the screen of the HMI.



9. You are now online with the PLC. You can now observe data traffic in the LinkManager:

LinkManager
sec:mea

Disconnect Logout Services Sniffer

gm06.JensHeshe

IMO Ethernet		(PH-Demo2) - 10.0.0.110							
Agent	Address	Status	Connects		Packets		Bytes		
			ok	fail	tx	rx	tx	rx	
IMO Ethernet	10.0.0.110:10001	UP:1	2	0	1,312	1,312	3,951	34,762	

3. Serial Access via i3 Programming cable

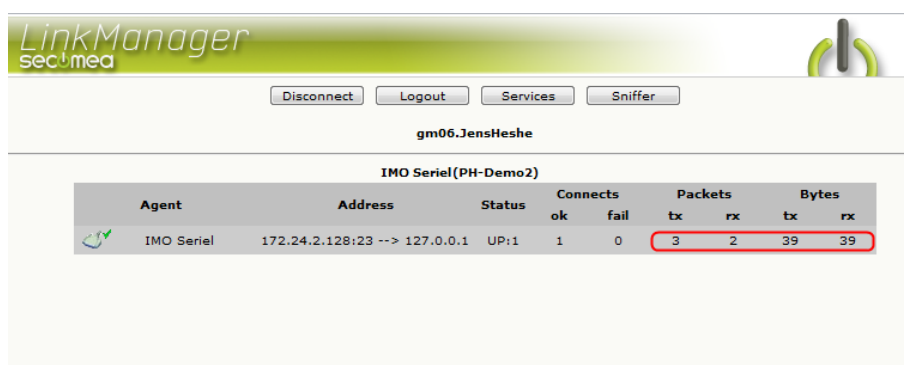
The following describes how to connect the IMO I3 Config to an IMO PLC that is attached to a SiteManager via a RJ45-to-DB9 IMO cable (part nr. i3PC45).

Note: A Serial attached PLC (Such as the IMO i3A12X/10A01-SOOF PLC) must be configured with agent device type IMO/Serial PLC on the SiteManager, and the PLC must be configured to use the corresponding MJ-jack as the default management port.

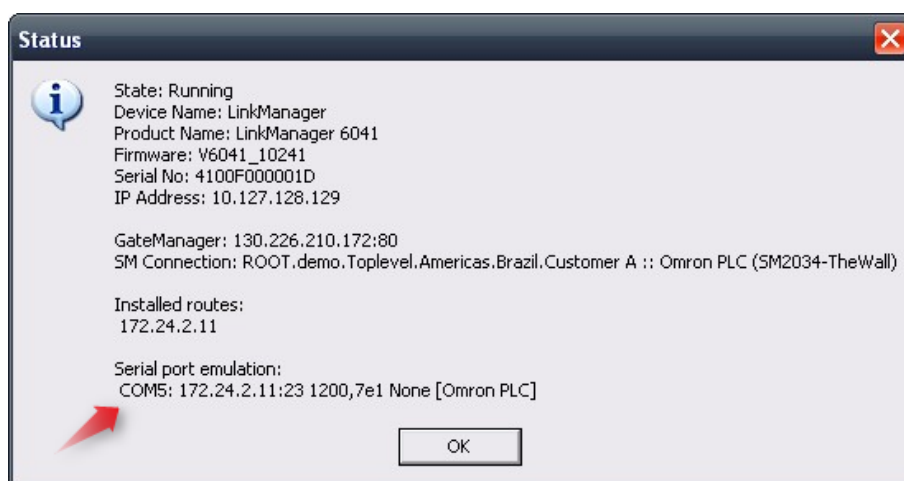
1. Locate the agent that represents your network attached IMO PLC



2. When connecting the agent, you should see some activity in the tray icon area, which is the auto configuring of a virtual serial port. If your SiteManager, and IMO PLC is correctly attached, you should also see the status of the agent become OK, and a few bytes of traffic:

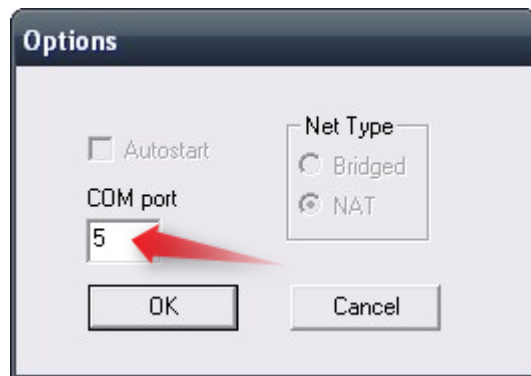


3. Now right click the LinkManager system tray Icon, and select **Status**. Make note of the Serial port that has been assigned (in this case COM5):



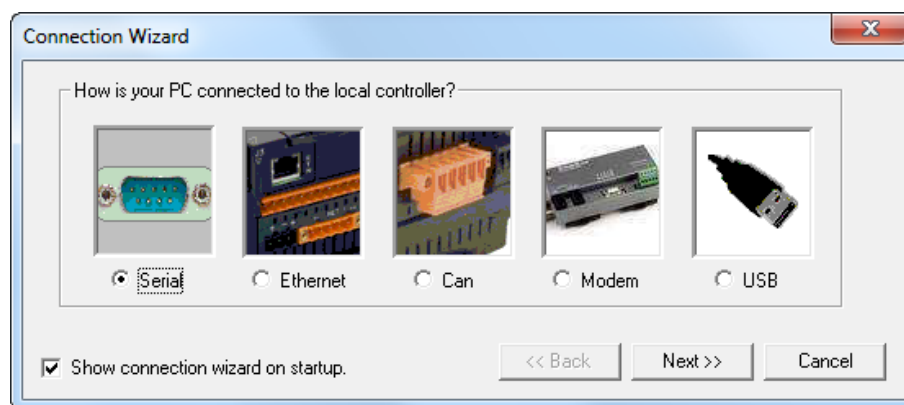
Right click the LinkManager system tray icon again, and select **Options**. Enter the number of the COM port you found under status. This will ensure that you will always get this port in the future.

IMPORTANT: if you change the port you must stop and start the LinkManager.

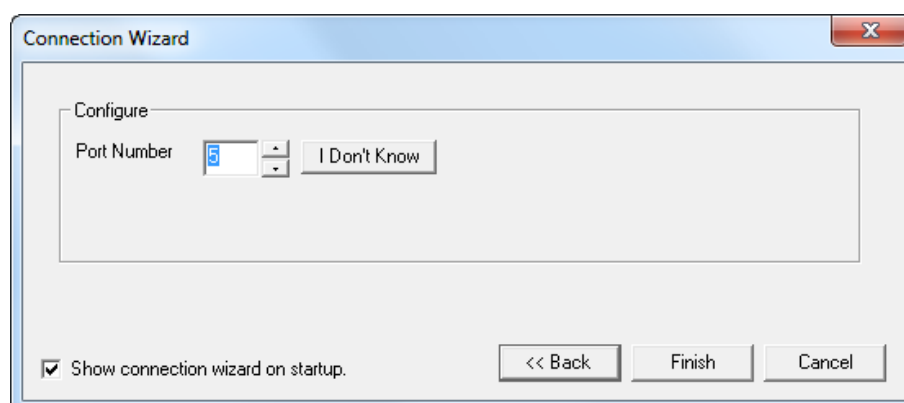


Note: You can also force another COM port (e.g. COM2). Just ensure in your Windows device manager, that the port is not conflicting with an existing COM port. See Appendix A for info on how to organize COM ports.

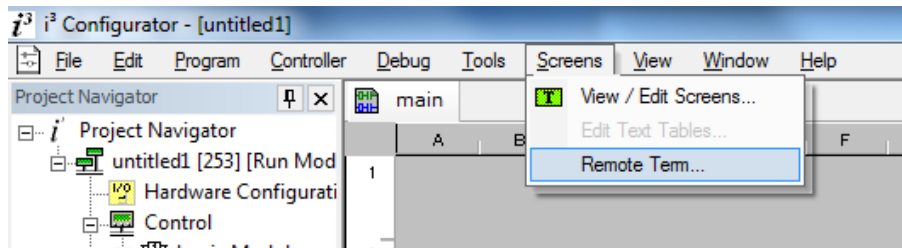
4. Start the i3 Config software, and select “Serial” and click “Next”.



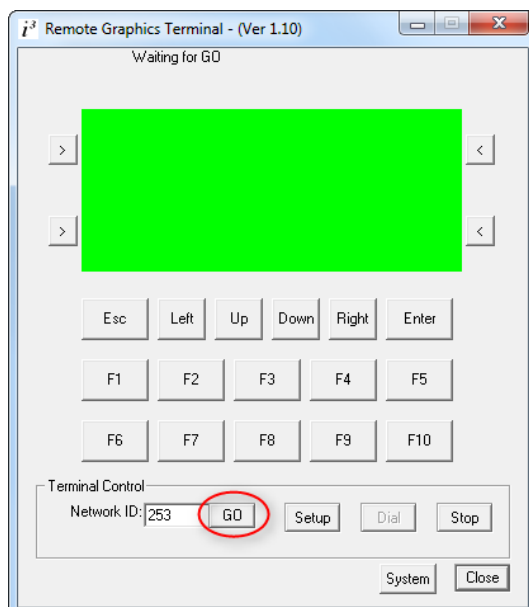
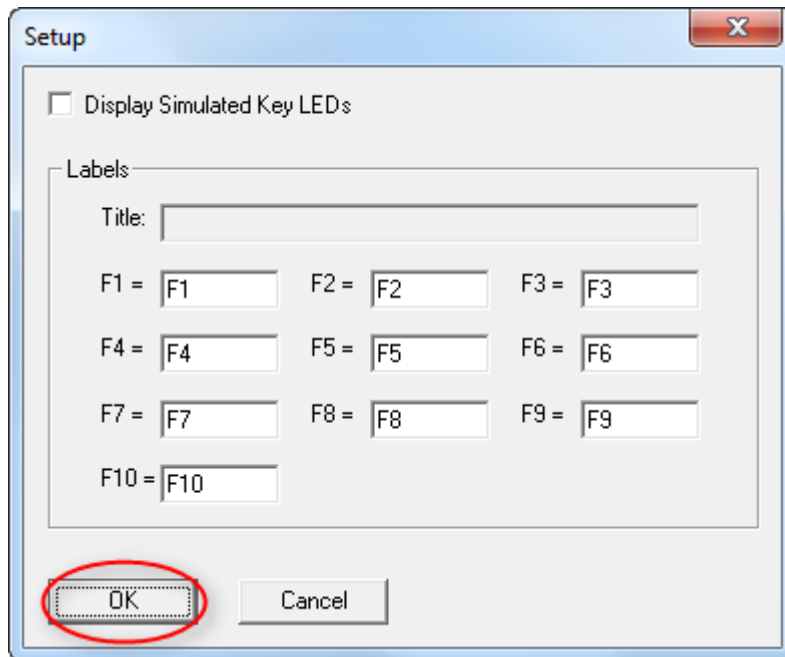
5. Select the Port Number obtained from section 3. Click “Finish”.



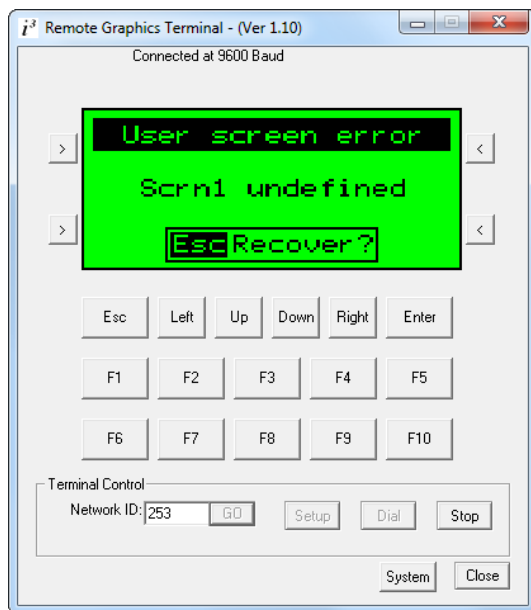
6. The I3 Config is now connected to the PLC. To verify the connection, you can select “Screens → Remote Term”.



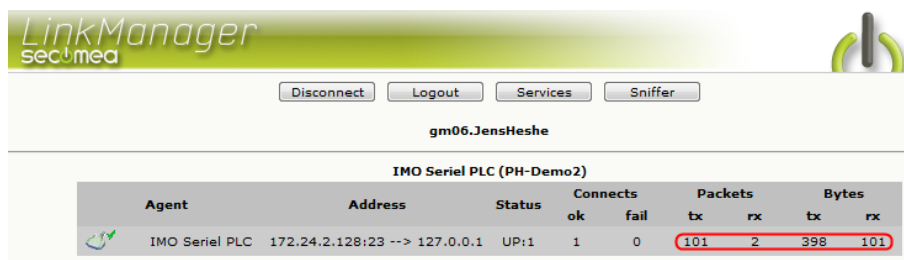
7. Click OK to the next screen, then GO.



8. Now, the screen will show the screen of the HMI.



9. You are now online with the PLC. You can now observe data traffic in the LinkManager:



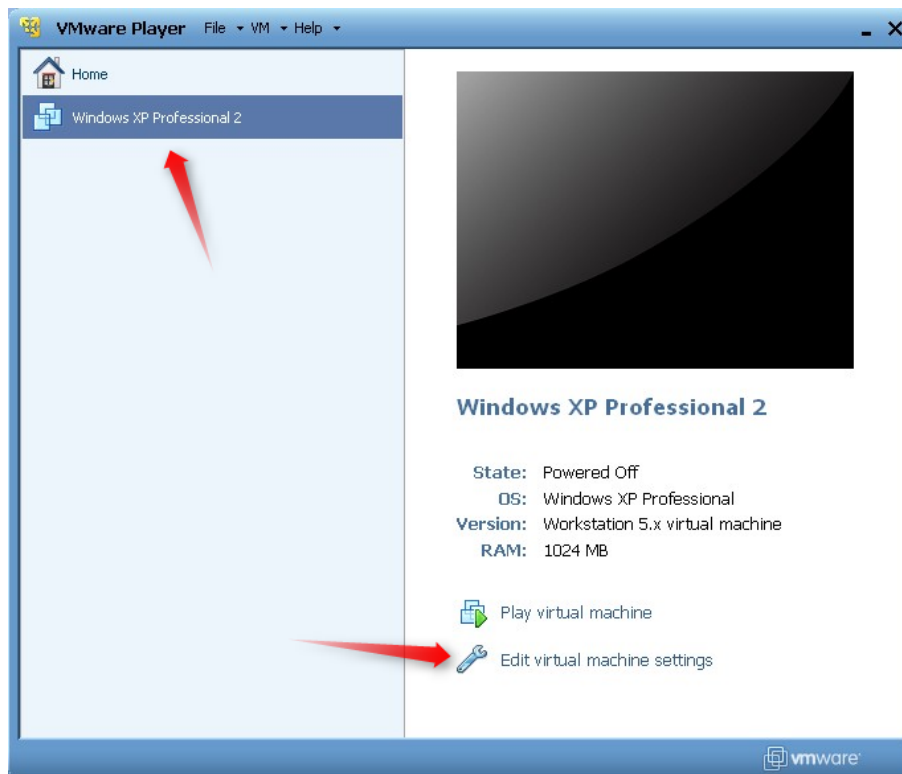
4. Ethernet connection via Windows XP under VMWare

You can run the I3 Config inside a VMWare engine, to an IMO PLC that is Ethernet attached to a SiteManager.

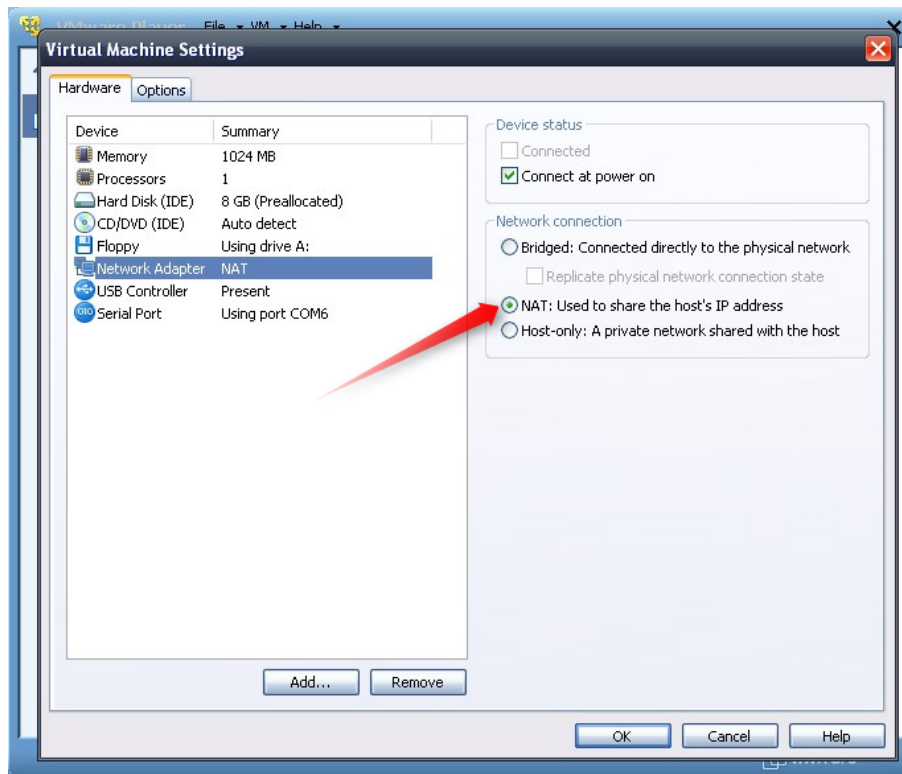
Note: LinkManager must be installed on the hosting machine, and NOT inside the VMWare Windows XP image. LinkManager cannot run inside a VMWare virtual machine.

The following illustrates VMWare Player, which can be downloaded from <http://www.vmware.com/support/product-support/player/>

1. Locate your Windows XP that has I3 Config software installed, and enter **Edit virtual machine settings**.



2. Make sure the Network Adapter settings is set to **NAT**:



3. Start the VMWare engine and on the host PC start LinkManager.
4. Follow the procedure of section **2 TCP Ethernet Access** to get access to the PLC via LinkManager

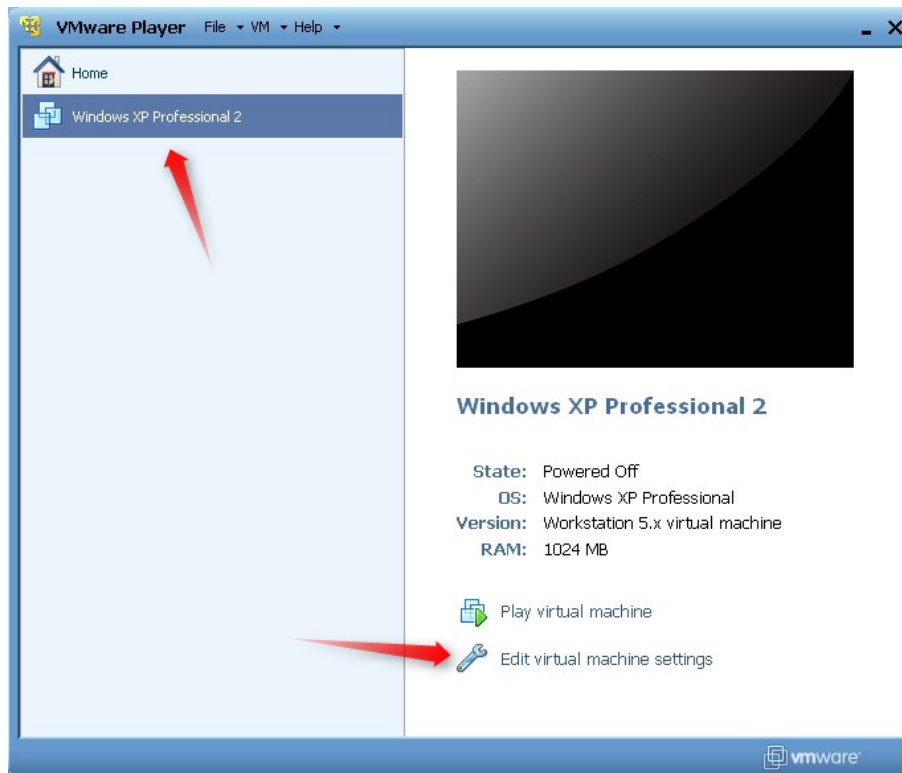
5. Serial connection via Windows XP under VMWare

You can run the I3 Config inside a VMWare engine, to an IMO PLC that is Serial attached to a SiteManager.

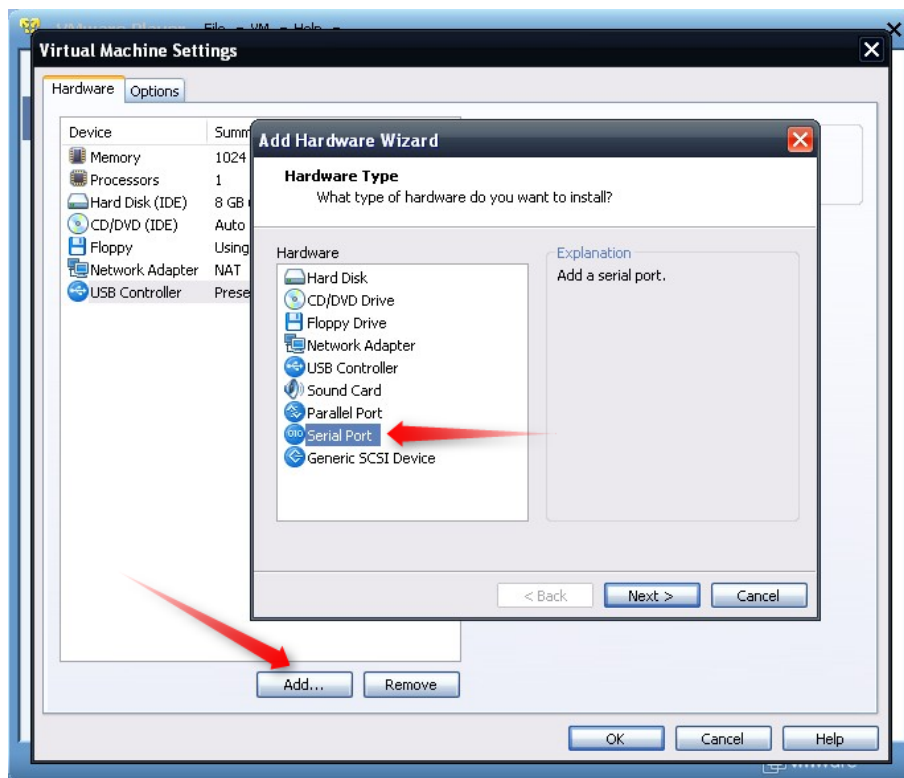
Note: LinkManager must be installed on the hosting machine - and NOT inside the VMWare Windows XP image. LinkManager cannot run inside a VMWare virtual machine.

The following illustrates VMWare Player, which can be downloaded free of charge from <http://www.vmware.com/support/product-support/player/>

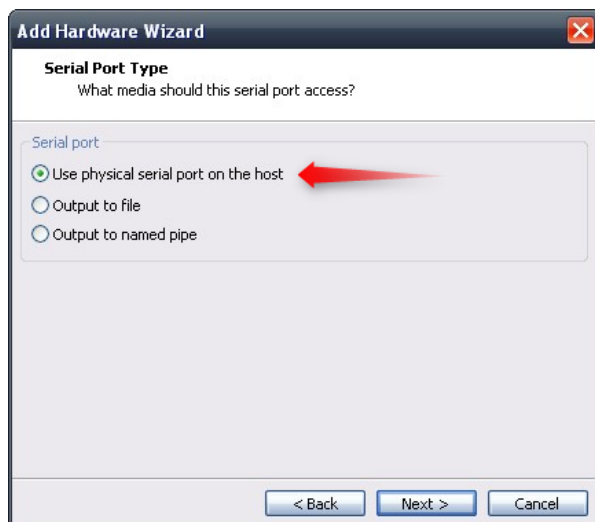
1. Follow step 1-3 of section 3 **Serial Access via i3 Programming cable** on page 10. This will create a COM port even if the PC does not have a physical COM port.
2. Locate your Windows XP that has I3 Config software installed, and without starting it, enter **Edit virtual machine settings**.



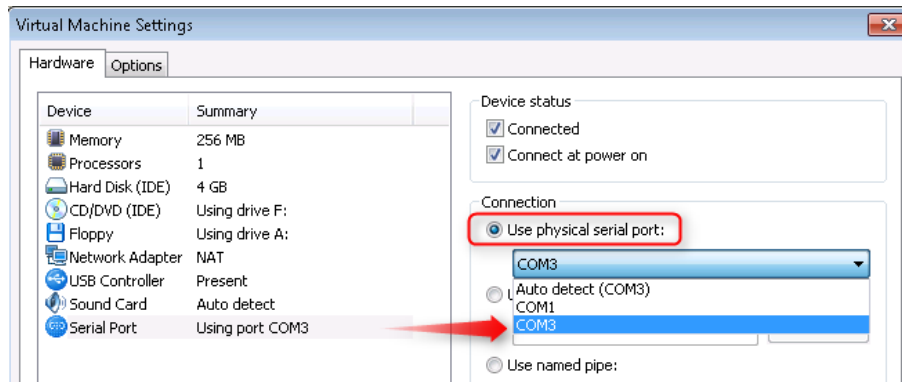
3. Add Serial Port to the Hardware list (if it does not already exist).



4. Select "Use physical port" (Even though LinkManager makes a virtual COM port, VMWare sees it as a physical port)



5. Set the port to the COM port used by the LinkManager (see section **3 Serial Access via i3 Programming cable** on page 10.)



6. If VMWare does not allow you to add a Serial port, it may be because the PC does not have a physical Serial port.
7. Press **OK** twice, and select the Select **Finish** and **OK**, Start the VMWare WindowsXP image, and start the I3 Config.
8. Follow the procedure described in section **3 Serial Access** on getting access to the PLC via LinkManager.

Note: VMWare will typically make the physical COM port of the host system (e.g. COM3) appear to the virtual OS as COM1. You should configure the I3 Config to use the port of VMWare (COM1) and not the physical port of the host system (COM3) that is used by LinkManager.

5.1. Startup order of VMWare, LinkManager and I3 Config software

If you have already preset a COM port in LinkManager as well as in VMWare, the startup order would be irrelevant. You can stop and start the components individually.

If you encounter problems, or you have changed the COM port setting of LinkManager it is recommended to do the following:

1. Stop the VMWare engine.
2. Stop LinkManager completely.
3. Start LinkManager.
4. Connect to the Serial PLC and check the assigned COM port under Status (by right-clicking the LinkManager tray icon)
5. Check the COM port settings of the Virtual Machine Settings of the Windows image with the I3 Config software.
6. Start the VMWare image.
7. Start I3 Config software and connect to the PLC

Appendix A, Organizing COM ports in Windows

Clean up Windows Registry for redundant COM ports:

You may experience that older versions of the IMO software require a lower COM port number. In case your PC assigns a COM port of e.g. 13, it may be due to previous installs of virtual COM ports from in relation to installation of other programs.

You can clean your PC for redundant COM ports in Windows registry:

1. Open regedit (Start → run → Regedit)
2. Navigate to:

**HKEY_LOCAL_MACHINE\SYSTEM\CurrentControlSet\Control\COM
Name arbiter**

3. In the ComDB set all values to 00
4. Restart your PC

Enable LinkManager to use COM1:

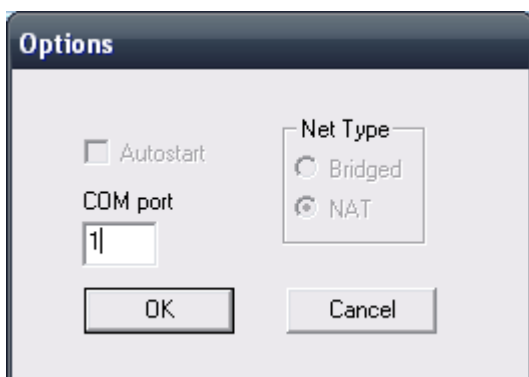
If you prefer the COM port to be COM1:

Even if no COM ports are installed on the PC, Windows will never assign a COM port lower than COM3 to the LinkManager. You therefore have to do the following to force LinkManager to use COM1:

1. Open Windows Control Panel → System → Hardware → Device Manager → Ports (COM & LPT).
2. If there already are physical COM ports listed, you must re-assign the port numbers to free up COM1.

Right click a COM port and select Properties → Port Settings → advanced

3. Change the COM port number in the drop down list.
4. Restart your PC.
5. Right click the LinkManager system tray icon and select Options.
6. Enter 1 in the COM port field.



7. Stop and Start the LinkManager and start the Serial agent.

Notices

Publication and copyright

© **Copyright Secomea A/S 2012.** All rights reserved. You may download and print a copy for your own use. As a high-level administrator, you may use whatever you like from contents of this document to create your own instructions for deploying our products. Otherwise, no part of this document may be copied or reproduced in any way, without the written consent of Secomea A/S. We would appreciate getting a copy of the material you produce in order to make our own material better and – if you give us permission – to inspire other users.

Trademarks

SiteManager™, LinkManager™ and GateManager™ are trademark of Secomea A/S. Other trademarks are the property of their respective owners.

Disclaimer

Secomea A/S reserves the right to make changes to this publication and to the products described herein without notice. The publication of this document does not represent a commitment on the part of Secomea A/S. Considerable effort has been made to ensure that this publication is free of inaccuracies and omissions but we cannot guarantee that there are none.

The following paragraph does not apply to any country or state where such provisions are inconsistent with local law:

SECOMEA A/S PROVIDES THIS PUBLICATION "AS IS" WITHOUT WARRANTY OF ANY KIND, EITHER EXPRESS OR IMPLIED, INCLUDING, BUT NOT LIMITED TO, THE IMPLIED WARRANTIES OF MERCHANTABILITY OR FITNESS FOR A PARTICULAR PURPOSE

SECOMEA A/S SHALL NOT BE LIABLE FOR ANY DIRECT, INDIRECT, INCIDENTAL, CONSEQUENTIAL, OR OTHER DAMAGE ALLEGED IN CONNECTION WITH THE FURNISHING OR USE OF THIS INFORMATION.

Secomea A/S
Denmark

CVR No. DK 31 36 60 38

E-mail: sales@secomea.com
www.secomea.com