

Welcome Back C (Cari)!

It looks like you have 0 overdue assignment(s), 0 assignment(s) due soon, and 0 assignment(s) coming up.

Don't forget to check your calendar to see what's coming up!


 [Student At A Glance Report](#)

 [Calendar](#) **0**  [Overview](#)

Filtered Courses*


ABC 123 #####

Last Access (Days)

ABC 123 ##### 

 0-2  3  >4

Announcements (Days)

ABC 123 ##### 

 0-2  3  >3

2

Total Assignments Due*

Assessment task(s) with unknown due dates found. Contact Instructor

Data last updated -19 hours ago at Saturday Apr 08 11:41:16+00:00 (UTC+2)

Upcoming Assessments Visible in clickUP

There are no assessments due in the next 7 days. Click the '[+] More info' button to check if any assessments are due after 7 days. If the '[+] More Info' button is not visible, then no upcoming assessments have been found.

 Due Date Unknown ABC 123 - #####
Attendance

[More info](#)

Course Performance

0

Total Unread Staff Posts*

0

Total Unread Student Posts*

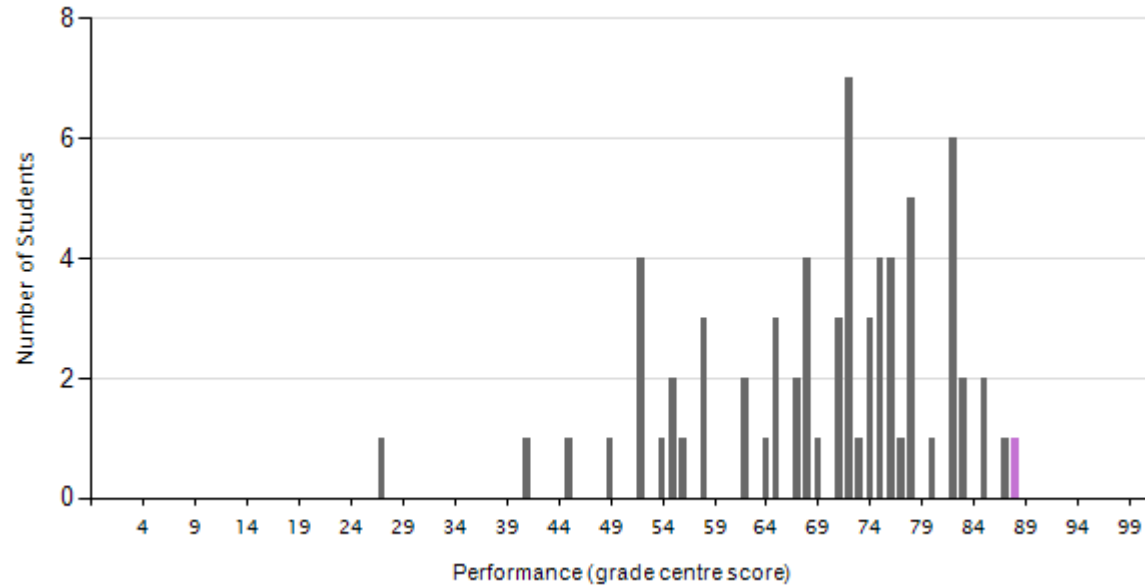
46%

% Items Accessed*

0

Total Unread Announcements

The following charts look at Course Performance with particular attention on the Marks in the grade centre. This data is an indication of your level of achievement at a particular date and may or/may not incorporate all assessment tasks.



88

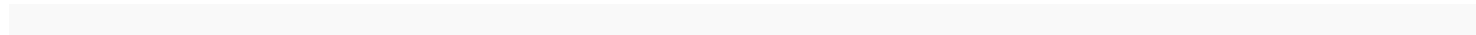
Your Average Mark so Far

100

Class Standing (%Tile)

Item	Mark	Average	Rank
Class Test 20 March 20##	29 (/30)	24.25 (/30)	2 (/69 in cohort)

Total Interactions ⊕



What does this mean?

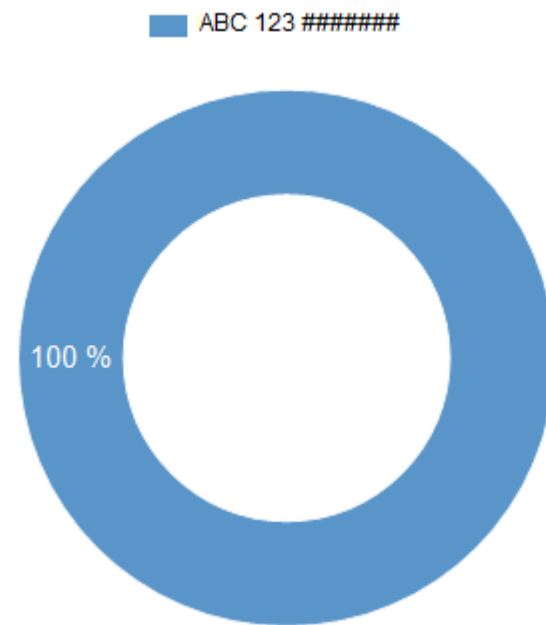
This is the total number of interactions (basically clicks) in your engagement with clickUP. It adds up all your clicks to come up with this figure.

What can I do now?

- Ensure you allocated enough time to engage with the learning material frequently. For more information, visit the FLY at UP web (www.up.ac.za/fly@up) for managing your time and working consistently.
- Ask for advice. Make an appointment with your Faculty Student Advisor. For more go to Faculty

FLY at UP

FACULTY STUDENT ADVISOR



6

clicks this week

14

clicks last week

▼ -4.0%

from the previous week

Subject Item Analysis ⊙

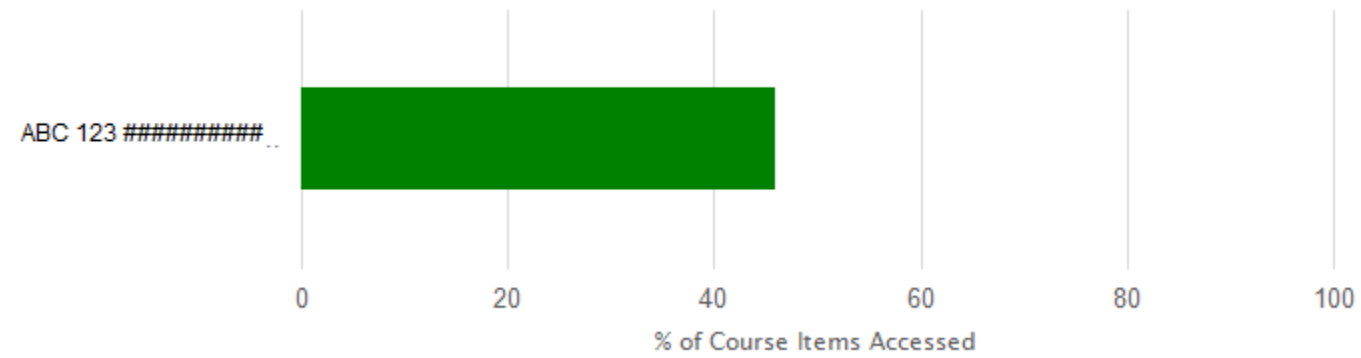
What does this mean?

This is the percentage of subject items accessed to date. It represents the items you have accessed per subject against the number of subject items available.

What can I do now?

- Unsure how to interpret feedback?
- How do you think you could improve your grades? Reach out to your tutor(s) or lecturer(s) and visit the FLY at UP web (www.up.ac.za/fly@up) to aim for a good semester mark.

FLY at UP



** Click on the chart results above to launch the interactive drilldown report*

Grade Centre totals



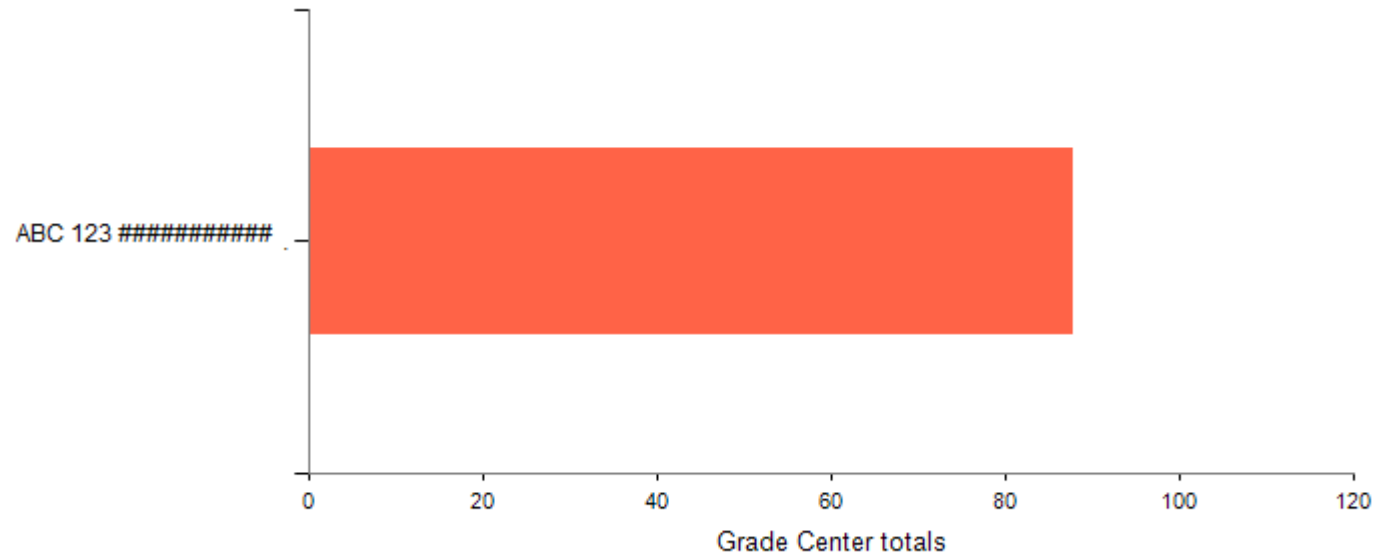
What does this mean?

This is your cumulative score for the assessments in the courses that you have enrolled in.

What can I do now?

- Have you read feedback from your tutors / lecturers on previous assessments?
- Unsure how to interpret feedback?
- How do you think you could improve your grades? Reach out to your tutor(s) and visit the FLY at UP web (www.up.ac.za/fly@up) to aim for a good semester mark.

FLY at UP



Welcome Back C (Cari)!

It looks like you have 0 overdue assignment(s), 0 assignment(s) due soon, and 0 assignment(s) coming up.

Don't forget to check your calendar to see what's coming up!

 [Student At A Glance Report](#)

 [Calendar](#) 0  [Overview](#)

Filtered Courses*

ISE 801 System Eng...



Assessment task(s) with unknown due dates found. Contact Instructor

Data last updated -19 hours ago at Saturday Apr 08 11:41:16+00:00 (UTC+2)

April 20##

Sunday	Monday	Tuesday	Wednesday	Thursday	Friday	Saturday
						1

2	3	4	5	6	7	8
9	10	11	12	13	14	15
16	17	18	19	20	21	22
ABC 123- Group Assig						
23	24	25	26	27	28	29
30						

 Upcoming - Not Submitted  Submitted