

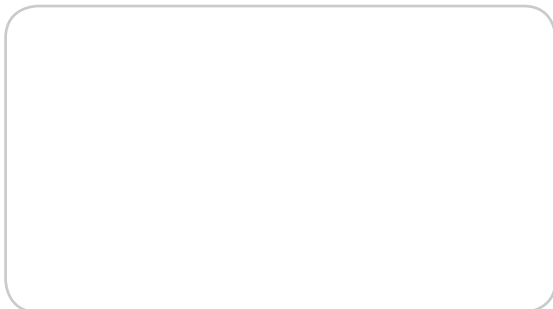
HAITIAN INTERNATIONAL HOLDINGS LIMITED
Unit 1105 Level 11
Metroplaza Tower 2
223 Hing Fong RD Kwai Fong N.T
haitian@mail.haitian.com
www.haitian.com

NINGBO HAITIAN HUAYUAN MACHINERY CO., LTD.
Export Processing Zone, Ningbo 315800 China
+86-574-86177242
+86-574-86221864
haitian@mail.haitian.com
www.haitian.com

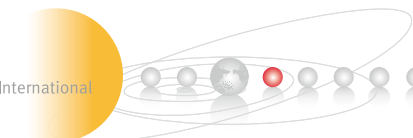
Haitian Mars^{2S} Series
Specifications / International
600-12000KN



Haitian Partner:



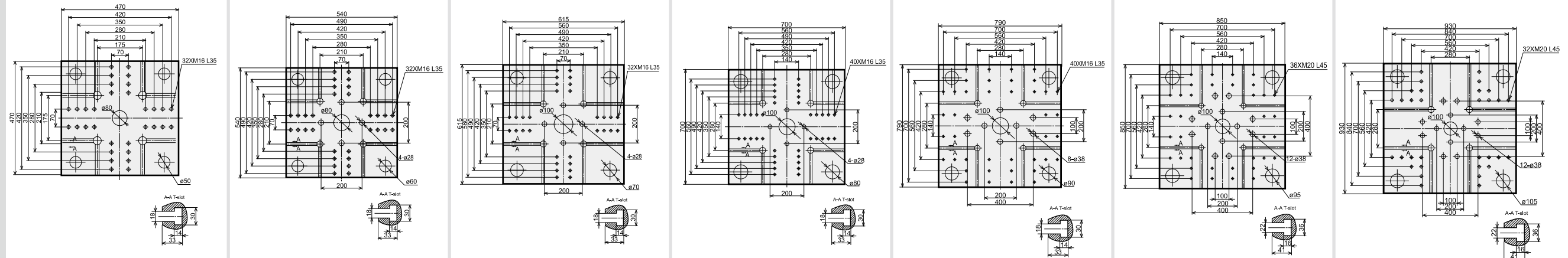
HT 20180530-IV



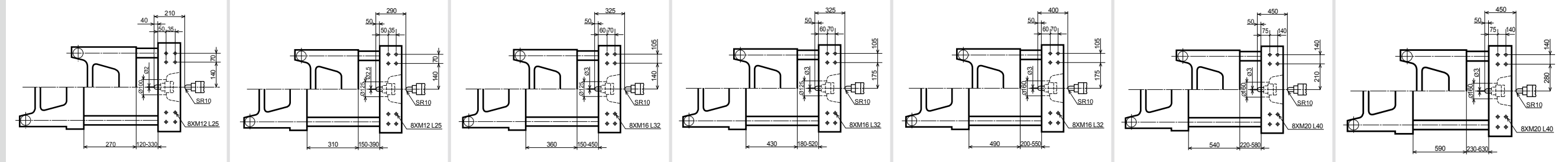
Specification

	MA600 II S/130			MA900 II S/280			MA1200 II S/400			MA1600 II S/570			MA2000 II S/750			MA2500 II S/1000			MA2800 II S/1350			
INJECTION UNIT	A	B		A	B	C	A	B	C	A	B	C	A	B	C	A	B	C	A	B	C	
Screw diameter	mm	24	28	32	36	40	36	40	45	40	45	50	45	50	55	50	55	60	55	60	65	
Screw L/D ratio	L/D	23.3	20	22.5	20	18	23.3	21	18.7	22.5	20	18	22.2	20	18.2	22	20	18.3	21.8	20	18.5	
Shot size (theoretical)	cm ³	50	68	121	153	188	173	214	270	253	320	395	334	412	499	471	570	679	618	735	863	
Injection weight (PS)	g	45	62	110	139	172	157	194	246	230	291	359	304	375	454	429	519	618	562	669	785	
Injection rate (PS)	g/s	60	82	90	114	141	109	135	171	137	174	215	166	205	248	223	270	322	277	329	386	
Injection pressure	MPa	250	184	234	185	150	229	186	147	225	178	144	223	180	149	224	185	155	223	188	160	
Plasticizing rate (PS)	g/s	6.0	8.6	12.5	16.5	20.0	17.8	21.8	28.8	21.2	28.1	35.3	23.9	30.0	36.7	38.1	46.7	55.3	45.9	54.5	60.6	
Screw speed	rpm	0-310			0-285			0-275			0-255			0-200			0-235			0-255		
CLAMPING UNIT																						
Clamp tonnage	kN	600			900			1200			1600			2000			2500			2800		
Toggle stroke	mm	270			310			360			430			490			540			590		
Space between tie bars	mm	310x310			360x360			410x410			470x470			530x530			580x580			630x630		
Max. mold height	mm	330			390			450			520			550			580			630		
Min. mold height	mm	120			150			150			180			200			220			230		
Ejector stroke	mm	70			100			120			140			140			150			150		
Ejector force	kN	22			33			33			33			62			62			62		
OTHERS																						
Pump motor power	kW	11			13			15			18.5			22			30			37		
Heater power	kW	6.3			7.7			11.75			11.75			16.95			17.8			23.4		
Machine dimension (l x w x h)	m	3.76X1.06X1.9			4.28X1.19X1.92			4.82X1.22X1.99			5.33X1.37X2.05			5.8X1.44X2.23			6.25X1.49X2.26			6.74X1.66X2.41		
Machine weight	t	2.5			3.5			4.35			5.65			7.1			8.4			11		
Hopper capacity	kg	25			25			25			25			50			50			50		
Oil tank capacity	l	120			150			170			210			250			340			440		

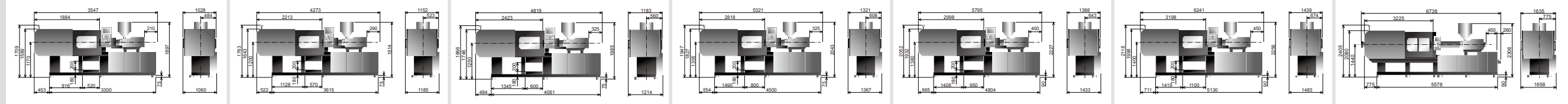
Platen dimensions
Moving platen



Platen dimensions
Mounting hole for robot/sprue picker top view from fixed platen



Machine dimensions

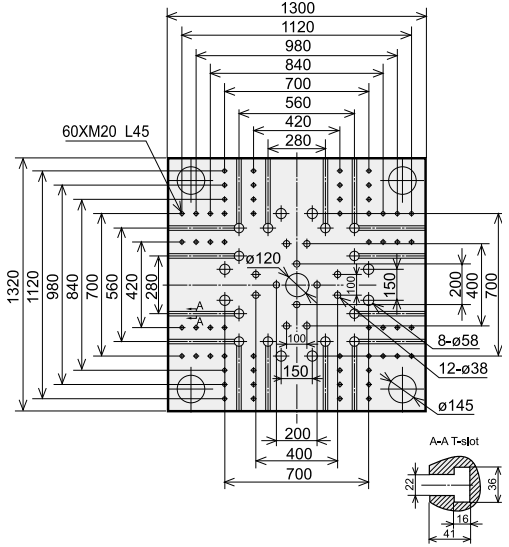
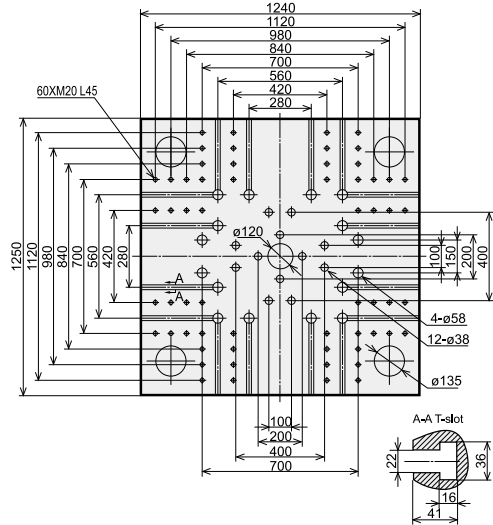
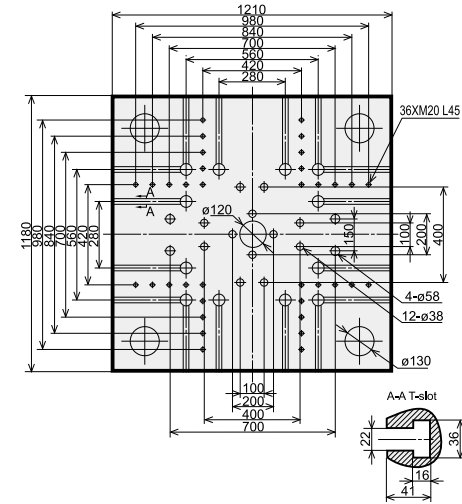
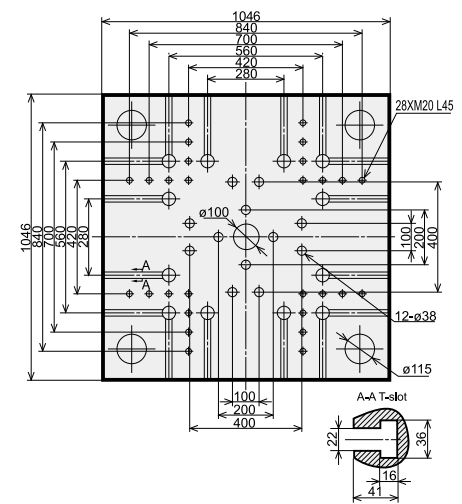
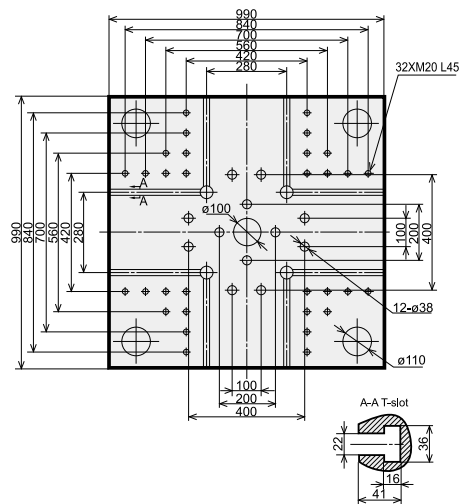


We reserve the right to make changes as a result of further technical advantages.

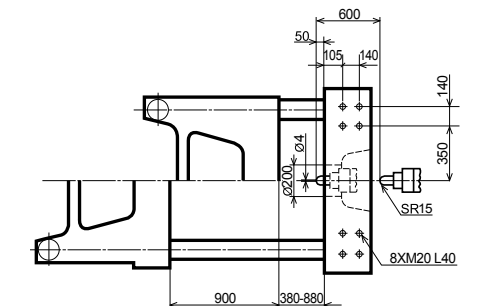
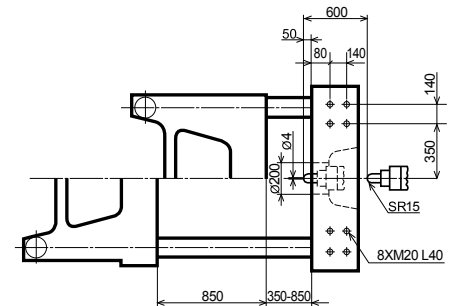
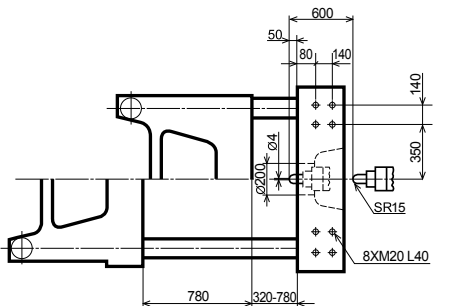
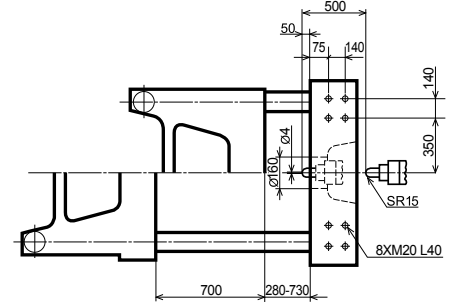
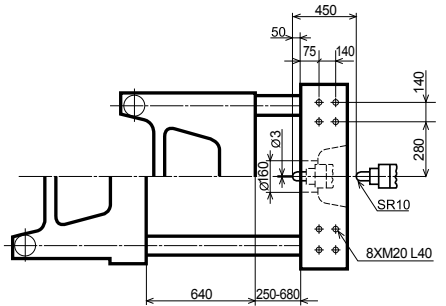
Specification

		MA3200 II S/1700			MA3800 II S/2250				MA4700 II S/3200				MA5300 II S/4500				MA6000 II S/4500			
		A	B	C	A	B	C	D	A	B	C	D	A	B	C	D	A	B	C	D
INJECTION UNIT																				
Screw diameter	mm	60	65	70	65	70	75	80	70	80	85	90	80	85	90	100	80	85	90	100
Screw L/D ratio	L/D	21.7	20	18.6	21.5	20	18.7	17.5	22.9	20	19.1	17.8	22	20.7	19.6	17.6	22	20.7	19.6	17.6
Shot size (theoretical)	cm ³	792	929	1078	1068	1239	1423	1619	1424	1860	2100	2354	2212	2497	2799	3456	2212	2497	2799	3456
Injection weight (PS)	g	720	846	981	972	1128	1295	1473	1296	1692	1911	2142	2013	2272	2547	3145	2013	2272	2547	3145
Injection rate (PS)	g/s	289	339	394	351	407	467	531	395	516	583	653	551	622	698	861	551	622	698	861
Injection pressure	MPa	213	182	157	212	183	159	140	224	172	152	136	197	175	156	126	197	175	156	126
Plasticizing rate (PS)	g/s	51.1	56.7	64.4	58.7	67.3	76	84	67.9	89.5	98.2	111.0	80.3	88.8	101.0	123.4	80.3	88.8	101.0	123.4
Screw speed	rpm	0-225			0-220				0-210				0-180				0-180			
CLAMPING UNIT																				
Clamp tonnage	kN	3200			3800				4700				5300				6000			
Toggle stroke	mm	640			700				780				850				900			
Space between tie bars	mm	680x680			730x730				820x800				840x830				880x880			
Max. mold height	mm	680			730				780				850				880			
Min. mold height	mm	250			280				320				350				380			
Ejector stroke	mm	160			180				200				220				240			
Ejector force	kN	62			110				110				158				158			
OTHERS																				
Pump motor power	kW	37			45				55				65				65			
Heater power	kW	27			33				38.95				47.95				47.95			
Machine dimension (l x w x h)	m	7.18x1.74x2.38			7.47x1.79x2.33				8.07x1.98x3.02				8.92x2.05x3.44				9.11x2.08x3.44			
Machine weight	t	13.2			14.7				18.5				26				29			
Hopper capacity	kg	50			50				50				100				100			
Oil tank capacity	l	500			540				640				800				800			

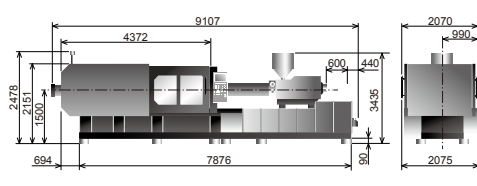
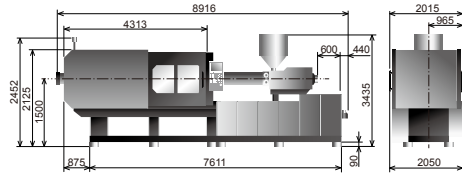
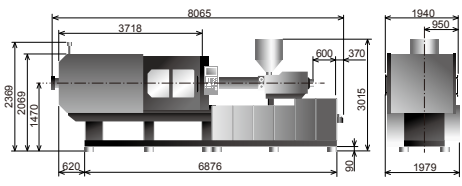
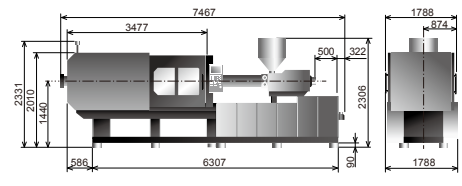
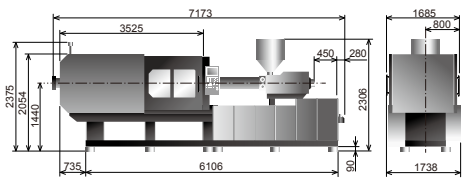
Platen dimensions
Moving platen



Platen dimensions
Mounting hole for robot/sprue picker top view from fixed platen



Machine dimensions

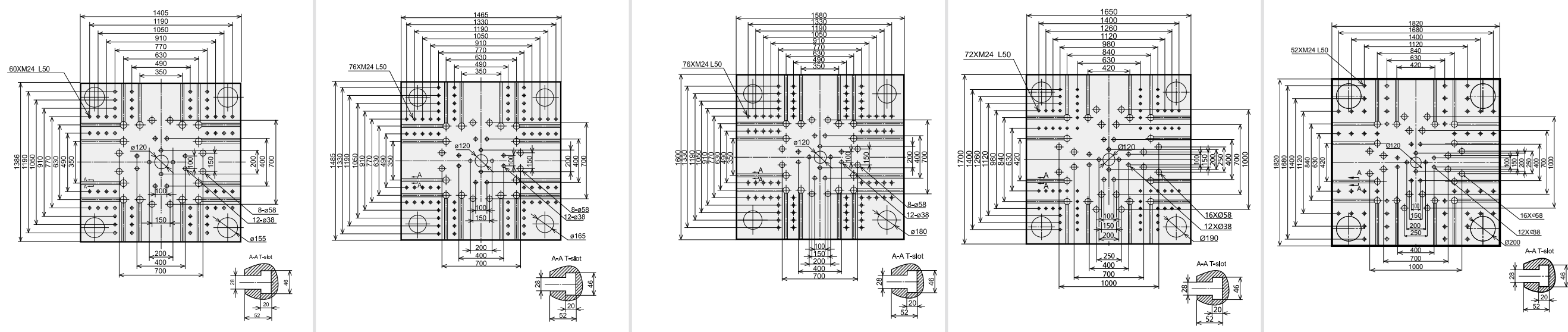


We reserve the right to make changes as a result of further technical advantages.

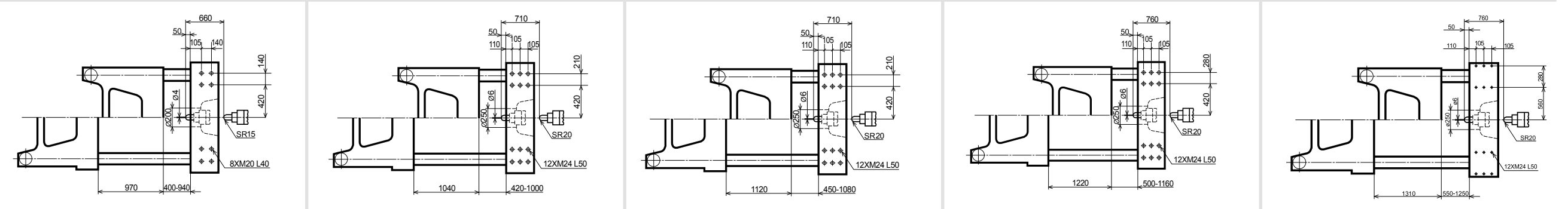
Specification

	MA7000 II S/5000				MA8000 II S/6800				MA9000 II S/6800				MA10000 II S/8400				MA12000 II S/8400				
	A	B	C	D	A	B	C	D	A	B	C	D	A	B	C	D	A	B	C	D	
INJECTION UNIT																					
Screw diameter	mm	80	90	100	110	90	100	110	120	90	100	110	120	100	110	120	130	100	110	120	130
Screw L/D ratio	L/D	24.8	22	19.8	18	24.4	22	20	18.3	24.4	22	20	18.3	24.2	22	20.2	18.6	24.2	22	20.2	18.6
Shot size (theoretical)	cm ³	2262	2863	3534	4276	2990	3691	4467	5316	2990	3691	4467	5316	4006	4847	5768	6769	4006	4847	5768	6769
Injection weight (PS)	g	2058	2605	3216	3892	2721	3359	4065	4837	2721	3359	4065	4837	3645	4410	5249	6160	3645	4410	5249	6160
Injection rate (PS)	g/s	492	623	769	930	573	707	855	1018	573	707	855	1018	705	853	1015	1191	705	853	1015	1191
Injection pressure	MPa	226	179	145	120	219	178	147	123	219	178	147	123	213	176	148	126	213	176	148	126
Plasticizing rate (PS)	g/s	73.8	92.6	114	134	88.8	109	129	151	88.8	109	129	151	100	120	139	160	100	120	139	160
Screw speed	rpm	0-151				0-134				0-134				0-115				0-115			
CLAMPING UNIT																					
Clamp tonnage	kN	7000				8000				9000				10000				12000			
Toggle stroke	mm	970				1040				1120				1220				1310			
Space between tie bars	mm	960×940				1000×1000				1080×1080				1160×1160				1250×1250			
Max. mold height	mm	940				1000				1080				1160				1250			
Min. mold height	mm	400				420				450				500				550			
Ejector stroke	mm	260				280				300				320				320			
Ejector force	kN	186				186				186				215				215			
OTHERS																					
Pump motor power	kW	22+45				22+55				22+55				37+55				37+55			
Heater power	kW	54.25				70.6				70.6				82.8				82.8			
Machine dimension (l x w x h)	m	10.45X2.27X3.46				10.77X2.33X3.52				11.19X2.44X3.52				11.89X2.51X3.57				12.19X2.63X3.67			
Machine weight	t	32				38				45				51				61			
Hopper capacity	kg	100				100				100				100				100			
Oil tank capacity	l	880				1000				1000				1150				1150			

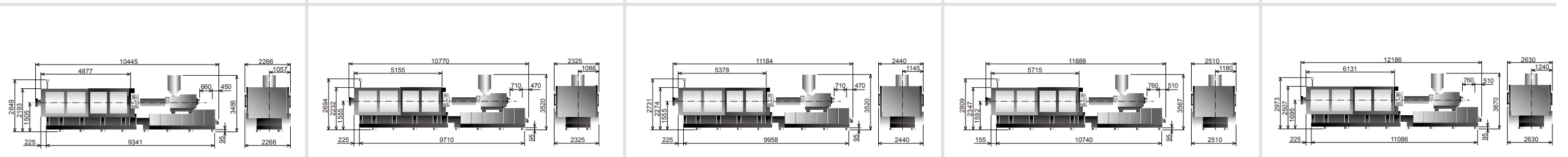
Platen dimensions
Moving platen



Platen dimensions
Mounting hole for robot/sprue picker
view from fixed platen



Machine dimensions



We reserve the right to make changes as a result of further technical advantages.