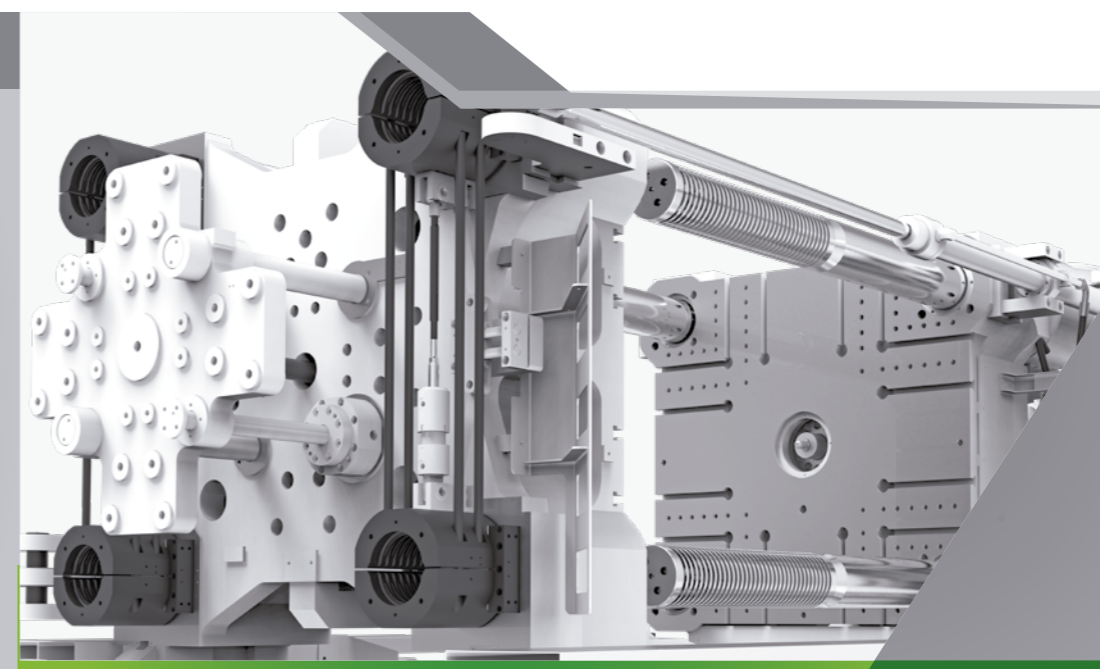


HAITIAN PLASTICS MACHINERY GROUP CO., LTD
 No. 1688 Haitian Road, Xiaogang, Beilun, Ningbo, P. R. China.
 + 86-574-8617 7005 (China)
 + 86-574-8617 7242 (International)
 haitian@mail.haitian.com
 www.haitianpm.com

NINGBO HAITIAN HUAYUAN MACHINERY CO.,LTD.
 Export Processing Zone, Ningbo 315800 China
 +86-574-8617 7242
 +86-574-8622 1864
 haitian@mail.haitian.com
 www.haitianpm.com



SPECIFICATIONS

GLOBAL



HAITIAN JUPITER III SERIES

Servo hydraulic two-platen solution

12.000 - 40.000 kN

JU 20181217-IV



WE CREATE ADVANTAGE.
 A MEMBER OF HAITIAN INTERNATIONAL

Combination Possibilities

12.000 - 40.000 kN

MACHINE TYPE	CLAMPING UNIT		INJECTION UNIT														
	1730	2230	3430	4630	5330	6730	8930	11300	17300	22300	32300	40300	50300	62300	93300	106300	
JU4500III																	
JU5500III																	
JU6500III																	
JU7500III																	
JU9000III																	
JU10800III																	
JU12000III																	
JU13000III																	
JU14000III																	
JU16000III																	
JU18500III																	
JU21000III																	
JU24000III																	
JU28000III																	
JU33000III																	
JU40000III																	

Standard range
 Combination possibilities

SPECIFICATION JU12000III

SPECIFICATIONS
INJECTION UNIT

		5330				6730				JU12000III 8930				11300					
CLAMPING UNIT																		CLAMPING UNIT	
Clamping force	kN																	kN	Clamping force
Space between tie bars	mm																	mm	Space between tie bars
Max. mold height	mm																	mm	Max. mold height
Min. mold height	mm																	mm	Min. mold height
Ejector stroke	mm																	mm	Ejector stroke
Ejector force	kN																	kN	Ejector force
Max. daylight	mm																	mm	Max. daylight
Mold opening stroke ①	mm																	mm	Mold opening stroke ①
Max. mold weight ②	t																	t	Max. mold weight ②
INJECTION UNIT		A	B	C	D	A	B	C	D	A	B	C	D	A	B	C	D	INJECTION UNIT	
Screw diameter	mm	80	90	100	110	90	100	110	120	100	110	120	130	110	120	130	140	mm	Screw diameter
Screw L /D ratio	L/D	24.8	22	19.8	18	24.4	22	20	18.3	24.2	22	20.2	18.6	26.2	24	22.2	20.6	L/D	Screw L /D ratio
Shot size (theoretical)	cm ³	2262	2863	3534	4276	2990	3691	4467	5316	4006	4847	5768	6769	5227	6220	7300	8467	cm ³	Shot size (theoretical)
Injection weight (PS)	g	2058	2605	3216	3892	2721	3359	4065	4837	3645	4410	5249	6160	4756	5661	6643	7705	g	Injection weight (PS)
Injection rate	g/s	608	770	951	1150	642	793	960	1142	762	922	1097	1288	924	1100	1291	1497	g/s	Injection rate
Injection pressure	MPa	204	161	131	108	193	157	129	109	196	162	136	116	190	159	136	117	MPa	Injection pressure
Injection pressure(max)	MPa	236	187	151	125	222	180	149	125	223	184	155	132	218	183	156	135	MPa	Injection pressure(max)
Plasticizing capacity (GPPS) ③	g/s	80.6	101	125	146	89.5	110	130	152	101	121	140	161	123	142	164	187	g/s	Plasticizing capacity (GPPS) ③
Plasticizing capacity (HDPE) ④	g/s	119	151	186	219	132	162	193	224	147	177	201	231	187	217	210	241	g/s	Plasticizing capacity (HDPE) ④
Screw speed	rpm	165				135				116				105				rpm	Screw speed
OTHERS																		OTHERS	
Max. pump pressure	MPa	25				25				25				25				MPa	Max. pump pressure
Pump motor power	kW	55+30				55+30				75+37				75+55				kW	Pump motor power
Heating power	kW	54				71				83				104				kW	Heating power
Machine dimensions (L x W x H)	m	9.69x3.37x2.89				9.80x3.37x2.90				10.14x3.37x3.63				10.93x3.37x4.24				m	Machine dimensions (L x W x H)
Machine weight	t	54				57				59				63				t	Machine weight
Hopper capacity	kg	100				100				200				400				kg	Hopper capacity
Oil tank capacity	l	730				780				960				1250				l	Oil tank capacity

NOTE:

① with min. mold height / with max. mold height

② moving platen: 2/3 of max. mold weight

③ Plasticizing capacity (GPPS): note: GB standard, with application of GPPS plasticizing capacity of 3-zone screws

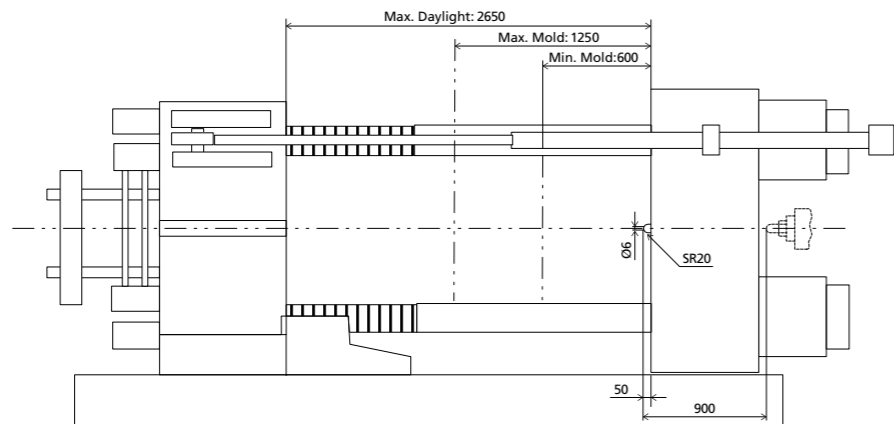
④ Plasticizing capacity (HDPE): note: Euromap 19, with application of HDPE plasticizing capacity of barrier screws

The above plasticizing capacity is for reference only.

We reserve the right to make changes as a result of further technical advantages.

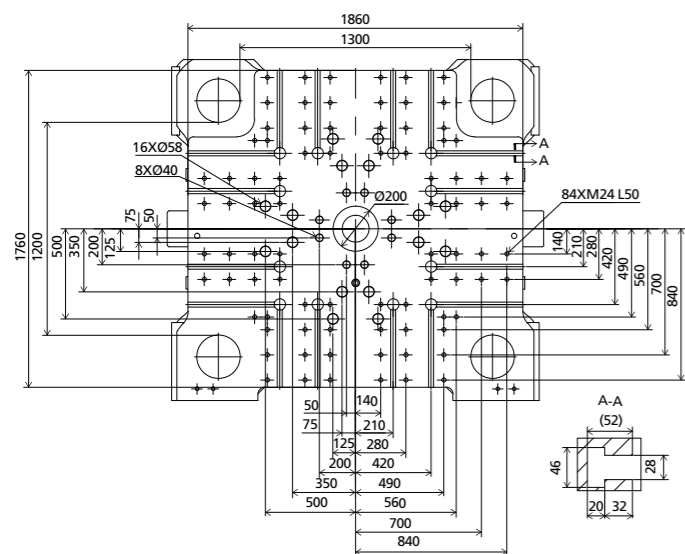
DIMENSIONS JU12000III

Clamping Unit



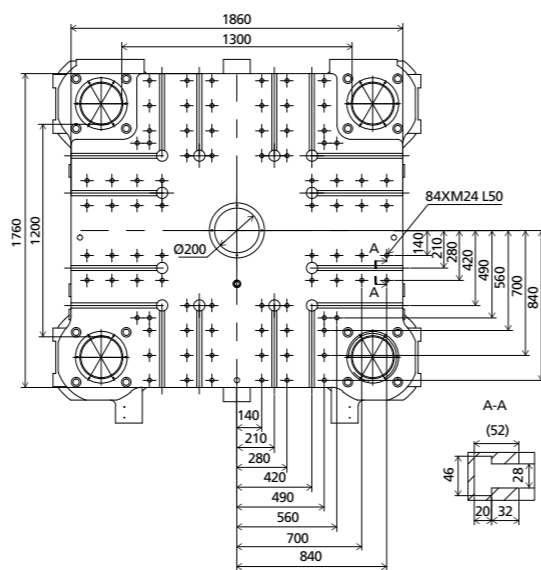
Platen dimensions

Moving platen



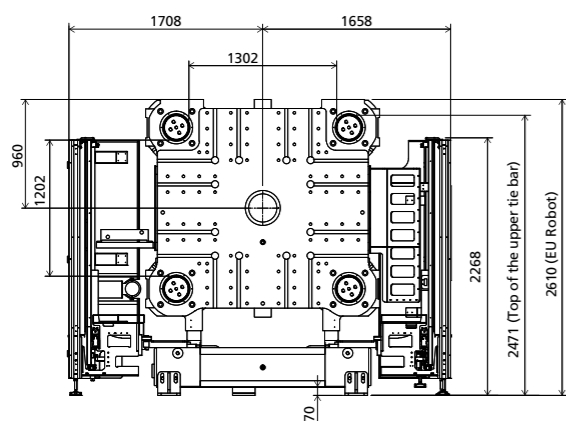
Platen dimensions

Fixed platen



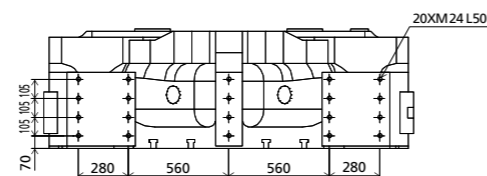
Robot

Mechanical interface

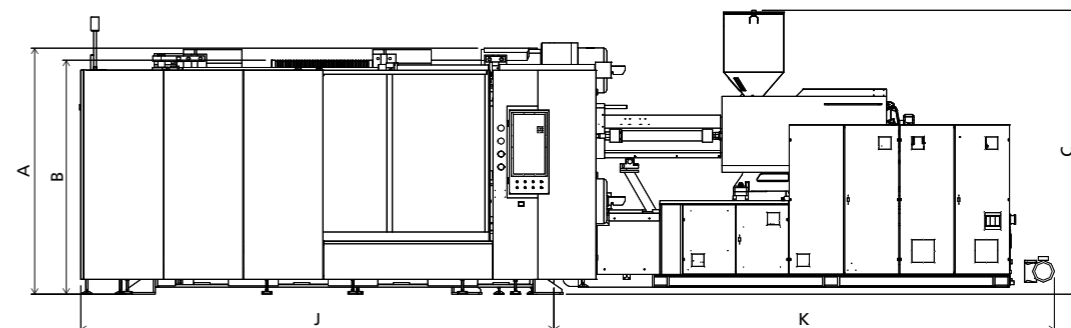


Robot

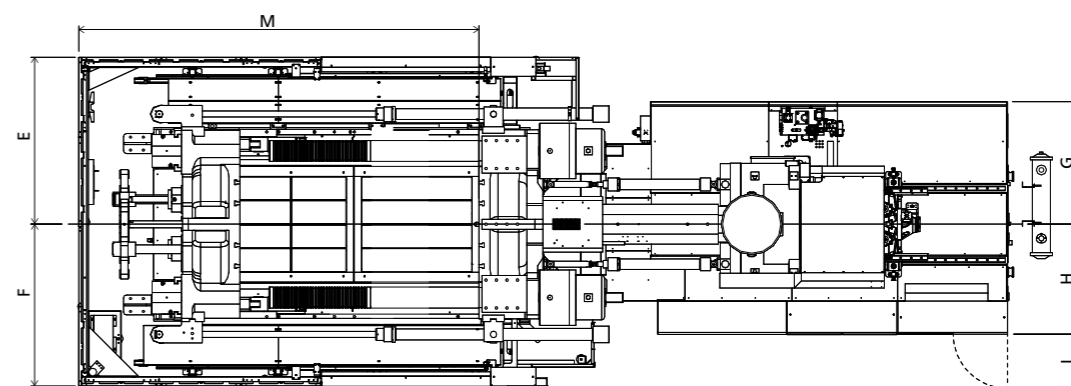
Top view fixed platen



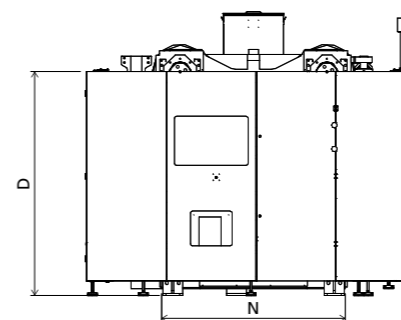
Front view



Top view



Side view



■ Standard

	A	B	C	D	E	F	G	H	I	J	K	M	N
5330	2610	2471	2885	2250	1708	1658	1203	1027	544	5102	4586	4307	1870
6730	2610	2471	2900	2250	1708	1658	1198	1042	544	5102	4689	4307	1870
8930	2610	2471	2910	2250	1708	1658	1228	1102	544	5102	4913	4307	1870
11300	2610	2471	4240	2250	1708	1658	1318	1212	544	5102	5821	4307	1870

INJECTION UNIT
DIMENSIONS (mm)

We reserve the right to make changes as a result of further technical advantages.

SPECIFICATION JU13000III

SPECIFICATIONS
INJECTION UNIT

	6730	8930	JU13000III				17300										
			11300	13000	1420x1170	1350	17300										
CLAMPING UNIT																	
Clamping force	kN			13000				kN									
Space between tie bars	mm			1420x1170				mm									
Max. mold height	mm			1350				mm									
Min. mold height	mm			600				mm									
Ejector stroke	mm			350				mm									
Ejector force	kN			230				kN									
Max. daylight	mm			2850				mm									
Mold opening stroke ①	mm			2250/1500				mm									
Max. mold weight ②	t			23				t									
INJECTION UNIT																	
		A	B	C	D	A	B	C	D	A	B	C					
Screw diameter	mm	90	100	110	120	100	110	120	130	110	120	130	140	130	140	150	mm
Screw L /D ratio	L/D	24.4	22	20	18.3	24.2	22	20.2	18.6	26.2	24	22.2	20.6	24	22.3	20.8	L/D
Shot size (theoretical)	cm ³	2990	3691	4467	5316	4006	4847	5768	6769	5227	6220	7300	8467	8362	9698	11133	cm ³
Injection weight (PS)	g	2721	3359	4065	4837	3645	4410	5249	6160	4756	5661	6643	7705	7610	8825	10131	g
Injection rate	g/s	774	955	1156	1376	762	922	1097	1288	924	1100	1291	1497	1236	1433	1646	g/s
Injection pressure	MPa	193	157	129	109	196	162	136	116	190	159	136	117	186	160	140	MPa
Injection pressure(max)	MPa	222	180	149	125	223	184	155	132	218	183	156	135	211	182	158	MPa
Plasticizing capacity (GPPS) ③	g/s	99.4	122	144	169	101	121	140	161	123	142	164	187	168	192	220	g/s
Plasticizing capacity (HDPE) ④	g/s	147	180	214	250	147	177	201	231	187	217	210	241	252	283	336	g/s
Screw speed	rpm		150				116				105				102		rpm
OTHERS																	
Max. pump pressure	MPa		25				25				25				25		MPa
Pump motor power	kW		75+37				75+37				75+55				75+37+55		kW
Heating power	kW		71				83				104				116		kW
Machine dimensions (L x W x H)	m		10.10x3.53x3.00				10.43x3.53x3.73				11.23x3.53x4.34				11.53x3.53x4.62		m
Machine weight	t		61				63				65				73		t
Hopper capacity	kg		100				200				400				400		kg
Oil tank capacity	l		780				960				1250				1550		l

NOTE:

① with min. mold height / with max. mold height

② moving platen: 2/3 of max. mold weight

③ Plasticizing capacity (GPPS): note: GB standard, with application of GPPS plasticizing capacity of 3-zone screws

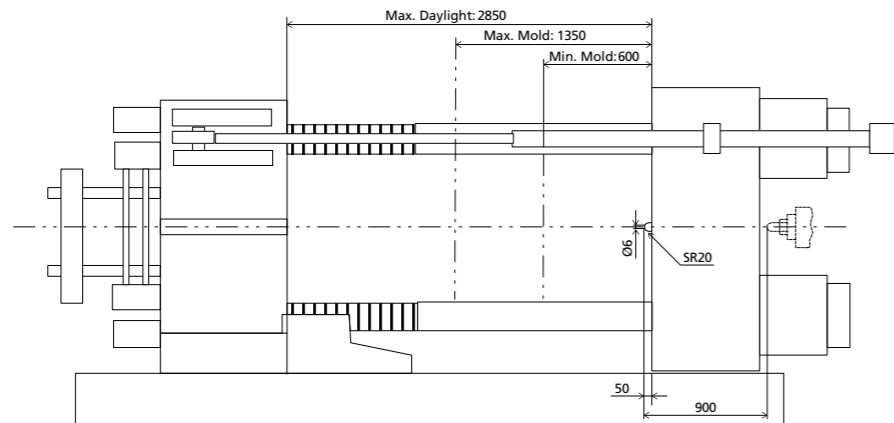
④ Plasticizing capacity (HDPE): note: Euromap 19, with application of HDPE plasticizing capacity of barrier screws

The above plasticizing capacity is for reference only.

We reserve the right to make changes as a result of further technical advantages.

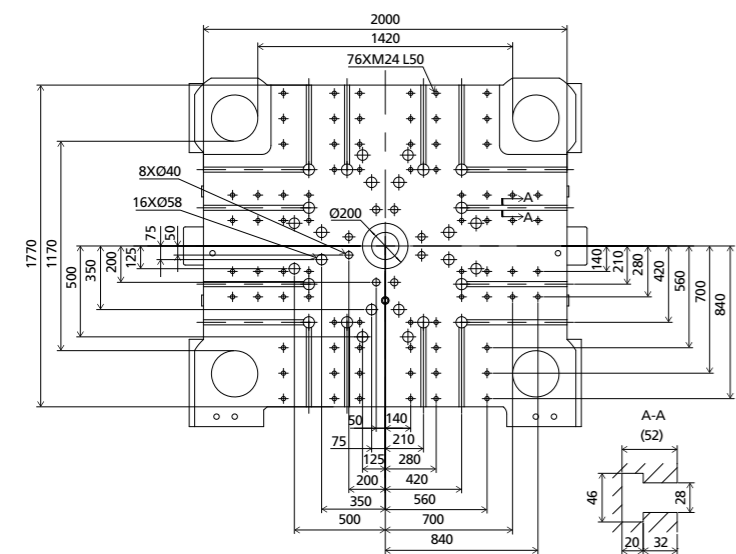
DIMENSIONS JU13000III

Clamping Unit



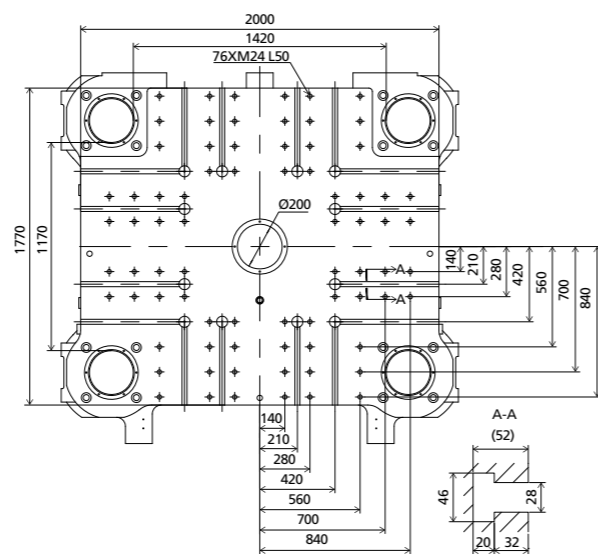
Platen dimensions

Moving platen



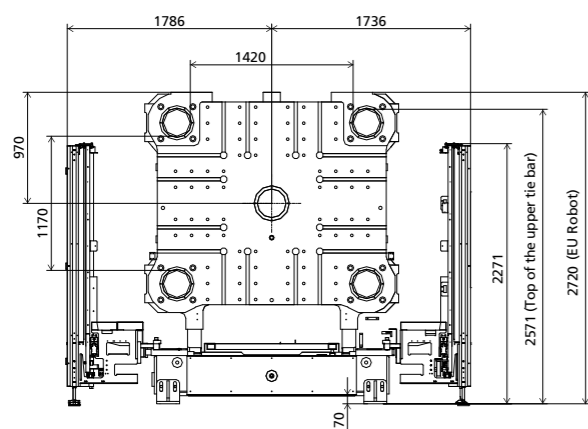
Platen dimensions

Fixed platen



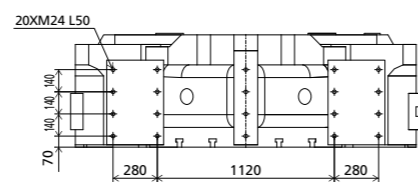
Robot

Mechanical interface

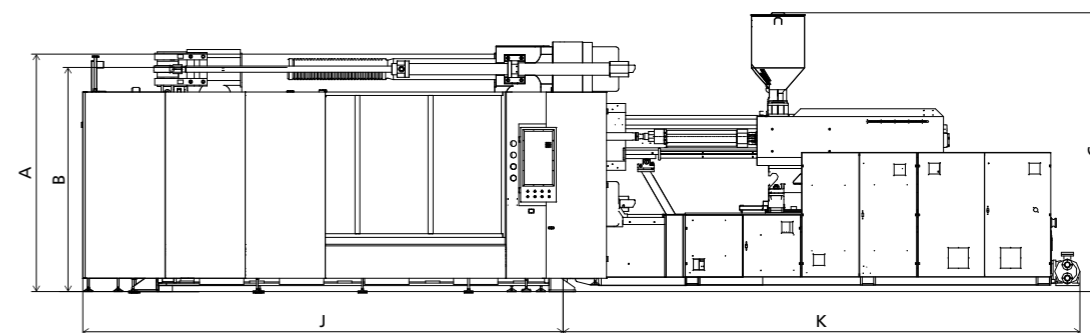


Robot

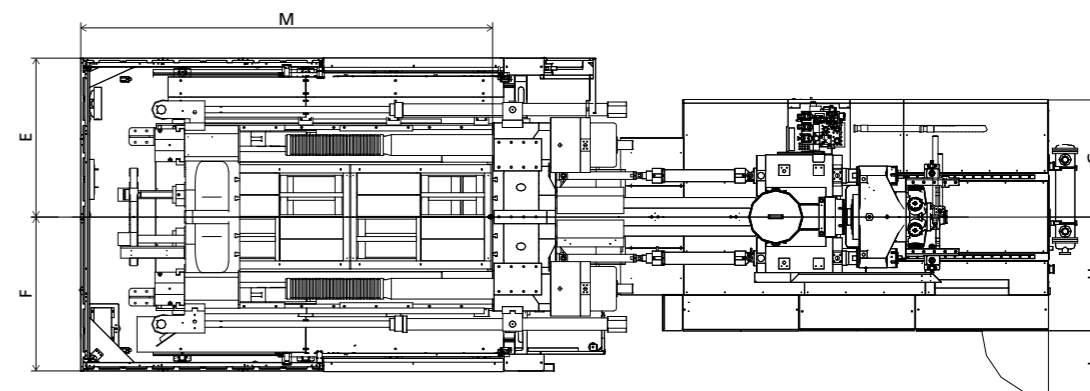
Top view fixed platen



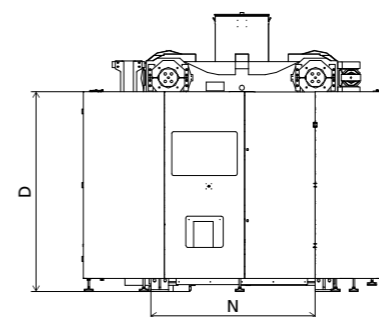
Front view



Top view



Side view



Standard

	A	B	C	D	E	F	G	H	I	J	K	M	N
6730	2675	2526	3000	2250	1786	1736	1198	1112	544	5409	4689	4639	2050
8930	2675	2526	3725	2250	1786	1736	1228	1172	544	5409	5021	4639	2050
11300	2675	2526	4340	2250	1786	1736	1318	1282	745	5409	5821	4639	2050
17300	2675	2526	4620	2250	1786	1736	1855	1305	850	5409	6114	4639	2050

INJECTION UNIT
DIMENSIONS (mm)

We reserve the right to make changes as a result of further technical advantages.

SPECIFICATION JU14000III

SPECIFICATIONS
INJECTION UNIT

	6730	8930	JU14000III				17300			
			11300							
CLAMPING UNIT										
Clamping force	kN		14000				kN			
Space between tie bars	mm		1460×1360				mm			
Max. mold height	mm		1450				mm			
Min. mold height	mm		700				mm			
Ejector stroke	mm		400				mm			
Ejector force	kN		330				kN			
Max. daylight	mm		3050				mm			
Mold opening stroke ①	mm		2350/1600				mm			
Max. mold weight ②	t		27				t			
INJECTION UNIT										
		A	B	C	D	A	B	C	D	
Screw diameter	mm	90	100	110	120	100	110	120	130	mm
Screw L /D ratio	L/D	24.4	22	20	18.3	24.2	22	20.2	18.6	L/D
Shot size (theoretical)	cm ³	2990	3691	4467	5316	4006	4847	5768	6769	cm ³
Injection weight (PS)	g	2721	3359	4065	4837	3645	4410	5249	6160	g
Injection rate	g/s	774	955	1156	1376	762	922	1097	1288	g/s
Injection pressure	MPa	193	157	129	109	196	162	136	116	MPa
Injection pressure(max)	MPa	222	180	149	125	223	184	155	132	MPa
Plasticizing capacity (GPPS) ③	g/s	99.4	122	144	169	101	121	140	161	g/s
Plasticizing capacity (HDPE) ④	g/s	147	180	214	250	147	177	201	231	g/s
Screw speed	rpm		150				116			rpm
OTHERS										
Max. pump pressure	MPa		25				25			MPa
Pump motor power	kW		75+37				75+37			kW
Heating power	kW		71				83			kW
Machine dimensions (L x W x H)	m		10.61×3.60×3.08				10.93×3.60×3.81			m
Machine weight	t		70				72			t
Hopper capacity	kg		100				200			kg
Oil tank capacity	l		780				960			l

NOTE:

① with min. mold height / with max. mold height

② moving platen: 2/3 of max. mold weight

③ Plasticizing capacity (GPPS): note: GB standard, with application of GPPS plasticizing capacity of 3-zone screws

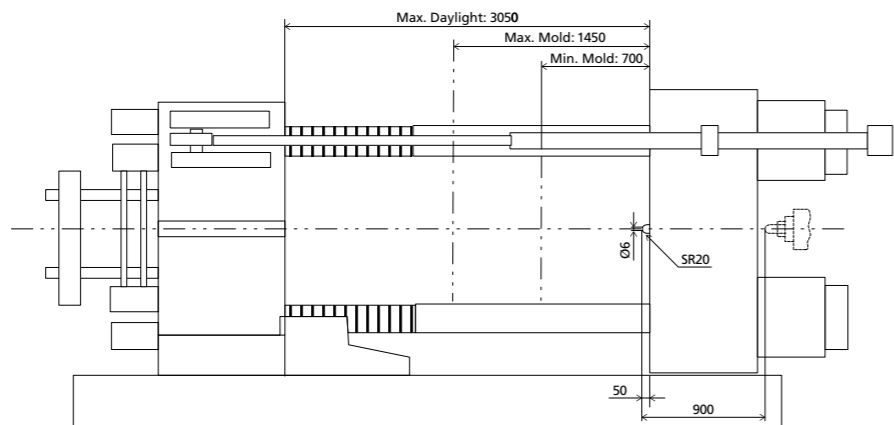
④ Plasticizing capacity (HDPE): note: Euromap 19, with application of HDPE plasticizing capacity of barrier screws

The above plasticizing capacity is for reference only.

We reserve the right to make changes as a result of further technical advantages.

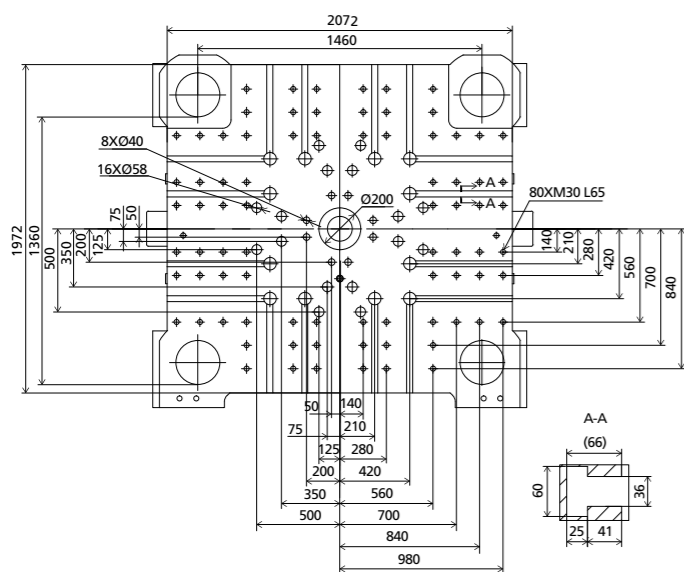
DIMENSIONS JU14000III

Clamping Unit



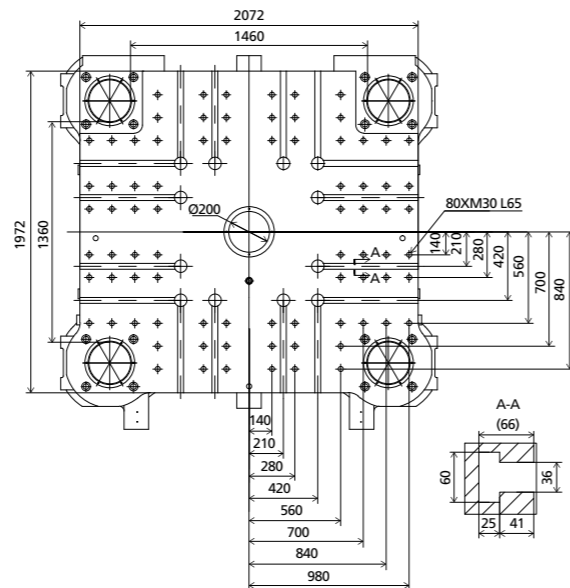
Platen dimensions

Moving platen



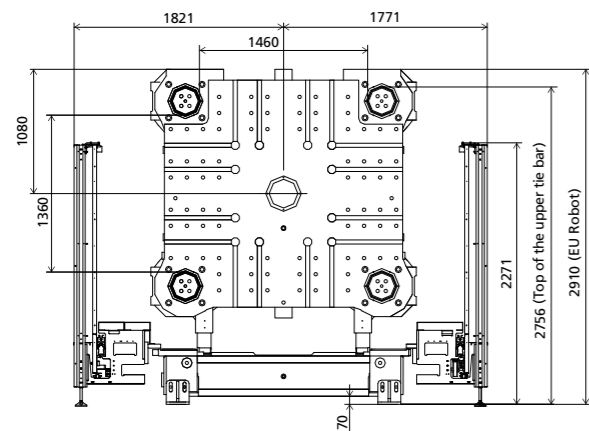
Platen dimensions

Fixed platen



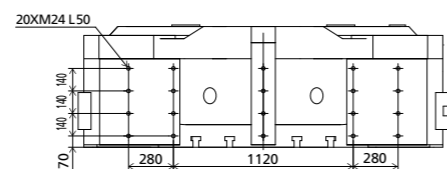
Robot

Mechanical interface

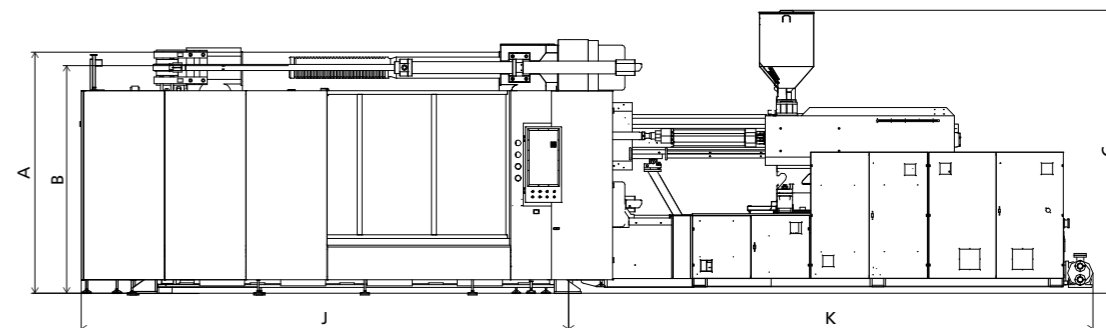


Robot

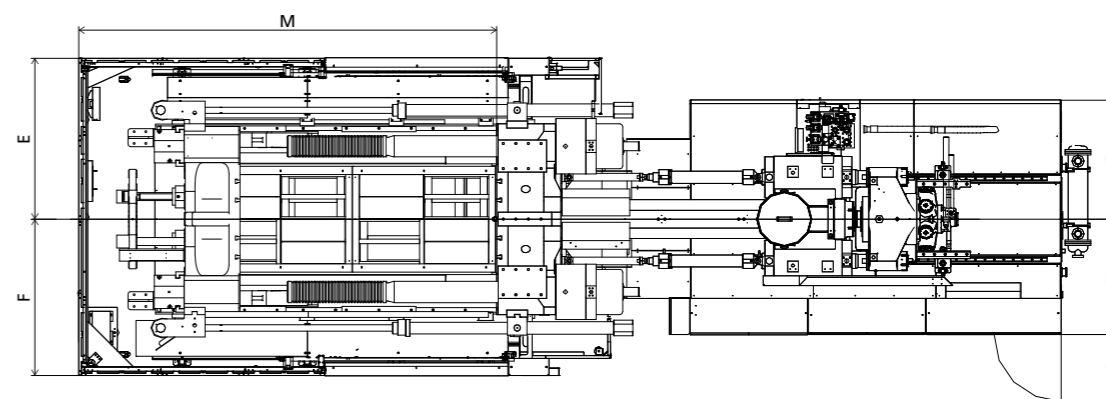
Top view fixed platen



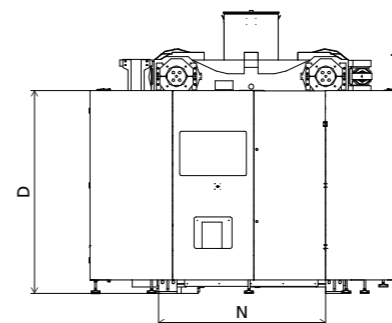
Front view



Top view



Side view



Standard

	A	B	C	D	E	F	G	H	I	J	K	M	N
6730	2910	2756	3080	2253	1821	1771	1198	1112	544	5776	4689	4951	2040
8930	2910	2756	3805	2253	1821	1771	1228	1172	544	5776	5021	4951	2040
11300	2910	2756	4420	2253	1821	1771	1318	1282	745	5776	5821	4951	2040
17300	2910	2756	4700	2253	1821	1771	1855	1305	850	5776	6114	4951	2040

INJECTION UNIT
DIMENSIONS (mm)

We reserve the right to make changes as a result of further technical advantages.

SPECIFICATION JU16000III

SPECIFICATIONS
INJECTION UNIT

	8930	11300	JU16000III			17300	
CLAMPING UNIT							
Clamping force	kN				16000	kN	Clamping force
Space between tie bars	mm				1570x1285	mm	Space between tie bars
Max. mold height	mm				1550	mm	Max. mold height
Min. mold height	mm				700	mm	Min. mold height
Ejector stroke	mm				400	mm	Ejector stroke
Ejector force	kN				330	kN	Ejector force
Max. daylight	mm				3250	mm	Max. daylight
Mold opening stroke ①	mm				2550/1700	mm	Mold opening stroke ①
Max. mold weight ②	t				33	t	Max. mold weight ②
INJECTION UNIT							
Screw diameter	mm	A 100 B 110 C 120 D 130	A 110 B 120 C 130 D 140	A 130 B 140 C 150		mm	Screw diameter
Screw L /D ratio	L/D	24.2 22 20.2 18.6	26.2 24 22.2 20.6	24 22.3 20.8		L/D	Screw L /D ratio
Shot size (theoretical)	cm ³	4006 4847 5768 6769	5227 6220 7300 8467	8362 9698 11133		cm ³	Shot size (theoretical)
Injection weight (PS)	g	3645 4410 5249 6160	4756 5661 6643 7705	7610 8825 10131		g	Injection weight (PS)
Injection rate	g/s	894 1081 1287 1511	924 1100 1291 1497	1236 1433 1646		g/s	Injection rate
Injection pressure	MPa	196 162 136 116	190 159 136 117	186 160 140		MPa	Injection pressure
Injection pressure (max)	MPa	223 184 155 132	218 183 156 135	211 182 158		MPa	Injection pressure (max)
Plasticizing capacity (GPPS) ③	g/s	110 133 154 177	123 142 164 187	168 192 220		g/s	Plasticizing capacity (GPPS) ③
Plasticizing capacity (HDPE) ④	g/s	161 193 220 253	187 217 210 241	252 283 336		g/s	Plasticizing capacity (HDPE) ④
Screw speed	rpm	127	105	102		rpm	Screw speed
OTHERS							
Max. pump pressure	MPa	25	25	25		MPa	Max. pump pressure
Pump motor power	kW	75+55	75+55	75+37+55		kW	Pump motor power
Heating power	kW	83	104	116		kW	Heating power
Machine dimensions (L x W x H)	m	11.13x3.77x3.78	11.80x3.77x4.40	12.38x3.77x4.68		m	Machine dimensions (L x W x H)
Machine weight	t	77	81	88		t	Machine weight
Hopper capacity	kg	200	400	400		kg	Hopper capacity
Oil tank capacity	l	960	1250	1550		l	Oil tank capacity

NOTE:

① with min. mold height / with max. mold height

② moving platen: 2/3 of max. mold weight

③ Plasticizing capacity (GPPS): note: GB standard, with application of GPPS plasticizing capacity of 3-zone screws

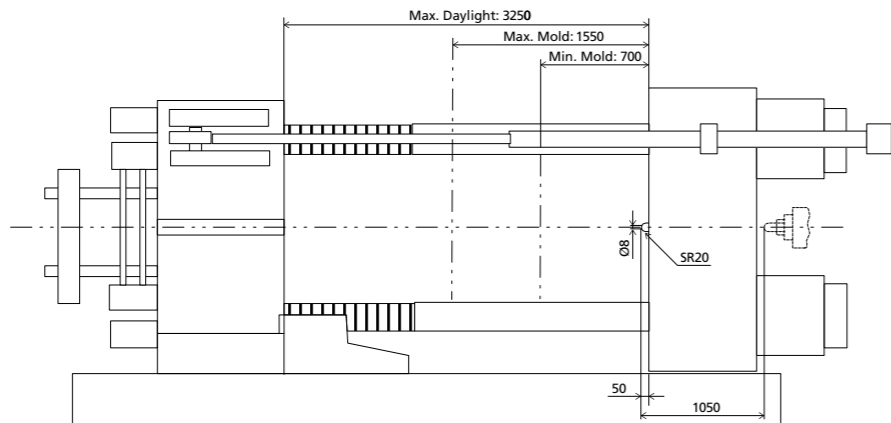
④ Plasticizing capacity (HDPE): note: Euromap 19, with application of HDPE plasticizing capacity of barrier screws

The above plasticizing capacity is for reference only.

We reserve the right to make changes as a result of further technical advantages.

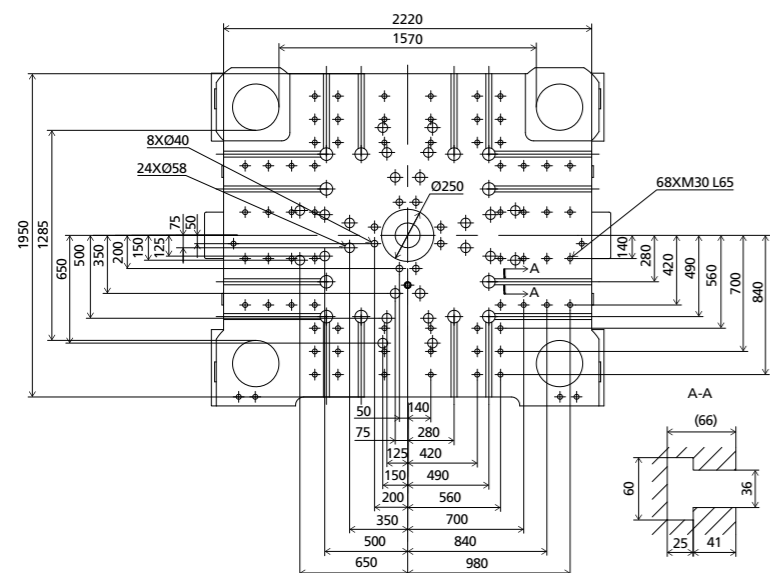
DIMENSIONS JU16000III

Clamping Unit



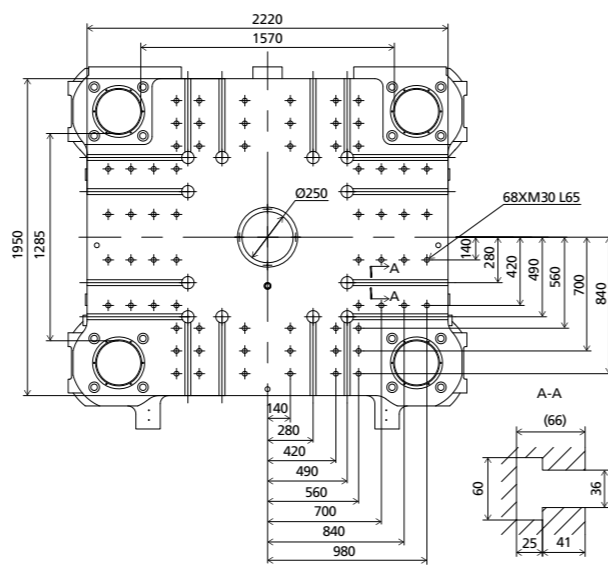
Platen dimensions

Moving platen



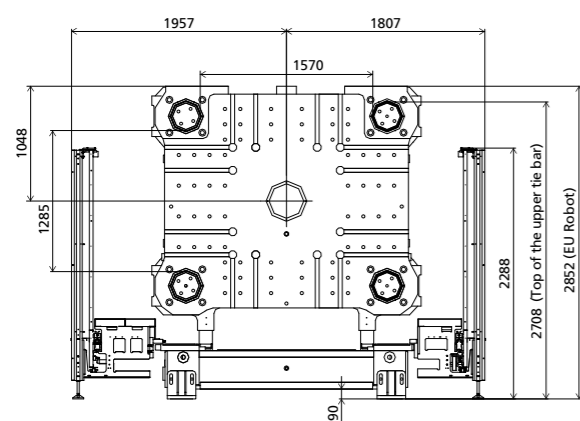
Platen dimensions

Fixed platen



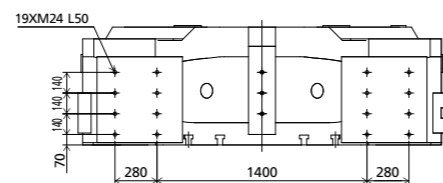
Robot

Mechanical interface

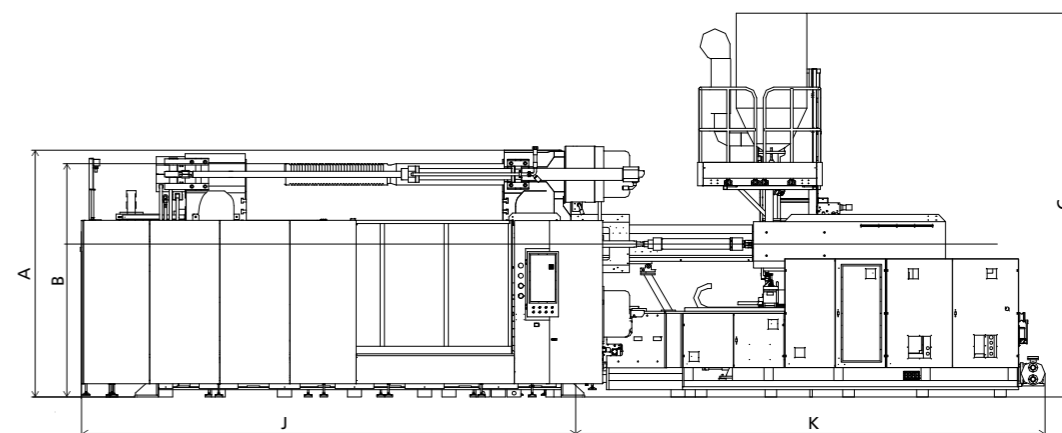


Robot

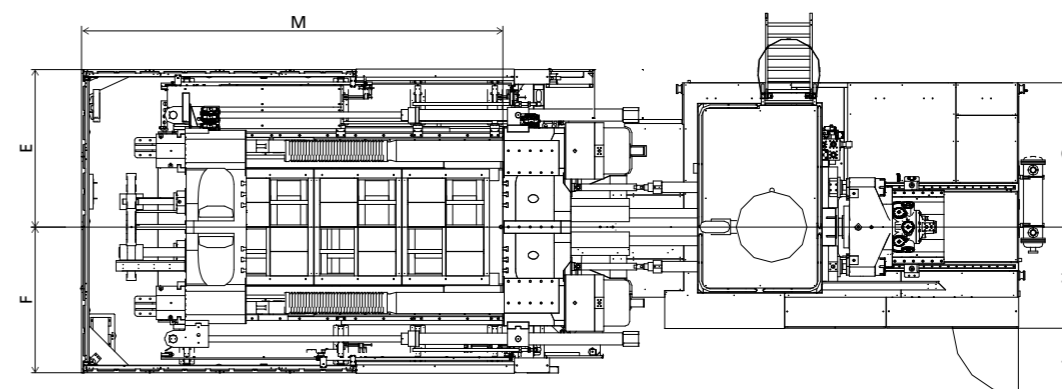
Top view fixed platen



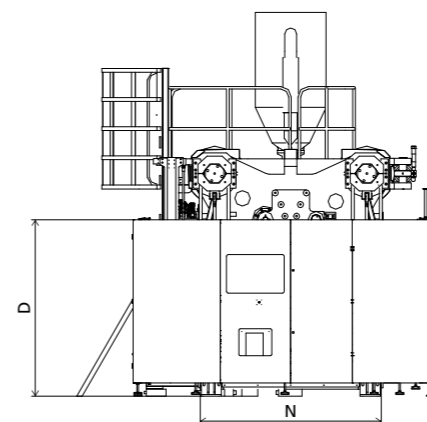
Front view



Top view



Side view



■ Standard

	A	B	C	D	E	F	G	H	I	J	K	M	N
8930	2852	2708	3780	2270	1957	1807	1228	1102	675	5976	5021	5121	2170
11300	2852	2708	4395	2270	1957	1807	1318	1282	745	5976	5821	5121	2170
17300	2852	2708	4675	2270	1957	1807	1855	1305	850	5976	6051	5121	2170

INJECTION UNIT
DIMENSIONS (mm)

We reserve the right to make changes as a result of further technical advantages.

SPECIFICATION JU18500III

SPECIFICATIONS
INJECTION UNIT

	11300	JU18500III				17300	22300	32300		
CLAMPING UNIT										
Clamping force	kN				18500				kN	
Space between tie bars	mm				1870×1425				mm	
Max. mold height	mm				1600				mm	
Min. mold height	mm				750				mm	
Ejector stroke	mm				450				mm	
Ejector force	kN				450				kN	
Max. daylight	mm				3350				mm	
Mold opening stroke ①	mm				2600/1750				mm	
Max. mold weight ②	t				40				t	
INJECTION UNIT										
		A	B	C	D	A	B	C	A	B
Screw diameter	mm	110	120	130	140	130	140	150	140	150
Screw L /D ratio	L/D	26.2	24	22.2	20.6	24	22.3	20.8	24	22.4
Shot size (theoretical)	cm ³	5227	6220	7300	8467	8362	9698	11133	10468	12017
Injection weight (PS)	g	4756	5661	6643	7705	7610	8825	10131	9526	10935
Injection rate	g/s	924	1100	1291	1497	1236	1433	1646	1379	1583
Injection pressure	MPa	190	159	136	117	186	160	140	185	161
Injection pressure(max)	MPa	218	183	156	135	211	182	158	211	184
Plasticizing capacity (GPPS) ③	g/s	123	142	164	187	168	192	220	155	176
Plasticizing capacity (HDPE) ④	g/s	187	217	210	241	252	283	336	243	294
Screw speed	rpm		105				102			85
										72
OTHERS										
Max. pump pressure	MPa		25				25			25
Pump motor power	kW		75+55				75+37+55			75+55+55
Heating power	kW		104				116			133
Machine dimensions (L x W x H)	m		12.13×4.15×4.60				12.51×4.15×4.88			12.75×4.15×4.86
Machine weight	t		102				109			116
Hopper capacity	kg		400				400			400
Oil tank capacity	l		1250				1550			1720

NOTE:

① with min. mold height / with max. mold height

② moving platen: 2/3 of max. mold weight

③ Plasticizing capacity (GPPS): note: GB standard, with application of GPPS plasticizing capacity of 3-zone screws

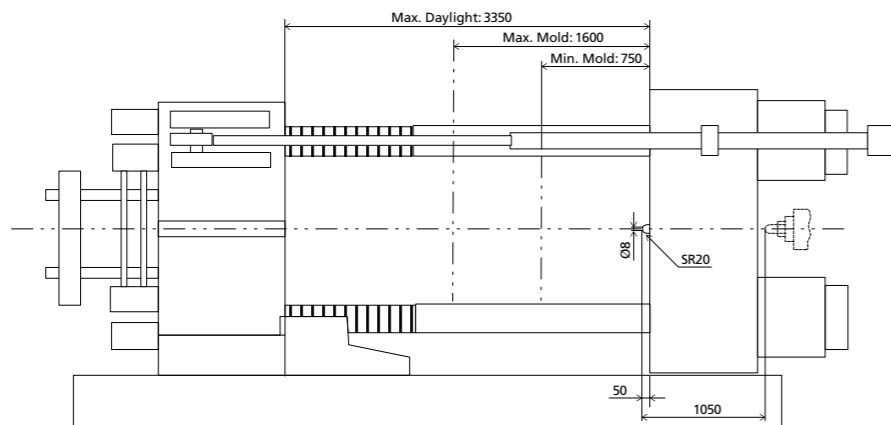
④ Plasticizing capacity (HDPE): note: Euromap 19, with application of HDPE plasticizing capacity of barrier screws

The above plasticizing capacity is for reference only.

We reserve the right to make changes as a result of further technical advantages.

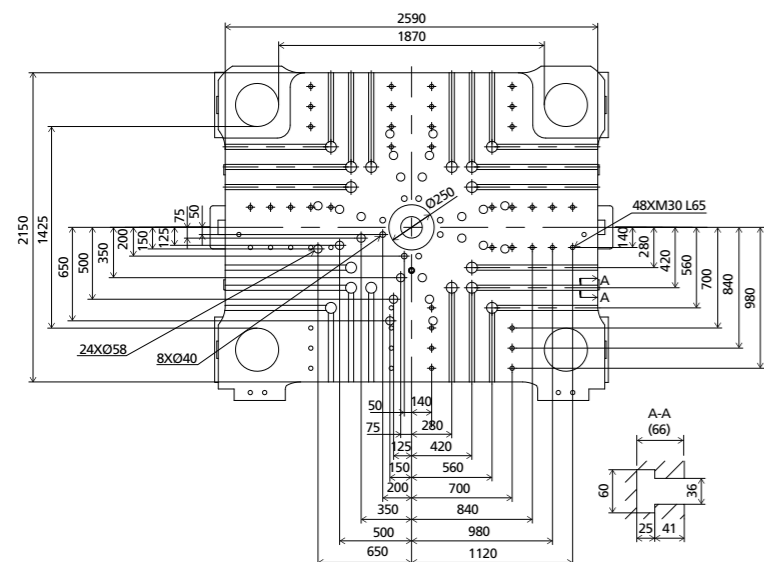
DIMENSIONS JU18500III

Clamping Unit



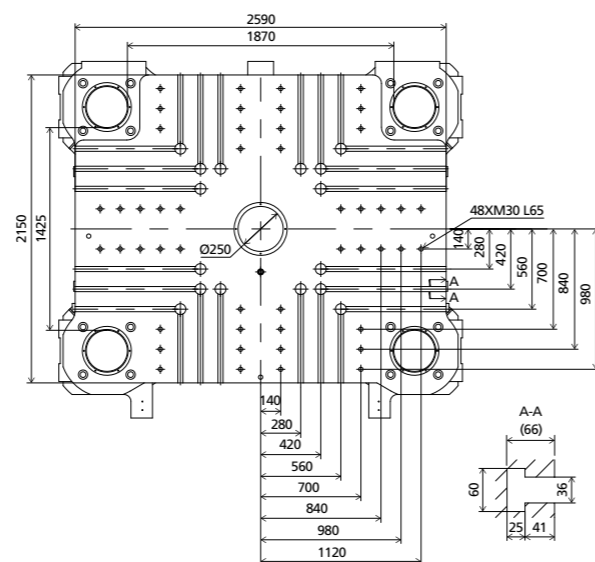
Platen dimensions

Moving platen



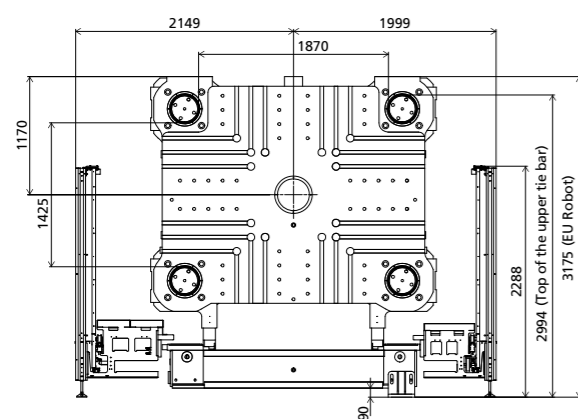
Platen dimensions

Fixed platen



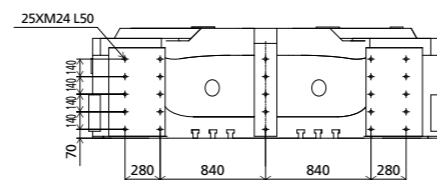
Robot

Mechanical interface

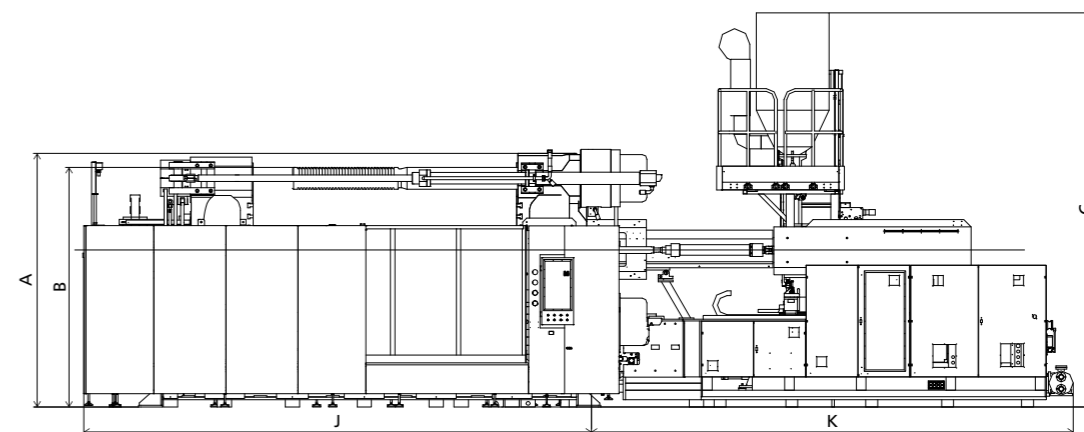


Robot

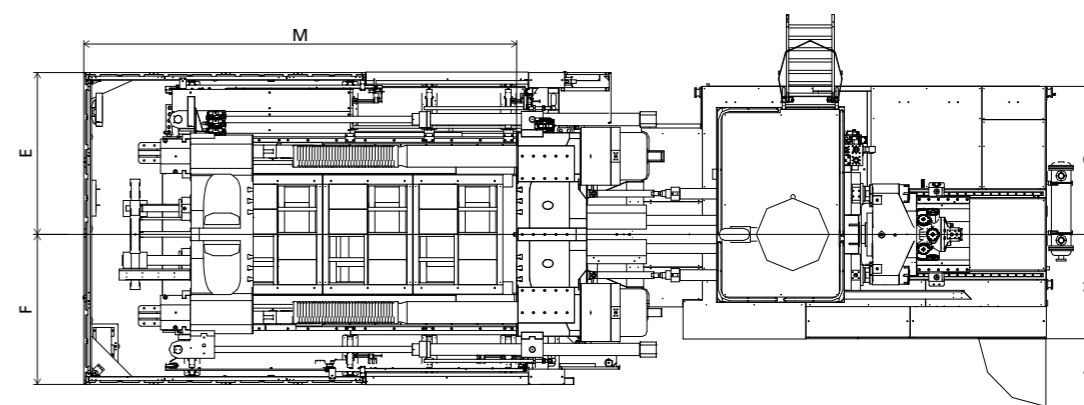
Top view fixed platen



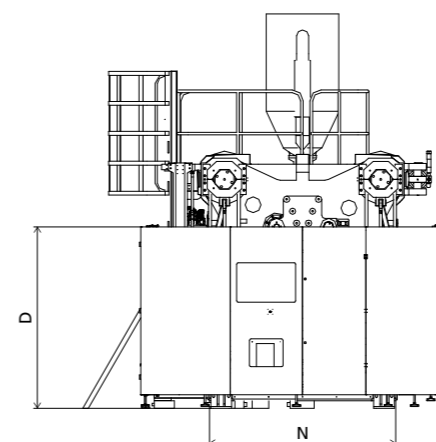
Front view



Top view



Side view



Standard

	A	B	C	D	E	F	G	H	I	J	K	M	N
11300	3175	2994	4595	2270	2149	1999	1318	1282	745	6306	5821	5321	2390
17300	3175	2994	4875	2270	2149	1999	1855	1305	850	6306	5971	5321	2390
22300	3175	2994	4860	2270	2149	1999	1925	1435	850	6306	6443	5321	2390
32300	3175	2994	4870	2270	2149	1999	1925	1435	850	6306	7431	5321	2390

INJECTION UNIT
DIMENSIONS (mm)

We reserve the right to make changes as a result of further technical advantages.

SPECIFICATION JU21000III

SPECIFICATIONS
INJECTION UNIT

	11300	17300	JU21000III		22300	32300	40300								
CLAMPING UNIT															
Clamping force	kN				21000			kN							
Space between tie bars	mm				1800×1600			mm							
Max. mold height	mm				1700			mm							
Min. mold height	mm				800			mm							
Ejector stroke	mm				450			mm							
Ejector force	kN				450			kN							
Max. daylight	mm				3500			mm							
Mold opening stroke ①	mm				2700/1800			mm							
Max. mold weight ②	t				50			t							
INJECTION UNIT															
Screw diameter	mm	A 110	B 120	C 130	D 140	A 130	B 140	C 150	A 140	B 150	A 160	B 170	A 170	B 185	mm
Screw L /D ratio	L/D	26.2	24	22.2	20.6	24	22.3	20.8	24	22.4	24	22.6	23.5	21.6	L/D
Shot size (theoretical)	cm ³	5227	6220	7300	8467	8362	9698	11133	10468	12017	17492	19747	23379	27687	cm ³
Injection weight (PS)	g	4756	5661	6643	7705	7610	8825	10131	9526	10935	15918	17970	21275	25195	g
Injection rate	g/s	1211	1441	1691	1961	1236	1433	1646	1379	1583	1590	1795	1651	1956	g/s
Injection pressure	MPa	190	159	136	117	186	160	140	185	161	161	142	148	125	MPa
Injection pressure(max)	MPa	218	183	156	135	211	182	158	211	184	181	160	168	142	MPa
Plasticizing capacity (GPPS) ③	g/s	146	169	195	223	168	192	220	155	176					g/s
Plasticizing capacity (HDPE) ④	g/s	223	259	250	287	252	283	336	243	294	280	310	309	320	g/s
Screw speed	rpm		125				102			85		72		70	rpm
OTHERS															
Max. pump pressure	MPa		25				25			25		25		25	MPa
Pump motor power	kW		75+37+55				75+37+55			75+55+55		75+55+55		75+55+75	kW
Heating power	kW		104				116			133		174		215	kW
Machine dimensions (L x W x H)	m		12.30×5.24×4.64				12.76×5.24×4.92			12.92×5.24×4.90		13.90×5.24×4.91		14.42×5.24×4.95	m
Machine weight	t		104				111			118		122		132	t
Hopper capacity	kg		400				400			400		400		400	kg
Oil tank capacity	l		1250				1550			1720		1720		2390	l

NOTE:

① with min. mold height / with max. mold height

② moving platen: 2/3 of max. mold weight

③ Plasticizing capacity (GPPS): note: GB standard, with application of GPPS plasticizing capacity of 3-zone screws

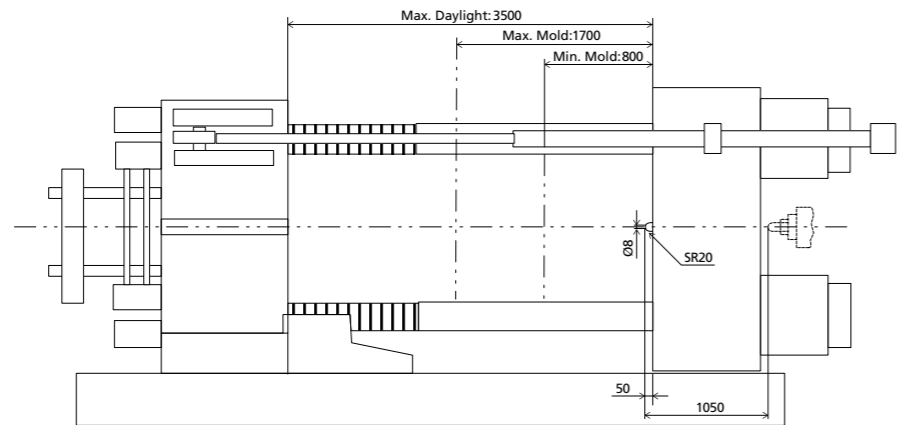
④ Plasticizing capacity (HDPE): note: Euromap 19, with application of HDPE plasticizing capacity of barrier screws

The above plasticizing capacity is for reference only.

We reserve the right to make changes as a result of further technical advantages.

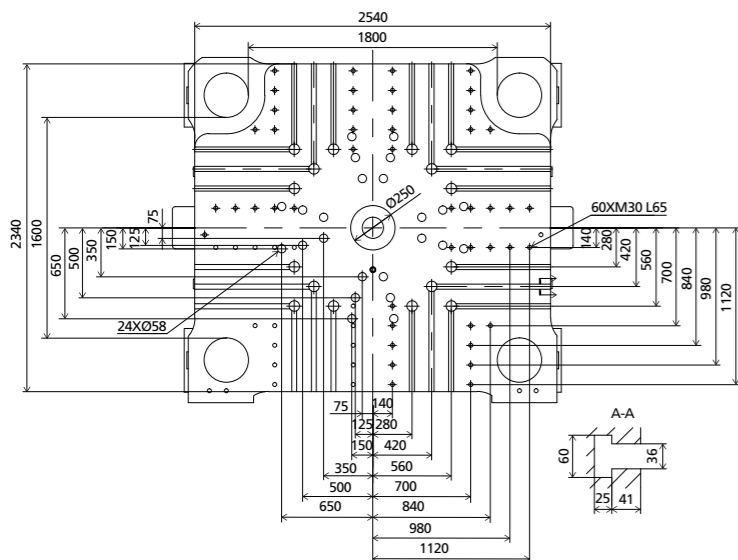
DIMENSIONS JU21000III

Clamping Unit



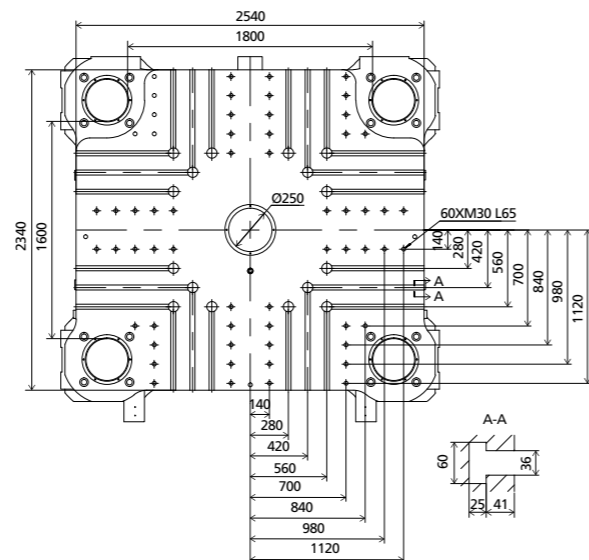
Platen dimensions

Moving platen



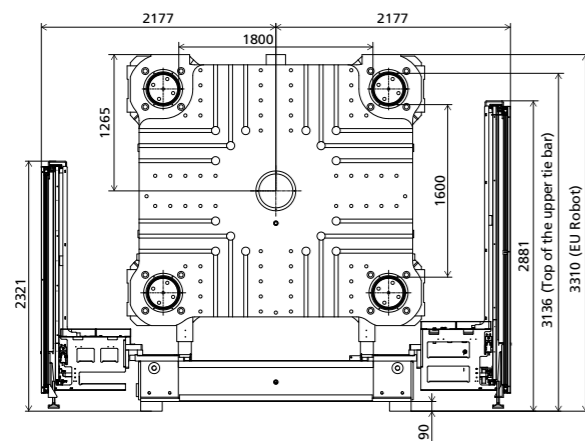
Platen dimensions

Fixed platen



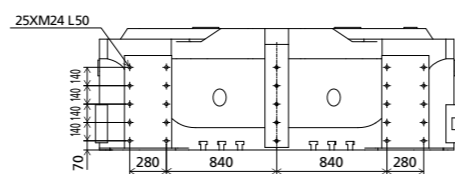
Robot

Mechanical interface

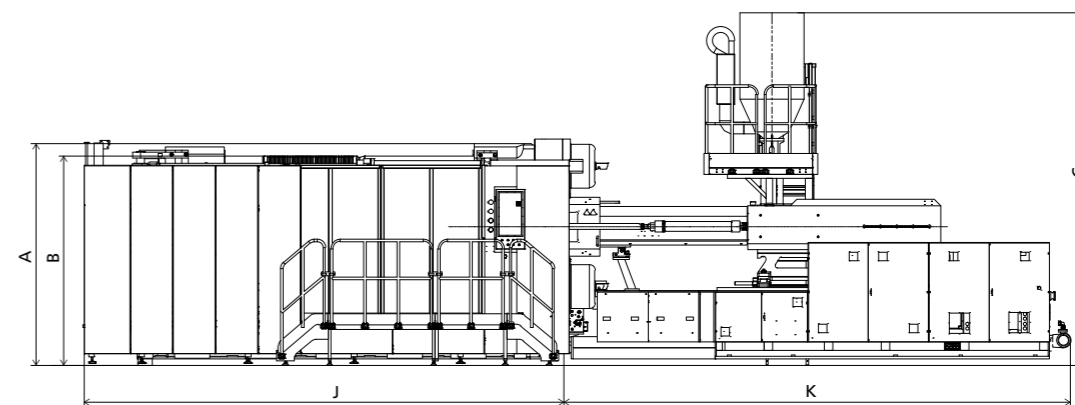


Robot

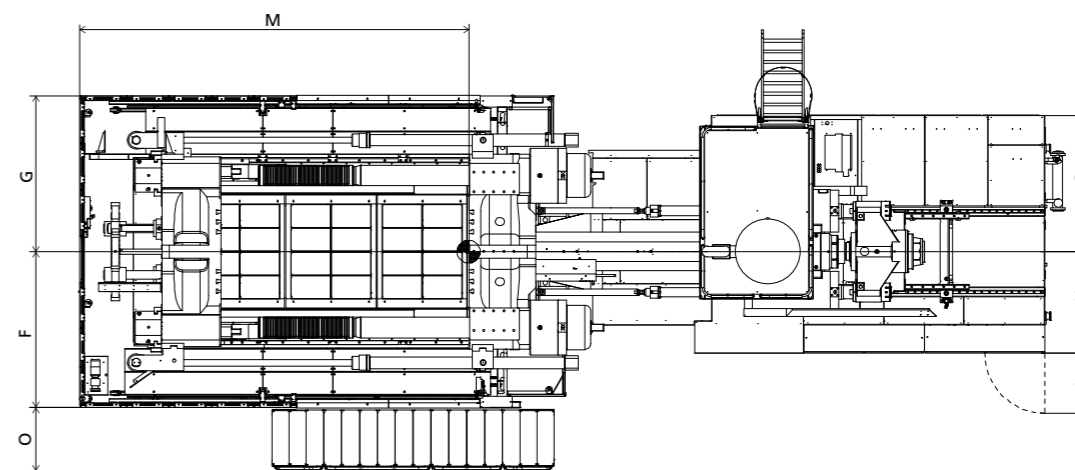
Top view fixed platen



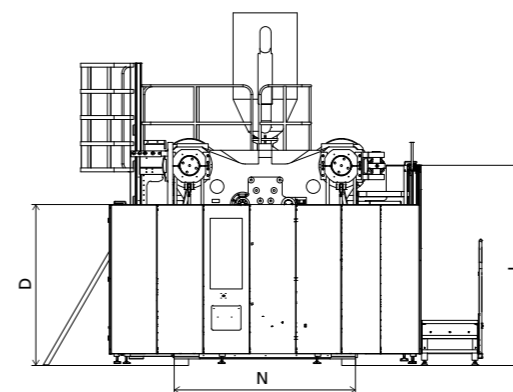
Front view



Top view



Side view



Standard

	A	B	C	D	E	F	G	H	I	J	K	L	M	N	O
11300	3310	3163	4635	2270	2177	2177	1318	1282	745	6469	5821	2830	5490	2510	864
17300	3310	3163	4915	2270	2177	2177	1855	1305	850	6469	6051	2830	5490	2510	864
22300	3310	3163	4900	2270	2177	2177	1925	1435	850	6469	6443	2830	5490	2510	864
32300	3310	3163	4910	2270	2177	2177	1925	1435	850	6469	7431	2830	5490	2510	864
40300	3310	3163	4950	2270	2177	2177	1965	1515	850	6469	7938	2830	5490	2510	864

INJECTION UNIT
DIMENSIONS (mm)

We reserve the right to make changes as a result of further technical advantages.

SPECIFICATION JU24000III

SPECIFICATIONS
INJECTION UNIT

	17300	22300	32300	JU24000III 40300	
CLAMPING UNIT					CLAMPING UNIT
Clamping force	kN			24000	kN
Space between tie bars	mm			2020×1620	mm
Max. mold height	mm			1800	mm
Min. mold height	mm			800	mm
Ejector stroke	mm			500	mm
Ejector force	kN			450	kN
Max. daylight	mm			3800	mm
Mold opening stroke ①	mm			3000/2000	mm
Max. mold weight ②	t			59	t
INJECTION UNIT					INJECTION UNIT
Screw diameter	mm	A B C	A B	A B	mm
Screw L /D ratio	L/D	24 22.3 20.8	24 22.4	24 22.6	L/D
Shot size (theoretical)	cm ³	8362 9698 11133	10468 12017	17492 19747	cm ³
Injection weight (PS)	g	7610 8825 10131	9526 10935	15918 17970	g
Injection rate	g/s	1375 1595 1831	1379 1583	1590 1795	g/s
Injection pressure	MPa	186 160 140	185 161	161 142	MPa
Injection pressure(max)	MPa	211 182 158	211 184	181 160	MPa
Plasticizing capacity (GPPS) ③	g/s	188 215 246	155 176		g/s
Plasticizing capacity (HDPE) ④	g/s	282 316 376	243 294	280 310	g/s
Screw speed	rpm	114	85	72	70
OTHERS					OTHERS
Max. pump pressure	MPa	25	25	25	MPa
Pump motor power	kW	75+55+55	75+55+55	75+55+55	kW
Heating power	kW	116	133	174	kW
Machine dimensions (L x W x H)	m	13.42×5.46×5.04	13.58×5.46×5.02	14.57×5.46×5.03	m
Machine weight	t	127	134	138	t
Hopper capacity	kg	400	400	400	kg
Oil tank capacity	l	1550	1720	1720	l

NOTE:

① with min. mold height / with max. mold height

② moving platen: 2/3 of max. mold weight

③ Plasticizing capacity (GPPS): note: GB standard, with application of GPPS plasticizing capacity of 3-zone screws

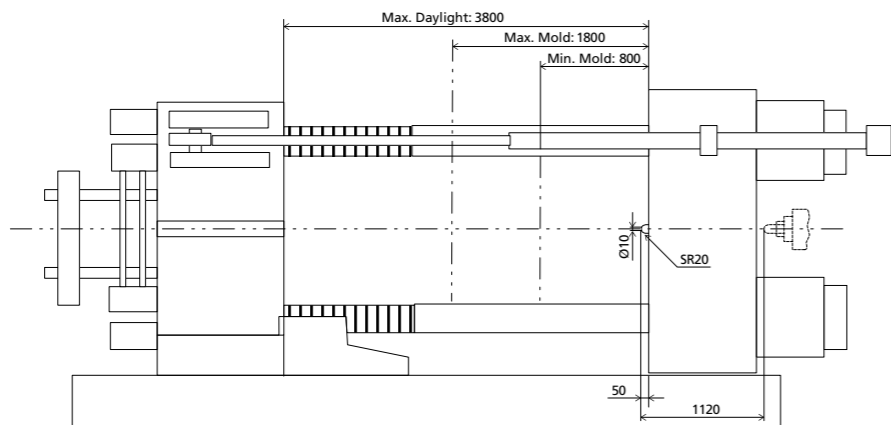
④ Plasticizing capacity (HDPE): note: Euromap 19, with application of HDPE plasticizing capacity of barrier screws

The above plasticizing capacity is for reference only.

We reserve the right to make changes as a result of further technical advantages.

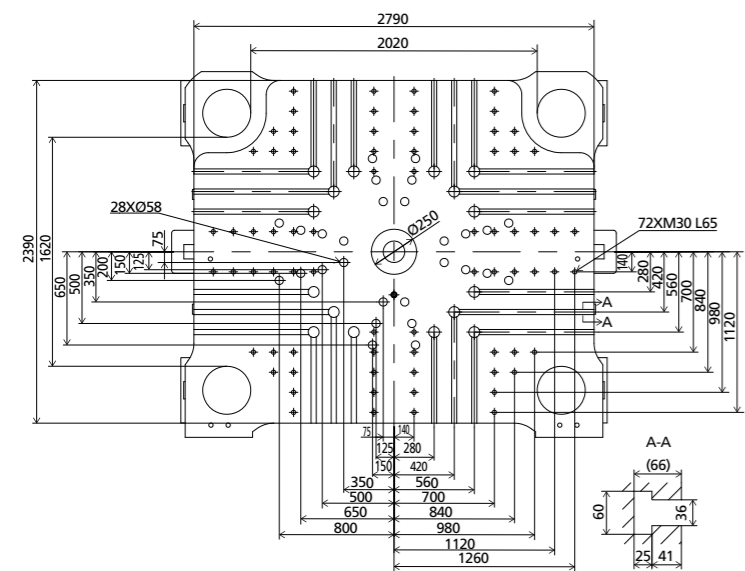
DIMENSIONS JU24000III

Clamping Unit



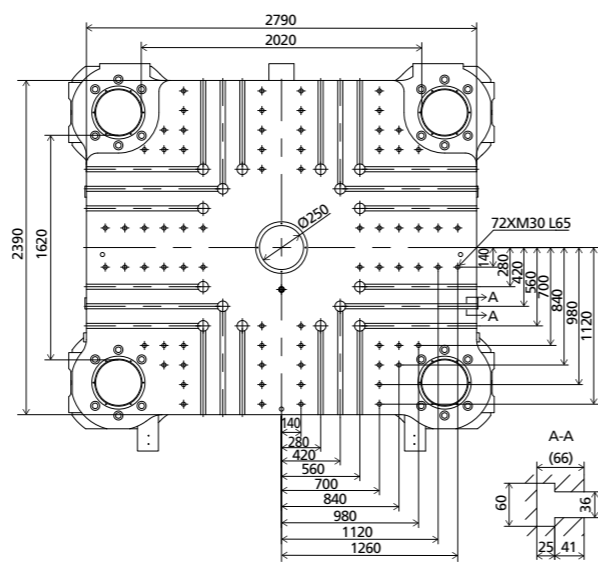
Platen dimensions

Moving platen



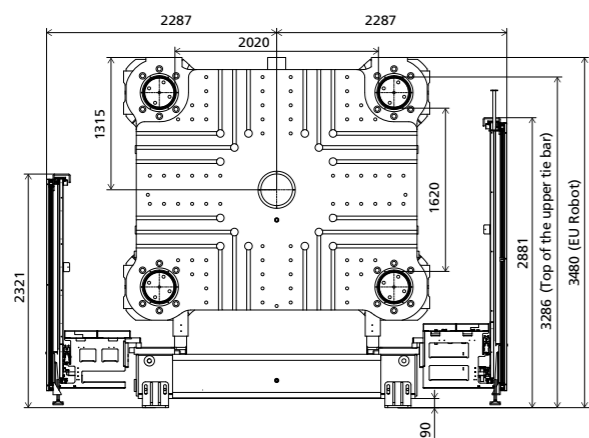
Platen dimensions

Fixed platen



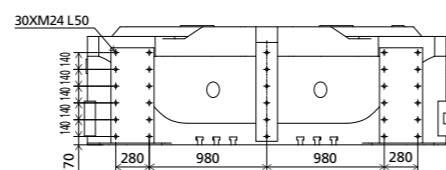
Robot

Mechanical interface

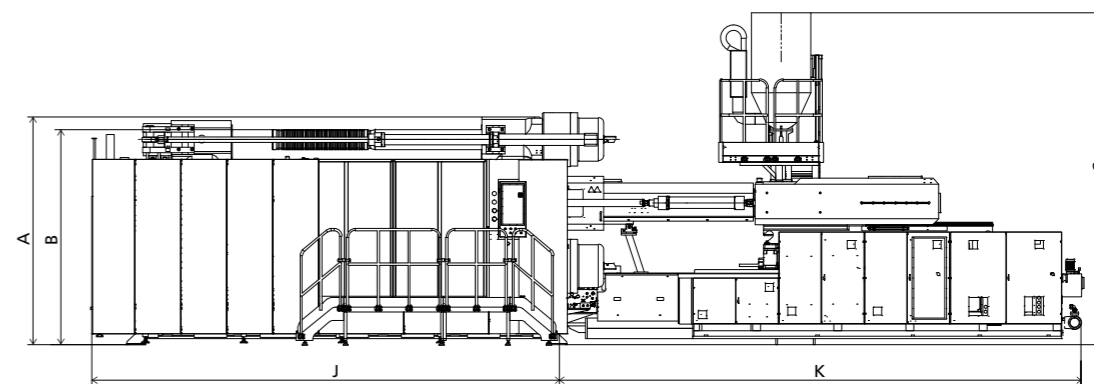


Robot

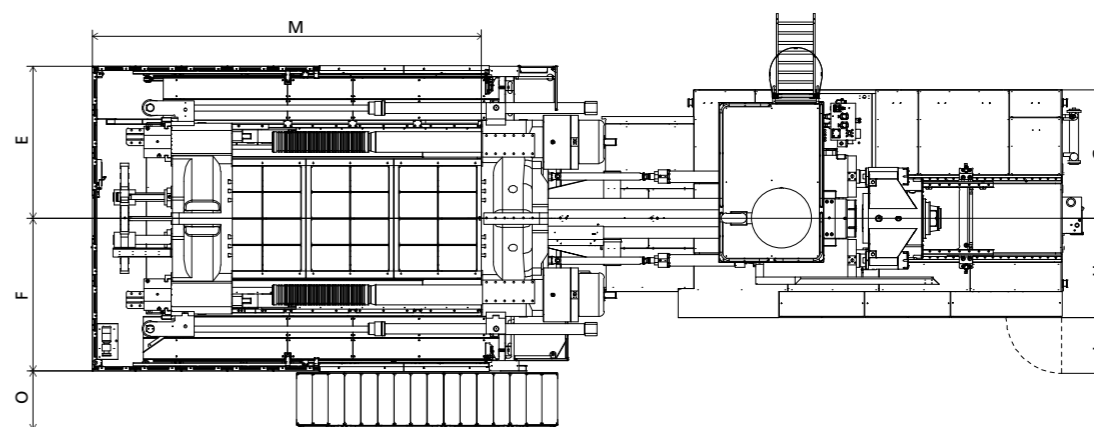
Top view fixed platen



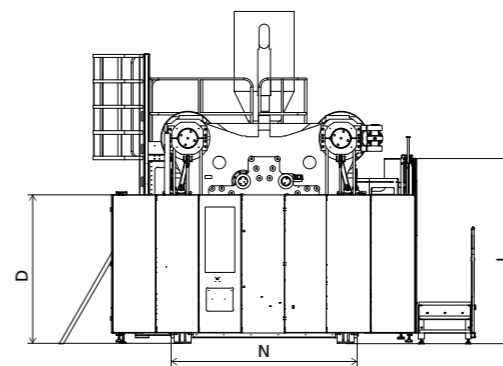
Front view



Top view



Side view



Standard

	A	B	C	D	E	F	G	H	I	J	K	L	M	N	O
17300	3480	3136	5035	2270	2287	2287	1855	1305	850	7125	6051	2830	5936	2750	864
22300	3480	3136	5020	2270	2287	2287	1925	1435	850	7125	6443	2830	5936	2750	864
32300	3480	3136	5030	2270	2287	2287	1925	1435	850	7125	7431	2830	5936	2750	864
40300	3480	3136	5070	2270	2287	2287	1965	1515	850	7125	7938	2830	5936	2750	864

INJECTION UNIT
DIMENSIONS (mm)

We reserve the right to make changes as a result of further technical advantages.

SPECIFICATION JU28000III

SPECIFICATIONS
INJECTION UNIT

	22300	32300	40300	JU28000III 50300	62300			
CLAMPING UNIT								
Clamping force	kN			28000		kN Clamping force		
Space between tie bars	mm			2185×1755		mm Space between tie bars		
Max. mold height	mm			2000		mm Max. mold height		
Min. mold height	mm			800		mm Min. mold height		
Ejector stroke	mm			500		mm Ejector stroke		
Ejector force	kN			450		kN Ejector force		
Max. daylight	mm			4100		mm Max. daylight		
Mold opening stroke ①	mm			3300/2100		mm Mold opening stroke ①		
Max. mold weight ②	t			66		t Max. mold weight ②		
INJECTION UNIT								
		A	B					
Screw diameter	mm	140	150	170	185	200	220	mm Screw diameter
Screw L /D ratio	L/D	24	22.4	23.5	21.6	20	20.5	L/D Screw L /D ratio
Shot size (theoretical)	cm ³	10468	12017	23379	27687	35186	45616	cm ³ Shot size (theoretical)
Injection weight (PS)	g	9526	10935	21275	25195	32019	41510	g Injection weight (PS)
Injection rate	g/s	1460	1676	1651	1956	2314	2492	g/s Injection rate
Injection pressure	MPa	185	161	148	125	128	119	MPa Injection pressure
Injection pressure(max)	MPa	211	184	168	142	143	134	MPa Injection pressure(max)
Plasticizing capacity (GPPS) ③	g/s	171	195					g/s Plasticizing capacity (GPPS) ③
Plasticizing capacity (HDPE) ④	g/s	269	325	309	320	380	370	g/s Plasticizing capacity (HDPE) ④
Screw speed	rpm	94	81	70	70	70	53	rpm Screw speed
OTHERS								
Max. pump pressure	MPa	25	25	25	25	25	25	MPa Max. pump pressure
Pump motor power	kW	75+55+75	75+55+75	75+55+75	75+55+75	75+75+30+75	75+75+30+75	kW Pump motor power
Heating power	kW	133	174	215	215	215	223	kW Heating power
Machine dimensions (L x W x H)	m	14.02×5.60×5.17	15.01×5.60×5.18	15.51×5.60×5.22	15.93×5.60×5.26	15.93×5.60×5.26	16.66×5.60×5.26	m Machine dimensions (L x W x H)
Machine weight	t	156	160	170	176	176	182	t Machine weight
Hopper capacity	kg	400	400	400	400	400	400	kg Hopper capacity
Oil tank capacity	l	1720	1720	2390	2880	2880	2880	l Oil tank capacity

NOTE:

① with min. mold height / with max. mold height

② moving platen: 2/3 of max. mold weight

③ Plasticizing capacity (GPPS): note: GB standard, with application of GPPS plasticizing capacity of 3-zone screws

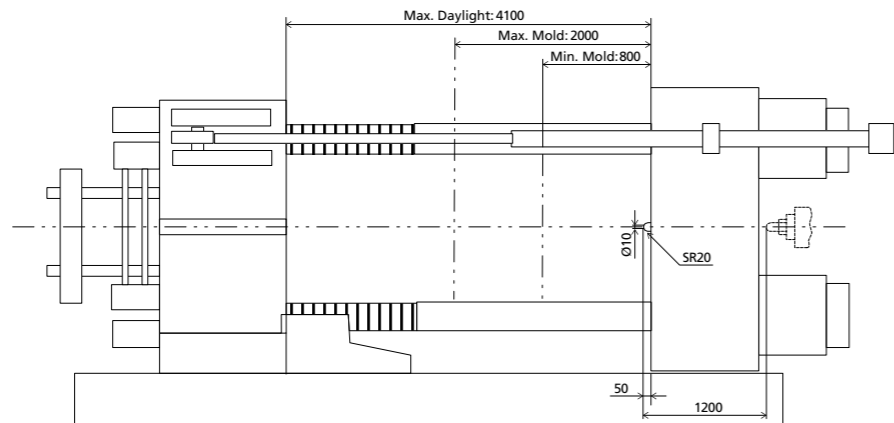
④ Plasticizing capacity (HDPE): note: Euromap 19, with application of HDPE plasticizing capacity of barrier screws

The above plasticizing capacity is for reference only.

We reserve the right to make changes as a result of further technical advantages.

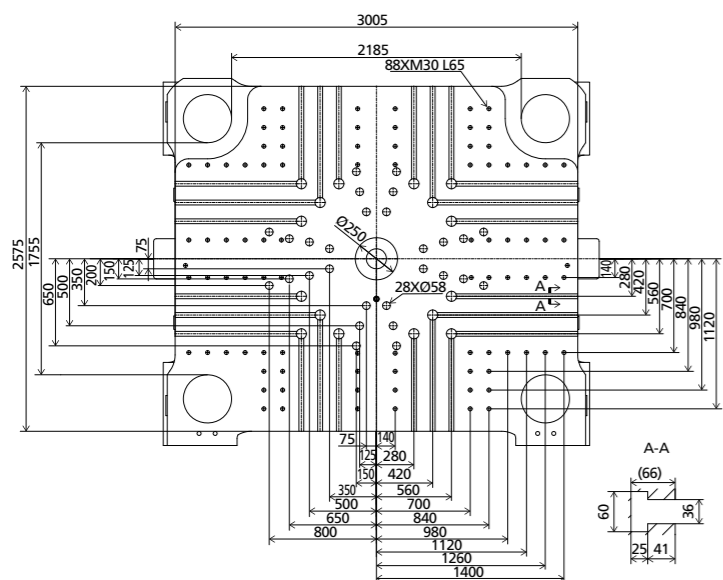
DIMENSIONS JU28000III

Clamping Unit



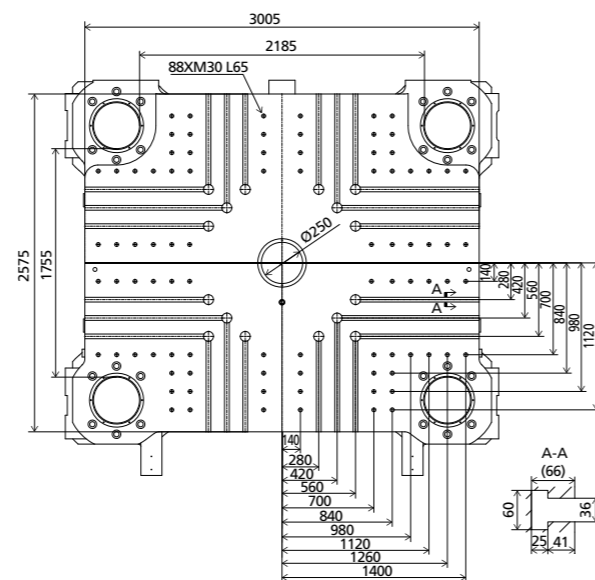
Platen dimensions

Moving platen



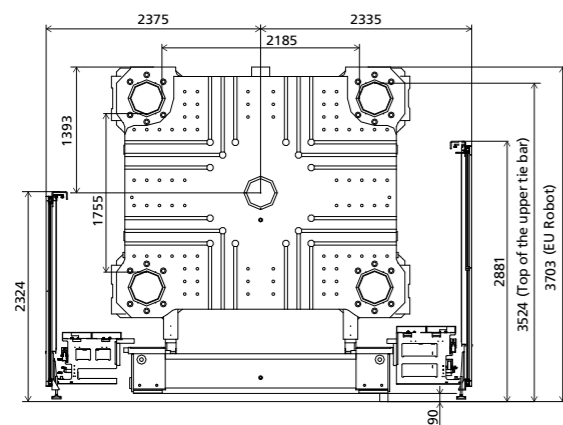
Platen dimensions

Fixed platen



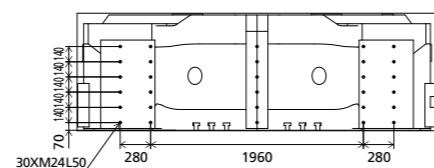
Robot

Mechanical interface

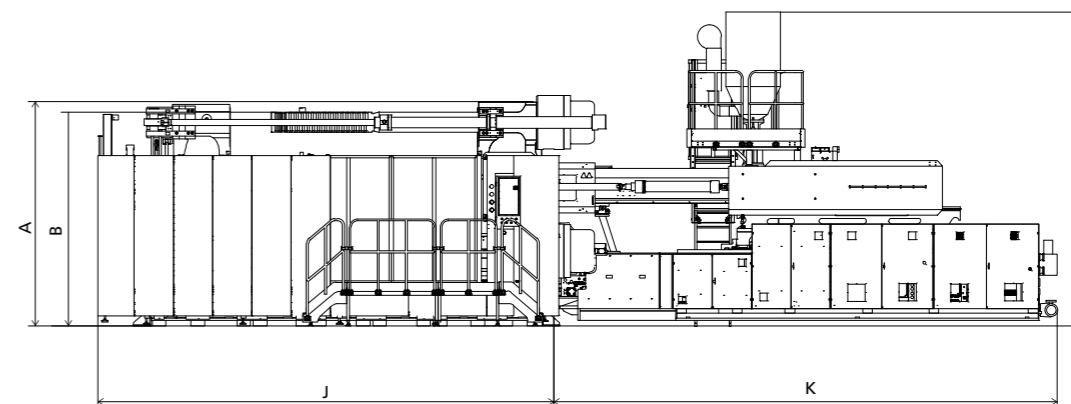


Robot

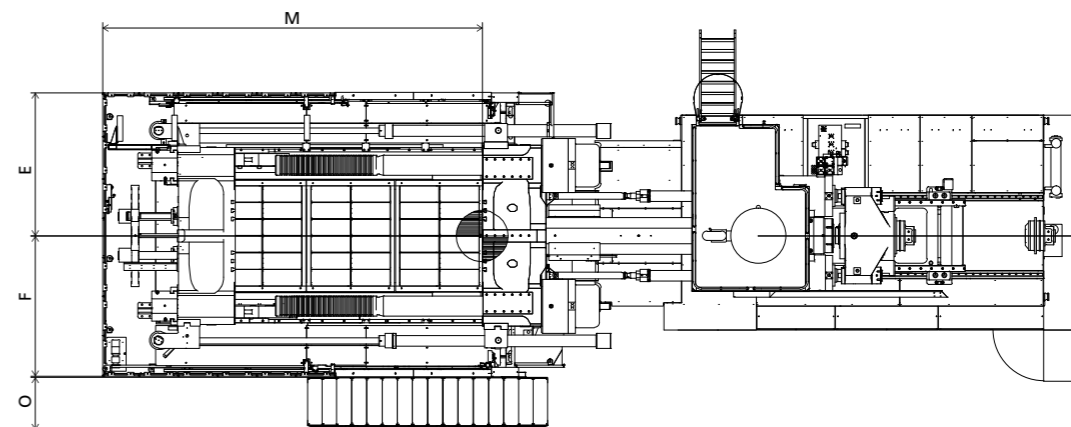
Top view fixed platen



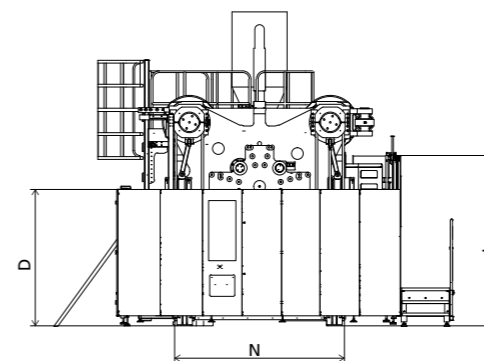
Front view



Top view



Side view



Standard

	A	B	C	D	E	F	G	H	I	J	K	L	M	N	O
22300	3703	3524	5165	2270	2375	2335	1925	1435	850	7570	6443	2830	6300	2817	864
32300	3703	3524	5175	2270	2375	2335	1925	1435	850	7570	7431	2830	6300	2817	864
40300	3703	3524	5215	2270	2375	2335	1965	1515	850	7570	7938	2830	6300	2817	864
50300	3703	3524	5255	2270	2375	2335	2005	1565	850	7570	8355	2830	6300	2817	864
62300	3703	3524	5255	2270	2375	2335	2005	1565	850	7570	8895	2830	6300	2817	864

INJECTION UNIT
DIMENSIONS (mm)

We reserve the right to make changes as a result of further technical advantages.

SPECIFICATION JU33000III

SPECIFICATIONS
INJECTION UNIT

	22300	32300	40300	50300	JU33000III 62300					
CLAMPING UNIT										
Clamping force	kN				33000	kN Clamping force				
Space between tie bars	mm				2270×1900	mm Space between tie bars				
Max. mold height	mm				2000	mm Max. mold height				
Min. mold height	mm				1000	mm Min. mold height				
Ejector stroke	mm				550	mm Ejector stroke				
Ejector force	kN				580	kN Ejector force				
Max. daylight	mm				4200	mm Max. daylight				
Mold opening stroke ①	mm				3200/2200	mm Mold opening stroke ①				
Max. mold weight ②	t				75	t Max. mold weight ②				
INJECTION UNIT										
		A	B	A	B	A	B			
Screw diameter	mm	140	150	160	170	170	185	200	220	mm Screw diameter
Screw L /D ratio	L/D	24	22.4	24	22.6	23.5	21.6	20	20.5	L/D Screw L /D ratio
Shot size (theoretical)	cm ³	10468	12017	17492	19747	23379	27687	35186	45616	cm ³ Shot size (theoretical)
Injection weight (PS)	g	9526	10935	15918	17970	21275	25195	32019	41510	g Injection weight (PS)
Injection rate	g/s	1460	1676	1684	1901	1651	1956	2314	2492	g/s Injection rate
Injection pressure	MPa	185	161	161	142	148	125	128	119	MPa Injection pressure
Injection pressure(max)	MPa	211	184	181	160	168	142	143	134	MPa Injection pressure(max)
Plasticizing capacity (GPPS) ③	g/s	171	195							g/s Plasticizing capacity (GPPS) ③
Plasticizing capacity (HDPE) ④	g/s	269	325	315	349	309	320	380	370	g/s Plasticizing capacity (HDPE) ④
Screw speed	rpm	94		81		70		70	53	rpm Screw speed
OTHERS										
Max. pump pressure	MPa	25		25		25		25	25	MPa Max. pump pressure
Pump motor power	kW	75+55+75		75+55+75		75+55+75		75+75+30+75	75+75+30+75	kW Pump motor power
Heating power	kW	133		174		215		215	223	kW Heating power
Machine dimensions (L x W x H)	m	14.42×5.92×5.34		15.41×5.92×5.34		15.92×5.92×5.38		16.33×5.92×5.42	17.07×5.92×5.42	m Machine dimensions (L x W x H)
Machine weight	t	178		182		192		198	204	t Machine weight
Hopper capacity	kg	400		400		400		400	400	kg Hopper capacity
Oil tank capacity	l	1720		1720		2390		2880	2880	l Oil tank capacity

NOTE:

① with min. mold height / with max. mold height

② moving platen: 2/3 of max. mold weight

③ Plasticizing capacity (GPPS): note: GB standard, with application of GPPS plasticizing capacity of 3-zone screws

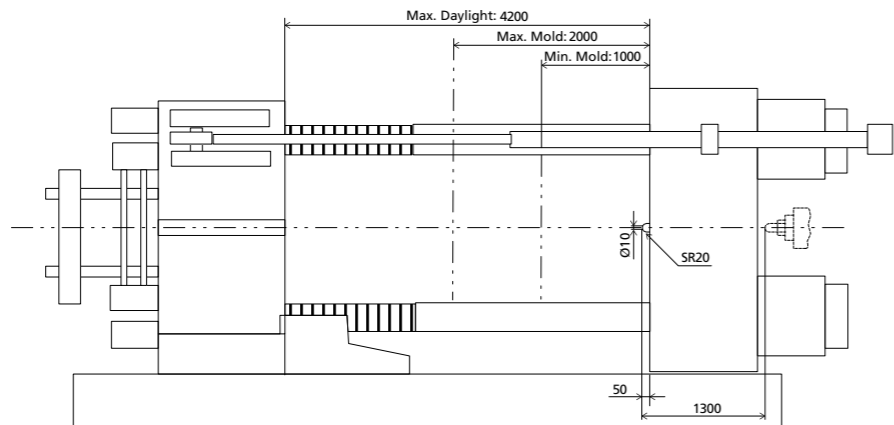
④ Plasticizing capacity (HDPE): note: Euromap 19, with application of HDPE plasticizing capacity of barrier screws

The above plasticizing capacity is for reference only.

We reserve the right to make changes as a result of further technical advantages.

DIMENSIONS JU33000III

Clamping Unit

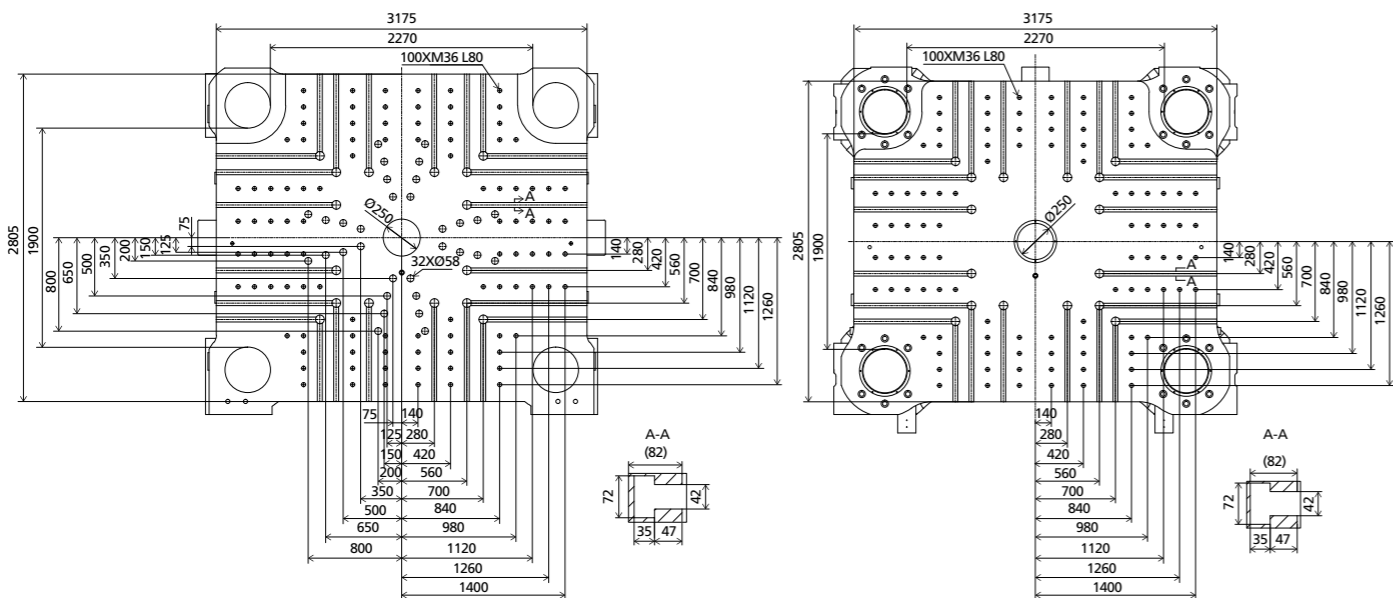


Platen dimensions

Moving platen

Platen dimensions

Fixed platen

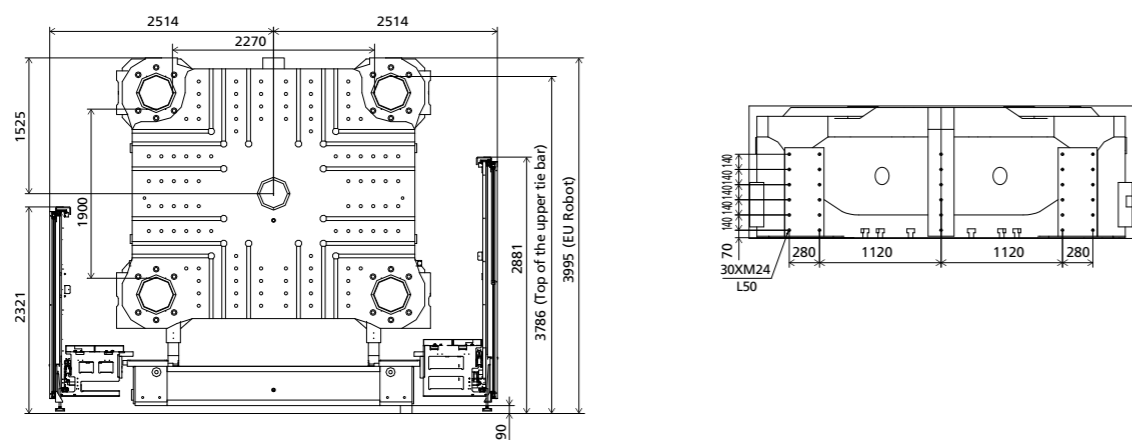


Robot

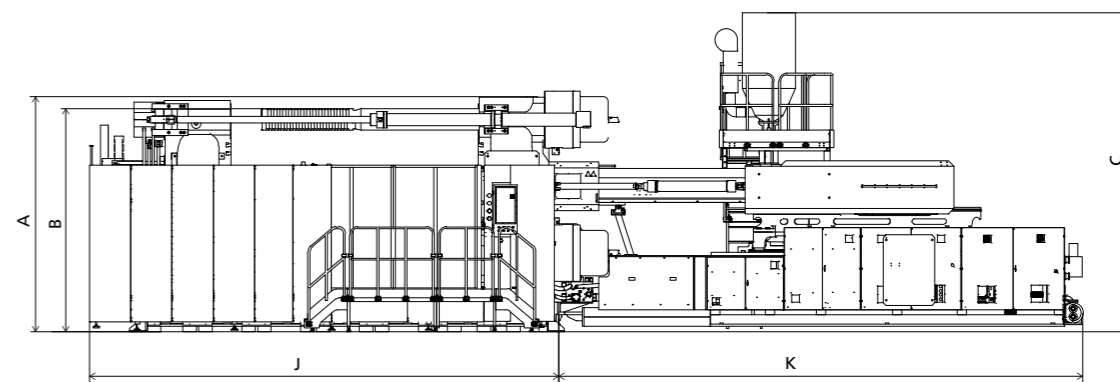
Mechanical interface

Robot

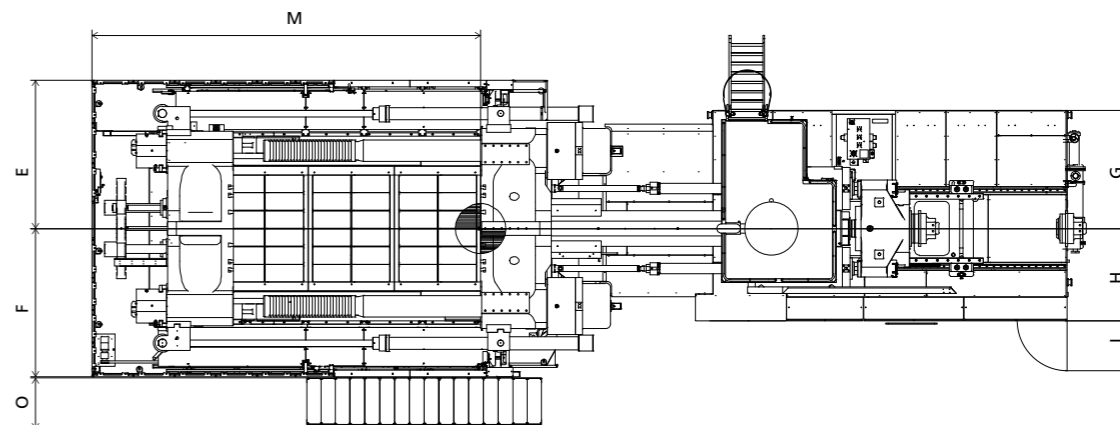
Top view fixed platen



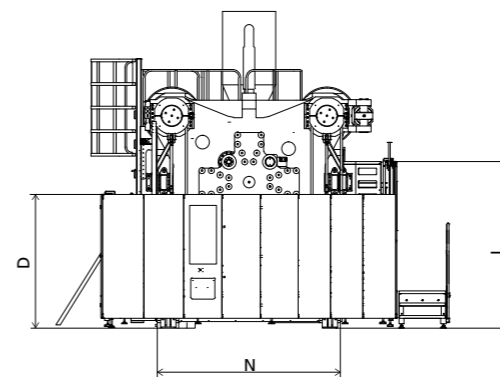
Front view



Top view



Side view



Standard

	A	B	C	D	E	F	G	H	I	J	K	L	M	N	O
22300	3995	3786	5325	2270	2514	2514	1925	1435	850	7975	6443	2830	6605	3110	864
32300	3995	3786	5335	2270	2514	2514	1925	1435	850	7975	7431	2830	6605	3110	864
40300	3995	3786	5375	2270	2514	2514	1965	1515	850	7975	7938	2830	6605	3110	864
50300	3995	3786	5415	2270	2514	2514	2005	1565	850	7975	8355	2830	6605	3110	864
62300	3995	3786	5415	2270	2514	2514	2005	1565	850	7975	8895	2830	6605	3110	864

INJECTION UNIT
DIMENSIONS (mm)

We reserve the right to make changes as a result of further technical advantages.

SPECIFICATION JU40000III

SPECIFICATIONS

INJECTION UNIT

		JU40000III			
		93300	106300		
CLAMPING UNIT			CLAMPING UNIT		
Clamping force	kN		40000	kN	Clamping force
Space between tie bars	mm		2400×2000	mm	Space between tie bars
Max. mold height	mm		2200	mm	Max. mold height
Min. mold height	mm		1000	mm	Min. mold height
Ejector stroke	mm		550	mm	Ejector stroke
Ejector force	kN		580	kN	Ejector force
Max. daylight	mm		4460	mm	Max. daylight
Mold opening stroke ①	mm		3460/2260	mm	Mold opening stroke ①
Max. mold weight ②	t		86	t	Max. mold weight ②
INJECTION UNIT			INJECTION UNIT		
Screw diameter	mm	240	260	mm	Screw diameter
Screw L /D ratio	L/D	23	23	L/D	Screw L /D ratio
Shot size (theoretical)	cm ³	60168	80170	cm ³	Shot size (theoretical)
Injection weight (PS)	g	54753	72955	g	Injection weight (PS)
Injection rate	g/s	2860	3356	g/s	Injection rate
Injection pressure	MPa	141	120	MPa	Injection pressure
Injection pressure(max)	MPa	156	133	MPa	Injection pressure(max)
Plasticizing capacity (GPPS) ③	g/s			g/s	Plasticizing capacity (GPPS) ③
Plasticizing capacity (HDPE) ④	g/s	470	500	g/s	Plasticizing capacity (HDPE) ④
Screw speed	rpm	50	42	rpm	Screw speed
OTHERS			OTHERS		
Max. pump pressure	MPa	25	25	MPa	Max. pump pressure
Pump motor power	kW	75+75+75+45+75	75+75+75+45+75	kW	Pump motor power
Heating power	kW	290	314	kW	Heating power
Machine dimensions (L x W x H)	m	19.33×6.05×5.92	19.83×6.05×5.92	m	Machine dimensions (L x W x H)
Machine weight	t	258	265	t	Machine weight
Hopper capacity	kg	600	600	kg	Hopper capacity
Oil tank capacity	l	3940	3940	l	Oil tank capacity

NOTE:

① with min. mold height / with max. mold height

② moving platen: 2/3 of max. mold weight

③ Plasticizing capacity (GPPS): note: GB standard, with application of GPPS plasticizing capacity of 3-zone screws

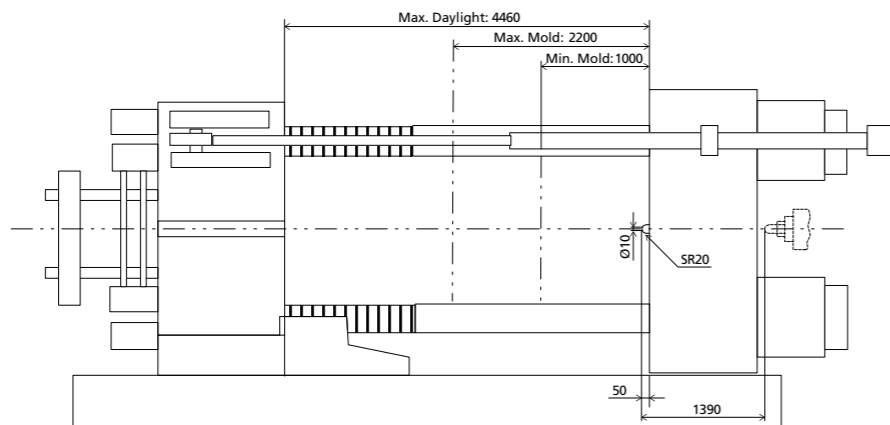
④ Plasticizing capacity (HDPE): note: Euromap 19, with application of HDPE plasticizing capacity of barrier screws

The above plasticizing capacity is for reference only.

We reserve the right to make changes as a result of further technical advantages.

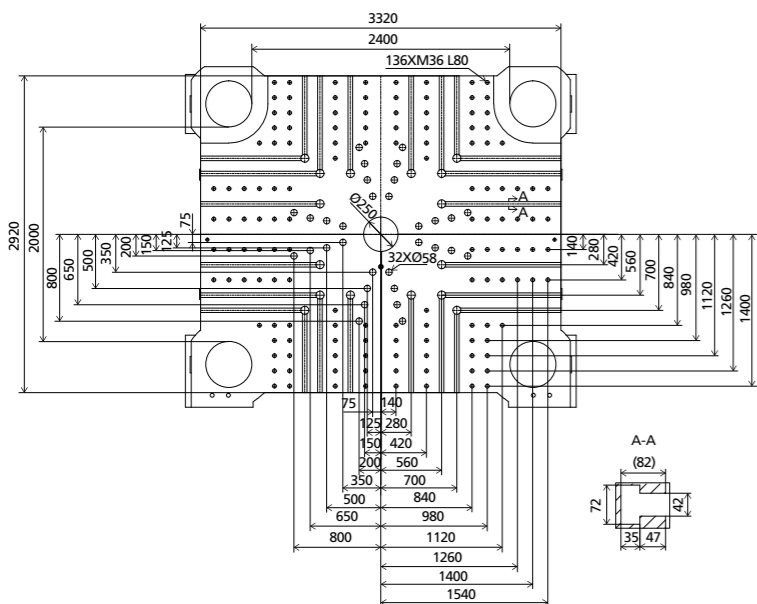
DIMENSIONS JU40000III

Clamping Unit



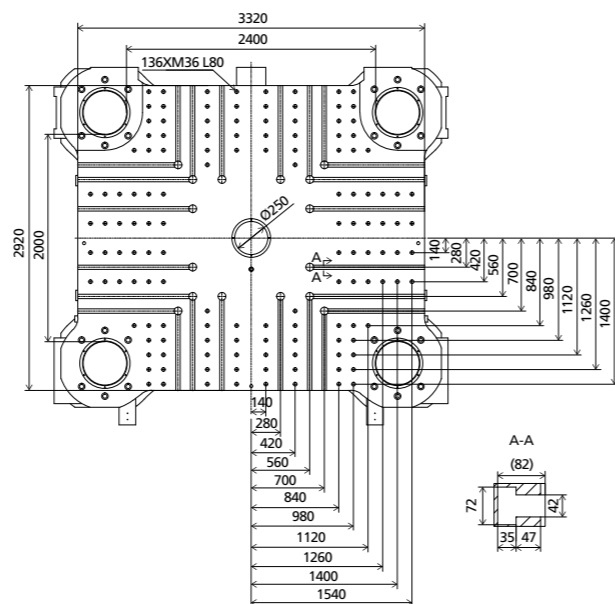
Platen dimensions

Moving platen



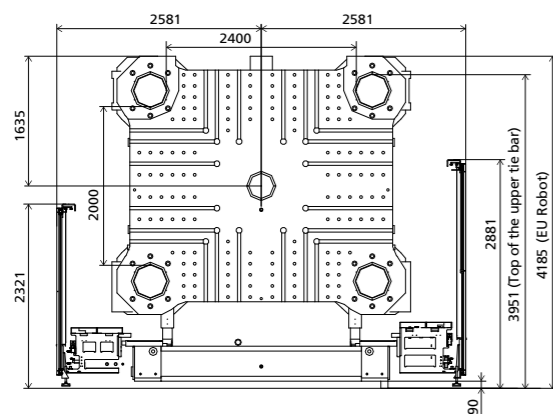
Platen dimensions

Fixed platen



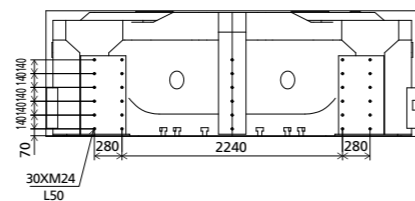
Robot

Mechanical interface

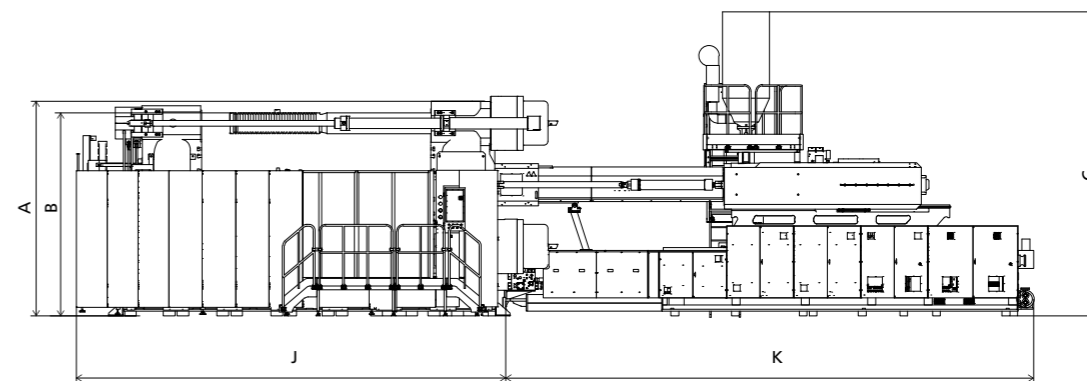


Robot

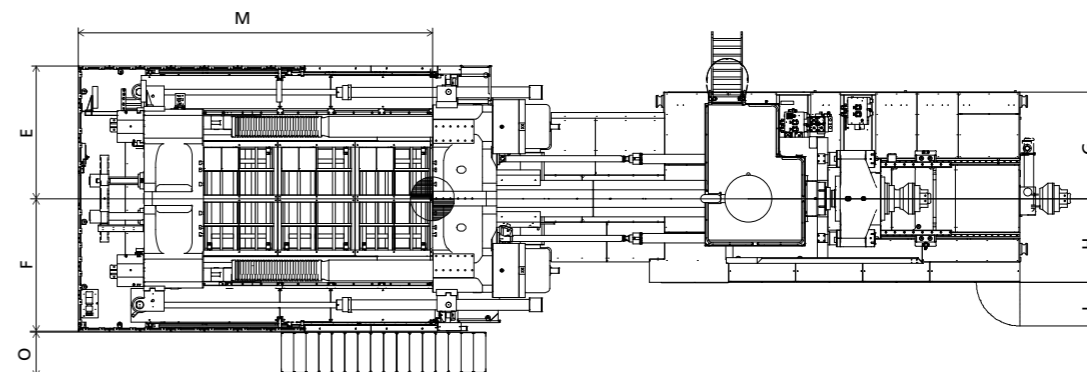
Top view fixed platen



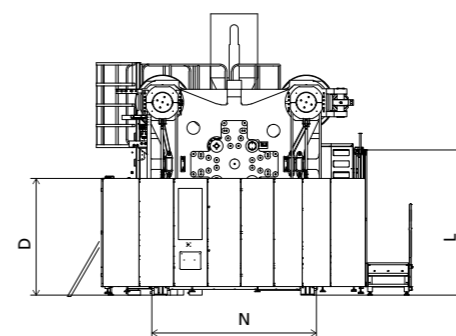
Front view



Top view



Side view



Standard

	A	B	C	D	E	F	G	H	I	J	K	L	M	N	O
93300	4185	3591	5920	2270	2581	2581	2075	1635	850	8360	10288	2830	6900	3200	864
106300	4185	3591	5920	2270	2581	2581	2075	1635	850	8360	10288	2830	6900	3200	864

INJECTION UNIT
DIMENSIONS (mm)