

HAITIAN INTERNATIONAL HOLDINGS LIMITED

Unit 1105 Level 11
Metroplaza Tower 2
223 Hing Fong RD Kwai Fong N.T
haitian@mail.haitian.com
www.haitian.com

NINGBO HAITIAN HUAYUAN MACHINERY CO., LTD,

Export Processing Zone, Ningbo 315800 China
Tel +86-574-86177242
Fax +86-574-86221864
haitian@mail.haitian.com
www.haitian.com

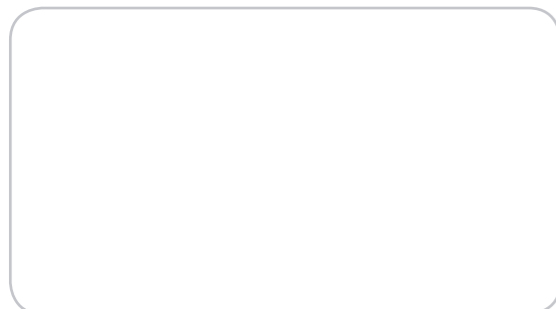
Haitian **Jupiter²** Series

Specifications / International

12000-40000kN



Haitian Partner:



HT20161114-IV



COMBINATION POSSIBILITIES

JUPITER II SERIES

Standard range

Combination possibilities

	5000	6800	8400	10600	14600	19300	37000	50000	62000	88000	106000
CLAMPING UNIT (kN)											
INJECTION UNIT											
12000											
13000											
14000											
16000											
18500											
21000											
24000											
28000											
33000											
40000											



SPECIFICATIONS
INJECTION UNIT

	5000				6800				STANDARD 8400				10600						
CLAMPING UNIT																			
Clamping force									12000								kN	Clamping force	
Space between tie bars									1300 x 1200								mm	Space between tie bars	
Max. mold height									1250								mm	Max. mold height	
Min. mold height									600								mm	Min. mold height	
Ejector stroke									350								mm	Ejector stroke	
Ejector force									230								kN	Ejector force	
Max. daylight									2650								mm	Max. daylight	
Mold opening stroke *									2050 / 1400								mm	Mold opening stroke *	
Max. mold weight **									20								t	Max. mold weight **	
INJECTION UNIT																			
Screw diameter	mm	A	B	C	D	A	B	C	D	A	B	C	D	A	B	C	D	mm	Screw diameter
Screw L /D ratio	L/D	24.8	22	19.8	18	24.4	22	20	18.3	24.2	22	20.2	18.6	26.2	24	22.2	20.6	L/D	Screw L /D ratio
Shot size (theoretical)	cm ³	2262	2863	3534	4276	2990	3691	4467	5316	4006	4847	5768	6769	5227	6220	7300	8467	cm ³	Shot size (theoretical)
Injection weight (PS)	g	2058	2605	3216	3891	2721	3359	4065	4838	3645	4410	5249	6160	4756	5661	6643	7705	g	Injection weight (PS)
Injection rate	g/s	487	616	761	921	526	650	787	936	682	825	982	1153	806	960	1126	1306	g/s	Injection rate
Injection pressure	Mpa	225	178	144	119	235	190	157	132	220	182	153	130	204	171	146	126	Mpa	Injection pressure
Plasticizing rate (PS)	g/s	70.9	88.9	109	129	88.1	108	128.4	149.9	101	121	140	161	119	138	159	182	g/s	Plasticizing rate (PS)
Screw speed	rpm	0-145				0-133				0-115				0-102				rpm	Screw speed
OTHERS																			
Max. pump pressure	Mpa	21				21				21				21				Mpa	Max. pump pressure
Pump motor power	kW	45+22+7.5				55+22+7.5				55 + 37 + 7.5				75 + 37 + 7.5				kW	Pump motor power
Heating power	kW	54.25				70.6				82.8				104				kW	Heating power
Machine dimensions (l x w x h)		10.7 x 3.4 x 2.8				10.7 x 3.4 x 2.8				10.7 x 3.4 x 4.2				11 x 3.4 x 4.2				(l x w x h)	Machine dimensions
Machine weight	t	52				54				56				59				t	Machine weight
Hopper capacity	kg	100				100				200				400				kg	Hopper capacity
Oil tank capacity	l	950				1070				1200				1200				l	Oil tank capacity

NOTE:
 *) with min. mold height / with max. mold height
 **) moving platen: 2/3 of max. mold weight

We reserve the right to make changes as a result of further technical advantages.



SPECIFICATIONS
INJECTION UNIT

	6800				8400				STANDARD 10600				14600				
CLAMPING UNIT																	
Clamping force									13000							kN	Clamping force
Space between tie bars									1380 × 1280							mm	Space between tie bars
Max. mold height									1350							mm	Max. mold height
Min. mold height									650							mm	Min. mold height
Ejector stroke									350							mm	Ejector stroke
Ejector force									230							kN	Ejector force
Max. daylight									2850							mm	Max. daylight
Mold opening stroke *									2200 / 1500							mm	Mold opening stroke *
Max. mold weight **									23							t	Max. mold weight **
INJECTION UNIT																	
Screw diameter	A	B	C	D	A	B	C	D	A	B	C	D	A	B	C	mm	Screw diameter
Screw L /D ratio	24.4	22	20	18.3	24.2	22	20.2	18.6	26.2	24	22.2	20.6	24	22.3	20.8	L/D	Screw L /D ratio
Shot size (theoretical)	2990	3691	4467	5316	4006	4847	5768	6769	5227	6220	7300	8467	8362	9698	11133	cm ³	Shot size (theoretical)
Injection weight (PS)	2721	3359	4065	4838	3645	4410	5249	6160	4756	5661	6643	7705	7610	8825	10131	g	Injection weight (PS)
Injection rate	526	650	787	936	682	825	982	1153	806	960	1126	1306	1154	1338	1536	g/s	Injection rate
Injection pressure	235	190	157	132	220	182	153	130	204	171	146	126	174	150	131	Mpa	Injection pressure
Plasticizing rate (PS)	88.1	108	128.4	149.9	101	121	140	161	119	138	159	182	160	183	209	g/s	Plasticizing rate (PS)
Screw speed	0-133				0-115				0-102				0-97			rpm	Screw speed
OTHERS																	
Max. pump pressure	21				21				21				21			Mpa	Max. pump pressure
Pump motor power	55+22+7.5				55 + 37 + 7.5				75 + 37 + 7.5				110+37+7.5			kW	Pump motor power
Heating power	70.6				82.8				104				115.5			kW	Heating power
Machine dimensions (l x w x h)	10.4 × 3.5 × 3.1				10.5 × 3.5 × 4				11.4 × 3.5 × 4.4				11.8 × 3.5 × 5			(l x w x h)	Machine dimensions
Machine weight	61				63				65				70			t	Machine weight
Hopper capacity	100				200				400				400			kg	Hopper capacity
Oil tank capacity	1070				1200				1200				1690			l	Oil tank capacity

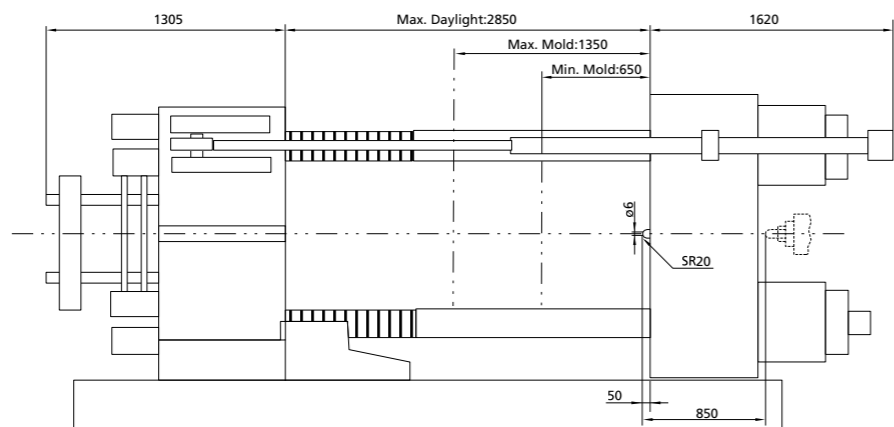
NOTE:
 *) with min. mold height / with max. mold height
 **) moving platen: 2/3 of max. mold weight

We reserve the right to make changes as a result of further technical advantages.

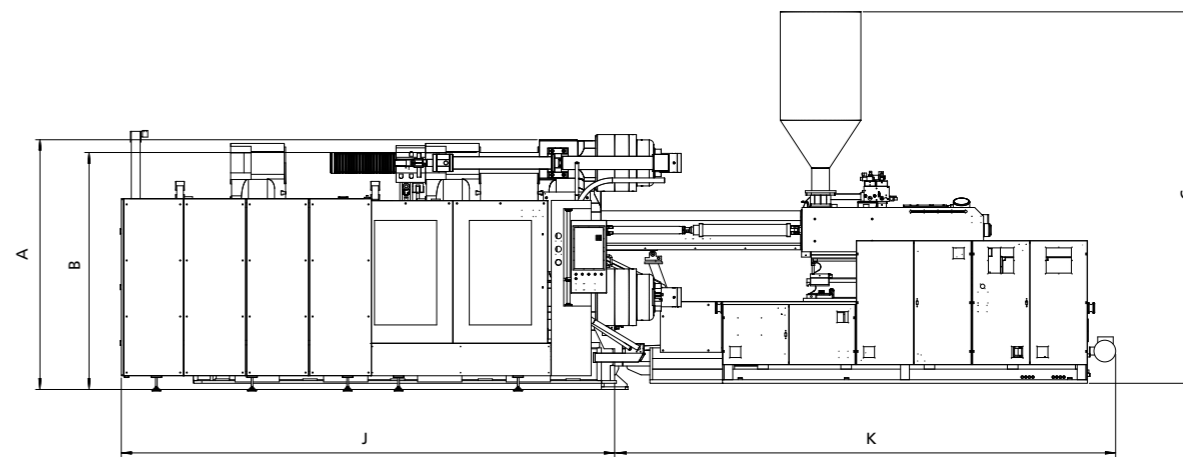
DIMENSIONS JU 13000 II

JUPITER II SERIES

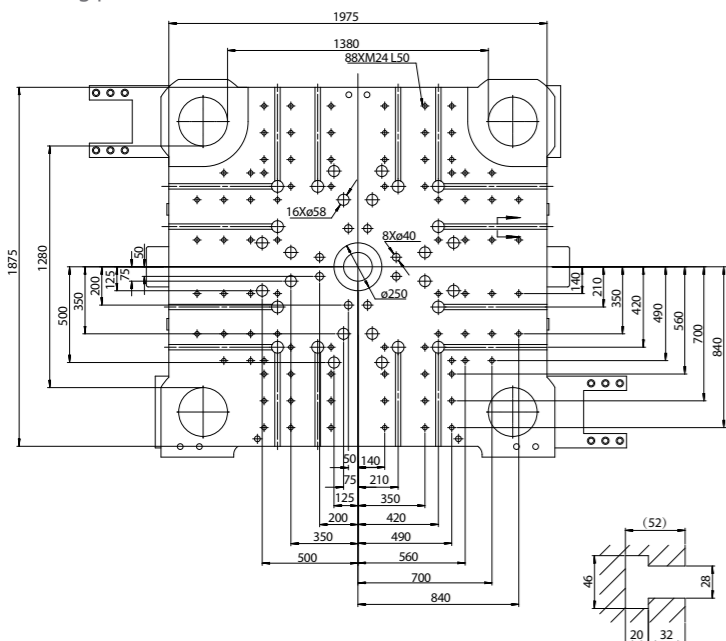
Clamping Unit



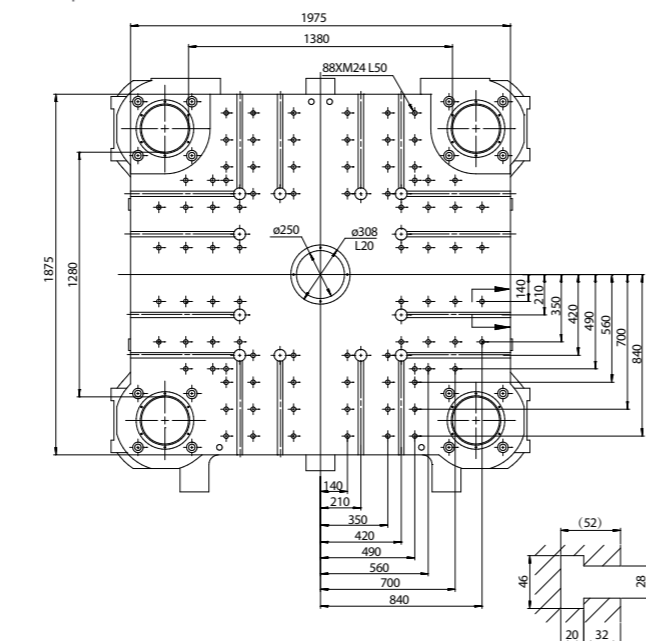
Front view



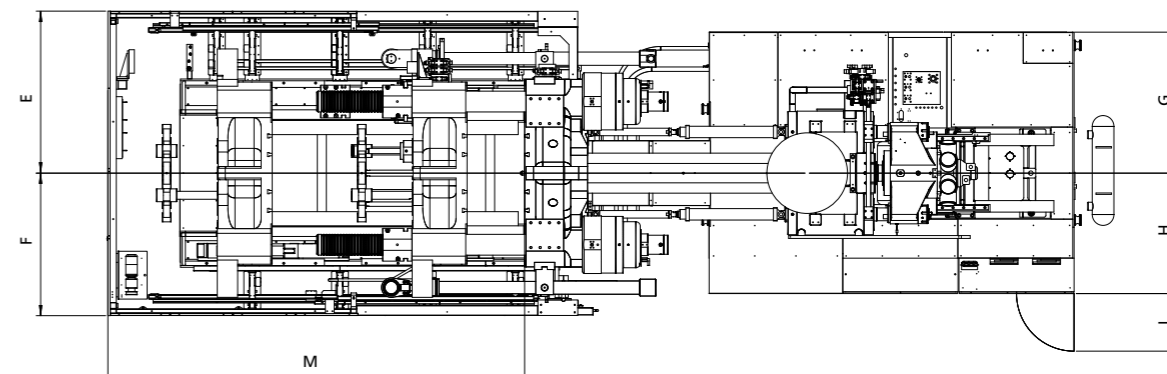
Platen dimensions Moving platen



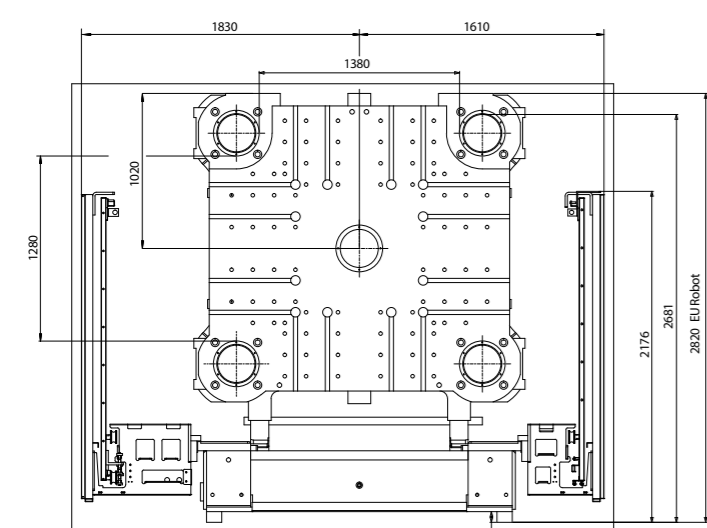
Platen dimensions Fixed platen



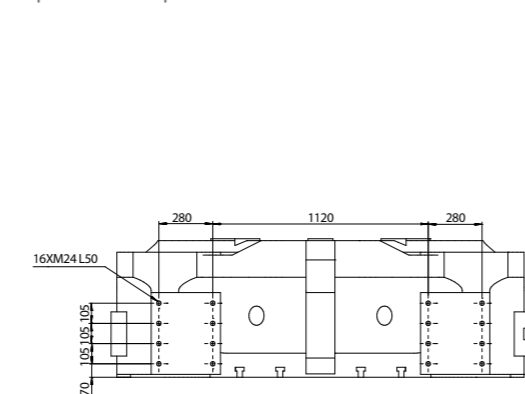
Top view



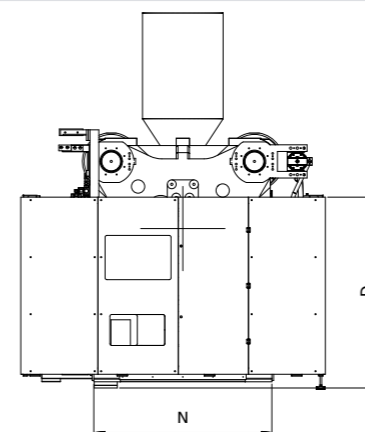
Robot Mechanical interface



Robot Top view fixed platen



Side view



Standard

INJECTION UNIT
DIMENSIONS (mm)

	A	B	C	D	E	F	G	H	I	J	K	M	N
6800	2820	2676	3018	2155	1830	1610	1191	1088	650	5570	4794	4705	2010
8400	2820	2676	3931	2155	1830	1610	1359	1178	650	5570	4928	4705	2010
10600	2820	2676	4325	2155	1830	1610	1592	1360	650	5570	5788	4705	2010
14600	2870	2726	4915	2655	1830	1610	1720	1410	650	5570	6168	4705	2010

We reserve the right to make changes as a result of further technical advantages.



SPECIFICATIONS
INJECTION UNIT

	6800				8400				STANDARD 10600				14600				
CLAMPING UNIT																	
Clamping force									14000							kN	Clamping force
Space between tie bars									1460 × 1360							mm	Space between tie bars
Max. mold height									1450							mm	Max. mold height
Min. mold height									700							mm	Min. mold height
Ejector stroke									400							mm	Ejector stroke
Ejector force									330							kN	Ejector force
Max. daylight									3050							mm	Max. daylight
Mold opening stroke *									2350 / 1600							mm	Mold opening stroke *
Max. mold weight **									27							t	Max. mold weight **
INJECTION UNIT																	
Screw diameter	A	B	C	D	A	B	C	D	A	B	C	D	A	B	C	mm	Screw diameter
Screw L /D ratio	24.4	22	20	18.3	24.2	22	20.2	18.6	26.2	24	22.2	20.6	24	22.3	20.8	L/D	Screw L /D ratio
Shot size (theoretical)	2990	3691	4467	5316	4006	4847	5768	6769	5227	6220	7300	8467	8362	9698	11133	cm ³	Shot size (theoretical)
Injection weight (PS)	2721	3359	4065	4838	3645	4410	5249	6160	4756	5661	6643	7705	7610	8825	10131	g	Injection weight (PS)
Injection rate	526	650	787	936	682	825	982	1153	806	960	1126	1306	1154	1338	1536	g/s	Injection rate
Injection pressure	235	190	157	132	220	182	153	130	204	171	146	126	174	150	131	Mpa	Injection pressure
Plasticizing rate (PS)	88.1	108	128.4	149.9	101	121	140	161	119	138	159	182	160	183	209	g/s	Plasticizing rate (PS)
Screw speed	0-133				0-115				0-102				0-97			rpm	Screw speed
OTHERS																	
Max. pump pressure	21				21				21				21			Mpa	Max. pump pressure
Pump motor power	55+22+7.5				55 + 37 + 7.5				75 + 37 + 7.5				110+37+7.5			kW	Pump motor power
Heating power	70.6				82.8				104				115.5			kW	Heating power
Machine dimensions (l x w x h)	11.3 × 3.6 × 3.1				11.5 × 3.6 × 4				11.6 × 3.6 × 4.4				12× 3.6 × 5			(l x w x h)	Machine dimensions
Machine weight	70				72				74				79			t	Machine weight
Hopper capacity	100				200				400				400			kg	Hopper capacity
Oil tank capacity	1070				1200				1200				1690			l	Oil tank capacity

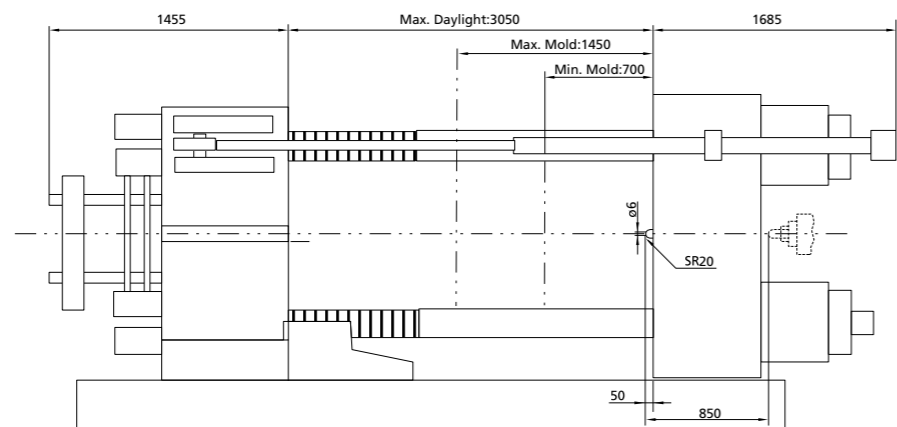
NOTE:
 *) with min. mold height / with max. mold height
 **) moving platen: 2/3 of max. mold weight

We reserve the right to make changes as a result of further technical advantages.

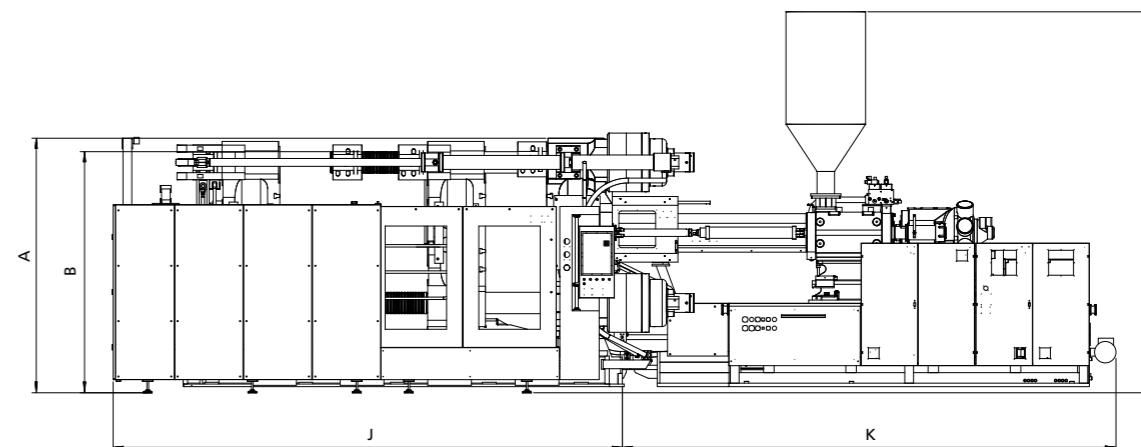
DIMENSIONS JU 14000 II

JUPITER II SERIES

Clamping Unit

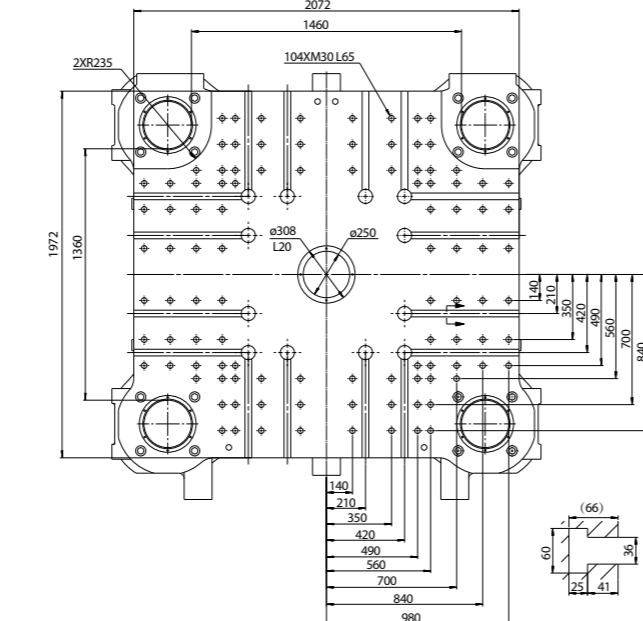
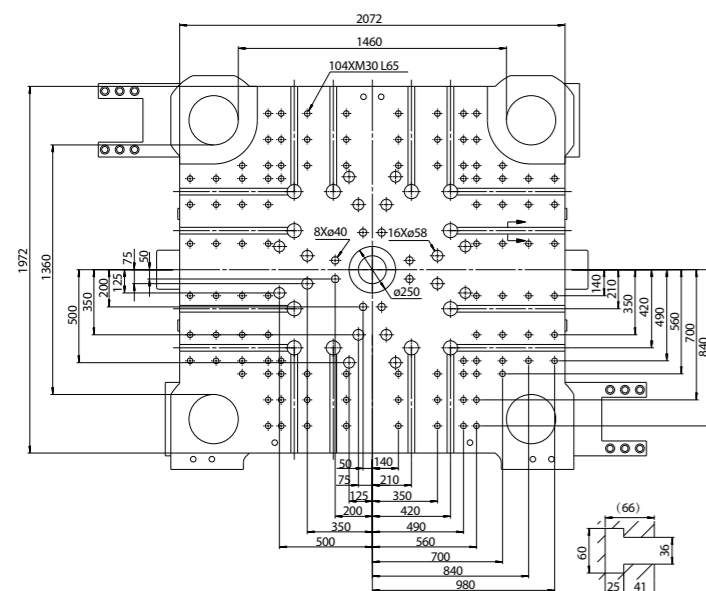


Front view

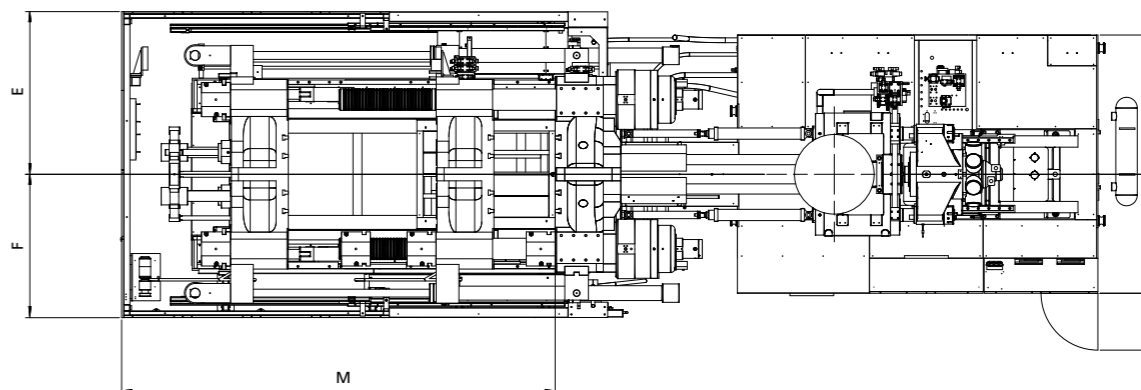


Platen dimensions Moving platen

Platen dimensions Fixed platen

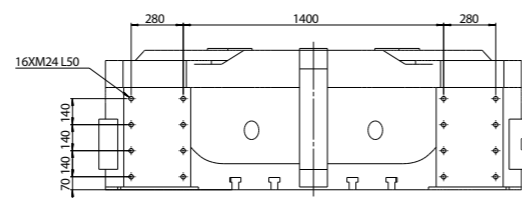
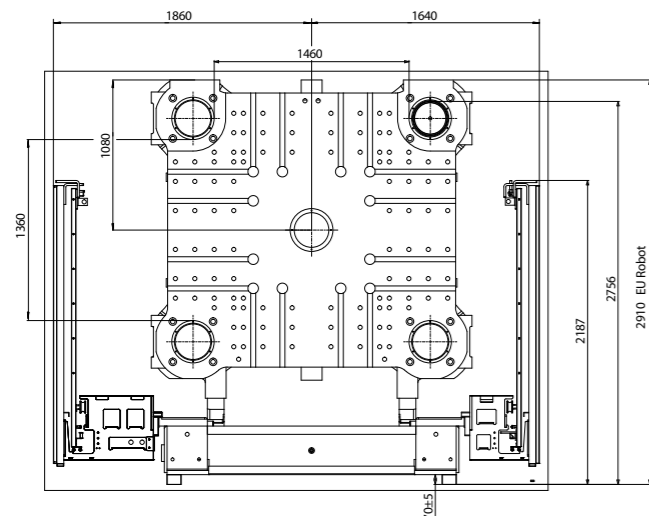


Top view

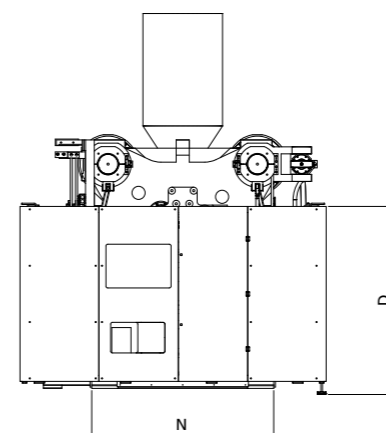


Robot Mechanical interface

Robot Top view fixed platen



Side view



■ Standard

INJECTION UNIT
DIMENSIONS (mm)

	A	B	C	D	E	F	G	H	I	J	K	M	N
6800	2910	2756	3048	2150	1860	1640	1191	1088	650	5820	5244	4955	2080
8400	2910	2756	3961	2150	1860	1640	1359	1178	650	5820	5378	4955	2080
10600	2910	2756	4355	2150	1860	1640	1592	1360	650	5820	5788	4955	2080
14600	2930	2956	4915	2350	1860	1640	1720	1410	650	5820	6168	4955	2080

We reserve the right to make changes as a result of further technical advantages.



SPECIFICATIONS
INJECTION UNIT

	6800				8400				10600				STANDARD 14600			19300					
CLAMPING UNIT																	CLAMPING UNIT				
Clamping force													16000					kN	Clamping force		
Space between tie bars													1550 × 1450					mm	Space between tie bars		
Max. mold height													1550					mm	Max. mold height		
Min. mold height													700					mm	Min. mold height		
Ejector stroke													400					mm	Ejector stroke		
Ejector force													330					kN	Ejector force		
Max. daylight													3250					mm	Max. daylight		
Mold opening stroke *													2550 / 1700					mm	Mold opening stroke *		
Max. mold weight **													33					t	Max. mold weight **		
INJECTION UNIT																	INJECTION UNIT				
Screw diameter	A	B	C	D	A	B	C	D	A	B	C	D	A	B	C	A	B	C	D	mm	Screw diameter
Screw L /D ratio	24.4	22	20	18.3	24.2	22	20.2	18.6	26.2	24	22.2	20.6	24	22.3	20.8	24	22.4	21	19.8	L/D	Screw L /D ratio
Shot size (theoretical)	2990	3691	4467	5316	4006	4847	5768	6769	5227	6220	7300	8467	8362	9698	11133	10468	12017	13672	15435	cm ³	Shot size (theoretical)
Injection weight (PS)	2721	3359	4065	4838	3645	4410	5249	6160	4756	5661	6643	7705	7610	8825	10131	9526	10935	12442	14046	g	Injection weight (PS)
Injection rate	526	650	787	936	682	825	982	1135	806	960	1126	1306	1154	1338	1536	1219	1399	1592	1797	g/s	Injection rate
Injection pressure	235	190	157	132	220	182	153	130	204	171	146	126	174	150	131	184	160	141	125	Mpa	Injection pressure
Plasticizing rate (PS)	88.1	108	128.4	149.9	101	121	140	161	119	138	159	182	160	183	209	153	174	194	220	g/s	Plasticizing rate (PS)
Screw speed	0-133				0-115				0-102				0-97			0-84				rpm	Screw speed
OTHERS																	OTHERS				
Max. pump pressure	21				21				21				21			21				Mpa	Max. pump pressure
Pump motor power	55+22+11				55+37+11				75+37+11				110 + 37 + 11			110 + 55 + 11				kW	Pump motor power
Heating power	70.6				82.8				104				115.5			133				kW	Heating power
Machine dimensions (l x w x h)	11.4 × 3.6 × 3.1				11.5 × 3.6 × 4.1				11.9 × 3.6 × 4.4				12.2 × 3.6 × 5.0			12.6 × 3.6 × 5.1				(l x w x h)	Machine dimensions
Machine weight	82				84				86				88			90				t	Machine weight
Hopper capacity	100				200				400				400			400				kg	Hopper capacity
Oil tank capacity	1070				1200				1200				1690			2090				l	Oil tank capacity

NOTE:
 *) with min. mold height / with max. mold height
 **) moving platen: 2/3 of max. mold weight

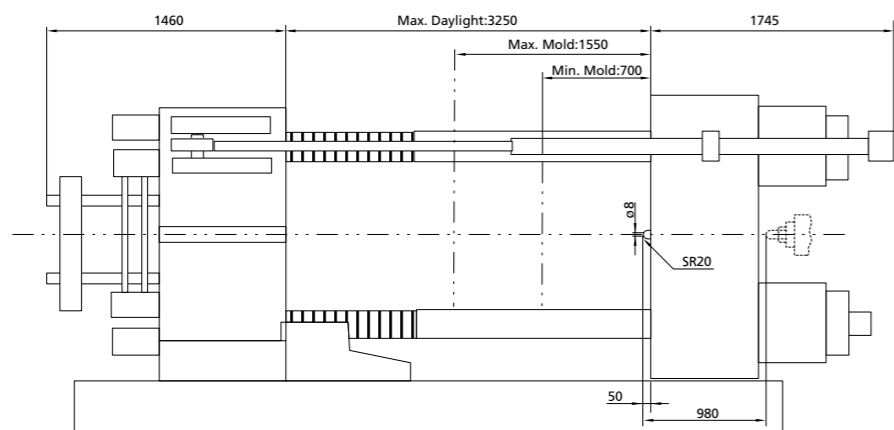
We reserve the right to make changes as a result of further technical advantages.



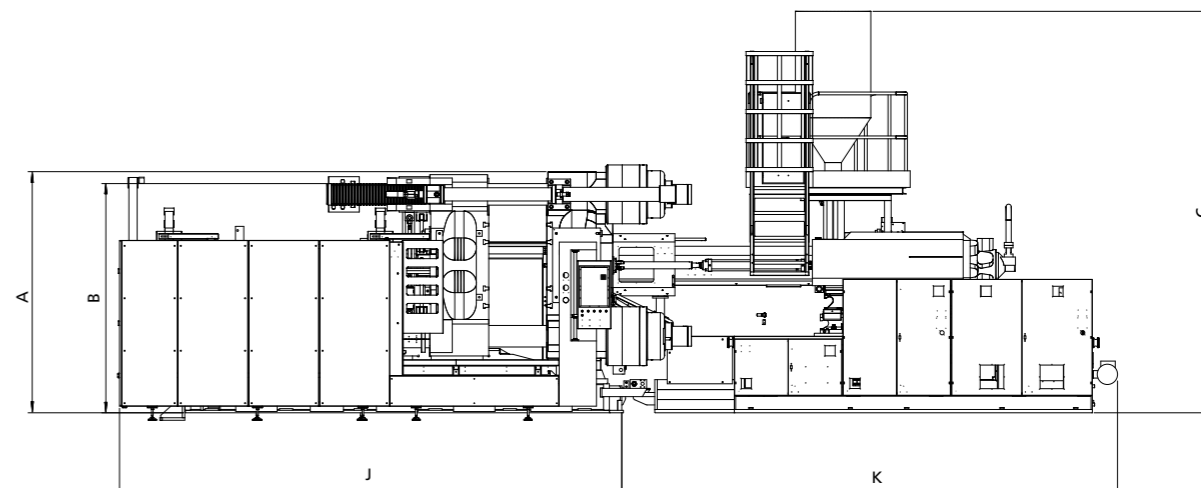
DIMENSIONS JU 16000 II

JUPITER II SERIES

Clamping Unit

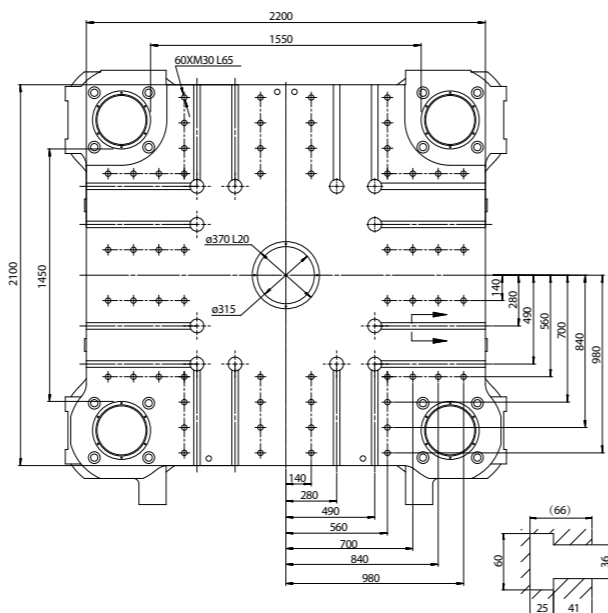
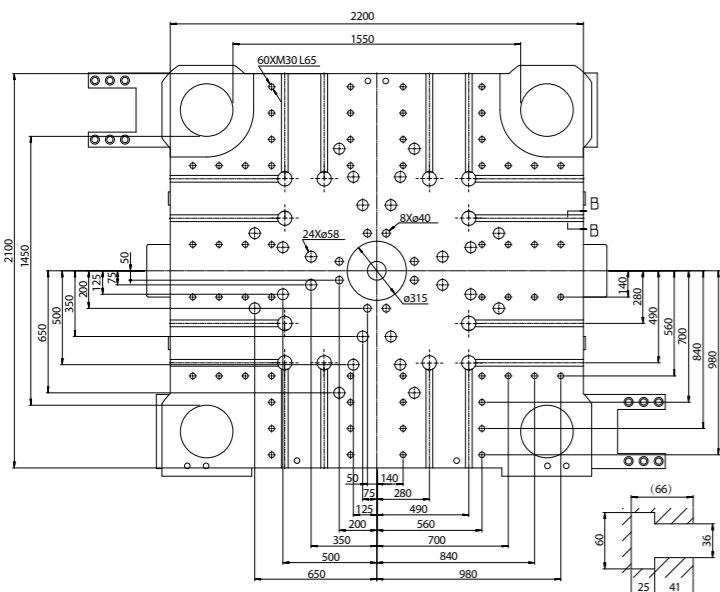


Front view

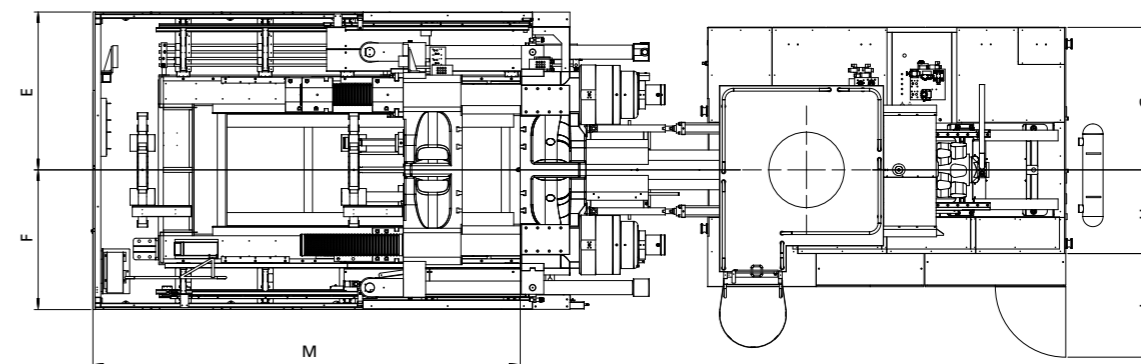


Platen dimensions Moving platen

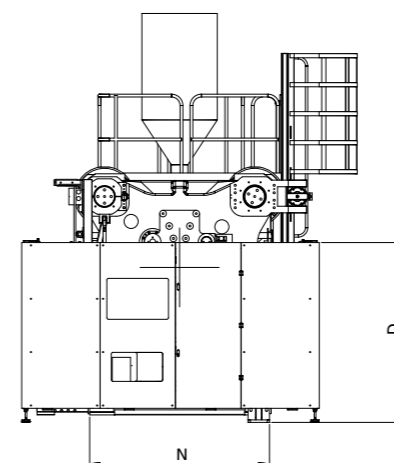
Platen dimensions Fixed platen



Top view

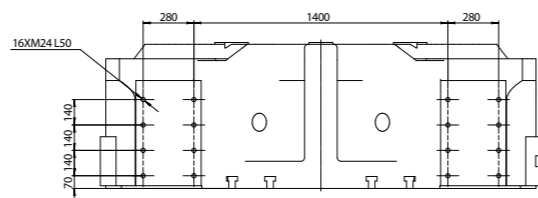
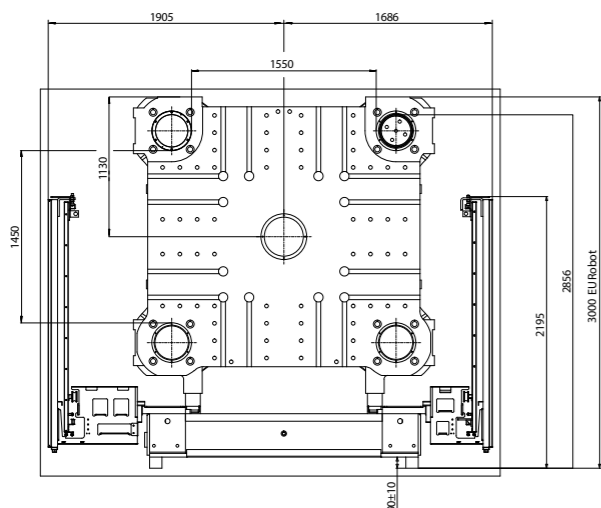


Side view



Robot Mechanical interface

Robot Top view fixed platen



■ Standard

INJECTION UNIT
DIMENSIONS (mm)

	A	B	C	D	E	F	G	H	I	J	K	M	N
6800	3000	2856	3088	2170	1905	1686	1191	1088	650	6060	5244	5156	2170
8400	3000	2856	4001	2170	1905	1686	1359	1178	650	6060	5378	5156	2170
10600	3000	2856	4395	2170	1905	1686	1592	1360	650	6060	5788	5156	2170
14600	3000	2856	4935	2170	1905	1686	1720	1410	650	6060	6128	5156	2170
19300	3200	3056	5055	2370	1905	1686	1910	1450	650	6060	6440	5156	2170

We reserve the right to make changes as a result of further technical advantages.



SPECIFICATIONS
INJECTION UNIT

	8400				10600				STANDARD 14600			19300				37000				
CLAMPING UNIT																				
Clamping force									18500									kN	Clamping force	
Space between tie bars									1650 × 1550									mm	Space between tie bars	
Max. mold height									1600									mm	Max. mold height	
Min. mold height									750									mm	Min. mold height	
Ejector stroke									450									mm	Ejector stroke	
Ejector force									450									kN	Ejector force	
Max. daylight									3300									mm	Max. daylight	
Mold opening stroke *									2550 / 1700									mm	Mold opening stroke *	
Max. mold weight **									40									t	Max. mold weight **	
INJECTION UNIT																				
Screw diameter	mm	A	B	C	D	A	B	C	D	A	B	C	A	B	C	D	37000	mm	Screw diameter	
Screw L /D ratio	L/D	24.2	22	20.2	18.6	26.2	24	22.2	20.6	24	22.3	20.8	24	22.4	21	19.8	21.6	L/D	Screw L /D ratio	
Shot size (theoretical)	cm ³	4006	4847	5768	6769	5227	6220	7300	8467	8362	9698	11133	10468	12017	13672	15435	26074	cm ³	Shot size (theoretical)	
Injection weight (PS)	g	3645	4410	5249	6160	4756	5661	6643	7705	7610	8825	10131	9526	10935	12442	14046	23727	g	Injection weight (PS)	
Injection rate	g/s	682	825	982	1135	806	960	1126	1306	1154	1338	1536	1219	1399	1592	1797	1807	g/s	Injection rate	
Injection pressure	Mpa	220	182	153	130	204	171	146	126	174	150	131	184	160	141	125	140	Mpa	Injection pressure	
Plasticizing rate (PS)	g/s	101	121	140	161	119	138	159	182	160	183	209	153	174	194	220	254	g/s	Plasticizing rate (PS)	
Screw speed	rpm	0-115				0-102				0-97			0-84				0-70		rpm	Screw speed
OTHERS																				
Max. pump pressure	Mpa	21				21				21			21				21		Mpa	Max. pump pressure
Pump motor power	kW	55+37+11				75+37+11				110 + 37 + 11			110 + 55 + 11				110 + 75 + 11		kW	Pump motor power
Heating power	kW	82.8				104				115.5			133				215.2		kW	Heating power
Machine dimensions (l x w x h)		11.8 × 3.8 × 3.9				12.2 × 3.8 × 4.6				12.6 × 3.8 × 5.1			12.8 × 3.8 × 5.3				14.5 × 3.8 × 5.5		(l x w x h)	Machine dimensions
Machine weight	t	94				96				98			100				112		t	Machine weight
Hopper capacity	kg	200				400				400			400				400		kg	Hopper capacity
Oil tank capacity	l	1200				1200				1690			2090				2740		l	Oil tank capacity

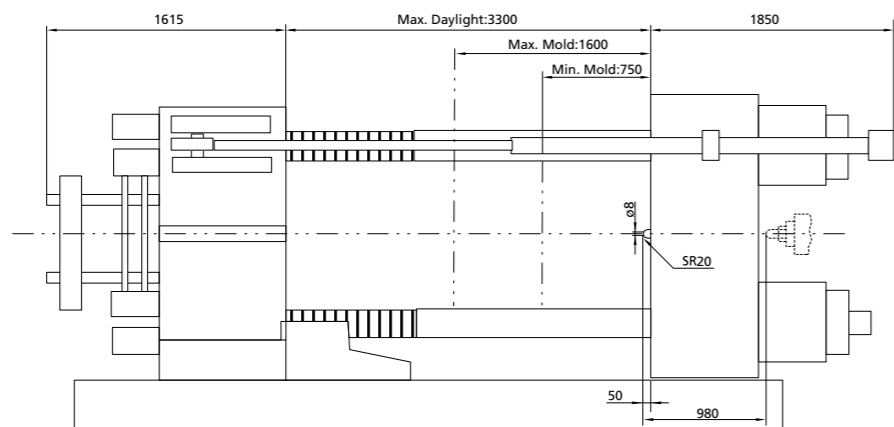
NOTE:
 *) with min. mold height / with max. mold height
 **) moving platen: 2/3 of max. mold weight

We reserve the right to make changes as a result of further technical advantages.

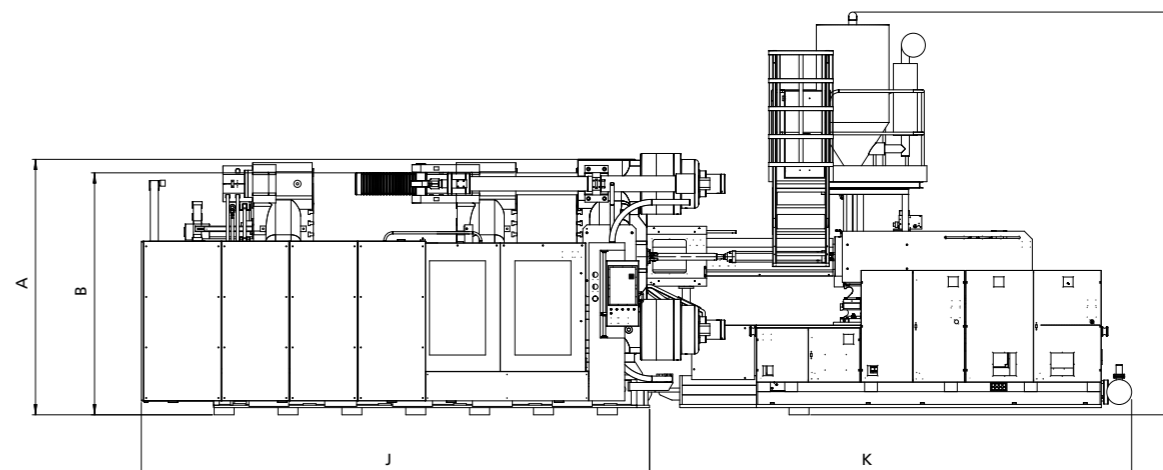
DIMENSIONS JU 18500 II

JUPITER II SERIES

Clamping Unit

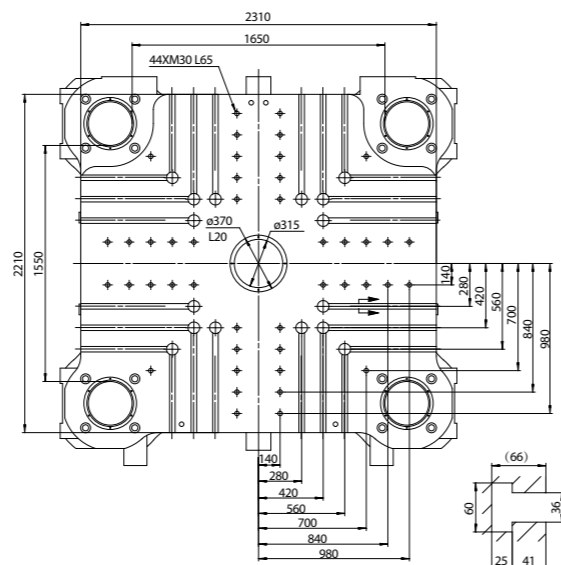
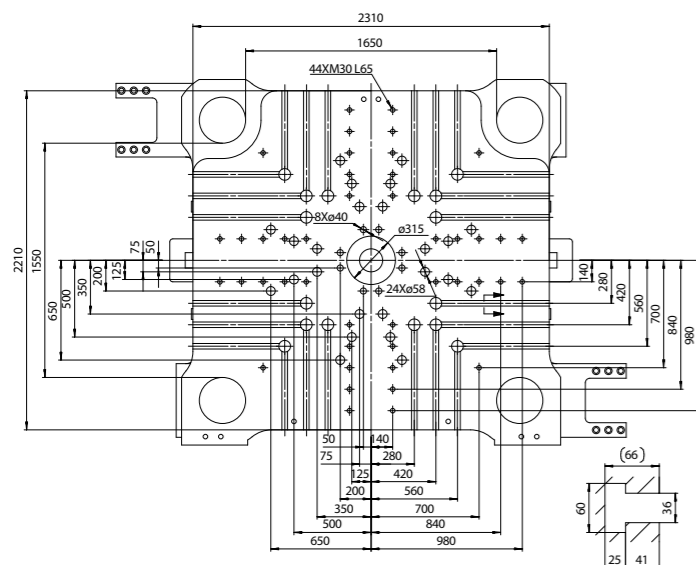


Front view

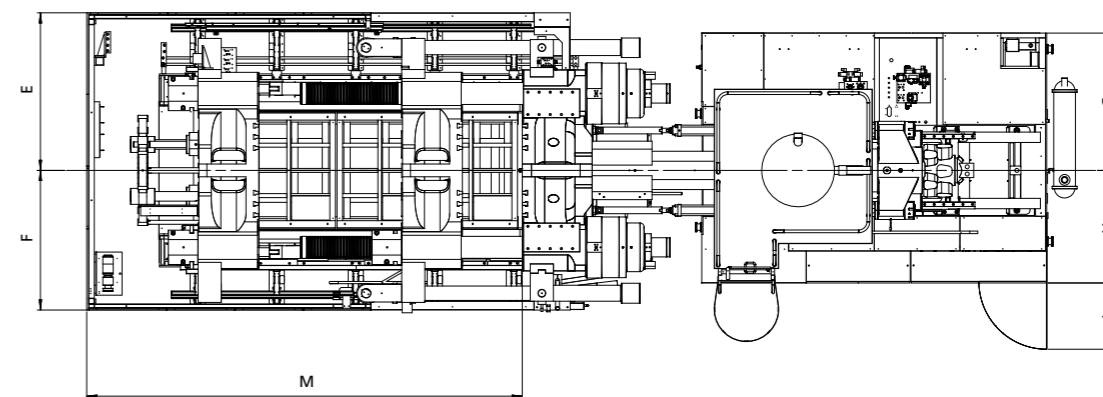


Platen dimensions Moving platen

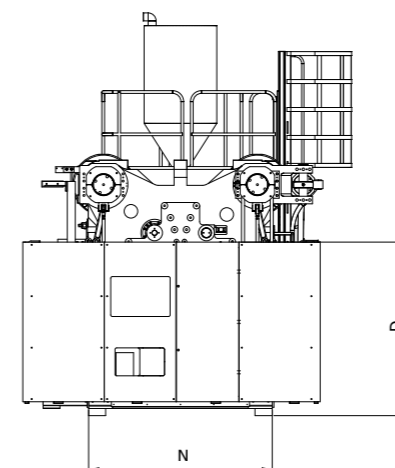
Platen dimensions Fixed platen



Top view

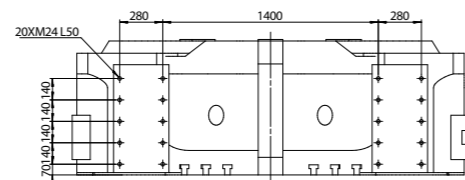
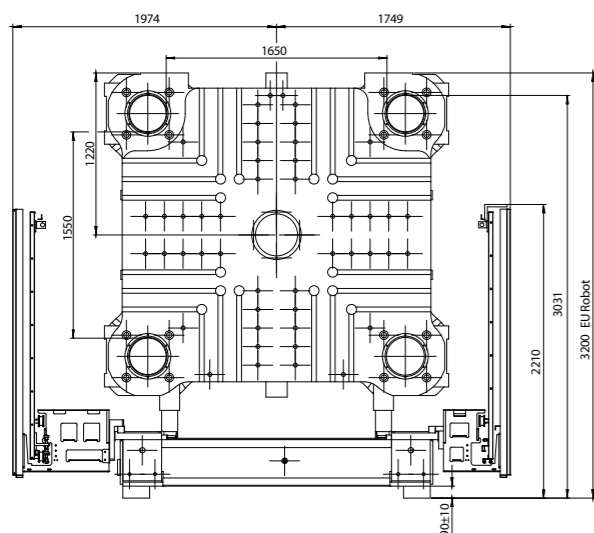


Side view



Robot Mechanical interface

Robot Top view fixed platen



■ Standard

INJECTION UNIT
DIMENSIONS (mm)

	A	B	C	D	E	F	G	H	I	J	K	M	N
8400	3200	3031	3943	2174	1974	1749	1359	1178	650	6345	5328	5455	2300
10600	3200	3031	4505	2174	1974	1749	1592	1360	650	6345	5738	5455	2300
14600	3200	3031	5045	2174	1974	1749	1720	1410	850	6345	6078	5455	2300
19300	3290	3121	5255	2174	1974	1749	1910	1450	850	6345	6405	5455	2300
37000	3420	3251	5440	2174	1974	1749	1935	1505	850	6345	8066	5455	2300

We reserve the right to make changes as a result of further technical advantages.

SPECIFICATIONS
INJECTION UNIT

	10600				14600			STANDARD 19300				37000	50000			
CLAMPING UNIT															CLAMPING UNIT	
Clamping force															kN	Clamping force
Space between tie bars															mm	Space between tie bars
Max. mold height															mm	Max. mold height
Min. mold height															mm	Min. mold height
Ejector stroke															mm	Ejector stroke
Ejector force															kN	Ejector force
Max. daylight															mm	Max. daylight
Mold opening stroke *															mm	Mold opening stroke *
Max. mold weight **															t	Max. mold weight **
INJECTION UNIT	A	B	C	D	A	B	C	A	B	C	D	37000	50000	INJECTION UNIT		
Screw diameter	mm	110	120	130	140	130	140	150	140	150	160	170	185	200	mm	Screw diameter
Screw L /D ratio	L/D	26.2	24	22.2	20.6	24	22.3	20.8	24	22.4	21	19.8	21.6	20	L/D	Screw L /D ratio
Shot size (theoretical)	cm ³	5227	6220	7300	8467	8362	9698	11133	10468	12017	13672	15435	26074	35186	cm ³	Shot size (theoretical)
Injection weight (PS)	g	4756	5661	6643	7705	7610	8825	10131	9526	10935	12442	14046	23727	32019	g	Injection weight (PS)
Injection rate	g/s	806	960	1126	1306	1154	1338	1536	1219	1399	1592	1797	1807	2153	g/s	Injection rate
Injection pressure	Mpa	204	171	146	126	174	150	131	184	160	141	125	140	141	Mpa	Injection pressure
Plasticizing rate (PS)	g/s	119	138	159	182	160	183	209	153	174	194	220	254	253	g/s	Plasticizing rate (PS)
Screw speed	rpm	0-102				0-97			0-84				0-70	0-60	rpm	Screw speed
OTHERS															OTHERS	
Max. pump pressure	Mpa	21				21			21				21	21	Mpa	Max. pump pressure
Pump motor power	kW	75+37+11				110 + 37 + 11			110 + 55 + 11				110 + 75 + 11	110 + 55 + 55 + 11	kW	Pump motor power
Heating power	kW	104				115.5			133				215.2	215.2	kW	Heating power
Machine dimensions (l x w x h)		13 x 4.5 x 4.6				13 x 4.5 x 5.2			13 x 4.5 x 5.3				14.6 x 4.5 x 5.5	14.9 x 4.5 x 5.5	(l x w x h)	Machine dimensions
Machine weight	t	111				113			115				123	130	t	Machine weight
Hopper capacity	kg	400				400			400				400	400	kg	Hopper capacity
Oil tank capacity	l	1200				1690			2090				2740	3000	l	Oil tank capacity

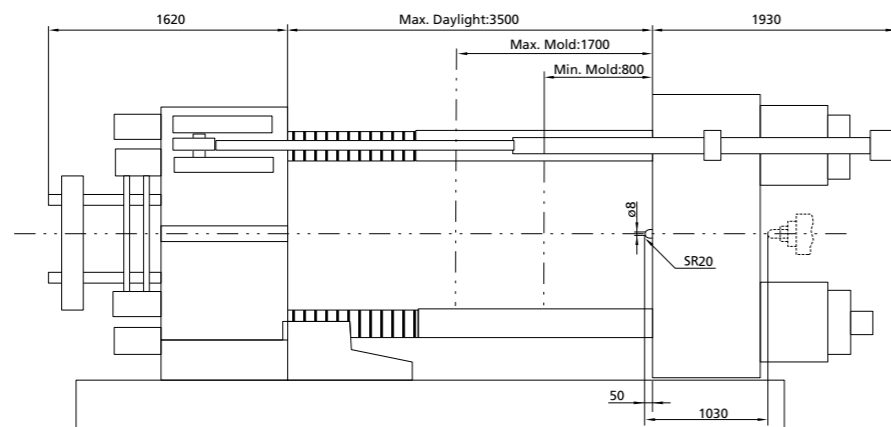
NOTE:
 *) with min. mold height / with max. mold height
 **) moving platen: 2/3 of max. mold weight

We reserve the right to make changes as a result of further technical advantages.

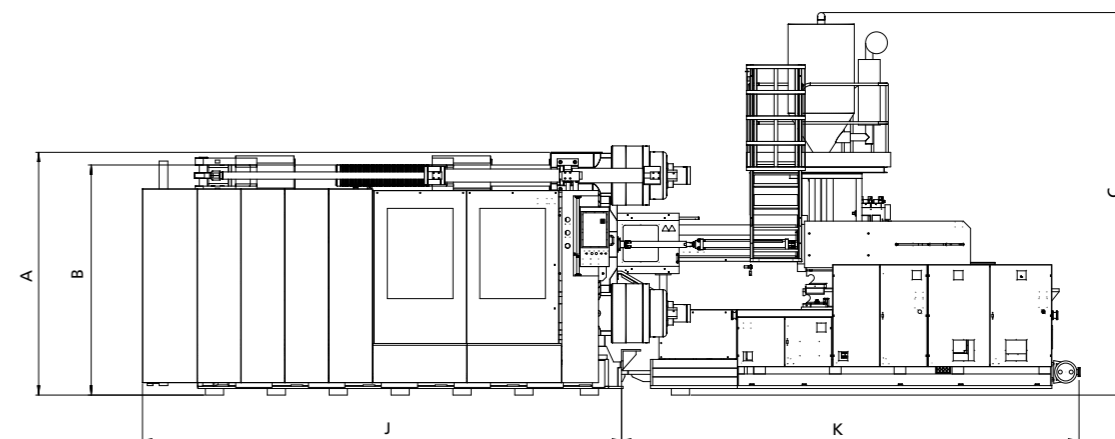
DIMENSIONS JU 21000 II

JUPITER II SERIES

Clamping Unit

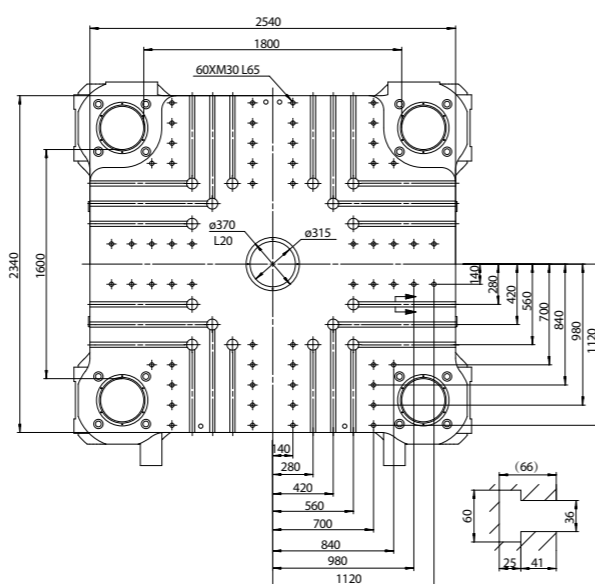
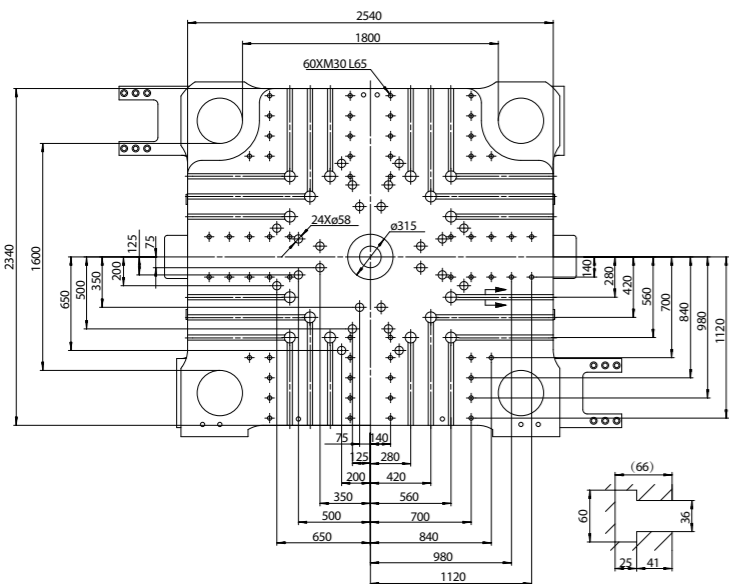


Front view

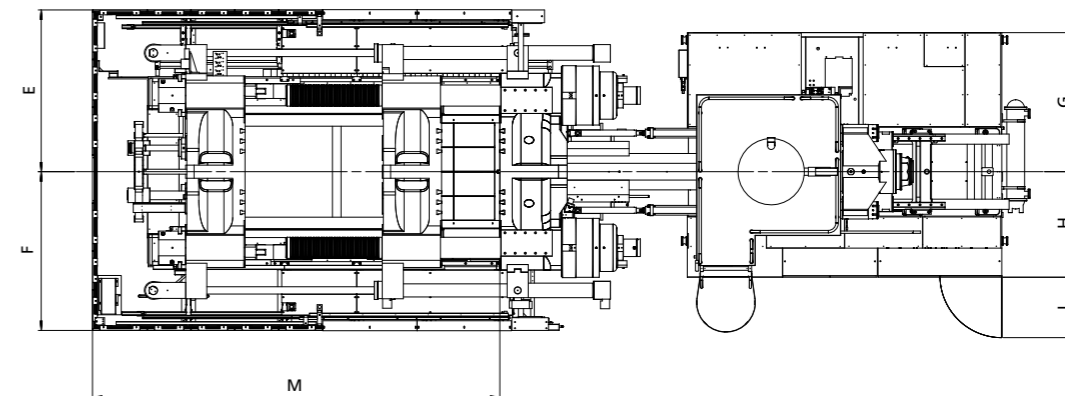


Platen dimensions Moving platen

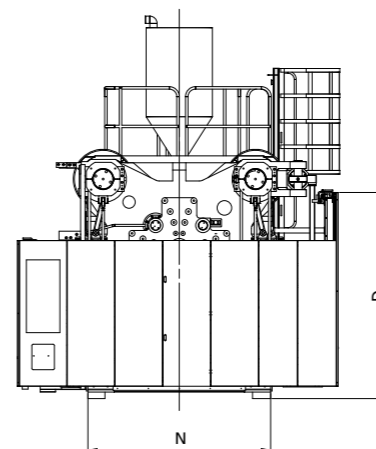
Platen dimensions Fixed platen



Top view

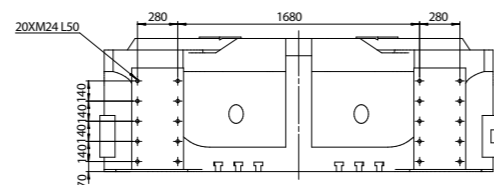
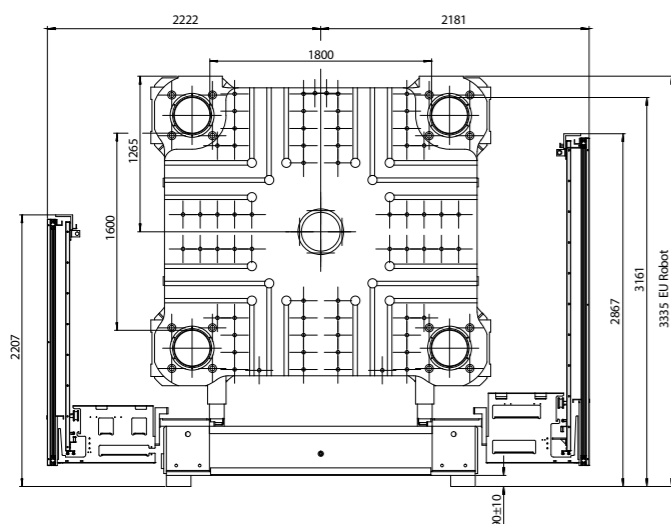


Side view



Robot Mechanical interface

Robot Top view fixed platen



■ Standard

INJECTION UNIT
DIMENSIONS (mm)

	A	B	C	D	E	F	G	H	I	J	K	M	N
10600	3335	3164	4595	2832	2222	2181	1592	1360	650	6580	6310	5595	2510
14600	3335	3164	5135	2832	2222	2181	1720	1410	850	6580	6310	5595	2510
19300	3335	3164	5255	2832	2222	2181	1910	1450	850	6580	6310	5595	2510
37000	3465	3294	5440	2832	2222	2181	1935	1505	850	6580	7950	5595	2510
50000	3575	3404	5275	2832	2222	2181	1960	1520	850	6580	8255	5595	2510



SPECIFICATIONS
INJECTION UNIT

	14600			19300				STANDARD 37000	50000	62000		
CLAMPING UNIT												
Clamping force	kN						24000			kN	Clamping force	
Space between tie bars	mm						1900x1700			mm	Space between tie bars	
Max. mold height	mm						1800			mm	Max. mold height	
Min. mold height	mm						800			mm	Min. mold height	
Ejector stroke	mm						500			mm	Ejector stroke	
Ejector force	kN						450			kN	Ejector force	
Max. daylight	mm						3700			mm	Max. daylight	
Mold opening stroke *	mm						2900/1900			mm	Mold opening stroke *	
Max. mold weight **	t						59			t	Max. mold weight **	
INJECTION UNIT												
		A	B	C	A	B	C	D	37000	50000	62000	
Screw diameter	mm	130	140	150	140	150	160	170	185	200	220	mm
Screw L /D ratio	L/D	24	22.3	20.8	24	22.4	21	19.8	21.6	20	20.5	L/D
Shot size (theoretical)	cm ³	8362	9698	11133	10468	12017	13672	15435	26074	35186	45616	cm ³
Injection weight (PS)	g	7610	8825	10131	9526	10935	12442	14046	23727	32019	41510	g
Injection rate	g/s	1154	1338	1536	1219	1399	1592	1797	1807	2153	2247	g/s
Injection pressure	Mpa	174	150	131	184	160	141	125	140	141	135	Mpa
Plasticizing rate (PS)	g/s	160	183	209	153	174	194	220	254	253	264	g/s
Screw speed	rpm	0-97			0-84				0-70	0-60	0-50	rpm
OTHERS												
Max. pump pressure	Mpa	21			21				21	21	21	Mpa
Pump motor power	kW	110 + 37 + 11			110 + 55 + 11				110 + 75 + 11	110 + 55 + 55 + 11	110 + 55 + 55 + 11	kW
Heating power	kW	115.5			133				215.2	215.2	232.6	kW
Machine dimensions (l x w x h)		13.5 x 4.7 x 5.3			13.5 x 4.7 x 5.4				14.6 x 4.7 x 5.5	14.9 x 4.7 x 5.3	16.1 x 4.6 x 5.4	(l x w x h)
Machine weight	t	139			141				143	150	155	t
Hopper capacity	kg	400			400				400	400	400	kg
Oil tank capacity	l	1690			2090				2740	3000	3070	l

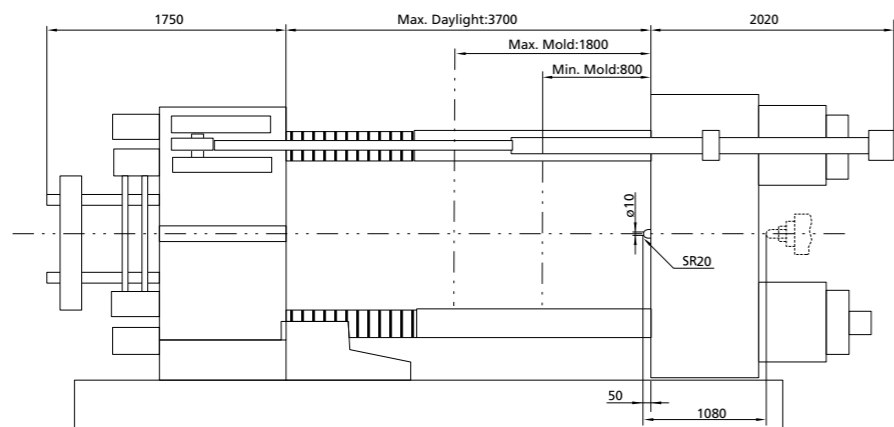
NOTE:
 *) with min. mold height / with max. mold height
 **) moving platen: 2/3 of max. mold weight

We reserve the right to make changes as a result of further technical advantages.

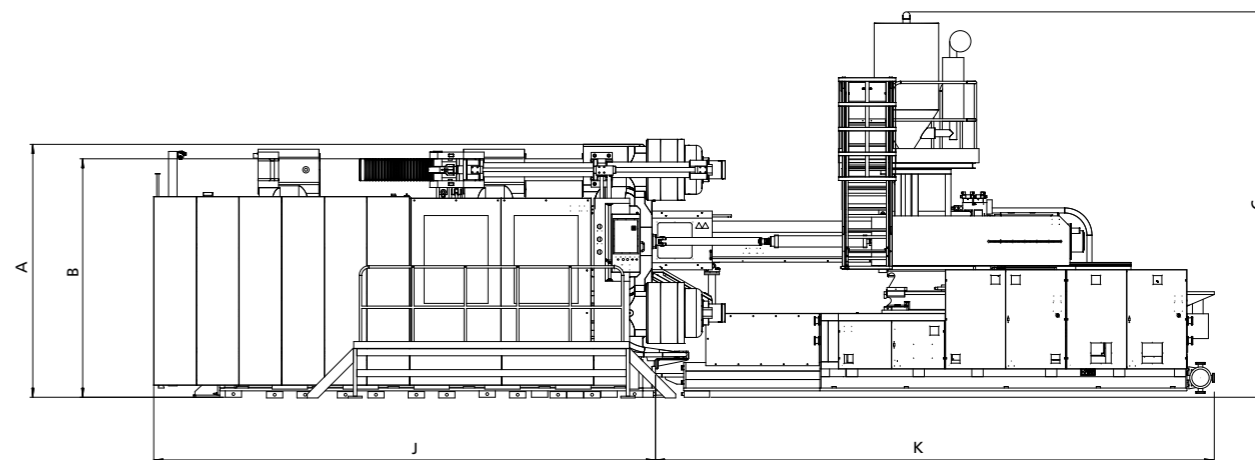
DIMENSIONS JU 24000 II

JUPITER II SERIES

Clamping Unit

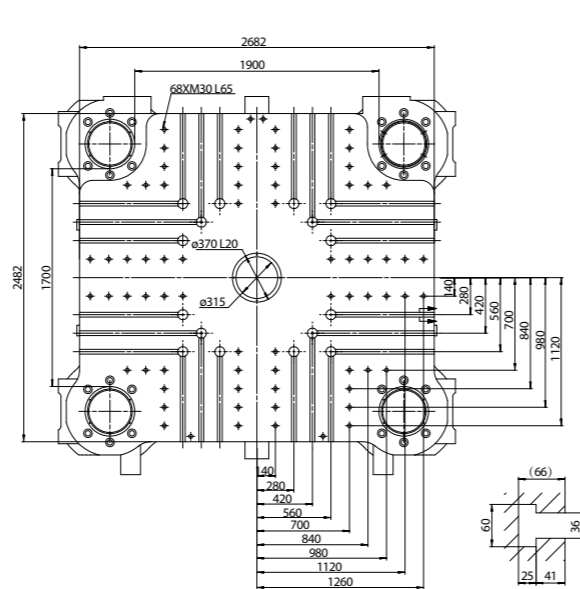
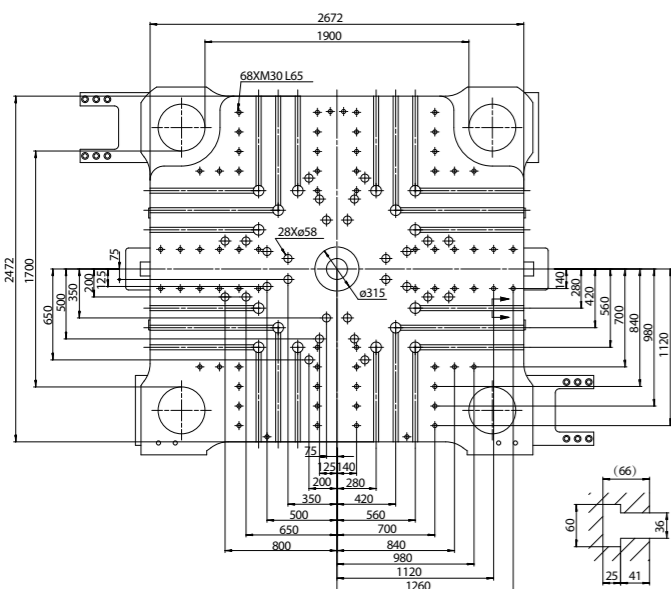


Front view

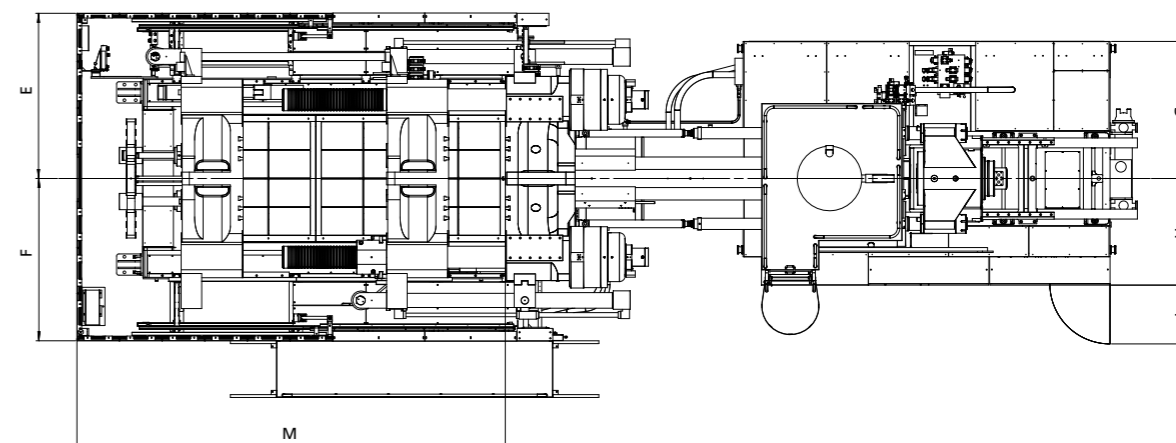


Platen dimensions Moving platen

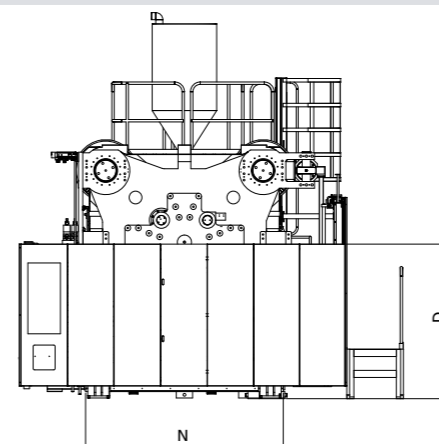
Platen dimensions Fixed platen



Top view

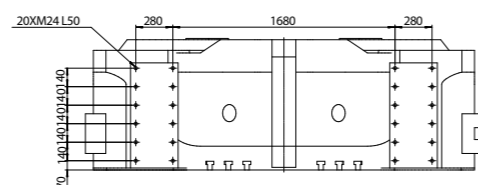
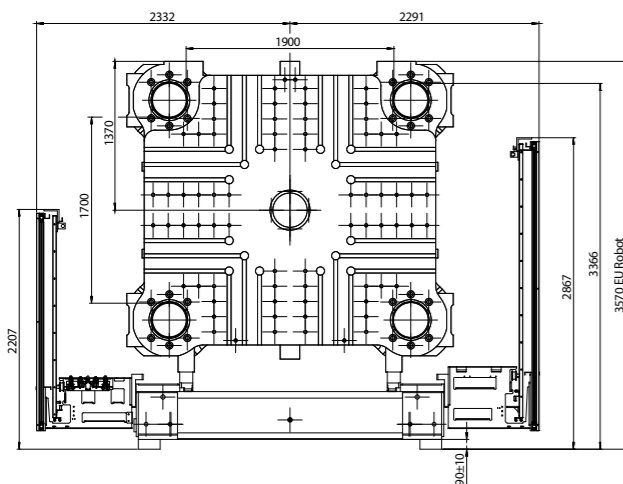


Side view



Robot Mechanical interface

Robot Top view fixed platen



■ Standard

	A	B	C	D	E	F	G	H	I	J	K	M	N
14600	3570	3366	5265	2182	2332	2291	1720	1410	850	7081	6310	6046	2790
19300	3570	3366	5385	2182	2332	2291	1910	1450	850	7081	6310	6046	2790
37000	3570	3366	5440	2182	2332	2291	1935	1505	850	7081	7901	6046	2790
50000	3680	3476	5275	2182	2332	2291	1960	1520	850	7081	8206	6046	2790
62000	3840	3636	5436	2182	2332	2291	1960	1520	850	7081	8775	6046	2790

INJECTION UNIT
DIMENSIONS (mm)



SPECIFICATIONS
INJECTION UNIT

	19300				37000	STANDARD 50000	62000	88000	
CLAMPING UNIT									
Clamping force						28000			kN
Space between tie bars						2000 × 1800			mm
Max. mold height						1900			mm
Min. mold height						900			mm
Ejector stroke						500			mm
Ejector force						450			kN
Max. daylight						4100			mm
Mold opening stroke *						3200 / 2200			mm
Max. mold weight **						66			t
INJECTION UNIT									
	A	B	C	D	37000	50000	62000	88000	
Screw diameter	140	150	160	170	185	200	220	240	mm
Screw L /D ratio	24	22.4	21	19.8	21.6	20	20.5	22	L/D
Shot size (theoretical)	10468	12017	13672	15435	26074	35186	45616	56549	cm ³
Injection weight (PS)	9526	10935	12442	14046	23727	32019	41510	51459	g
Injection rate	1219	1399	1592	1797	1807	2153	2247	2882	g/s
Injection pressure	184	160	141	125	140	141	135	156	Mpa
Plasticizing rate (PS)	153	174	194	220	254	253	264	285	g/s
Screw speed	0-84				0-70	0-60	0-50	0-45	rpm
OTHERS									
Max. pump pressure	21				21	21	21	21	Mpa
Pump motor power	110 + 55 + 11				110 + 75 + 11	110 + 55 + 55 + 11	110 + 55 + 55 + 11	110 + 110 + 55 + 55 + 11	kW
Heating power	133				215.2	215.2	232.6	289.7	kW
Machine dimensions (l x w x h)	14 × 4.7 × 5.4				15.6 × 4.7 × 5.5	15.9 × 4.7 × 5.5	16.5 × 4.7 × 5.5	18 × 4.7 × 6.1	(l x w x h)
Machine weight	161				163	165	172	185	t
Hopper capacity	400				400	400	400	600	kg
Oil tank capacity	2090				2740	3000	3070	4530	l

NOTE:
 *) with min. mold height / with max. mold height
 **) moving platen: 2/3 of max. mold weight

We reserve the right to make changes as a result of further technical advantages.



SPECIFICATIONS
INJECTION UNIT

	37000	50000	62000	STANDARD 88000	STANDARD 106000	
CLAMPING UNIT						
Clamping force				40000	40000	kN
Space between tie bars				2400 × 2000	2400 × 2000	mm
Max. mold height				2100	2100	mm
Min. mold height				1000	1000	mm
Ejector stroke				550	550	mm
Ejector force				580	580	kN
Max. daylight				4460	4460	mm
Mold opening stroke *				3460 / 2360	3460 / 2360	mm
Max. mold weight **				86	86	t
INJECTION UNIT						
Screw diameter	185	200	220	240	260	mm
Screw L /D ratio	21.6	20	20.5	22	20.3	L/D
Shot size (theoretical)	26074	35186	45616	56549	80170	cm ³
Injection weight (PS)	23727	32019	41510	51459	72955	g
Injection rate	1807	2153	2247	2882	3382	g/s
Injection pressure	140	141	135	156	133	Mpa
Plasticizing rate (PS)	254	253	264	285	297	g/s
Screw speed	0-70	0-60	0-50	0-45	0-40	rpm
OTHERS						
Max. pump pressure	21	21	21	21	21	Mpa
Pump motor power	110 + 75 + 11	110 + 55 + 55 + 11	110 + 55 + 55 + 11	110 + 110 + 55 + 55 + 11	110 + 110 + 55 + 55 + 11	kW
Heating power	215.2	215.2	232.6	289.7	289.7	kW
Machine dimensions (l x w x h)	16.5 × 5.4 × 5.7	16.8 × 5.4 × 5.7	17.4 × 5.4 × 5.7	19.2 × 5.4 × 6.1	19.3 × 5.4 × 5.5	(l x w x h)
Machine weight	242	244	244	248	255	t
Hopper capacity	400	400	400	600	600	kg
Oil tank capacity	2740	3000	3070	4530	4530	l

NOTE:
 *) with min. mold height / with max. mold height
 **) moving platen: 2/3 of max. mold weight

We reserve the right to make changes as a result of further technical advantages.

