

ZHAFIR PLASTICS MACHINERY GmbH

Jubatus-Allee 8-10
92263 Ebermannsdorf
Germany
Tel. +49-9438-9412-0
Fax. +49-9438-9412-150
E-Mail: contact@zhafir.com
www.zhafir.com

NINGBO ZHAFIR PLASTICS MACHINERY CO., LTD

No. 98 Guanhai Road, Chunxiao, Beilun, Ningbo, China 315800
Tel. +86-574-86182986
Fax. +86-574-86182977
E-Mail: contact@mail.zhafir.cn
www.zhafir.cn

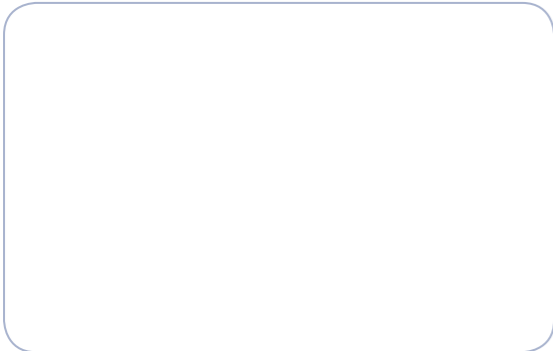
Zhafir Zeres Series



ZERES

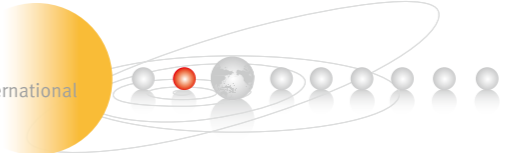
Specifications / International
400-3600kN

Zhafir Partner:



ZE-20180730-IV

A Member of Haitian International



We Extend Advantage.

Technical data ZE400

CLAMPING UNIT

		ZE400	
Clamping force	kN	400	
Toggle stroke	mm	235	
Min. mold height	mm	150	
Max. mold height	mm	320	
Max. mold opening stroke	mm	555	
Space between tie bars HxV	mm	320x280	
Min. mold dimension	mm	205x180	
Ejector stroke	mm	60	
Ejector force	kN (tf)	9.8(1.0)	
Mold platen dimension HxV	mm	460x440	

		50		80		
Screw diameter	mm	16	19	19	22	26
Screw L/D ratio	L/D	21	20	20	20	17
Injection volume (theoretical) cm ³		12	17	21	36	50
Injection weight (PS)	g	11	15.5	19.1	32.8	45.5
Screw speed	rpm	400		400		
Plasticizing capacity (PS)	g/s	2.5	3.8	3.8	6.0	8.8
Nozzle contact force	kN (tf)	9.8(1.0)		9.8(1.0)		
Heating power	kW	4.3	4.6	4.4	5.6	5.6
INJECTION UNIT		50		80		
Injection speed	mm/s	200		200		
Injection rate (PS)	g/s	36	50	50	68	96
Injection pressure	Mpa	280	260	260	220	157
	bar	2800	2600	2600	2200	1570
Holding pressure	Mpa	234	198	208	175	125
	bar	2340	1980	2080	1750	1250
INJECTION UNIT		50h		80h		
Injection speed	mm/s	350		350		
Injection rate (PS)	g/s	64	90	90	121	169
Injection pressure	Mpa	280	260	260	220	157
	bar	2800	2600	2600	2200	1570
Holding pressure	Mpa	234	198	208	175	125
	bar	2340	1980	2080	1750	1250

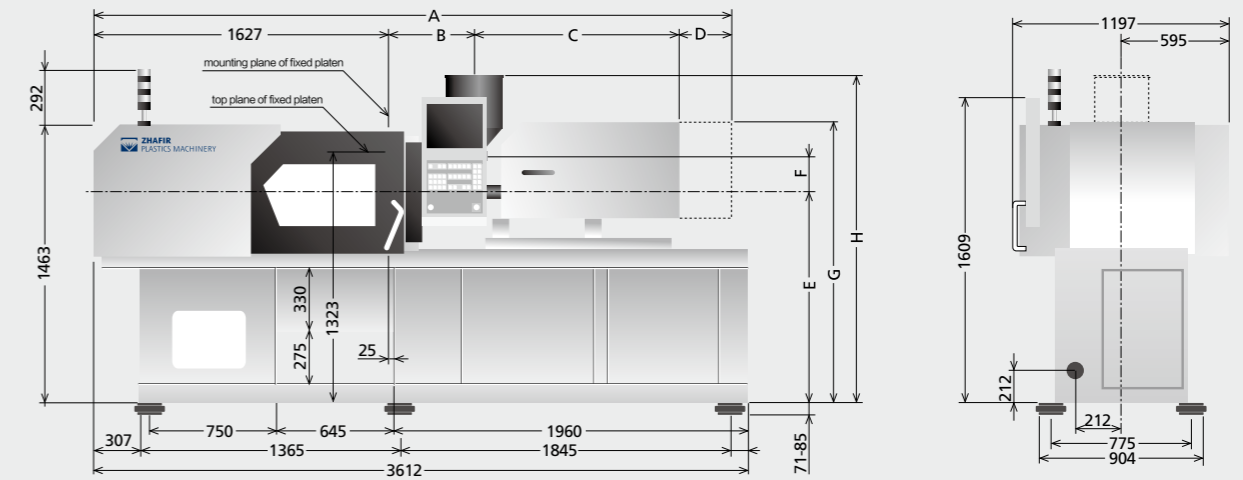
OTHERS

Connection power	kW/A	50:8/13 50h:12/20	80:10/17 80h:15/26
Pressure	Mpa	14	14
Flow	L/min	23	23
Oil tank	L	45	45
Hopper capacity	L	15	15
Machine dimension	m	3.61x1.2x1.75	3.61x1.2x1.75
Machine weight	t	2.5	2.5

We reserve the right to make changes as a result of further technical advantages.

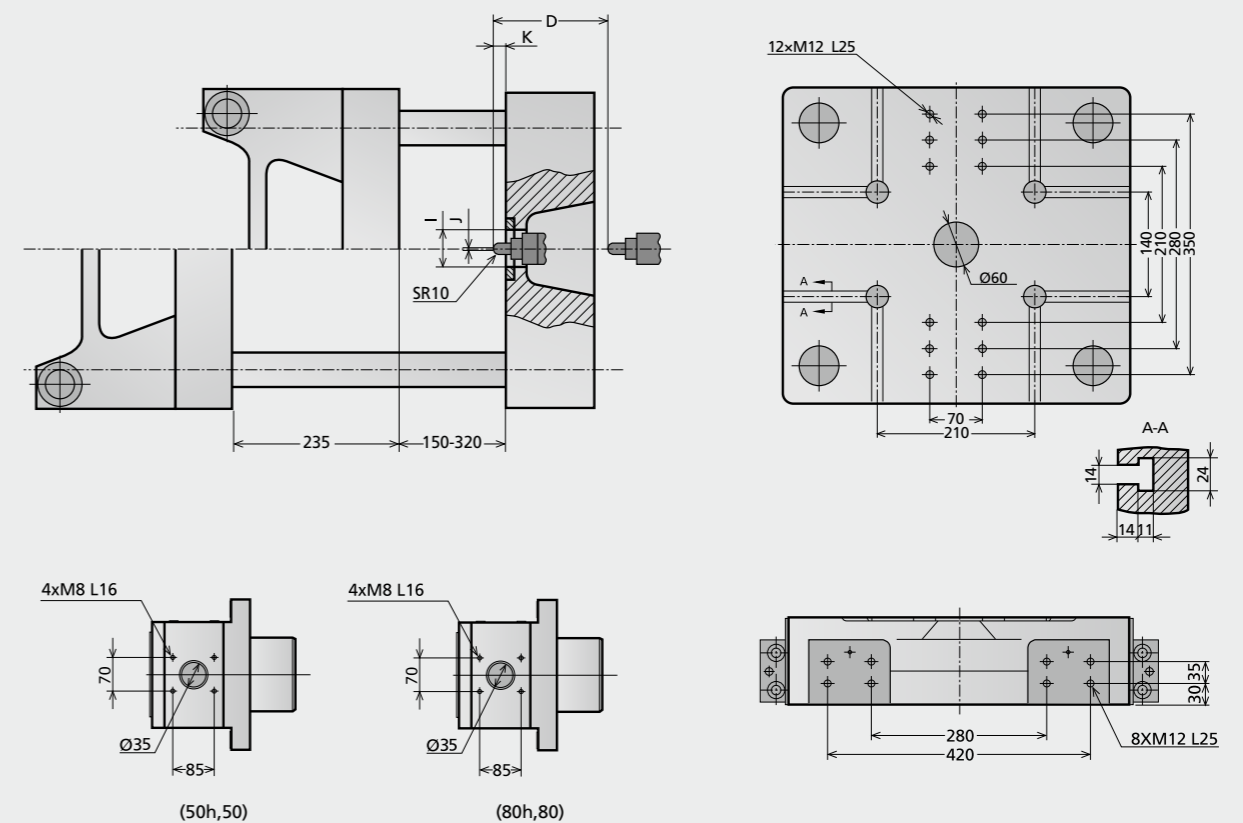
Machine dimensions ZE400

unit: mm



Platen dimensions ZE400

unit: mm



	A	B	C	D	E	F	G	H	I	J	K
80h,80	3521	473	1130	290	1117	183	1481	1724	Ø100	Ø2.2	50
50h,50	2423	421	1082	290	1117	183	1481	1724	Ø100	Ø2.2	45

Technical data ZE600

CLAMPING UNIT

		ZE600
Clamping force	kN	600
Toggle stroke	mm	270
Min. mold height	mm	150
Max. mold height	mm	370
Max. mold opening stroke	mm	640
Space between tie bars HxV	mm	370x320
Min. mold dimension	mm	240x205
Ejector stroke	mm	70
Ejector force	kN (tf)	19.6(2.0)
Mold platen dimension HxV	mm	545x505

		A	B	C	A	B	C
Screw diameter	mm	19	22	26	22	26	30
Screw L/D ratio	L/D	20	20	17	20	20	17.4
Injection volume (theoretical) cm ³		21	36	50	36	58	78
Injection weight (PS)	g	19.1	32.8	45.5	33	52	70
Screw speed	rpm		400			400	
Plasticizing capacity (PS)	g/s	3.8	6.0	8.8	6.0	8.8	13
Nozzle contact force	kN (tf)		14.7(1.5)			14.7(1.5)	
Heating power	kW	4.4	5.6	5.6	6.0	7.8	7.8
INJECTION UNIT			80			120	
Injection speed	mm/s		200			200	
Injection rate (PS)	g/s	50	68	96	69	96	128
Injection pressure	Mpa	260	220	157	280	220	165
	bar	2600	2200	1570	2800	2200	1650
Holding pressure	Mpa	208	175	125	220	160	120
	bar	2080	1750	1250	2200	1600	1200
INJECTION UNIT			80h			120h	
Injection speed	mm/s		350			350	
Injection rate (PS)	g/s	90	121	169	121	169	225
Injection pressure	Mpa	260	220	157	280	220	165
	bar	2600	2200	1570	2800	2200	1650
Holding pressure	Mpa	208	175	125	220	160	120
	bar	2080	1750	1250	2200	1600	1200

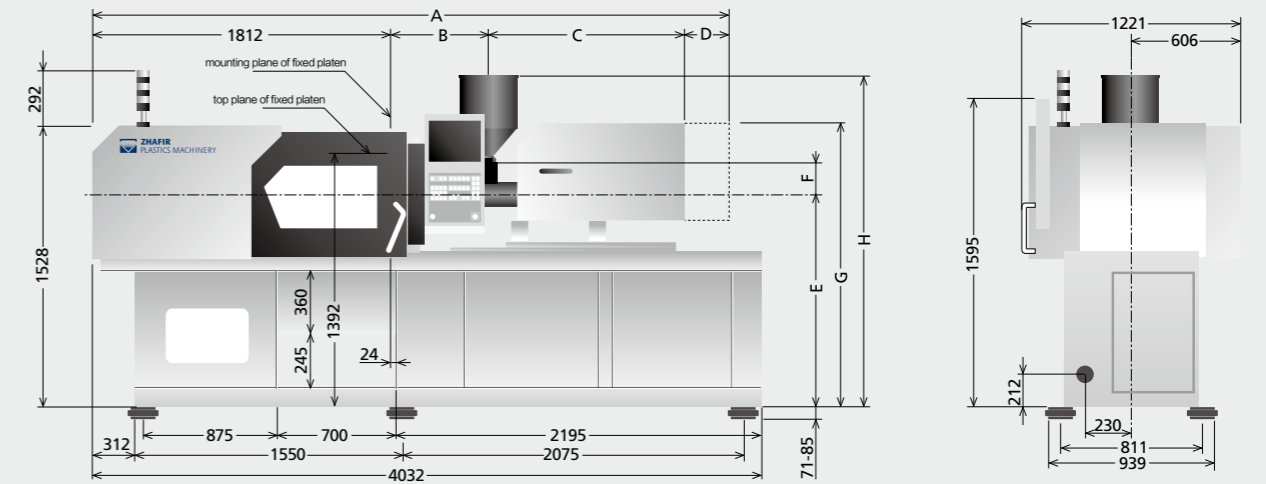
OTHERS

Connection power	kW/A	80:10/17 80h:15/26	120:14/24 120h:21/35
Pressure	Mpa	14	14
Flow	L/min	31	31
Oil tank	L	58	58
Hopper capacity	L	15	15
Machine dimension	m	4.03x1.22x1.82	4.03x1.22x1.82
Machine weight	t	2.8	3

We reserve the right to make changes as a result of further technical advantages.

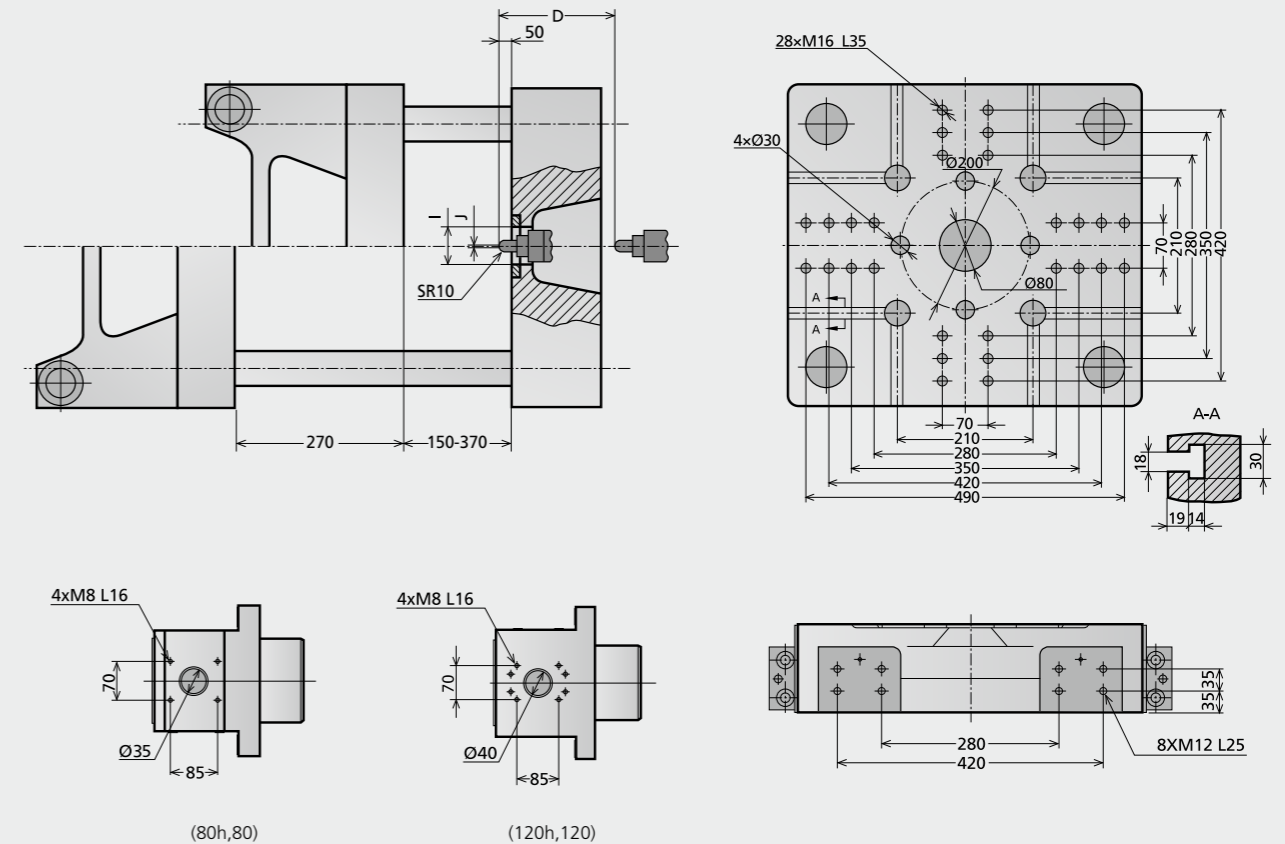
Machine dimensions ZE600

unit: mm



Platen dimensions ZE600

unit: mm



	A	B	C	D	E	F	G	H	I	J
120h,120	3838	577	1159	290	1142	182	1510	1829	Ø100	Ø2.5
80h,80	3705	473	1130	290	1142	182	1510	1754	Ø100	Ø2.2

Technical data ZE900

CLAMPING UNIT

		ZE900
Clamping force	kN	900
Toggle stroke	mm	320
Min. mold height	mm	150
Max. mold height	mm	410
Max. mold opening stroke	mm	730
Space between tie bars HxV	mm	420x370
Min. mold dimension	mm	270x240
Ejector stroke	mm	80
Ejector force	kN (tf)	19.6(2.0)
Mold platen dimension HxV	mm	615x570

		A	B	C	A	B	C	AA	A	B	C
Screw diameter	mm	22	26	30	26	28	30	26	28	32	36
Screw L/D ratio	L/D	20	20	17.4	21	21	19.6	21	21	21	18.6
Injection volume (theoretical) cm ³		36	58	78	58	67	78	61	70	100	127
Injection weight (PS)	g	33	52	70	52	61	70	55	64	91	116
Screw speed	rpm	400			400			400			
Plasticizing capacity (PS)	g/s	6.0	8.8	13	8.8	11	13	8.8	11	16	22
Nozzle contact force	kN (tf)	19.6(2.0)			19.6(2.0)			19.6(2.0)			
Heating power	kW	6.0	7.8	7.8	7.4	7.4	7.4	5.4	7.8	9.2	9.2
INJECTION UNIT		120			160			210			
Injection speed	mm/s	200			200			200			
Injection rate (PS)	g/s	69	96	128	96	112	128	96	112	146	185
Injection pressure	Mpa	280	220	165	260	220	192	280	260	200	160
	bar	2800	2200	1650	2600	2200	1920	2800	2600	2000	1600
Holding pressure	Mpa	220	160	120	160	138	120	224	206	160	126
	bar	2200	1600	1200	1600	1380	1200	2240	2060	1600	1260
INJECTION UNIT		120h			160h			210h			
Injection speed	mm/s	350			350			350			
Injection rate (PS)	g/s	121	169	225	169	196	225	169	196	256	324
Injection pressure	Mpa	280	220	165	260	220	192	280	260	200	160
	bar	2800	2200	1650	2600	2200	1920	2800	2600	2000	1600
Holding pressure	Mpa	220	160	120	160	138	120	224	206	160	126
	bar	2200	1600	1200	1600	1380	1200	2240	2060	1600	1260

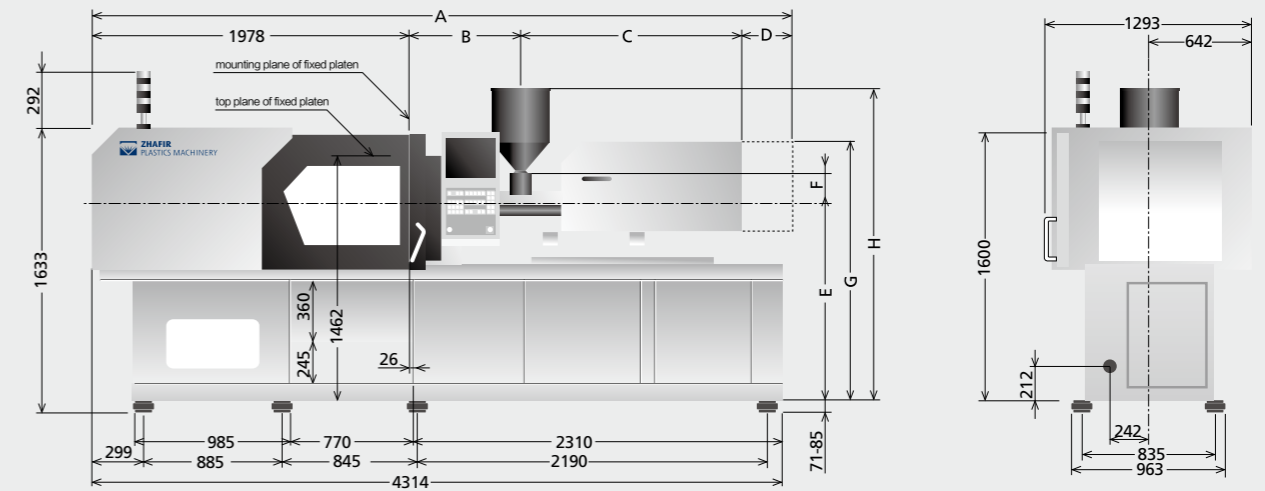
OTHERS

		120:14/24 120h:21/35	160:14/23 160h:21/35	210:17/28 210h:26/43
Connection power	kW/A			
Pressure	Mpa	14	14	14
Flow	L/min	31	31	31
Oil tank	L	58	58	58
Hopper capacity	L	15	15	25
Machine dimension	m	4.31x1.29x1.92	4.31x1.29x1.92	4.31x1.29x1.92
Machine weight	t	4.1	4.1	4.3

We reserve the right to make changes as a result of further technical advantages.

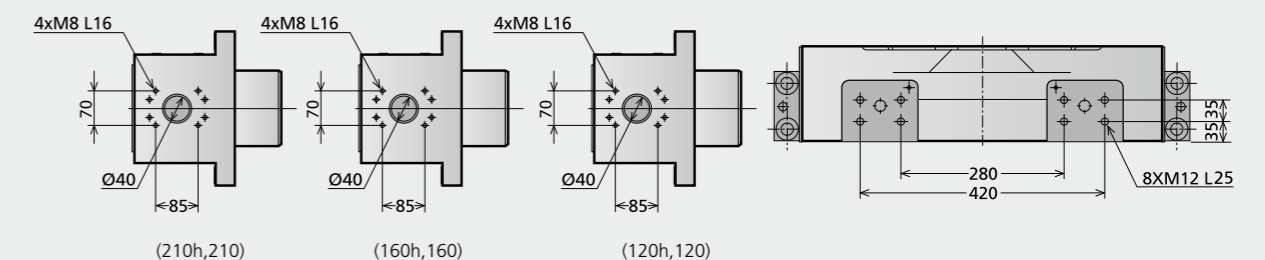
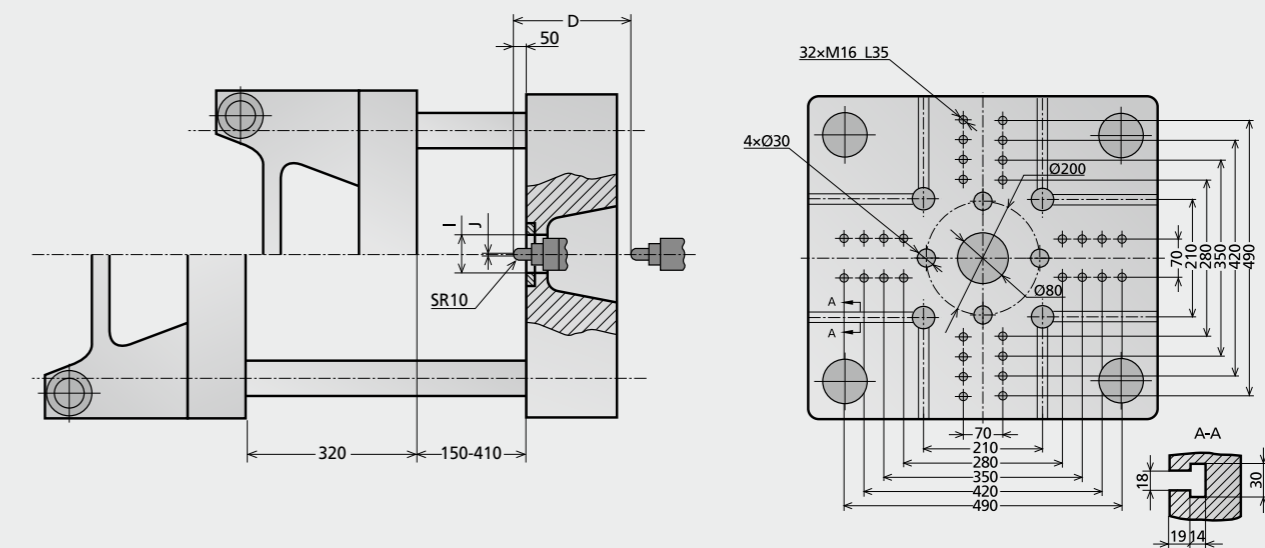
Machine dimensions ZE900

unit: mm



Platen dimensions ZE900

unit: mm



	A	B	C	D	E	F	G	H	I	J
210h,210	4300	696	1310	315	1177	182	1547	1864	Ø125	Ø2.5
160h,160	4260	676	1290	315	1177	182	1547	1864	Ø125	Ø2.5
120h,120	4030	578	1159	315	1177	182	1547	1864	Ø125	Ø2.5

Technical data ZE1200

CLAMPING UNIT

		ZE1200
Clamping force	kN	1200
Toggle stroke	mm	360
Min. mold height	mm	150
Max. mold height	mm	480
Max. mold opening stroke	mm	840
Space between tie bars HxV	mm	470x420
Min. mold dimension	mm	305x270
Ejector stroke	mm	100
Ejector force	kN (tf)	29.4(3.0)
Mold platen dimension HxV	mm	690x640

		A	B	C	AA	A	B	C	AA	A	B	C	A	B	C
Screw diameter	mm	26	28	30	26	28	32	36	30	32	36	40	36	40	45
Screw L/D ratio	L/D	21	21	19.6	21	21	21	18.6	21	22.5	20	18	23.3	21	18.7
Injection volume (theoretical) cm ³		58	67	78	61	70	100	127	102	116	147	182	173	213	270
Injection weight (PS)	g	52	61	70	55	64	91	116	92	106	134	166	157	194	246
Screw speed	rpm	400			400			400			400				
Plasticizing capacity (PS)	g/s	8.8	11	13	8.8	11	16	22	12.8	16	22	30	22	30	42
Nozzle contact force	kN (tf)	24.5(2.5)			24.5(2.5)			24.5(2.5)			24.5(2.5)				
Heating power	kW	7.4	7.4	7.4	5.4	7.8	9.2	9.2	7.7	11.8	11.8	11.8	13.4		

INJECTION UNIT

		160	210	300	430(OP)
Injection speed	mm/s	200	200	200	200
Injection rate (PS)	g/s	96	112	128	185
Injection pressure	Mpa	260	220	192	280
	bar	2600	2200	1920	2800
Holding pressure	Mpa	160	138	120	224
	bar	1600	1380	1200	2240

INJECTION UNIT

		160h	210h	300h	430h(OP)
Injection speed	mm/s	350	350	300	300
Injection rate (PS)	g/s	169	196	225	324
Injection pressure	Mpa	260	220	192	280
	bar	2600	2200	1920	2800
Holding pressure	Mpa	160	138	120	224
	bar	1600	1380	1200	2240

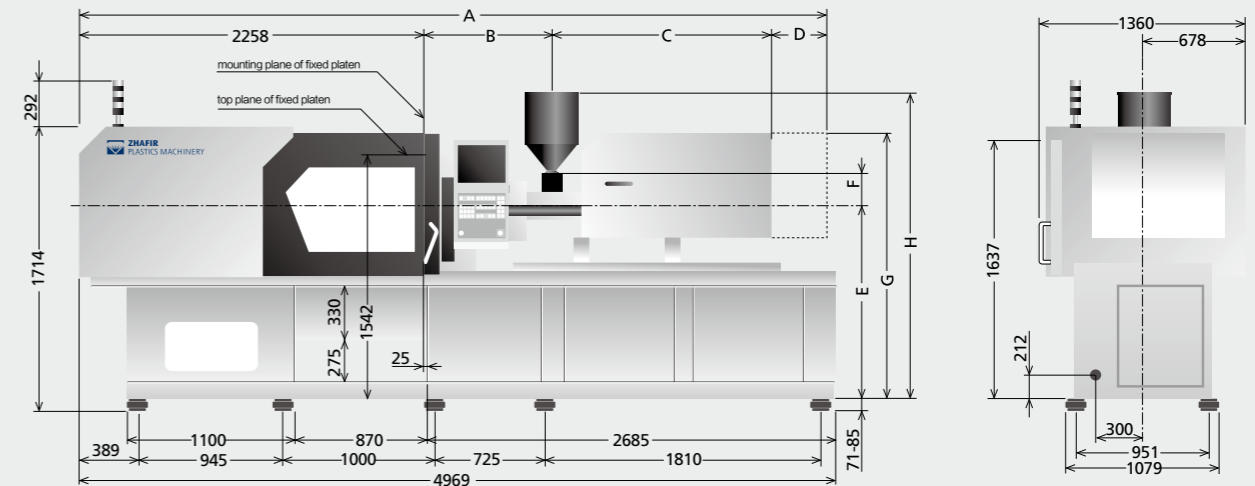
OTHERS

		160:14/23 160h:21/35	210:17/28 210h:26/43	300:22/37 300h:33/55	430:30/50 430h:39/65
Connection power	kW/A				
Pressure	Mpa	14	14	14	14
Flow	L/min	52	52	52	52
Oil tank	L	93	93	93	93
Hopper capacity	L	15	25	25	25
Machine dimension	m	4.97x1.36x2.01	4.97x1.36x2.01	4.97x1.36x2.01	5.38x1.36x2.01
Machine weight	t	5	5.4	5.7	6.2

We reserve the right to make changes as a result of further technical advantages.

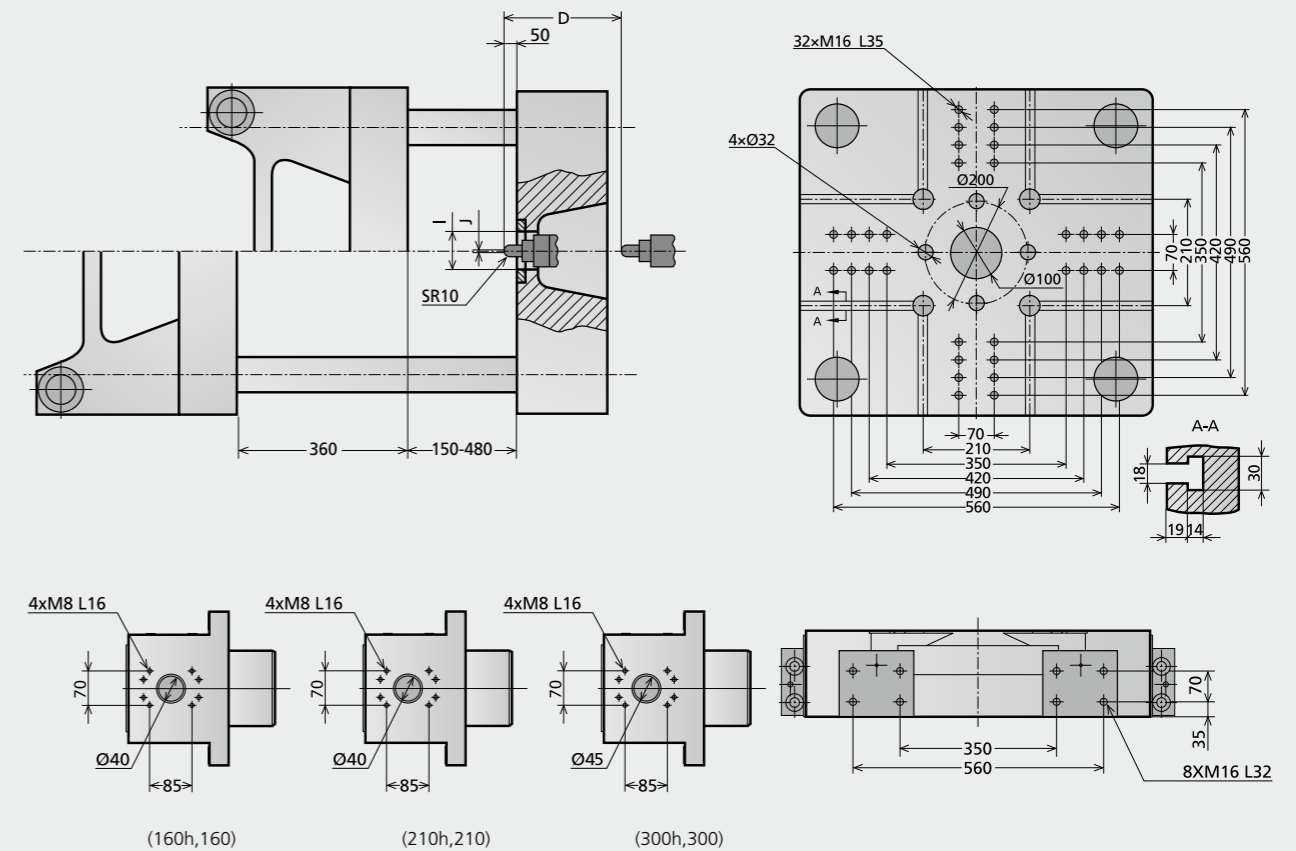
Machine dimensions ZE1200

unit: mm



Platen dimensions ZE1200

unit: mm



	A	B	C	D	E	F	G	H	I	J
430h,430	5380	994	1768	360	1225	204	1712	1934	Ø125	Ø3
300h,300	4808	845	1445	360	1224	205	1682	1934	Ø125	Ø2.5
210h,210	4655	772	1310	315	1222	182	1593	1909	Ø125	Ø2.5
160h,160	4540	676	1290	315	1222	182	1593	1909	Ø125	Ø2.5

Technical data ZE1500

CLAMPING UNIT

		ZE1500
Clamping force	kN	1500
Toggle stroke	mm	420
Min. mold height	mm	180
Max. mold height	mm	520
Max. mold opening stroke	mm	940
Space between tie bars HxV	mm	520x470
Min. mold dimension	mm	335x305
Ejector stroke	mm	120
Ejector force	kN (tf)	34.3(3.5)
Mold platen dimension HxV	mm	770x730

		A	B	C	AA	A	B	C	A	B	C	A	B	C
Screw diameter	mm	28	32	36	30	32	36	40	36	40	45	40	45	50
Screw L/D ratio	L/D	21	21	18.6	21	22.5	20	18	23.3	21	18.7	22.5	20	18
Injection volume (theoretical) cm ³		70	100	127	102	116	147	182	173	213	270	252	319	395
Injection weight (PS)	g	64	91	116	92	106	134	166	157	194	246	229	290	358
Screw speed	rpm	400			400			400			350			
Plasticizing capacity (PS)	g/s	11	16	22	12.8	16	22	30	22	30	42	27	39	50
Nozzle contact force	kN (tf)	19.6(2.0)			29.4(3.0)			29.4(3.0)			29.4(3.0)			
Heating power	kW	7.8	9.2	9.2	7.7	11.8	11.8	11.8	13.4	14.8				
INJECTION UNIT		210			300			430			640(OP)			
Injection speed	mm/s	200			200			200			160			
Injection rate (PS)	g/s	112	146	185	128	146	184	228	184	228	289	183	231	285
Injection pressure	Mpa	260	200	160	280	253	200	162	247	200	158	253	200	162
	bar	2600	2000	1600	2800	2530	2000	1620	2470	2000	1580	2530	2000	1620
Holding pressure	Mpa	206	160	126	224	202	160	130	197	160	126	202	160	130
	bar	2060	1600	1260	2240	2020	1600	1300	1970	1600	1260	2020	1600	1300
INJECTION UNIT		210h			300h			430h			640h(OP)			
Injection speed	mm/s	350			300			300			250			
Injection rate (PS)	g/s	196	256	324	193	220	277	342	277	342	434	285	360	445
Injection pressure	Mpa	260	200	160	280	253	200	162	247	200	158	253	200	162
	bar	2600	2000	1600	2800	2530	2000	1620	2470	2000	1580	2530	2000	1620
Holding pressure	Mpa	206	160	126	224	202	160	130	197	160	126	202	160	130
	bar	2060	1600	1260	2240	2020	1600	1300	1970	1600	1260	2020	1600	1300

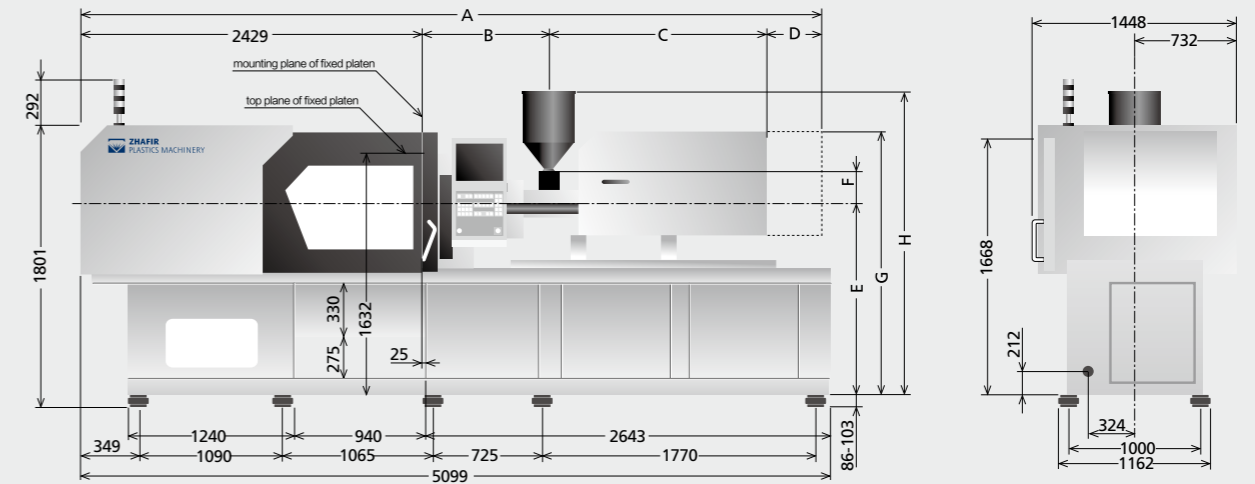
OTHERS

		210:17/28 210h:26/43	300:22/37 300h:33/55	430:30/50 430h:39/65	640:37/62 640h:39/66
Connection power	kW/A				
Pressure	Mpa	14	14	14	14
Flow	L/min	52	52	52	52
Oil tank	L	93	93	93	93
Hopper capacity	L	25	25	25	25
Machine dimension	m	5.10x1.45x2.09	5.12x1.45x2.09	5.59x1.45x2.09	5.68x1.45x2.09
Machine weight	t	6.4	6.6	7.1	7.1

We reserve the right to make changes as a result of further technical advantages.

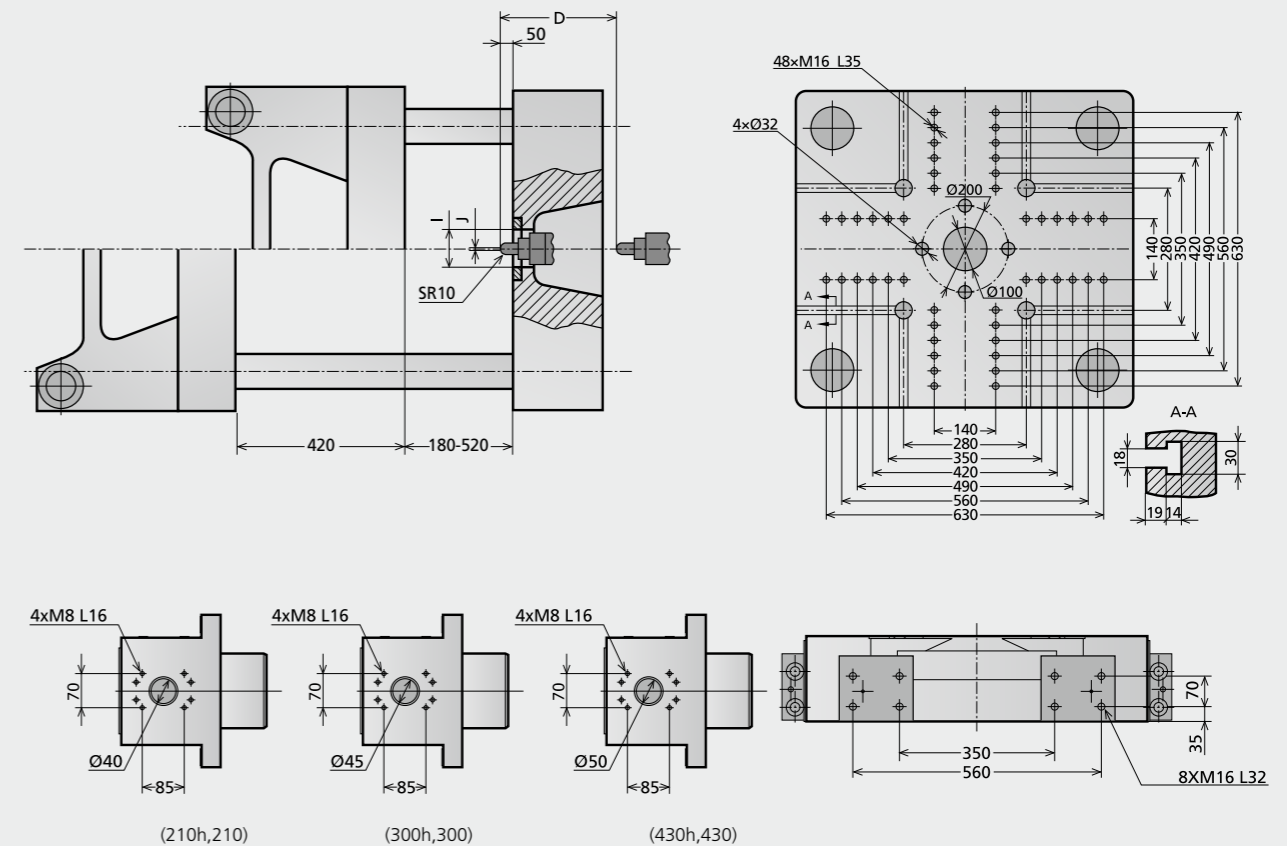
Machine dimensions ZE1500

unit: mm



Platen dimensions ZE1500

unit: mm



	A	B	C	D	E	F	G	H	I	J
640h,640	5684	1043	1811	400	1270	204	1757	1979	Ø125	Ø3
430h,430	5594	993	1772	400	1270	204	1757	1979	Ø125	Ø3
300h,300	5119	843	1447	400	1267	207	1728	1979	Ø125	Ø2.5
210h,210	4914	776	1309	400	1267	182	1638	1954	Ø125	Ø2.5

Technical data ZE1900

CLAMPING UNIT

		ZE1900
Clamping force	kN	1900
Toggle stroke	mm	470
Min. mold height	mm	200
Max. mold height	mm	550
Max. mold opening stroke	mm	1020
Space between tie bars HxV	mm	570x520
Min. mold dimension	mm	370x335
Ejector stroke	mm	130
Ejector force	kN (tf)	44.1(4.5)
Mold platen dimension HxV	mm	840x790

		A	B	C	A	B	C	A	B	C	A	B	C
Screw diameter	mm	32	36	40	36	40	45	40	45	50	45	50	55
Screw L/D ratio	L/D	22.5	20	18	23.3	21	18.7	22.5	20	18	22.2	20	18
Injection volume (theoretical) cm ³		116	147	182	173	213	270	252	319	395	334	412	499
Injection weight (PS)	g	106	134	166	157	194	246	229	290	358	304	375	454
Screw speed	rpm	400			400			350			320		
Plasticizing capacity (PS)	g/s	16	22	30	22	30	42	27	39	50	35	46	60
Nozzle contact force	kN (tf)	24.5(2.5)			39.2(4.0)			39.2(4.0)			39.2(4.0)		
Heating power	kW	11.8	11.8	11.8	13.4			14.8			20.2		
INJECTION UNIT		300			430			640			830(OP)		
Injection speed	mm/s	200			200			160			160		
Injection rate (PS)	g/s	146	184	228	184	228	289	183	231	285	231	285	346
Injection pressure	Mpa	253	200	162	247	200	158	253	200	162	247	200	165
	bar	2530	2000	1620	2470	2000	1580	2530	2000	1620	2470	2000	1650
Holding pressure	Mpa	202	160	130	197	160	126	202	160	130	197	160	132
	bar	2020	1600	1300	1970	1600	1260	2020	1600	1300	1970	1600	1320
INJECTION UNIT		300h			430h			640h			830h(OP)		
Injection speed	mm/s	300			300			250			250		
Injection rate (PS)	g/s	220	277	342	277	342	434	285	360	445	362	446	594
Injection pressure	Mpa	253	200	162	247	200	158	253	200	162	247	200	165
	bar	2530	2000	1620	2470	2000	1580	2530	2000	1620	2470	2000	1650
Holding pressure	Mpa	202	160	130	197	160	126	202	160	130	197	160	132
	bar	2020	1600	1300	1970	1600	1260	2020	1600	1300	1970	1600	1320

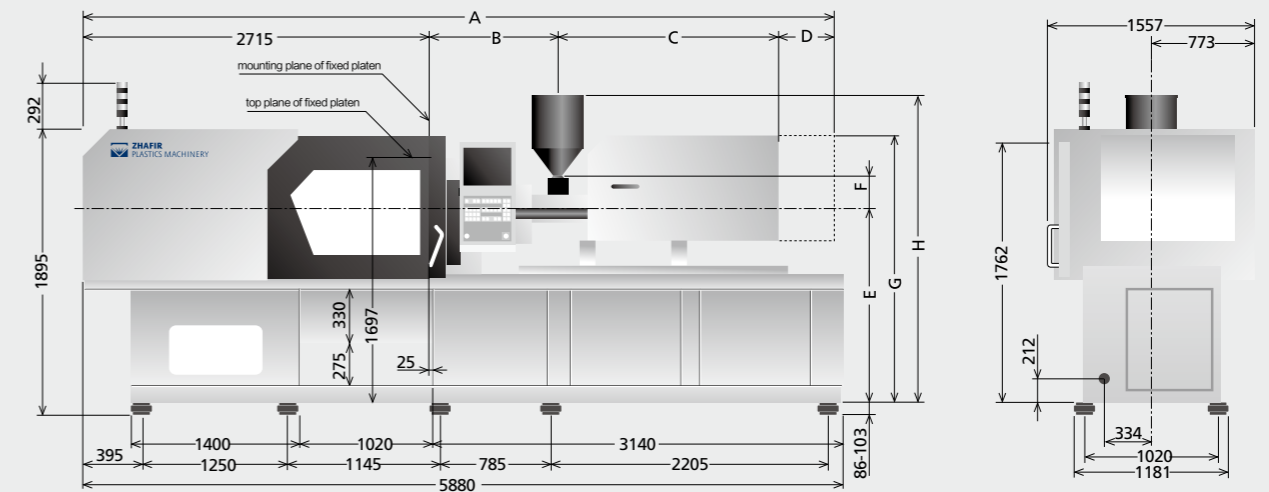
OTHERS

		300:22/37 300h:33/55	430:30/50 430h:39/65	640:37/62 640h:39/66	830:45/76 830h:57/96
Connection power	kW/A				
Pressure	Mpa	14	14	14	14
Flow	L/min	70	70	70	70
Oil tank	L	115	115	115	115
Hopper capacity	L	25	25	25	50
Machine dimension	m	5.88x1.56x2.19	5.88x1.56x2.19	5.98x1.56x2.19	6.28x1.56x2.19
Machine weight	t	7.6	8	8.4	9.3

We reserve the right to make changes as a result of further technical advantages.

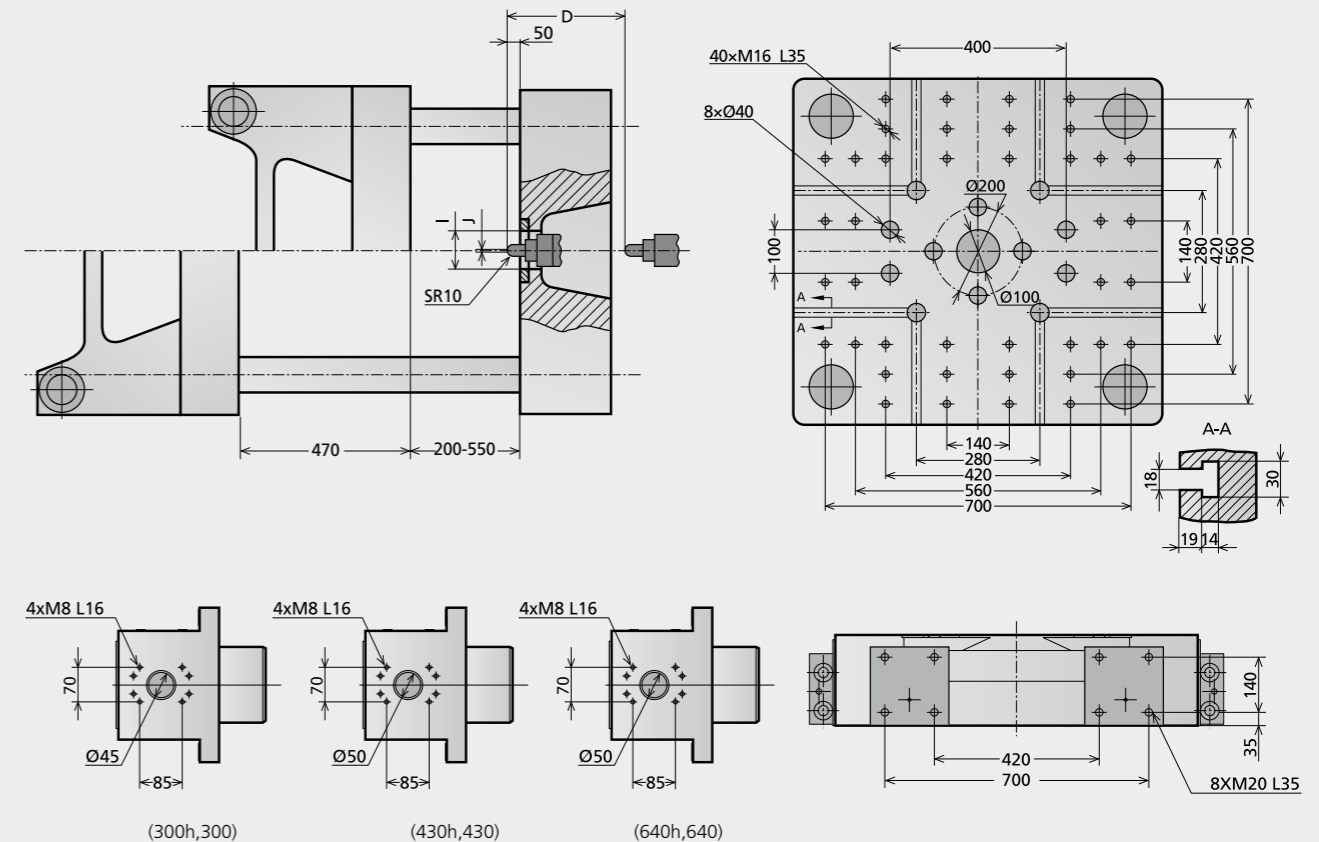
Machine dimensions ZE1900

unit: mm



Platen dimensions ZE1900

unit: mm



	A	B	C	D	E	F	G	H	I	J
830h,830	6285	1164	1977	430	1302	232	1888	2115	Ø160	Ø3
640h,640	5979	1053	1811	400	1302	212	1792	2020	Ø160	Ø3
430h,430	5879	993	1770	400	1302	212	1792	2019	Ø160	Ø3
300h,300	5405	842	1447	400	1302	205	1764	2014	Ø160	Ø2.5

Technical data ZE2300

CLAMPING UNIT

		ZE2300
Clamping force	kN	2300
Toggle stroke	mm	550
Min. mold height	mm	220
Max. mold height	mm	600
Max. mold opening stroke	mm	1150
Space between tie bars HxV	mm	620x620
Min. mold dimension	mm	400x400
Ejector stroke	mm	150
Ejector force	kN (tf)	49(5.0)
Mold platen dimension HxV	mm	920x920

		A	B	C	A	B	C	A	B	C	A	B	C
Screw diameter	mm	36	40	45	40	45	50	45	50	55	50	55	60
Screw L/D ratio	L/D	23.3	21	18.7	22.5	20	18	22.2	20	18	22	20	18.3
Injection volume (theoretical) cm ³		173	213	270	252	319	395	334	412	499	471	570	678
Injection weight (PS)	g	157	194	246	229	290	358	304	375	454	428	518	617
Screw speed	rpm	400			350			320			320		
Plasticizing capacity (PS)	g/s	22	30	42	27	39	50	35	46	60	52	63.6	75
Nozzle contact force	kN (tf)	29.4(3.0)			49(5.0)			49(5.0)			54(5.5)		
Heating power	kW	13.4			14.8			20.2			25		

INJECTION UNIT

		430	640	830	1100(OP)								
Injection speed	mm/s	200	160	160	160								
Injection rate (PS)	g/s	184	228	289	183	231	285	231	285	346	285	346	411
Injection pressure	Mpa	247	200	158	253	200	162	247	200	165	218	180	151
	bar	2470	2000	1580	2530	2000	1620	2470	2000	1650	2180	1800	1510
Holding pressure	Mpa	197	160	126	202	160	130	197	160	132	194	160	134
	bar	1970	1600	1260	2020	1600	1300	1970	1600	1320	1940	1600	1340

INJECTION UNIT

		430h	640h	830h	1100h(OP)								
Injection speed	mm/s	300	250	250	250								
Injection rate (PS)	g/s	277	342	434	285	360	445	362	446	594	446	540	642
Injection pressure	Mpa	247	200	158	253	200	162	247	200	165	218	180	151
	bar	2470	2000	1580	2530	2000	1620	2470	2000	1650	2180	1800	1510
Holding pressure	Mpa	197	160	126	202	160	130	197	160	132	194	160	134
	bar	1970	1600	1260	2020	1600	1300	1970	1600	1320	1940	1600	1340

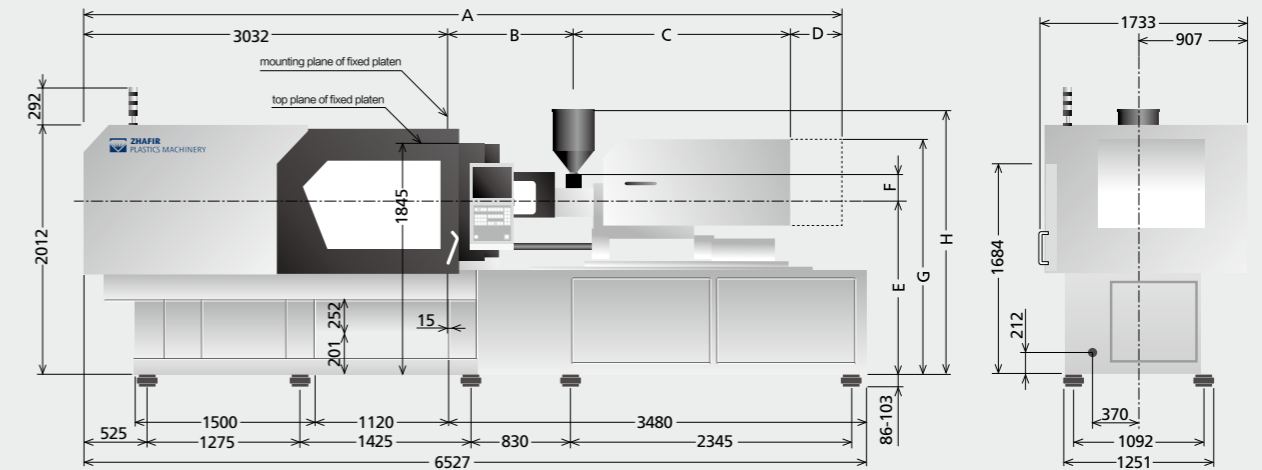
OTHERS

		430:30/50 430h:39/65	640:37/62 640h:39/66	830:45/76 830h:57/96	1100:47/79 1100h:63/105
Connection power	kW/A				
Pressure	Mpa	14	14	14	14
Flow	L/min	80	80	80	80
Oil tank	L	122	122	122	122
Hopper capacity	L	25	25	50	50
Machine dimension	m	6.53x1.73x2.3	6.53x1.73x2.3	6.60x1.73x2.3	6.76x1.73x2.3
Machine weight	t	11.4	11.5	11.7	12.5

We reserve the right to make changes as a result of further technical advantages.

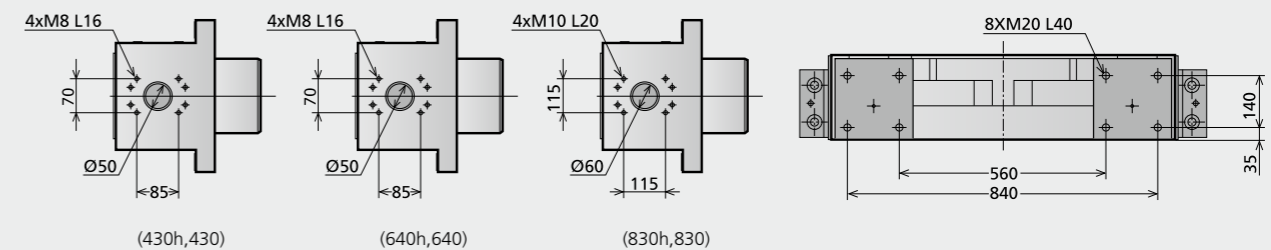
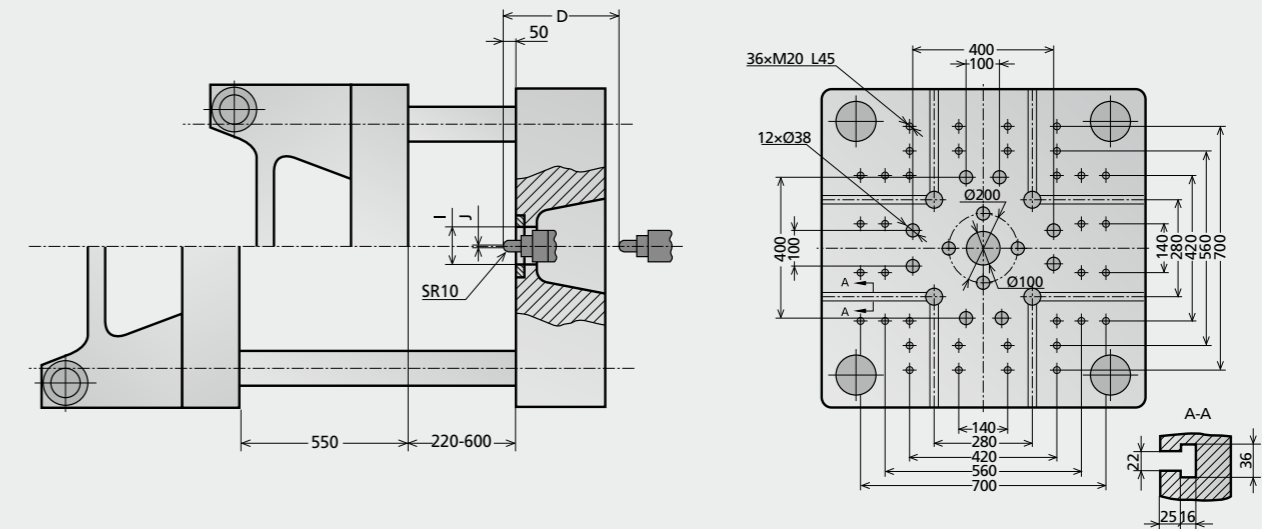
Machine dimensions ZE2300

unit: mm



Platen dimensions ZE2300

unit: mm



	A	B	C	D	E	F	G	H	I	J
1100h,1100	6761	1265	2034	430	1387	243	1973	2210	Ø160	Ø3
830h,830	6598	1153	1983	430	1387	233	1973	2200	Ø160	Ø3
640h,640	6291	1049	1810	400	1387	212	1877	2104	Ø160	Ø3
430h,430	6192	988	1772	400	1387	207	1877	2100	Ø160	Ø3

Technical data ZE3600

CLAMPING UNIT

		ZE3600	
Clamping force	kN	3600	
Toggle stroke	mm	700	
Min. mold height	mm	250	
Max. mold height	mm	710	
Max. mold opening stroke	mm	1410	
Space between tie bars HxV	mm	820x820	
Min. mold dimension	mm	540x540	
Ejector stroke	mm	160	
Ejector force	kN (tf)	58.8(6.0)	
Mold platen dimension HxV	mm	1150x1150	

		1100			1400			1700			2250(OP)		
Screw diameter	mm	50	55	60	55	60	65	60	65	70	65	70	80
Screw L/D ratio	L/D	22	20	18.3	21.8	20	18.5	21.6	20	18.6	21.5	20	17.5
Injection volume (theoretical) cm ³		471	570	678	617	735	863	792	929	1078	1068	1239	1619
Injection weight (PS)	g	428	518	617	562	668	785	720	845	980	972	1127	1473
Screw speed	rpm	320			300			250			210		
Plasticizing capacity (PS)	g/s	52	63.6	75	54	64	71	57	68	77	56	65	80
Nozzle contact force	kN (tf)	54(5.5)			54(5.5)			54(5.5)			88.2(9.0)		
Heating power	kW	25			29.8			34.4			38		
INJECTION UNIT		1100			1400			1700			2250(OP)		
Injection speed	mm/s	160			160			160			160		
Injection rate (PS)	g/s	285	346	411	346	411	483	411	483	560	483	560	731
Injection pressure	Mpa	218	180	151	214	180	153	210	180	155	210	180	138
	bar	2180	1800	1510	2140	1800	1530	2100	1800	1550	2100	1800	1380
Holding pressure	Mpa	194	160	134	190	160	136	187	160	138	190	162	124
	bar	1940	1600	1340	1900	1600	1360	1870	1600	1380	1900	1620	1240
INJECTION UNIT		1100h			1400h			1700h			--		
Injection speed	mm/s	250			250			250			--		
Injection rate (PS)	g/s	446	540	642	540	642	754	642	754	875	--	--	--
Injection pressure	Mpa	218	180	151	214	180	153	210	180	155	--	--	--
	bar	2180	1800	1510	2140	1800	1530	2100	1800	1550	--	--	--
Holding pressure	Mpa	194	160	134	190	160	136	187	160	138	--	--	--
	bar	1940	1600	1340	1900	1600	1360	1870	1600	1380	--	--	--

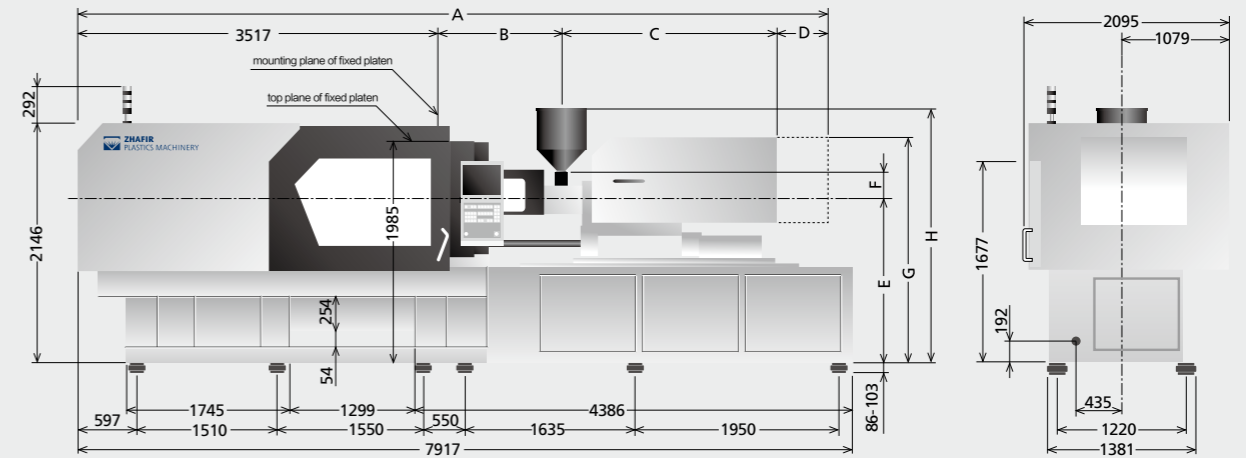
OTHERS

		1100:47/79 1100h:63/105		1400:71/118 1400h:100/168		1700:83/139 1700h:102/171		2250:77/129	
Connection power	kW/A								
Pressure	Mpa	14		14		14		14	
Flow	L/min	100		100		100		100	
Oil tank	L	135		135		135		135	
Hopper capacity	L	50		50		50		100	
Machine dimension	m	7.92x2.1x2.44		7.92x2.1x2.44		7.97x2.1x2.44		8.48*2.1*2.47	
Machine weight	t	17.7		19		19.1		20.9	

We reserve the right to make changes as a result of further technical advantages.

Machine dimensions ZE3600

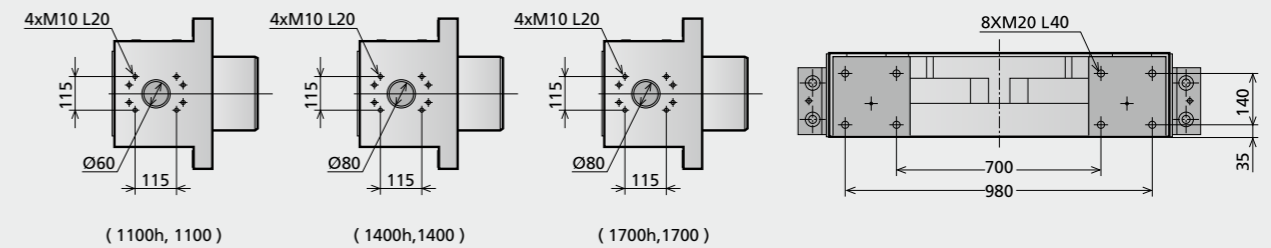
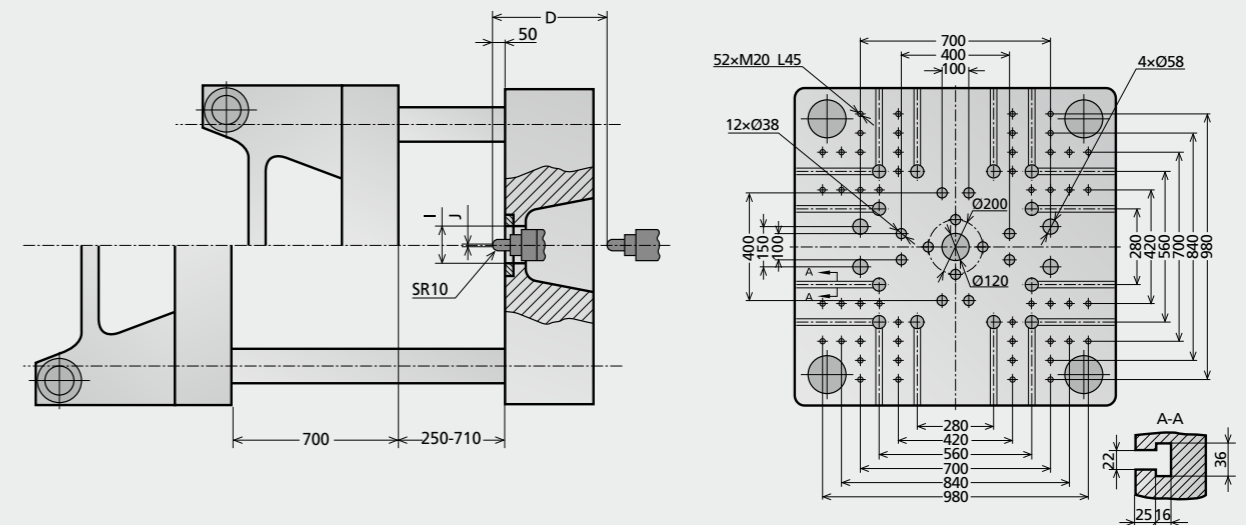
unit: mm



Note: The above machine size does not apply to the 2250 injection unit.

Platen dimensions ZE3600

unit: mm



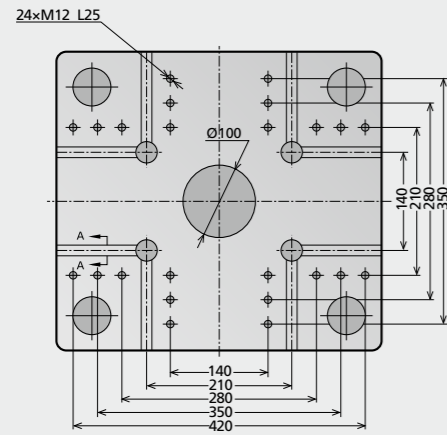
	A	B	C	D	E	F	G	H	I	J
1700h, 1700	7972	1522	2373	560	1390	248	2055	2218	Ø200	Ø3
1400h, 1400	7768	1361	2333	560	1390	248	2055	2218	Ø200	Ø3
1100h, 1100	7385	1273	2035	560	1390	242	1976	2213	Ø200	Ø3

Platen Layout ZE400

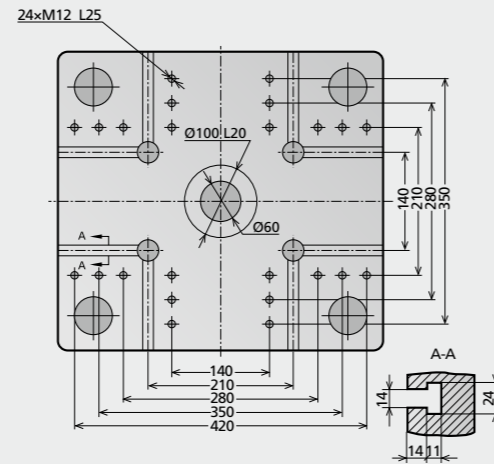
European version

unit: mm

Fixed platen



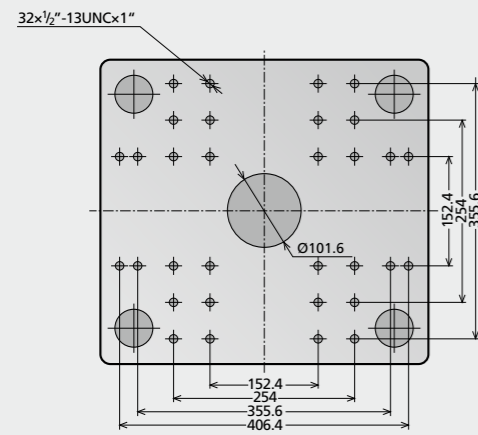
Movable platen



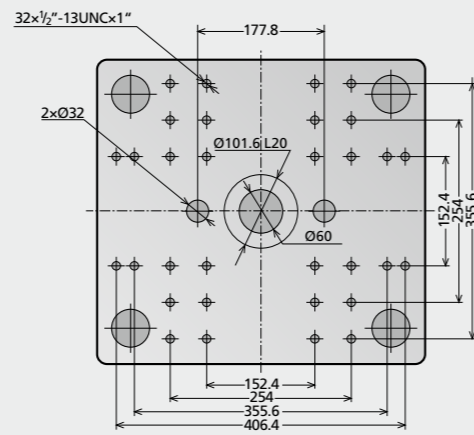
American version

unit: mm

Fixed platen



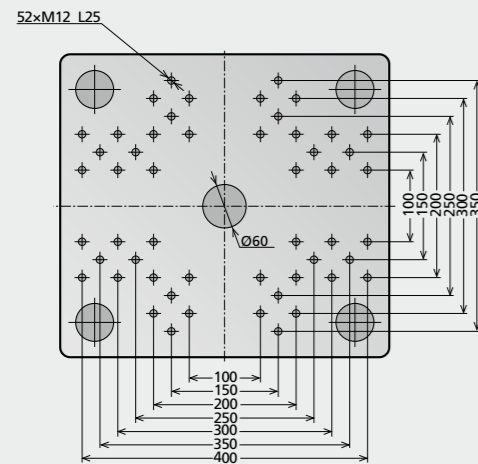
Movable platen



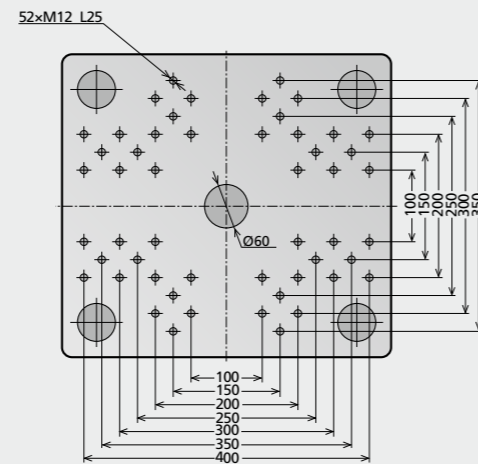
Japanese version

unit: mm

Fixed platen



Movable platen

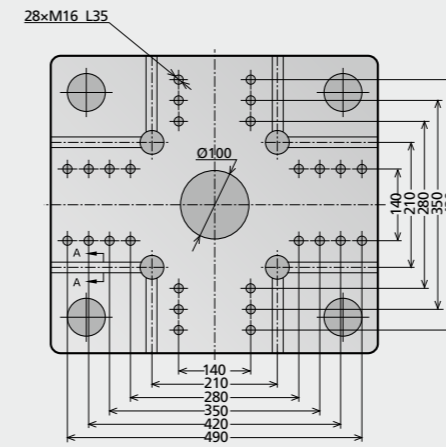


Platen Layout ZE600

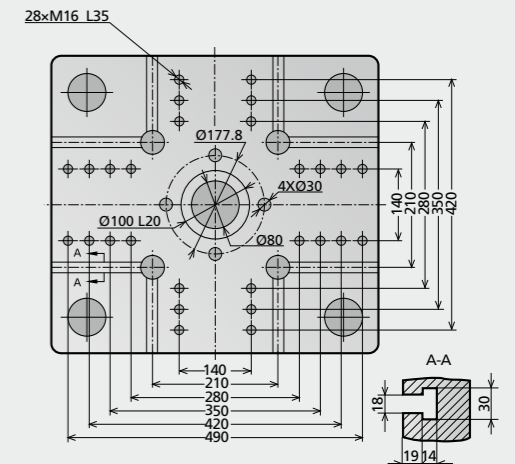
European version

unit: mm

Fixed platen



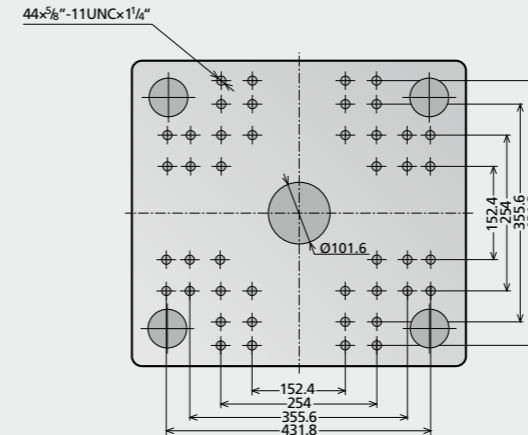
Movable platen



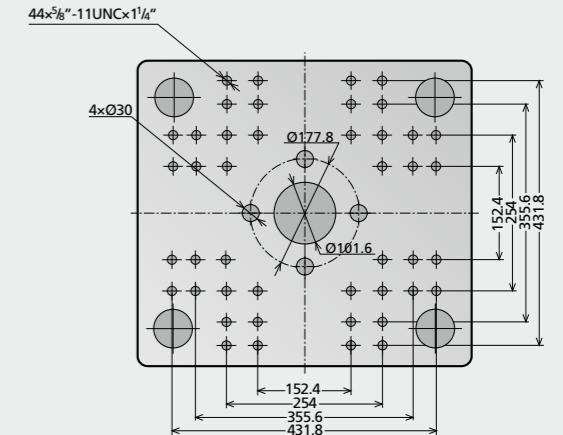
American version

unit: mm

Fixed platen



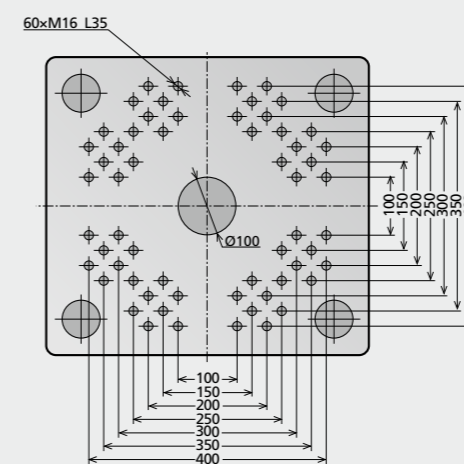
Movable platen



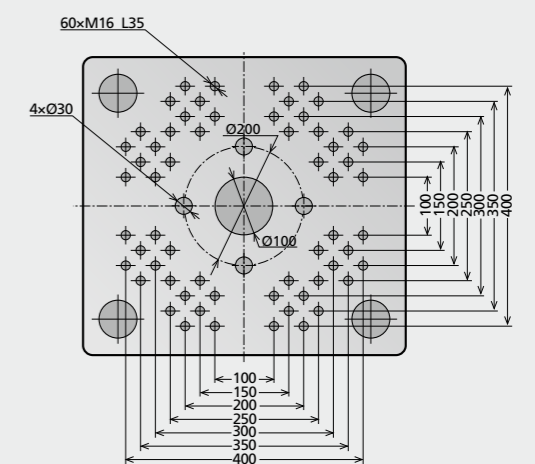
Japanese version

unit: mm

Fixed platen



Movable platen

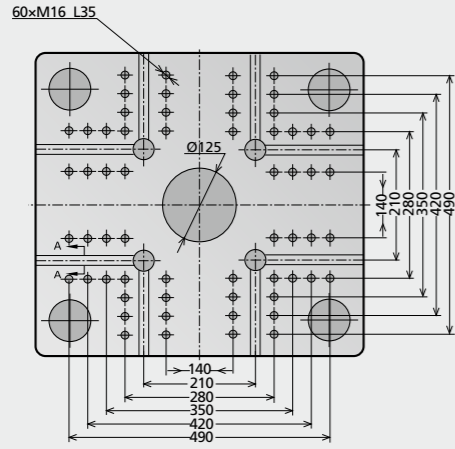


Platen Layout ZE900

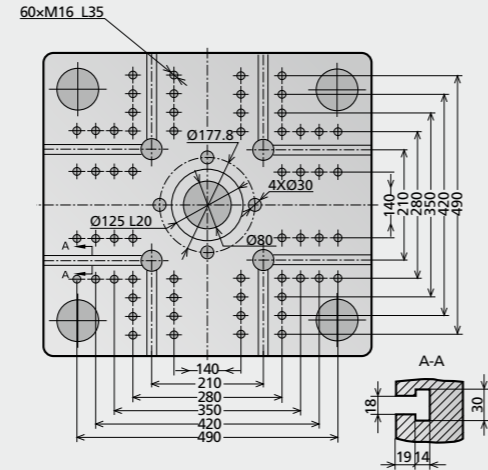
European version

unit: mm

Fixed platen



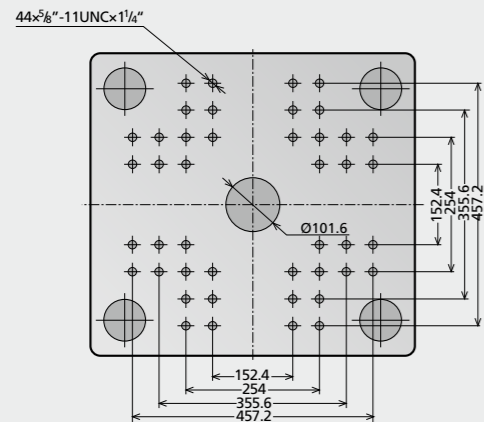
Movable platen



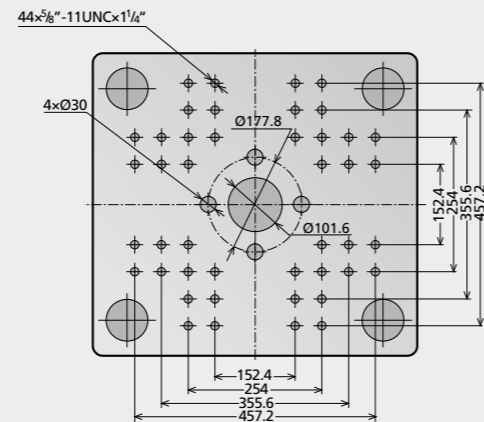
American version

unit: mm

Fixed platen



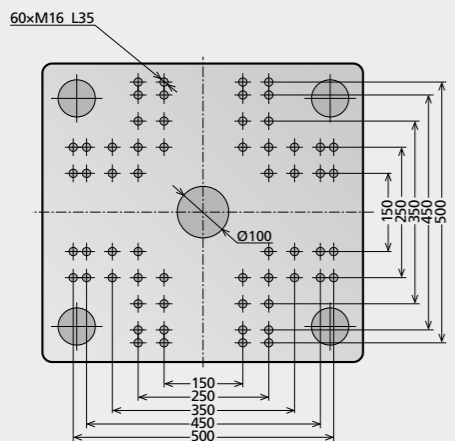
Movable platen



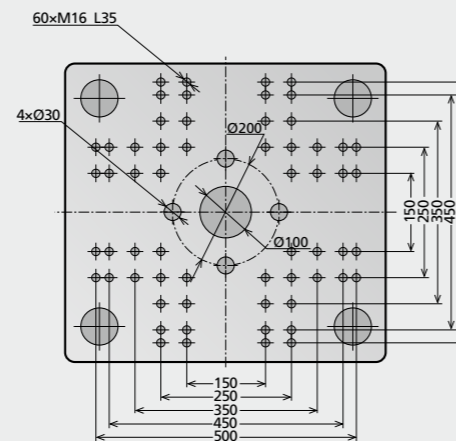
Japanese version

unit: mm

Fixed platen



Movable platen

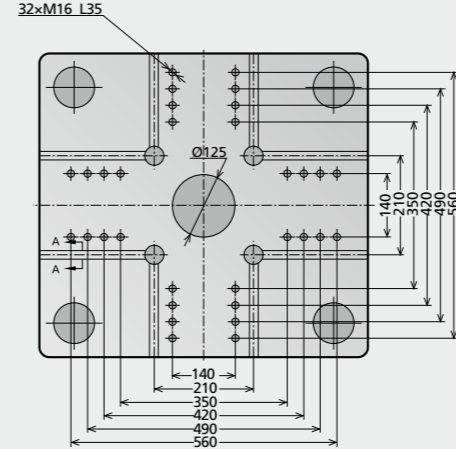


Platen Layout ZE1200

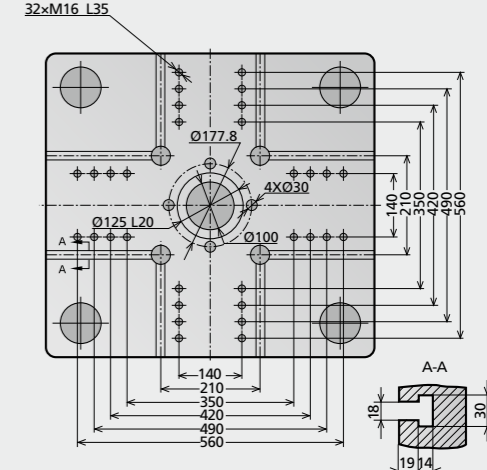
European version

unit: mm

Fixed platen



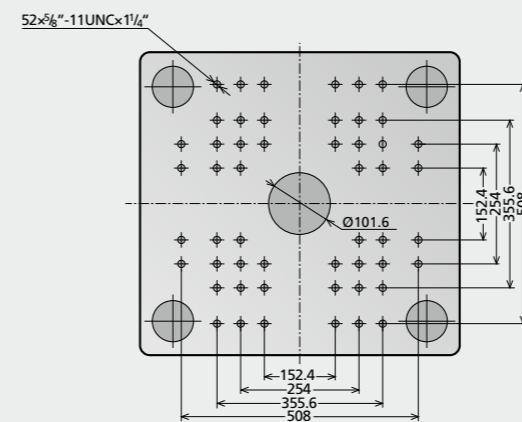
Movable platen



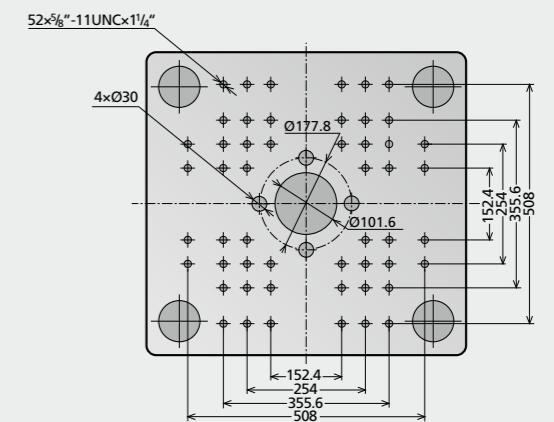
American version

unit: mm

Fixed platen



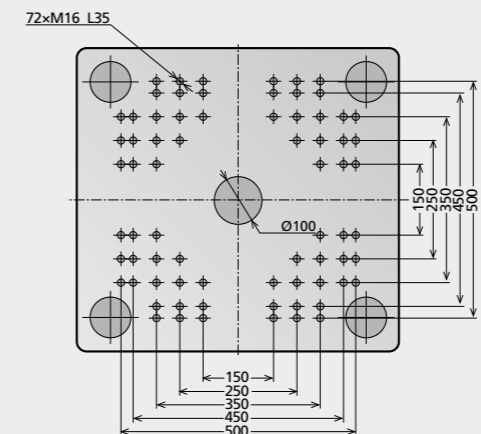
Movable platen



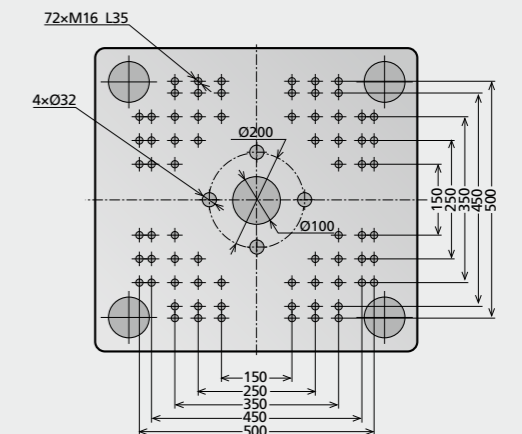
Japanese version

unit: mm

Fixed platen



Movable platen



Platen Layout ZE1500

Platen Layout ZE1900

European version

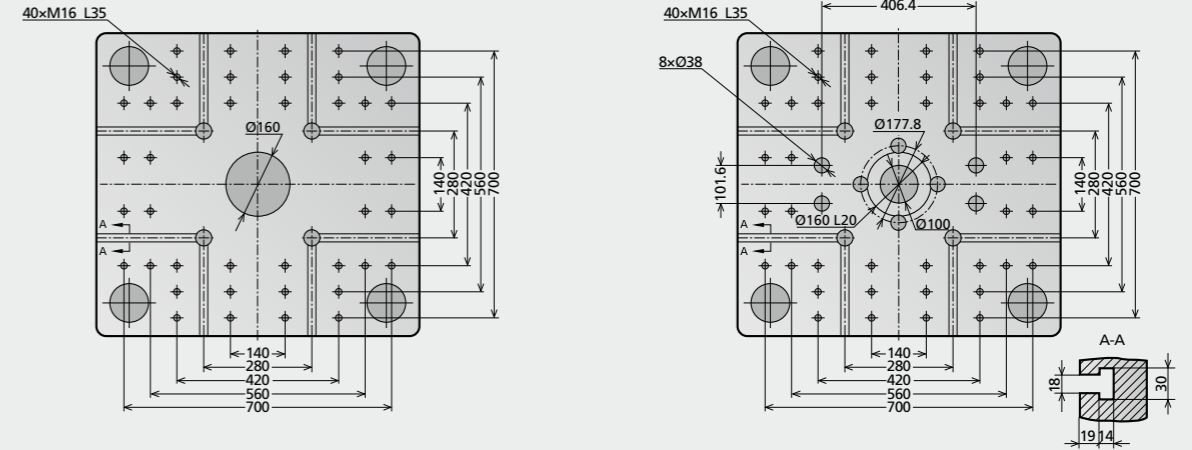
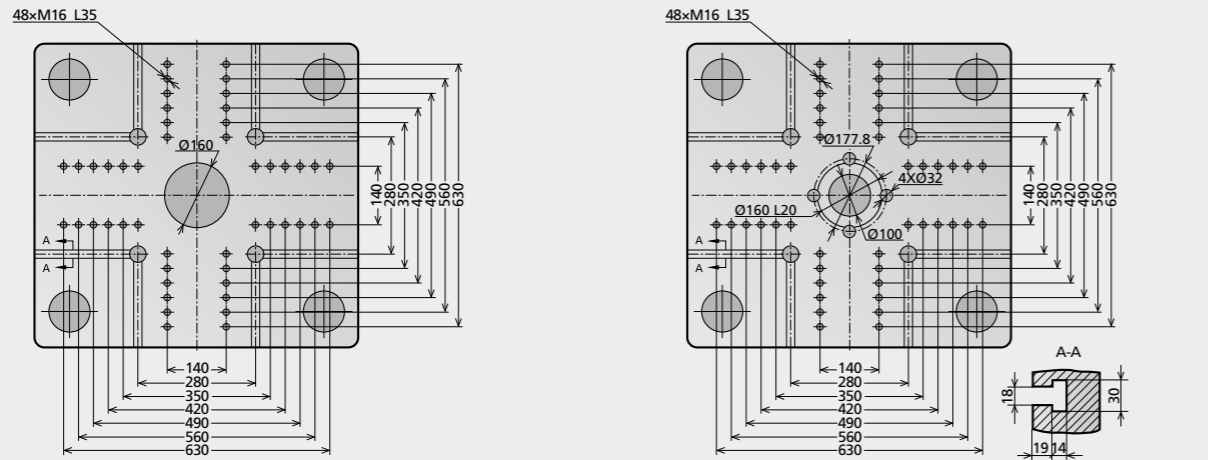
European version

Fixed platen

Movable platen

Fixed platen

Movable platen



American version

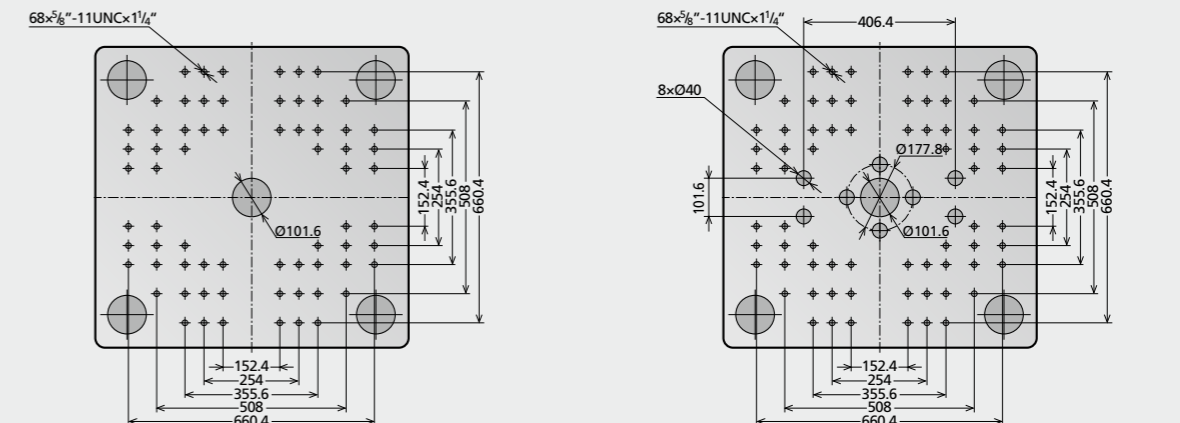
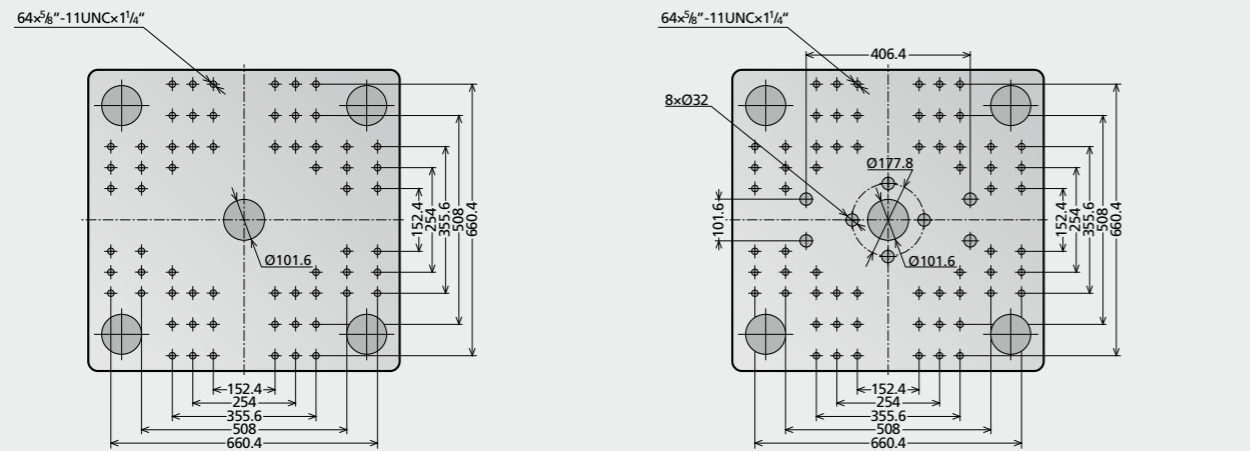
American version

Fixed platen

Movable platen

Fixed platen

Movable platen



Japanese version

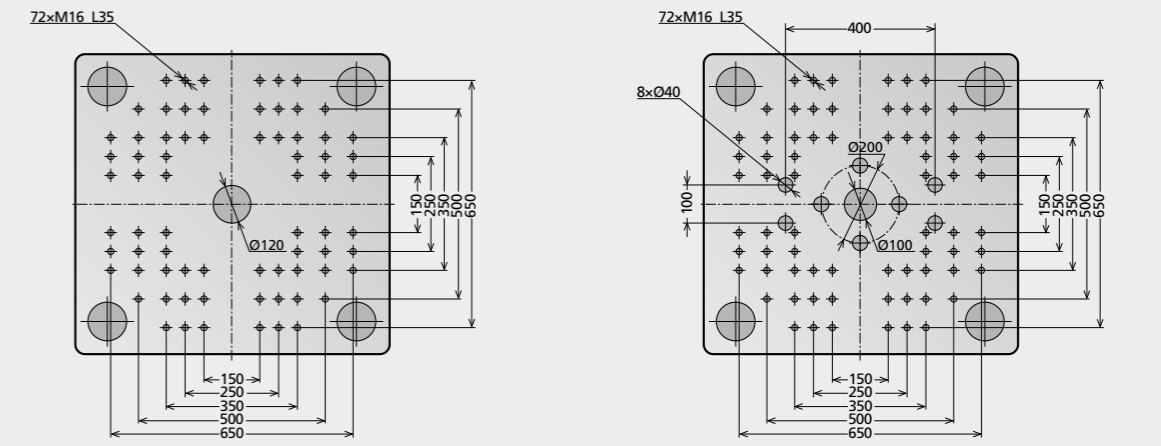
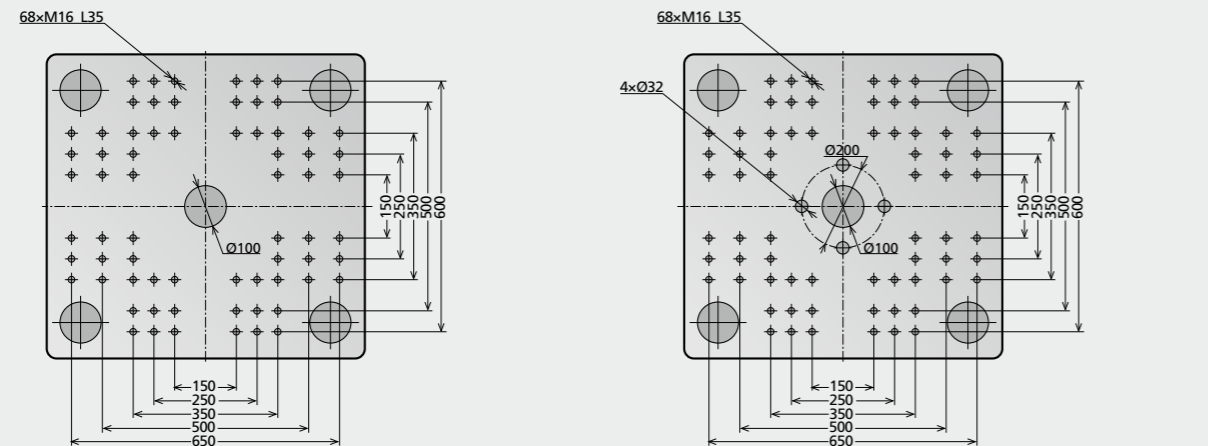
Japanese version

Fixed platen

Movable platen

Fixed platen

Movable platen



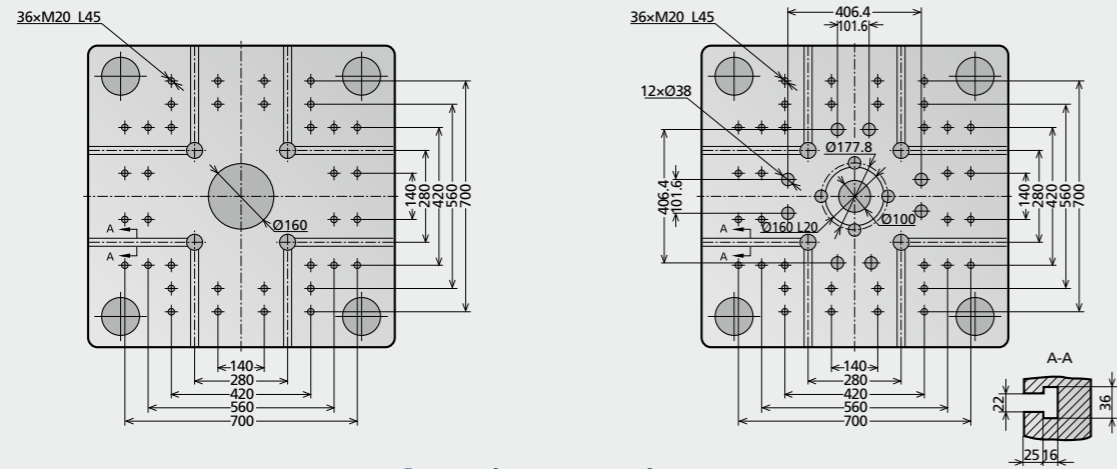
Platen Layout ZE2300

European version

unit: mm

Fixed platen

Movable platen

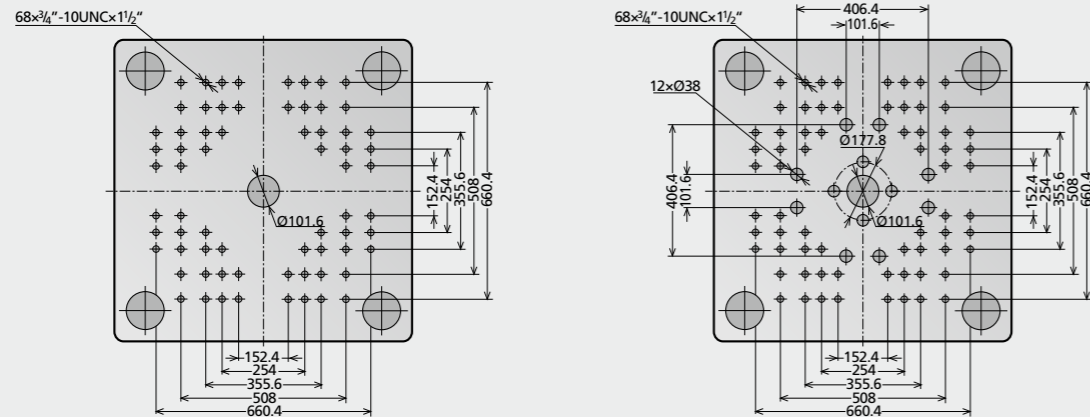


American version

unit: mm

Fixed platen

Movable platen

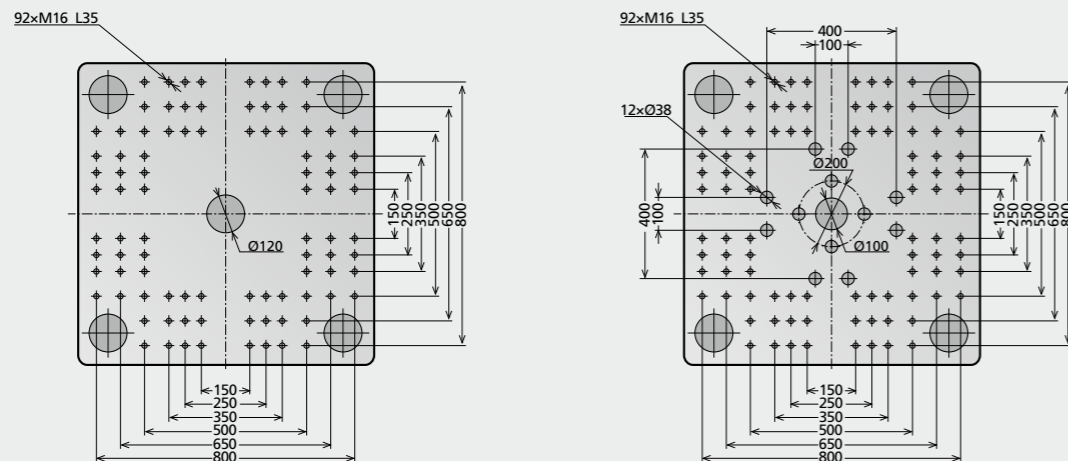


Japanese version

unit: mm

Fixed platen

Movable platen



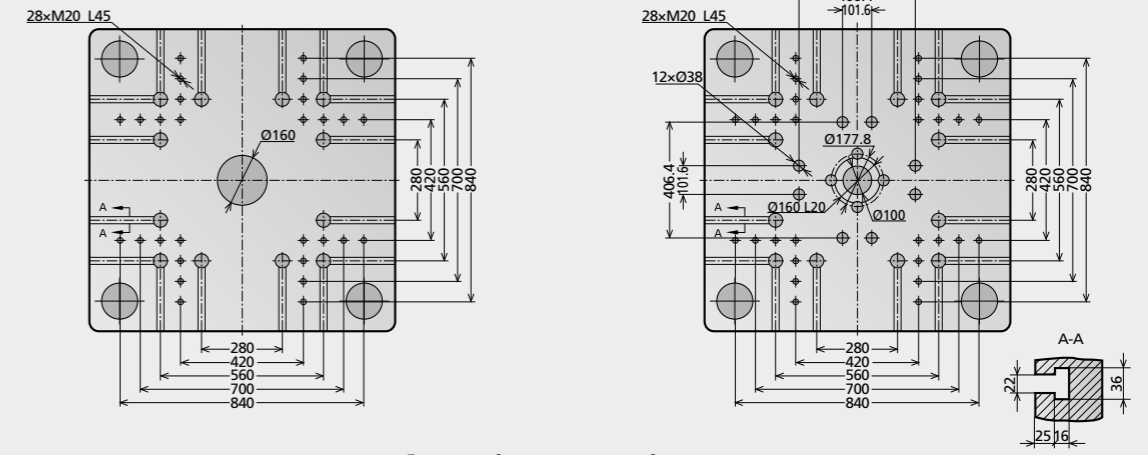
Platen Layout ZE3000

European version

unit: mm

Fixed platen

Movable platen

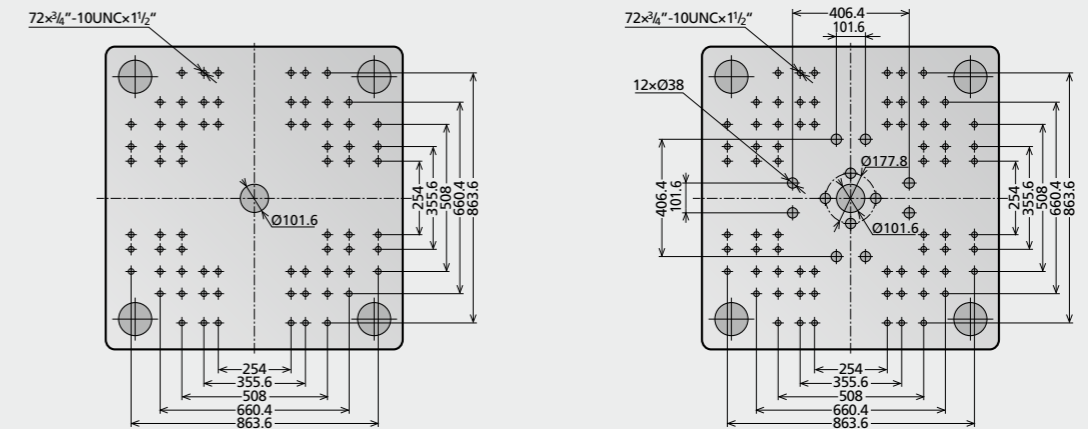


American version

unit: mm

Fixed platen

Movable platen

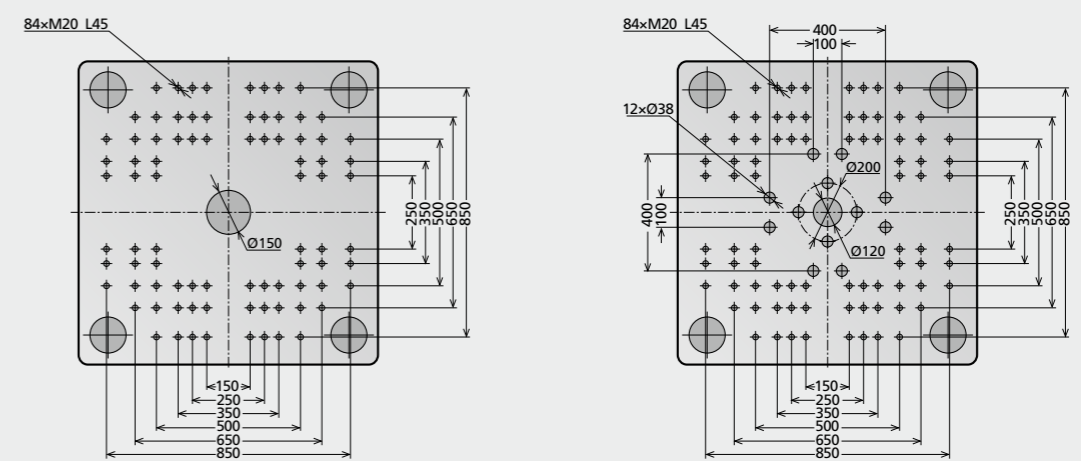


Japanese version

unit: mm

Fixed platen

Movable platen



Standard Equipment List

Injection Unit

- » Abrasion-resistant screw unit(open nozzle)
- » Nozzle safety guard
- » 6 Injection steps
- » 4 Pressure holding steps
- » 3 Dosing steps
- » 3 Back pressure steps
- » Screw suck back select(After holding/After dosing)
- » Screw suck back delay function
- » Injection delay function
- » Dosing delay function
- » Intrusion/filling by rotating screw
- » V/P switch over mode(position,time,pressure,speed)
- » Injection speed response mode select
- » Injection pressure segment control
- » Speed limit during holding pressure
- » Screw position setting(unit: 0.01mm)
- » Screw rotation speed setting
- » Holding pressure time setting
- » Mold open available during dosing
- » "Barrel heating closed-loop control (K/J type available)"
- » Barrel temperature holding function
- » Barrel temperature auto tuning function
- » Barrel pre-heating function
- » Barrel temperature synchronous control
- » Material overheating prevention function
- » Screw cold start prevention
- » Auto purge function

- » Screw rotation speed display
- » Setting for nozzle movement
- » Selection of nozzle retract (3 modes)
- » Nozzle contact device adjustable)
- » Nozzle centre adjustable
- » Feeding throat temperature closed-loop control
- » Injection unit swiveling device
- » Independent nozzle temperature control

Clamping unit

- » 6 mold moving steps
- » Mold safety protection
- » Mold setup mode
- » Injection compression function
- » Clamping force pre-release during cooling
- » Injection during clamping(Pre-injection)
- » 2 Step mold close/clamp process
- » In mold cut function (ejector activate when mold closed)
- » Clamping safety device(Mechanical and Electrical)
- » Adjustable moving platen support
- » Clamping force setting
- » Ejector device
- » Ejector function deactivatable
- » 3 Ejector steps
- » Ejector forward delay function
- » Ejector vibration function
- » Ejector A/B function(2 steps ejector stroke)
- » Eject on the fly

- » Ejector plate return signal confirmation
- » Cooling water distributor(6 sets up to 1500kN, 8 sets for others)
- » In mold ejector pin protection interface
- » Mold installation mode (Low speed mold move)
- » Needle shut off nozzle interface (one spare electrical interface)
- » Emergency stop(Operating and Non-operating sides)
- » Robot mounting layout
- » Central lubrication system
- » S-curve flexible control for mold movement
- » Hydraulic core interface(programmable)

Controller & Monitor

- » 15 inch TFT color touch screen
- » Mold profile data memory (up to 200 sets)
- » Alarm history
- » Data setting record
- » 3 USB R/W interface
- » Injection pressure speed curve display and record
- » Euromap 12 robot interface
- » Multi-language available(Chinese, German, English, Japanese etc.)
- » Metric/Imperial unit select
- » I/O monitor display
- » Printer interface(USB connector)
- » Production cycle monitor
- » Production profile monitor

- » Production data record(5000 cycles display, 100,000 cycles record)
- » Production data graphics
- » Quality parameters tolerance setting
- » Quality abnormal alarm
- » Cycle counter
- » Machine overview display
- » Main data setting fast access
- » Machine maintenance administration
- » Clamping force curve display
- » Barrel temperature monitor
- » Display cycle time sequence in each phase
- » 3 Color alarm lamp(red/yellow/green)
- » Alarm buzzer
- » Injection overflow prevention (HPM)
- » Display of actual performance data
- » Multi-action selectable during machine alarm

Others

- » Standard Zhafir color
- » Adjustable machine pads
- » 3 Power sockets
- » Standard hopper
- » Mold clamper
- » T-screw nuts(for T-slot use)
- » Tools box
- » Spare parts

