

**ZHAFIR PLASTICS MACHINERY GmbH**

Jubatus-Allee 8-10  
92263 Ebermannsdorf  
Germany  
Tel. +49-9438-9412-0  
Fax. +49-9438-9412-150  
E-Mail: [contact@zhafir.com](mailto:contact@zhafir.com)  
[www.zhafir.com](http://www.zhafir.com)

**NINGBO ZHAFIR PLASTICS MACHINERY CO., LTD**

No. 98 Guanhai Road, Chunxiao, Beilun, Ningbo, China 315800  
Tel. +86-574-86182986  
Fax. +86-574-86182977  
E-Mail: [contact@mail.zhafir.cn](mailto:contact@mail.zhafir.cn)  
[www.zhafir.cn](http://www.zhafir.cn)

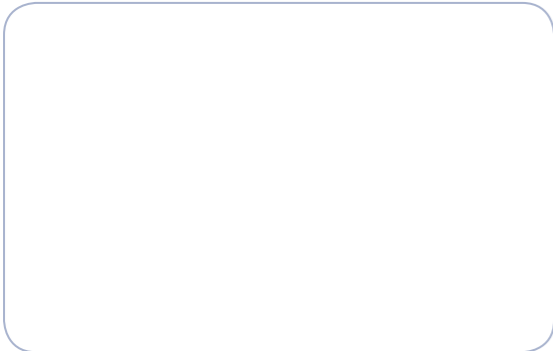
Zhafir Zeres Series



**ZERES**

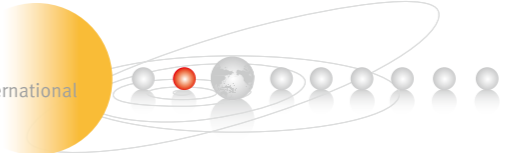
Specifications / International  
4500-13800kN

Zhafir Partner:



ZE-20180730-IV

A Member of Haitian International



We Extend Advantage.

# Technical data ZE4500

## CLAMPING UNIT

		ZE4500
Clamping force	kN	4500
Toggle stroke	mm	800
Min. mold height	mm	350
Max. mold height	mm	800
Max. mold opening stroke	mm	1600
Space between tie bars HxV	mm	870*870
Min. mold dimension	mm	570*570
Ejector stroke	mm	180
Ejector force	kN (tf)	98(10.0)
Mold platen dimension HxV	mm	1270x1270

	A	B	C	A	B	C	A	B	C	A	B	C
Screw diameter	55	60	65	60	65	70	65	70	80	75	80	90
Screw L/D ratio	21.8	20	18.5	21.6	20	18.6	21.5	20	17.5	21.3	20	17.8
Injection volume (theoretical)	617	735	863	792	929	1078	1068	1239	1619	1634	1860	2354
Injection weight (PS)	562	668	785	720	845	980	972	1127	1473	1487	1693	2142
Screw speed	300			250			210			185		
Plasticizing capacity (PS)	54	64	71	57	68	77	56	65	80	60	80	100
Plasticizing capacity (HDPE)							80 95 120			100 115 150		
Nozzle contact force	88.2			88.2			88.2			88.2		
Heating power	29.8			34.4			38			42		

## INJECTION UNIT

	1400	1700	2250	3350
Injection speed	160	160	160	160
Injection rate (PS)	346 411 483	411 483 560	483 560 731	643 731 926
Injection pressure	214 180 153	210 180 155	210 180 138	205 180 142
	2140 1800 1530	2100 1800 1550	2100 1800 1380	2050 1800 1420
Holding pressure	190 160 136	187 160 138	190 162 124	185 162 128
	1900 1600 1360	1870 1600 1380	1900 1620 1240	1850 1620 1280

## INJECTION UNIT

	1400h	1700h	-	-
Injection speed	250	250	-	-
Injection rate (PS)	540 642 754	642 754 875	- - -	- - -
Injection pressure	214 180 153	210 180 155	- - -	- - -
	2140 1800 1530	2100 1800 1550	- - -	- - -
Holding pressure	190 160 136	187 160 138	- - -	- - -
	1900 1600 1360	1870 1600 1380	- - -	- - -

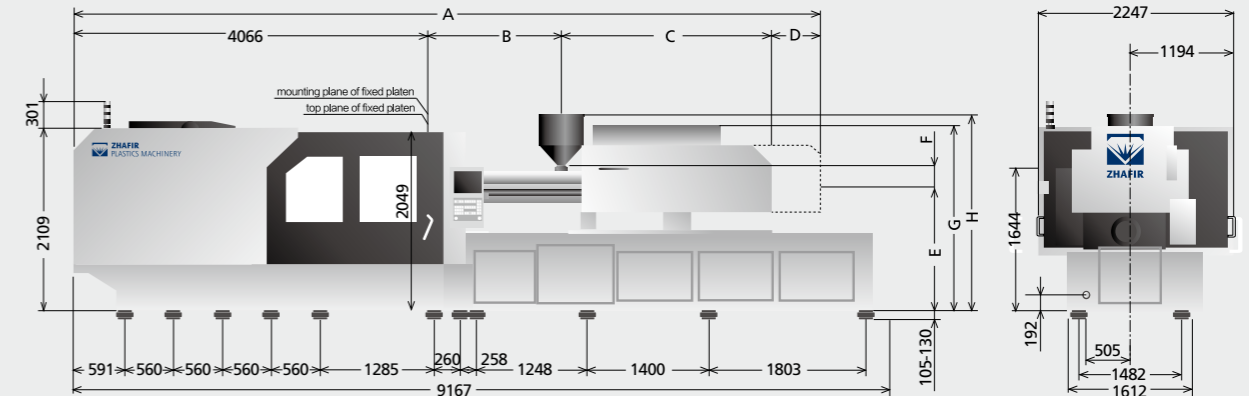
## SONSTIGES

Connection power	kW/A	1400:71/118 1400h:100/168	1700:83/139 1700h:102/171	77/129	105/176
Pressure	Mpa	14	14	14	14
Flow	L/min	158	158	158	158
Oil tank	L	280	280	280	280
Hopper capacity	L	50	50	100	100
Machine dimension	m	9.36x2.25x2.40	9.36x2.25x2.40	9.36x2.25x2.40	9.52x2.25x2.72
Machine weight	t	27	27	27.4	27.9

We reserve the right to make changes as a result of further technical advantages.

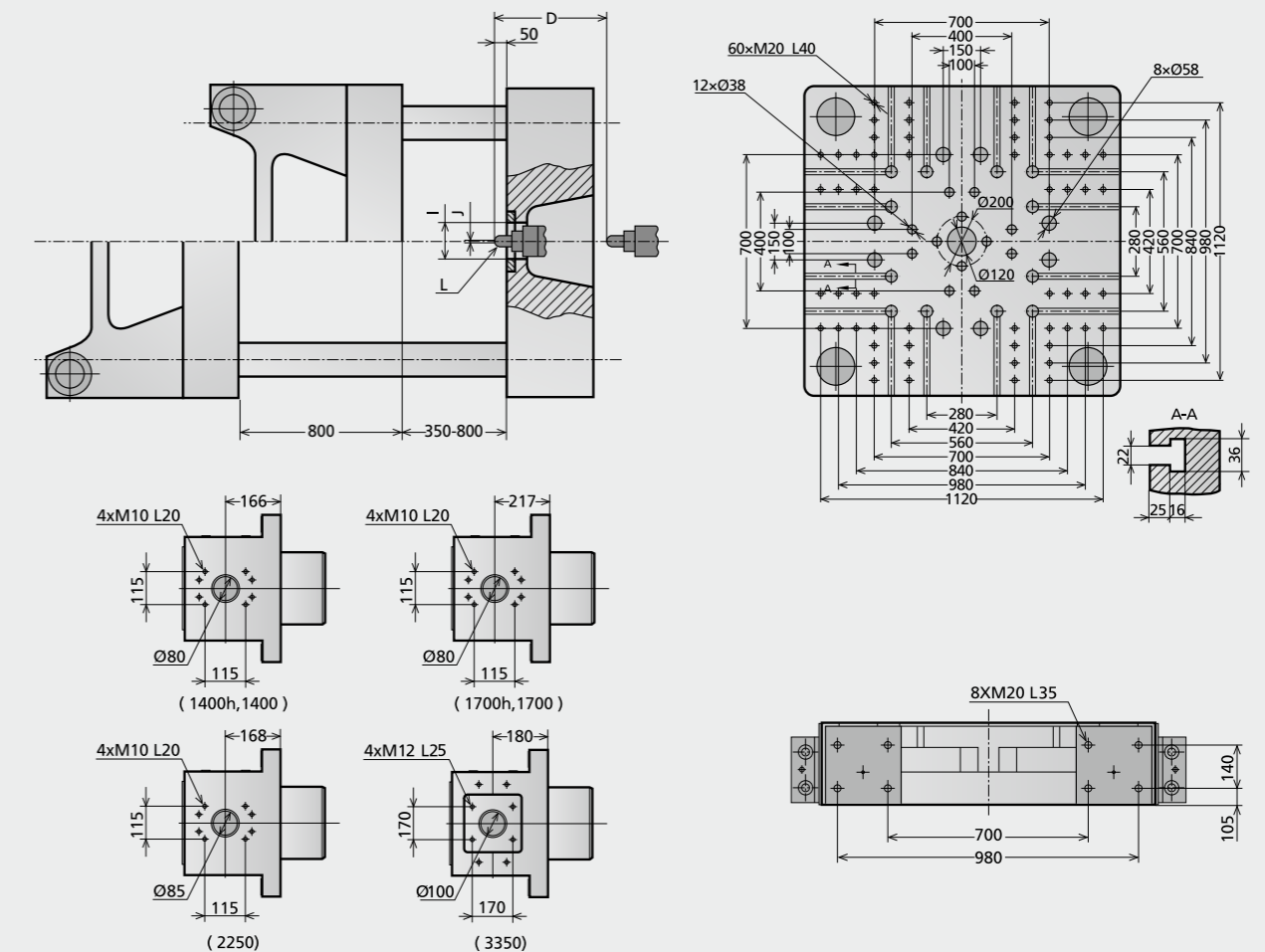
## Machine dimensions ZE4500

unit: mm



## Platen dimensions ZE4500

unit: mm



	A	B	C	D	E	F	G	H	I	J	L
3350	9512	1812	2914	720	1430	308	2092	2731	Φ200	Φ4	SR15
2250	8943	1606	2551	720	1430	270	2056	2391	Φ200	Φ4	SR15
1700h,1700	8566	1527	2413	560	1430	248	2136	2260	Φ200	Φ3	SR10
1400h,1400	8367	1361	2380	560	1430	248	2136	2260	Φ200	Φ3	SR10

# Technical data ZE5500

## CLAMPING UNIT

		ZE5500
Clamping force	kN	5500
Toggle stroke	mm	900
Min. mold height	mm	380
Max. mold height	mm	880
Max. mold opening stroke	mm	1780
Space between tie bars HxV	mm	970*970
Min. mold dimension	mm	630*630
Ejector stroke	mm	180
Ejector force	kN (tf)	137.2 (14.0)
Mold platen dimension HxV	mm	1400*1400

	A	B	C	A	B	C	A	B	C	A	B	C
Screw diameter	55	60	65	60	65	70	65	70	80	75	80	90
Screw L/D ratio	21.8	20	18.5	21.6	20	18.6	21.5	20	17.5	21.3	20	17.8
Injection volume (theoretical)	617	735	863	792	929	1078	1068	1239	1619	1634	1860	2354
Injection weight (PS)	562	668	785	720	845	980	972	1127	1473	1487	1693	2142
Screw speed	300			250			210			185		
Plasticizing capacity (PS)	54	64	71	57	68	77	56	65	80	60	80	100
Plasticizing capacity (HDPE)				80	90	105	80	95	120	100	115	150
Nozzle contact force	88.2(9.0)			88.2(9.0)			88.2			88.2		
Heating power	29.8			34.4			38			42		

## INJECTION UNIT

	1400	1700	2250	3350
Injection speed	160	160	160	160
Injection rate (PS)	346	411	483	643
Injection pressure	214	180	153	205
	2140	1800	1530	2050
Holding pressure	190	160	136	185
	1900	1600	1360	1850

## INJECTION UNIT

	1400h	1700h	-	-
Injection speed	250	250	-	-
Injection rate (PS)	540	642	754	-
Injection pressure	214	180	153	-
	2140	1800	1530	-
Holding pressure	190	160	136	-
	1900	1600	1360	-

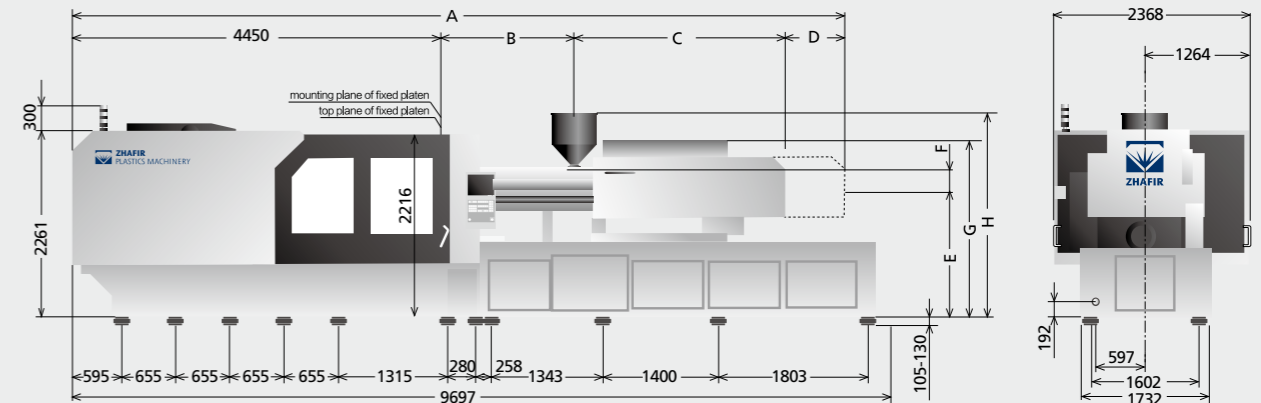
## SONSTIGES

Connection power	kW/A	1400:71/118 1700:83/139	1400h:100/168 1700h:102/171	77/129	105/176
Pressure	Mpa	14	14	14	14
Flow	L/min	210	210	210	210
Oil tank	L	326	326	326	326
Hopper capacity	L	50	50	50	100
Machine dimension	m	9.89x2.37x2.55	9.89x2.37x2.55	9.89x2.37x2.55	9.89x2.37x2.81
Machine weight	t	34.3	32.7	35.6	36.1

We reserve the right to make changes as a result of further technical advantages.

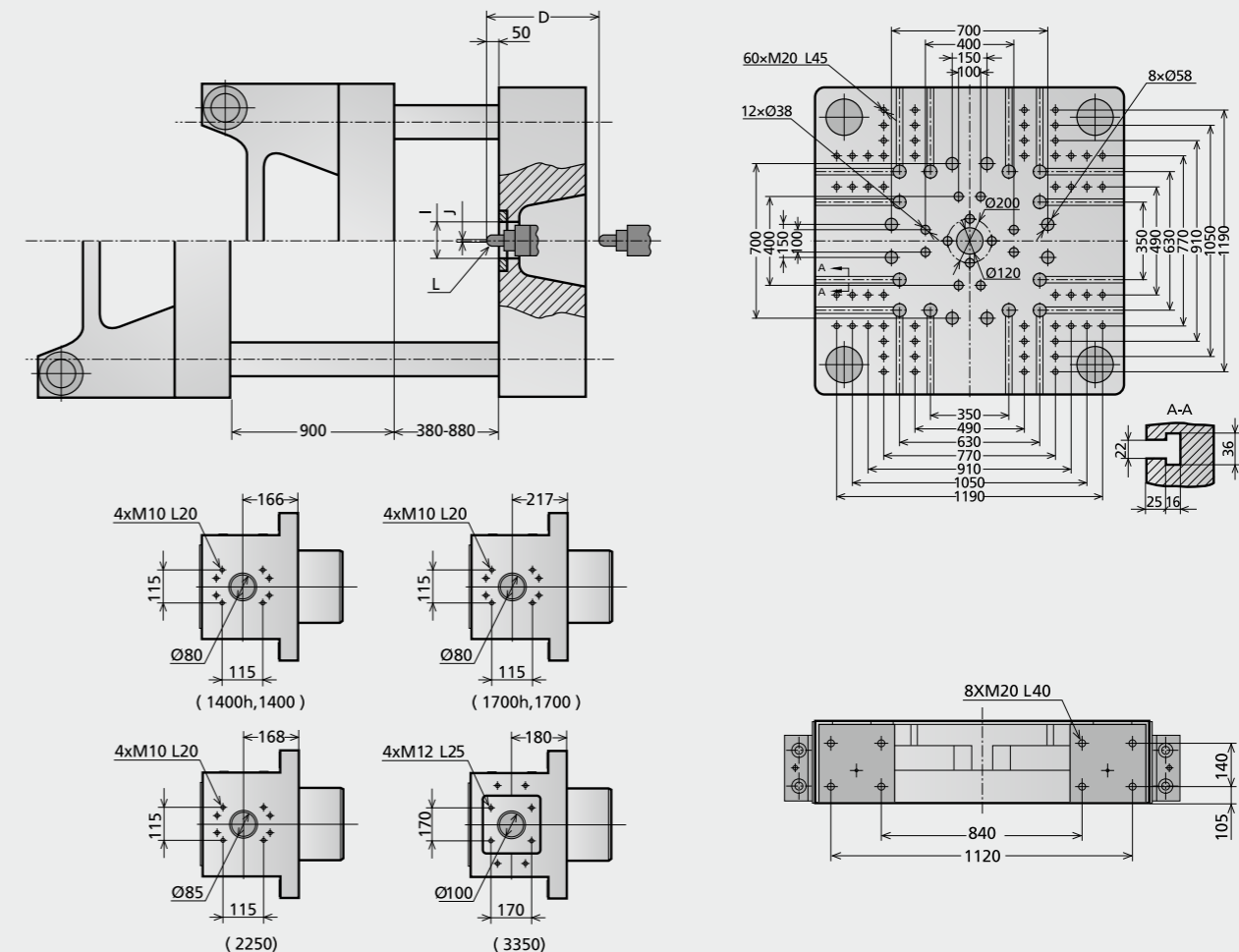
## Machine dimensions ZE5500

unit: mm



## Platen dimensions ZE5500

unit: mm



	A	B	C	D	E	F	G	H	I	J	L
3350	9896	1812	2914	720	1516	308	2178	2817	Ø250	Ø4	SR15
2250	9331	1610	2551	720	1516	270	2142	2477	Ø250	Ø4	SR15
1700	8955	1527	2418	560	1516	248	2202	2362	Ø250	Ø3	SR10
1400	8752	1361	2381	560	1516	248	2202	2362	Ø250	Ø3	SR10

# Technical data ZE6500

## CLAMPING UNIT

		ZE6500
Clamping force	kN	6500
Toggle stroke	mm	1000
Min. mold height	mm	420
Max. mold height	mm	1000
Max. mold opening stroke	mm	2000
Space between tie bars HxV	mm	1080*1080
Min. mold dimension	mm	700*700
Ejector stroke	mm	200
Ejector force	kN (tf)	196 (20.0)
Mold platen dimension HxV	mm	1550*1550

	A	B	C	A	B	C	A	B	C	A	B	C
Screw diameter	60	65	70	65	70	80	75	80	90	80	90	100
Screw L/D ratio	21.6	20	18.6	21.5	20	17.5	21.3	20	17.8	24.8	22	19.8
Injection volume (theoretical)	792	929	1078	1068	1239	1619	1634	1860	2354	2262	2863	3534
Injection weight (PS)	720	845	980	972	1127	1473	1487	1693	2142	2058	2605	3216
Screw speed	250			210			185			160		
Plasticizing capacity (PS)	57	68	77	56	65	80	60	80	100	78	98	120
Plasticizing capacity (HDPE)	80	90	105	80	95	120	100	115	150	116	146	180
Nozzle contact force	88.2(9.0)			88.2			88.2			88.2		
Heating power	34.4			38			42			54.3		

## INJECTION UNIT

	1700	2250	3350	5200									
Injection speed	160	160	160	160									
Injection rate (PS)	411	483	560	483	560	731	643	731	926	731	926	1143	
Injection pressure	Mpa	210	180	155	210	180	138	205	180	142	227	180	145
	bar	2100	1800	1550	2100	1800	1380	2050	1800	1420	2270	1800	1450
Holding pressure	Mpa	187	160	138	190	162	124	185	162	128	204	162	131
	bar	1870	1600	1380	1900	1620	1240	1850	1620	1280	2040	1620	1310

## INJECTION UNIT

	1700h	-	-	-
Injection speed	250	-	-	-
Injection rate (PS)	642	754	875	-
Injection pressure	Mpa	210	180	155
	bar	2100	1800	1550
Holding pressure	Mpa	187	160	138
	bar	1870	1600	1380

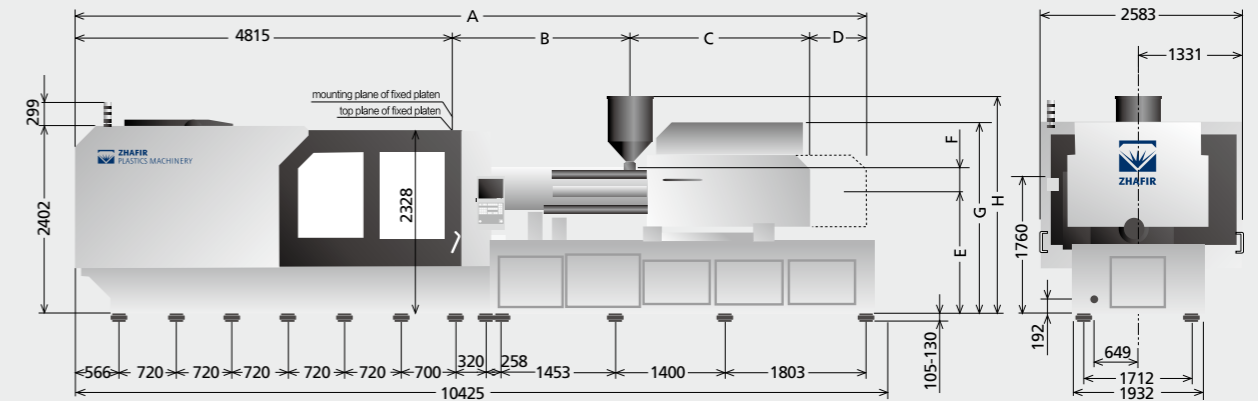
## SONSTIGES

Connection power	kW/A	1700:83/139 1700h:102/171	77/129	105/176	148/249
Pressure	Mpa	14	14	14	14
Flow	L/min	290	290	290	290
Oil tank	L	425	425	425	425
Hopper capacity	L	50	100	100	100
Machine dimension	m	10.38x2.58x2.69	10.38x2.58x2.69	10.38x2.58x2.85	10.38x2.58x2.77
Machine weight	t	42.8	43.1	43.5	45

We reserve the right to make changes as a result of further technical advantages.

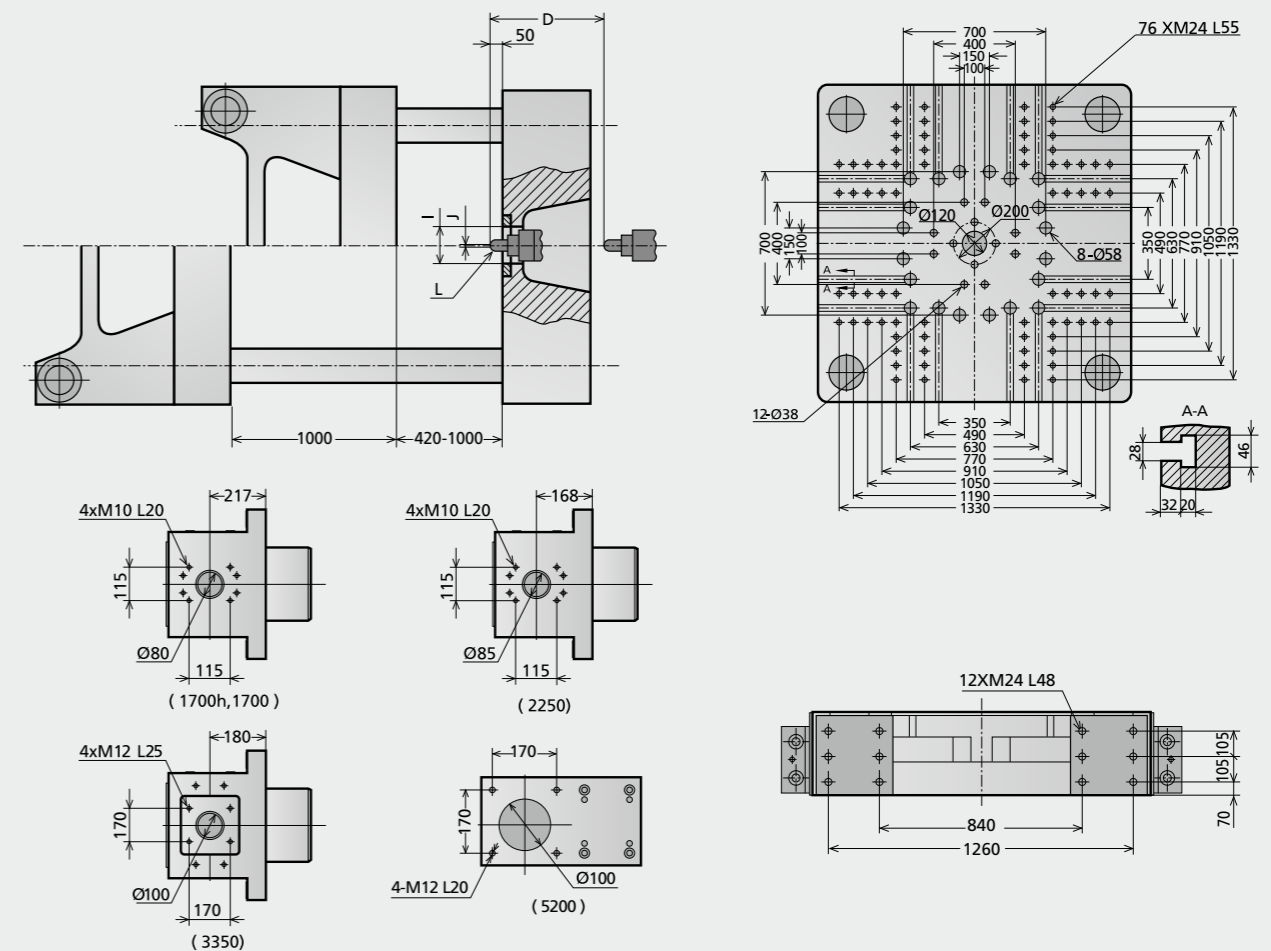
## Machine dimensions ZE6500

unit: mm



## Platen dimensions ZE6500

unit: mm



	A	B	C	D	E	F	G	H	I	J	L
5200	10102	2265	2303	720	1565	308	2453	2777	Ø250	Ø4	SR15
3350	10264	1814	2914	720	1565	308	2228	2866	Ø250	Ø4	SR15
2250	9695	1610	2551	720	1565	270	2191	2526	Ø250	Ø4	SR15
1700	9320	1527	2418	560	1565	248	2251	2393	Ø250	Ø3	SR10

# Technical data ZE8000

## CLAMPING UNIT

		ZE8000
Clamping force	kN	8000
Toggle stroke	mm	1000
Min. mold height	mm	420
Max. mold height	mm	1000
Max. mold opening stroke	mm	2000
Space between tie bars HxV	mm	1080*1080
Min. mold dimension	mm	700*700
Ejector stroke	mm	200
Ejector force	kN (tf)	196 (20.0)
Mold platen dimension HxV	mm	1550*1550

	A	B	C	A	B	C	A	B	C	A	B	C
Screw diameter	60	65	70	65	70	80	75	80	90	80	90	100
Screw L/D ratio	21.6	20	18.6	21.5	20	17.5	21.3	20	17.8	24.8	22	19.8
Injection volume (theoretical)	792	929	1078	1068	1239	1619	1634	1860	2354	2262	2863	3534
Injection weight (PS)	720	845	980	972	1127	1473	1487	1693	2142	2058	2605	3216
Screw speed	250			210			185			160		
Plasticizing capacity (PS)	57	68	77	56	65	80	60	80	100	78	98	120
Plasticizing capacity (HDPE)	80	90	105	80	95	120	100	115	150	116	146	180
Nozzle contact force	88.2(9.0)			88.2			88.2			88.2		
Heating power	34.4			38			42			54.3		

## INJECTION UNIT

	1700	2250	3350	5200
Injection speed	160	160	160	160
Injection rate (PS)	411	483	560	731
Injection pressure	Mpa	210	180	155
	bar	2100	1800	1550
Holding pressure	Mpa	187	160	138
	bar	1870	1600	1380

## INJECTION UNIT

	1700h	-	-	-
Injection speed	250	-	-	-
Injection rate (PS)	642	754	875	-
Injection pressure	Mpa	210	180	155
	bar	2100	1800	1550
Holding pressure	Mpa	187	160	138
	bar	1870	1600	1380

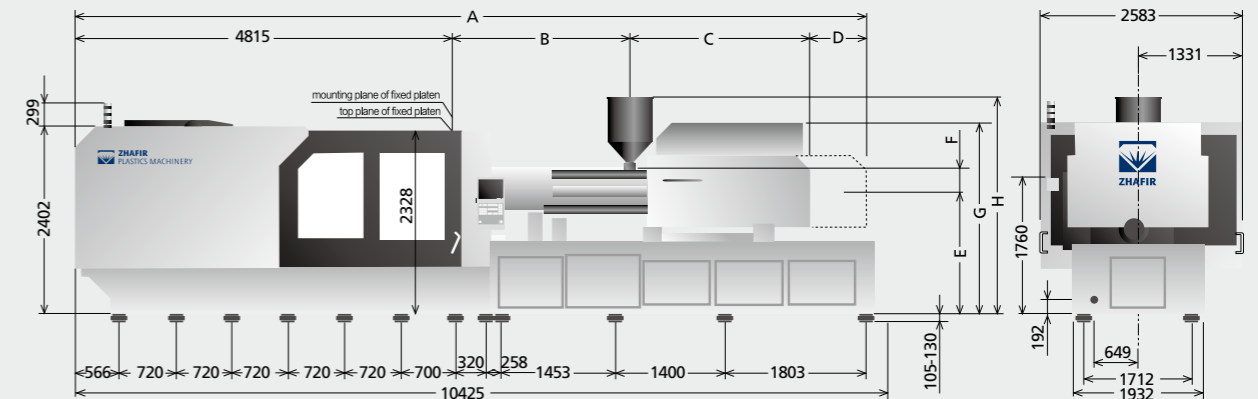
## SONSTIGES

	1700:83/139 1700h:102/171	77/129	105/176	148/249
Connection power	kW/A			
Pressure	Mpa	14	14	14
Flow	L/min	290	290	290
Oil tank	L	425	425	425
Hopper capacity	L	50	100	100
Machine dimension	m	10.38x2.58x2.69	10.38x2.58x2.69	10.38x2.58x2.77
Machine weight	t	42.8	43	43.5

We reserve the right to make changes as a result of further technical advantages.

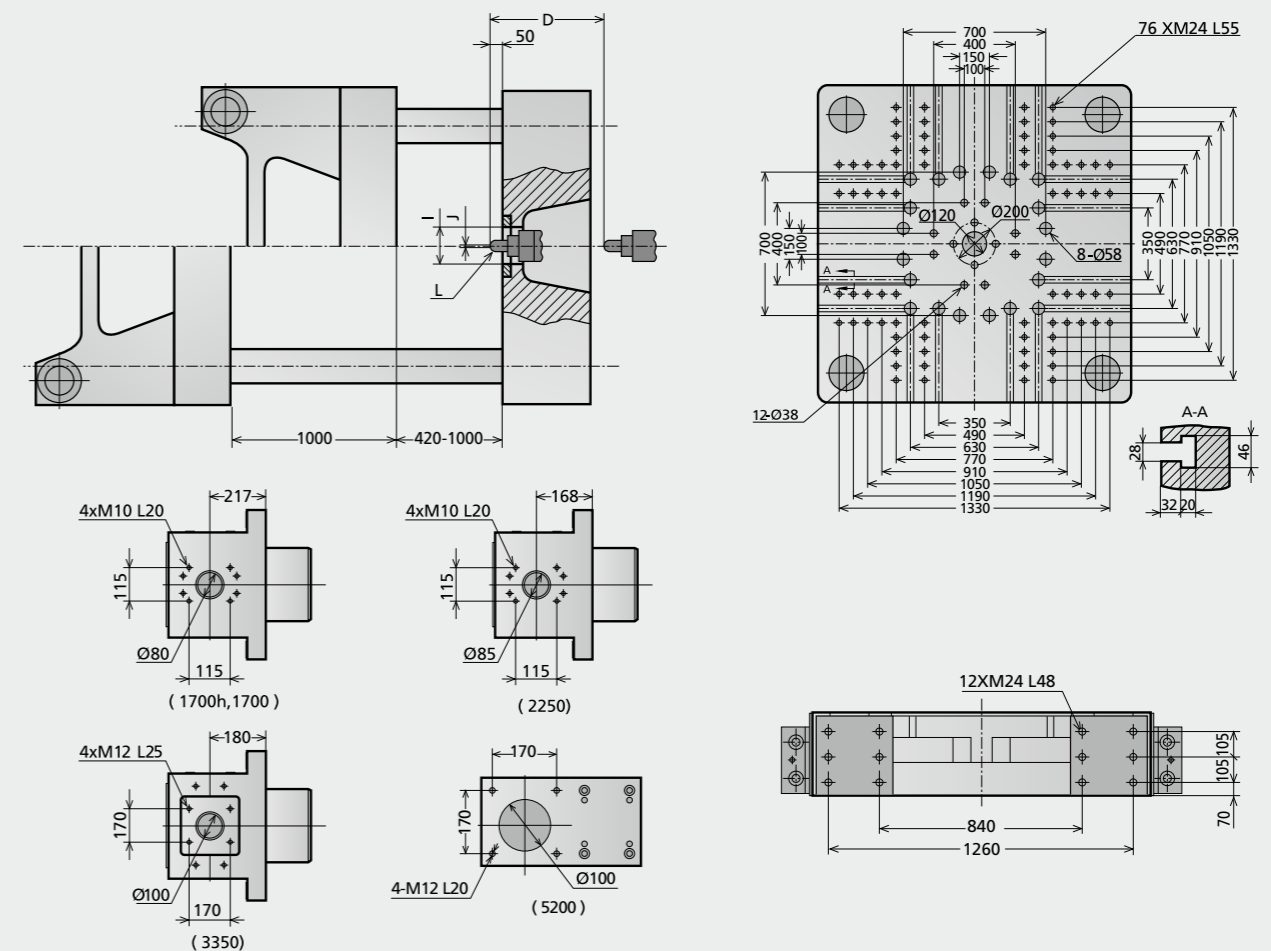
## Machine dimensions ZE8000

unit: mm



## Platen dimensions ZE8000

unit: mm



	A	B	C	D	E	F	G	H	I	J	L
5200	10102	2265	2303	720	1565	308	2453	2777	Ø250	Ø4	SR15
3350	10264	1814	2914	720	1565	308	2228	2866	Ø250	Ø4	SR15
2250	9695	1610	2551	720	1565	270	2191	2526	Ø250	Ø4	SR15
1700	9320	1527	2418	560	1565	248	2251	2393	Ø250	Ø3	SR10

# Technical data ZE9000

## CLAMPING UNIT

		ZE9000
Clamping force	kN	9000
Toggle stroke	mm	1200
Min. mold height	mm	450
Max. mold height	mm	1100
Max. mold opening stroke	mm	2300
Space between tie bars HxV	mm	1160*1160
Min. mold dimension	mm	770*770
Ejector stroke	mm	200
Ejector force	kN (tf)	230(23.5)
Mold platen dimension HxV	mm	1695*1695

	A	B	C	A	B	C	A	B	C	A	B	C
Screw diameter	65	70	80	75	80	90	80	90	100	90	100	110
Screw L/D ratio	21.5	20	17.5	21.3	20	17.8	24.8	22	19.8	24.4	22	20
Injection volume (theoretical)	1068	1239	1619	1634	1860	2354	2262	2863	3534	2990	3691	4467
Injection weight (PS)	972	1127	1473	1487	1693	2142	2058	2605	3216	2721	3359	4065
Screw speed	210			185			160			150		
Plasticizing capacity (PS)	56	65	80	60	80	100	78	98	120	99	120	145
Plasticizing capacity (HDPE)	80	95	120	100	115	150	116	146	180	147	180	214
Nozzle contact force	88.2(9.0)			88.2			88.2			107.8		
Heating power	38			42			54.3			75.6		

## INJECTION UNIT

	2250	3350	5200	7000
Injection speed	160	160	160	150
Injection rate (PS)	483	560	731	868
Injection pressure	210	180	138	234
	2100	1800	1380	2340
Holding pressure	190	162	124	200
	1900	1620	1240	2000

## INJECTION UNIT

Injection speed	mm/s	-	-	-
Injection rate (PS)	g/s	-	-	-
Injection pressure	Mpa	-	-	-
	bar	-	-	-
Holding pressure	Mpa	-	-	-
	bar	-	-	-

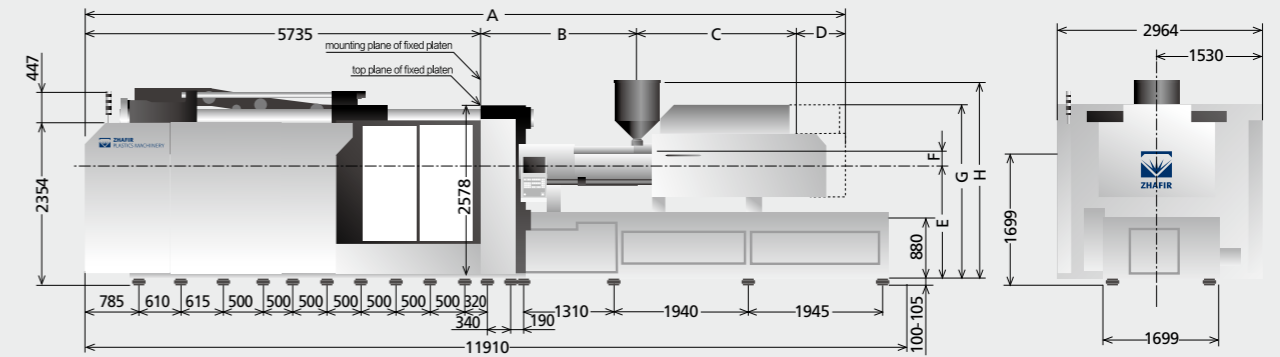
## SONSTIGES

Connection power	kW/A	77/129	105/176	148/249	164/275
Pressure	Mpa	17.5	17.5	17.5	17.5
Flow	L/min	290	290	290	290
Oil tank	L	425	425	425	425
Hopper capacity	L	50	100	100	100
Machine dimension	m	11.91x2.96x2.8	11.91x2.96x2.93	11.91x2.96x2.84	11.91x2.96x4.21
Machine weight	t	65	66	68.5	71

We reserve the right to make changes as a result of further technical advantages.

## Machine dimensions ZE9000

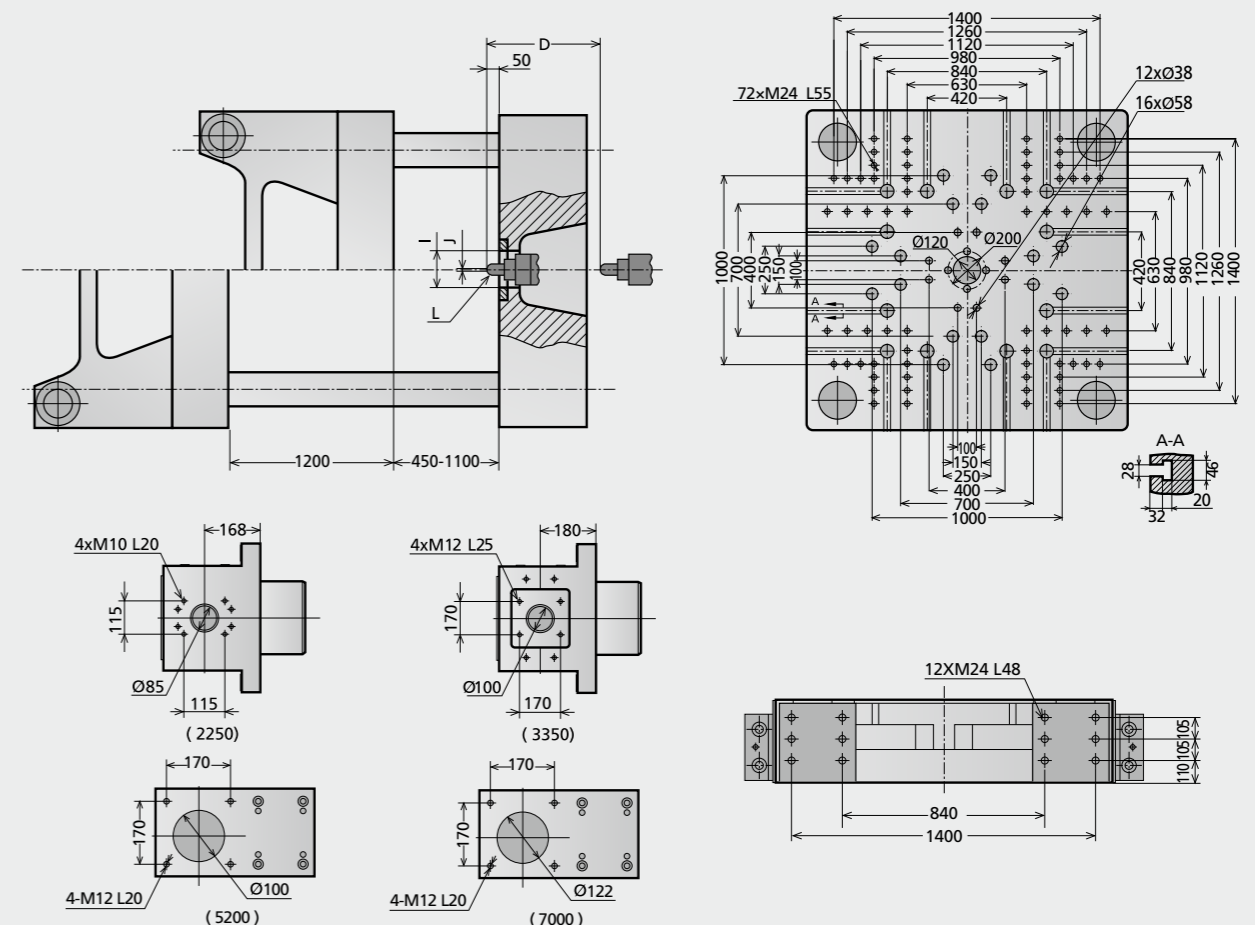
unit: mm



Note: The above-mentioned figures of the machine do not apply to the injection unit of 7000 and above.

## Platen dimensions ZE9000

unit: mm



	A	B	C	D	E	F	G	H	I	J	L
7000	11690	2503	2732	720	1630	233	2545	4208	Φ250	Φ6	SR20
5200	11023	2257	2311	720	1630	215	2518	2838	Φ250	Φ4	SR15
3350	11180	1818	2907	720	1630	307	2293	2933	Φ250	Φ4	SR15
2250	10621	1615	2551	720	1630	270	2130	2595	Φ250	Φ4	SR15

# Technical data ZE10800

## CLAMPING UNIT

		ZE10800
Clamping force	kN	10800
Toggle stroke	mm	1300
Min. mold height	mm	500
Max. mold height	mm	1200
Max. mold opening stroke	mm	2500
Space between tie bars HxV	mm	1320*1320
Min. mold dimension	mm	870*870
Ejector stroke	mm	200
Ejector force	kN (tf)	230(23.5)
Mold platen dimension HxV	mm	1885*1885

	A	B	C	A	B	C	A	B	C	A	B	C																								
Screw diameter	75	80	90	80	90	100	90	100	110	100	110	120																								
Screw L/D ratio	21.3	20	17.8	24.8	22	19.8	24.4	22	20	24.2	22	20.2																								
Injection volume (theoretical)	1634	1860	2354	2262	2863	3534	2990	3691	4467	4006	4847	5768																								
Injection weight (PS)	1487	1693	2142	2058	2605	3216	2721	3359	4065	3645	4411	5249																								
Screw speed	185			160			150			150																										
Plasticizing capacity (PS)	60	80	100	78	98	120	99	120	145	130	156	181																								
Plasticizing capacity (HDPE)	100	115	150	116	146	180	147	180	214	190	228	260																								
Nozzle contact force	88.2			88.2			107.8			107.8																										
Heating power	42			54.3			75.6			82.8																										
<b>INJECTION UNIT</b>	<b>3350</b>			<b>5200</b>			<b>7000</b>			<b>9200</b>																										
Injection speed	160			160			150			150																										
Injection rate (PS)	643	731	926	731	926	1143	868	1072	1297	1072	1297	1543																								
Injection pressure	205			180			142			227			180			145			234			190			157			230			190			160		
Holding pressure	185			162			128			204			162			131			200			162			134			202			167			141		
	1850			1620			1280			2040			1620			1310			2000			1620			1340			2020			1670			1410		
<b>INJECTION UNIT</b>	-			-			-			-			-			-			-			-			-			-			-			-		
Injection speed	-			-			-			-			-			-			-			-			-			-			-			-		
Injection rate (PS)	-			-			-			-			-			-			-			-			-			-			-			-		
Injection pressure	-			-			-			-			-			-			-			-			-			-			-			-		
Holding pressure	-			-			-			-			-			-			-			-			-			-			-			-		

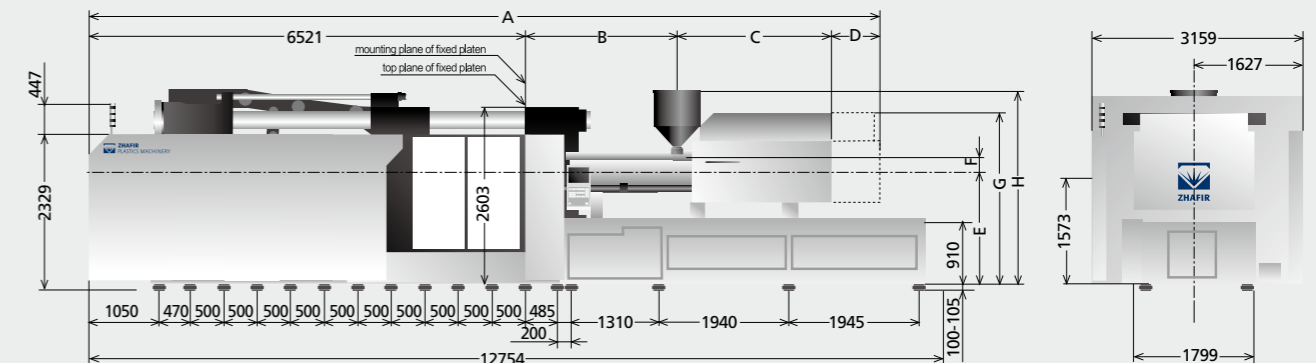
## SONSTIGES

Connection power	kW/A	105/176	148/249	164/275	200/336
Pressure	Mpa	17.5	17.5	17.5	17.5
Flow	L/min	290	290	290	290
Oil tank	L	425	425	425	425
Hopper capacity	L	100	100	100	200
Machine dimension	m	12.75x3.16x2.96	12.75x3.16x2.87	12.75x3.16x4.24	12.75x3.16x4.24
Machine weight	t	71	72	75	75

We reserve the right to make changes as a result of further technical advantages.

## Machine dimensions ZE10800

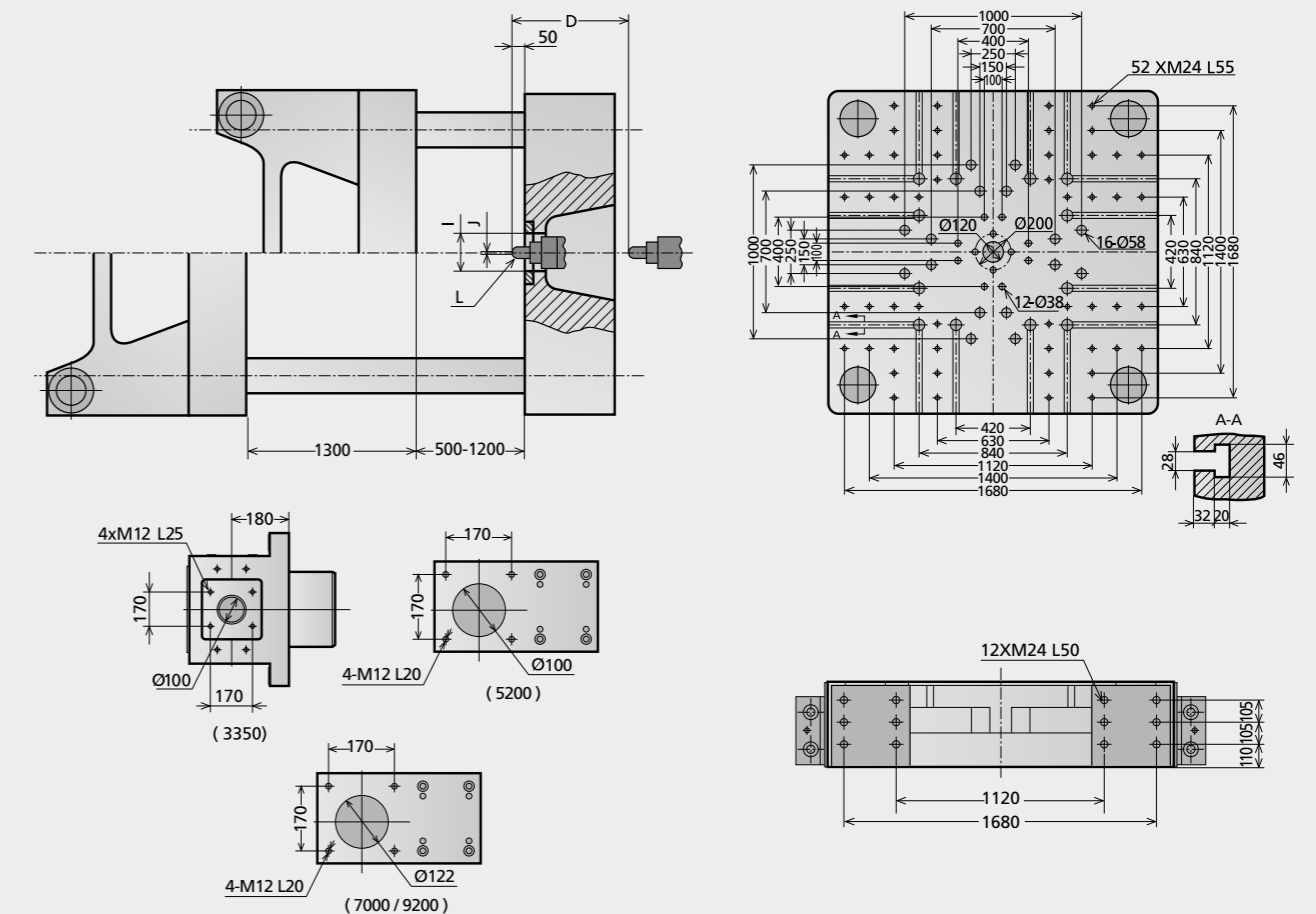
unit: mm



Note: The above-mentioned figures of the machine do not apply to the injection unit of 7000 and above.

## Platen dimensions ZE10800

unit: mm



	A	B	C	D	E	F	G	H	I	J	L
9200	12476	2730	2734	720	1660	233	2575	4238	Φ250	Φ6	SR20
7000	12705	2504	2734	720	1660	233	2575	4238	Φ250	Φ6	SR20
5200	11809	2257	2311	720	1660	215	2548	2872	Φ250	Φ4	SR15
3350	11976	1821	2914	720	1660	307	2322	2961	Φ250	Φ4	SR15

# Technical data ZE13800

## CLAMPING UNIT

		ZE13800
Clamping force	kN	13800
Toggle stroke	mm	1500
Min. mold height	mm	650
Max. mold height	mm	1300
Max. mold opening stroke	mm	2800
Space between tie bars HxV	mm	1550*1450
Min. mold dimension	mm	1030*970
Ejector stroke	mm	250
Ejector force	kN (tf)	300(30.6)
Mold platen dimension HxV	mm	2250*2180

	A	B	C	A	B	C	A	B	C
Screw diameter	80	90	100	90	100	110	100	110	120
Screw L/D ratio	24.8	22	19.8	24.4	22	20	24.2	22	20.2
Injection volume (theoretical)	2262	2863	3534	2990	3691	4467	4006	4847	5768
Injection weight (PS)	2058	2605	3216	2721	3359	4065	3645	4411	5249
Screw speed	160			150			150		
Plasticizing capacity (PS)	78	98	120	99	120	145	130	156	181
Plasticizing capacity (HDPE)	116	146	180	147	180	214	190	228	260
Nozzle contact force	88.2			107.8			107.8		
Heating power	54.3			75.6			82.8		
<b>INJECTION UNIT</b>	<b>5200</b>			<b>7000</b>			<b>9200</b>		
Injection speed	160			150			150		
Injection rate (PS)	731	926	1143	868	1072	1297	1072	1297	1543
Injection pressure	Mpa			Mpa			Mpa		
	bar			bar			bar		
Holding pressure	Mpa			Mpa			Mpa		
	bar			bar			bar		
<b>INJECTION UNIT</b>	-			-			-		
Injection speed	mm/s			mm/s			mm/s		
Injection rate (PS)	g/s			g/s			g/s		
Injection pressure	Mpa			Mpa			Mpa		
	bar			bar			bar		
Holding pressure	Mpa			Mpa			Mpa		
	bar			bar			bar		

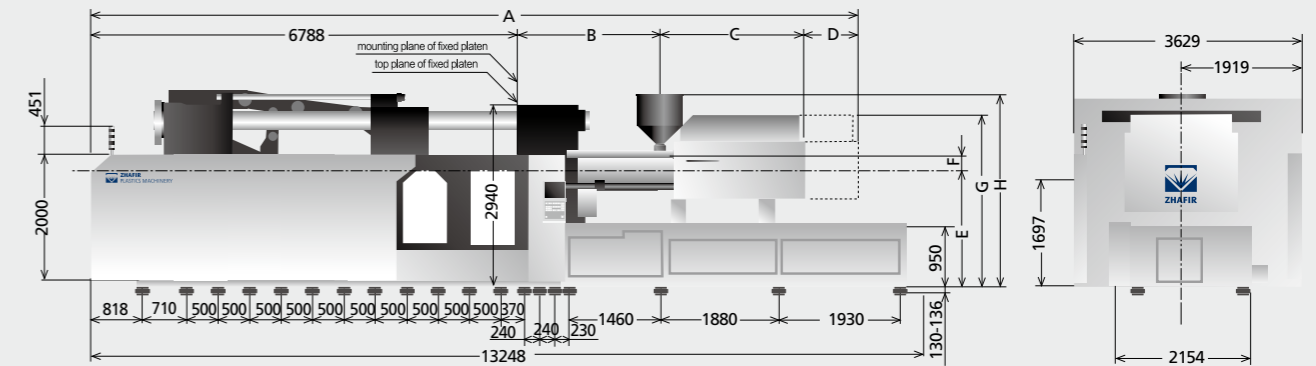
## SONSTIGES

Connection power	kW/A	148/249	164/275	200/336
Pressure	Mpa	17.5	17.5	17.5
Flow	L/min	353	353	353
Oil tank	L	508	508	508
Hopper capacity	L	100	100	200
Machine dimension	m	13.25x3.63x2.87	13.25x3.63x4.43	13.25x3.63x4.43
Machine weight	t	116	120	120

We reserve the right to make changes as a result of further technical advantages.

## Machine dimensions ZE13800

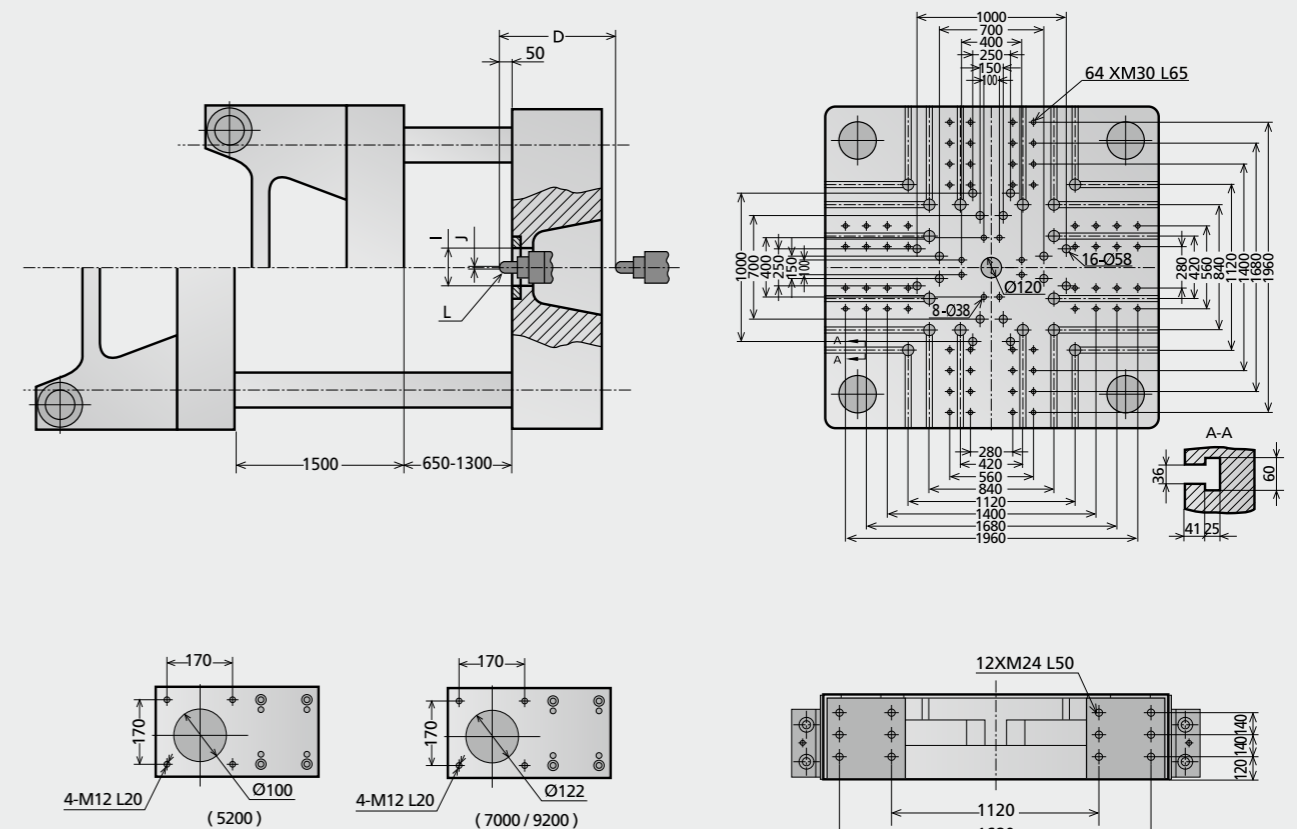
unit: mm



Note: The above-mentioned figures of the machine do not apply to the injection unit of 7000 and above.

## Platen dimensions ZE13800

unit: mm



	A	B	C	D	E	F	G	H	I	J	L
9200	13102	2733	2731	850	1850	233	2765	4428	Φ315	Φ6	SR20
7000	12873	2504	2731	850	1850	233	2765	4428	Φ315	Φ6	SR20
5200	12205	2262	2305	850	1850	215	2548	2872	Φ315	Φ4	SR15



# Platen Layout ZE4500

# Platen Layout ZE5500

## European version

## European version

Fixed platen

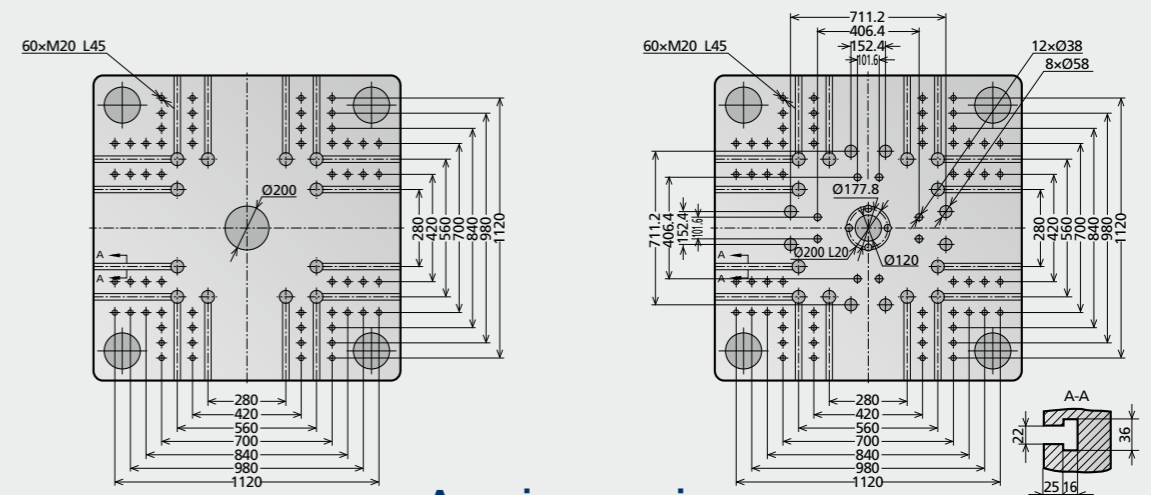
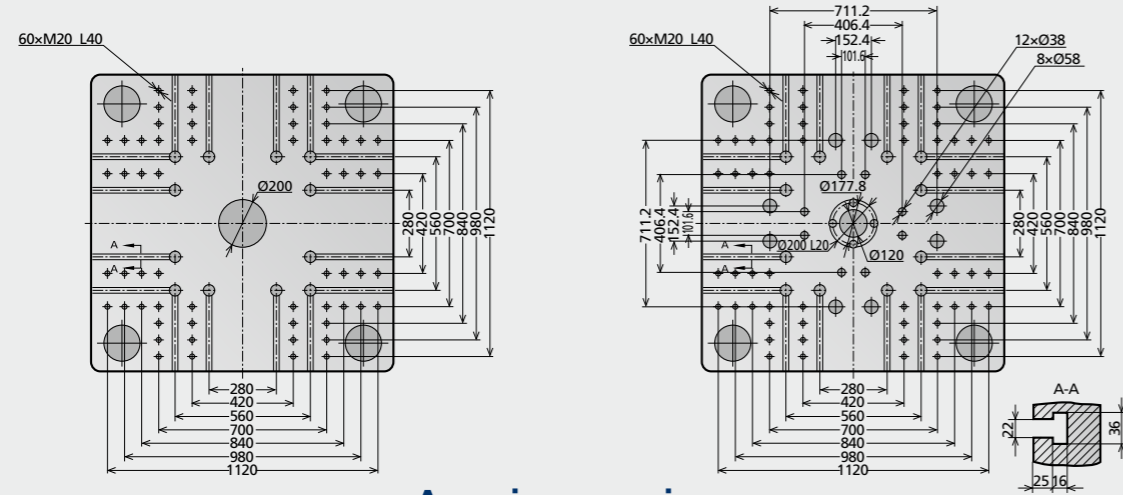
Movable platen

Fixed platen

Movable platen

unit: mm

unit: mm



## American version

## American version

Fixed platen

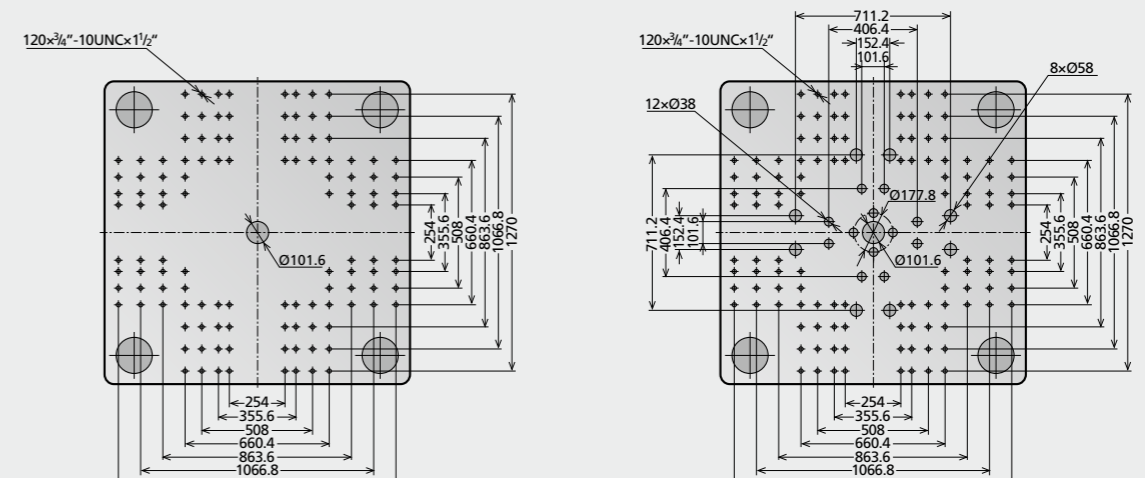
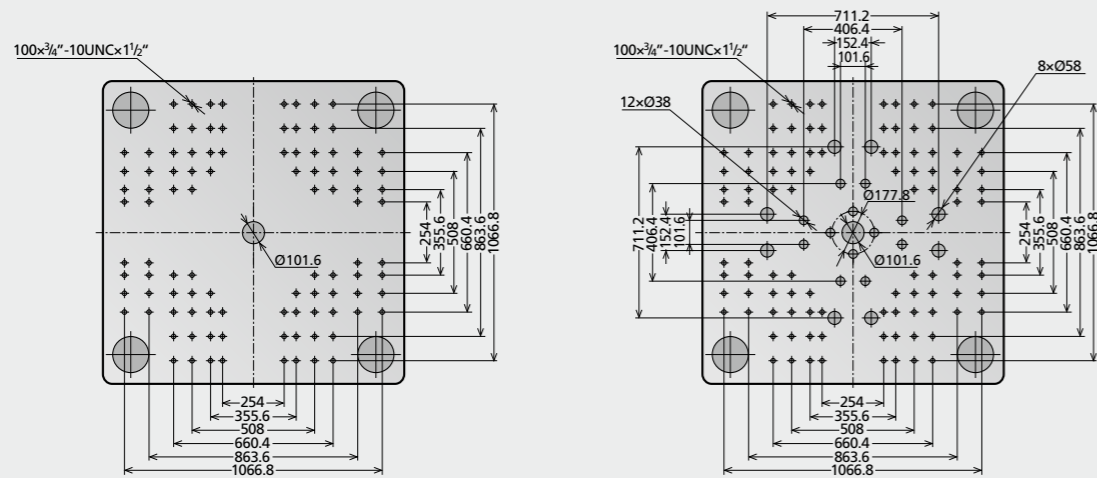
Movable platen

Fixed platen

Movable platen

unit: mm

unit: mm



## Japanese version

## Japanese version

Fixed platen

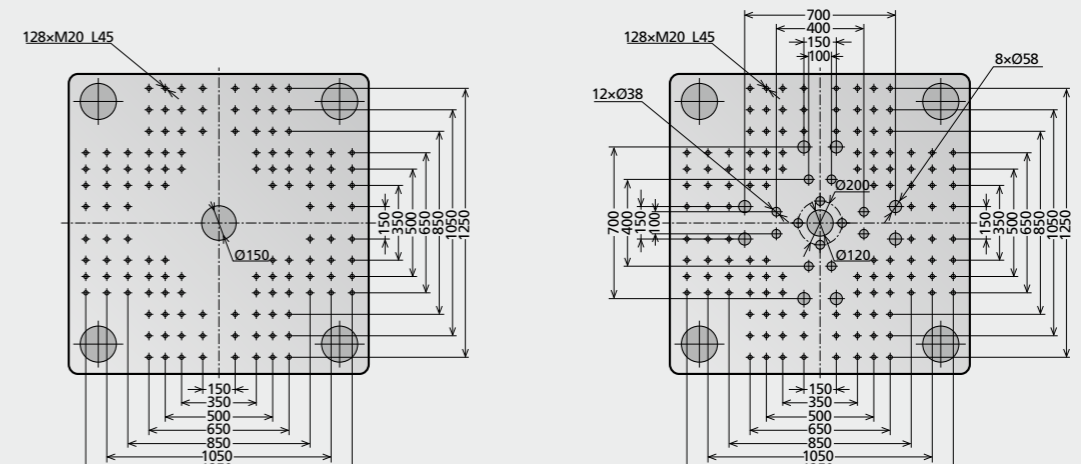
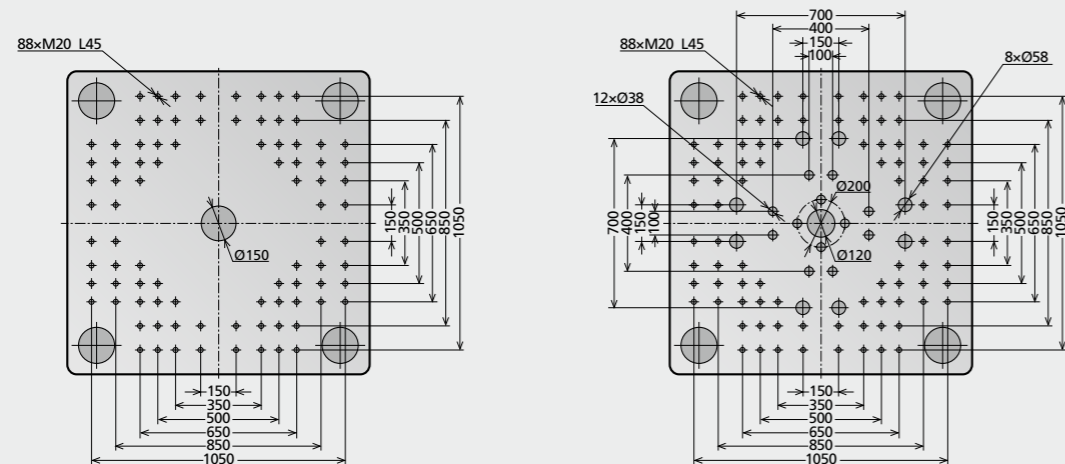
Movable platen

Fixed platen

Movable platen

unit: mm

unit: mm



# Platen Layout ZE6500

# Platen Layout ZE8000

European version

European version

unit: mm

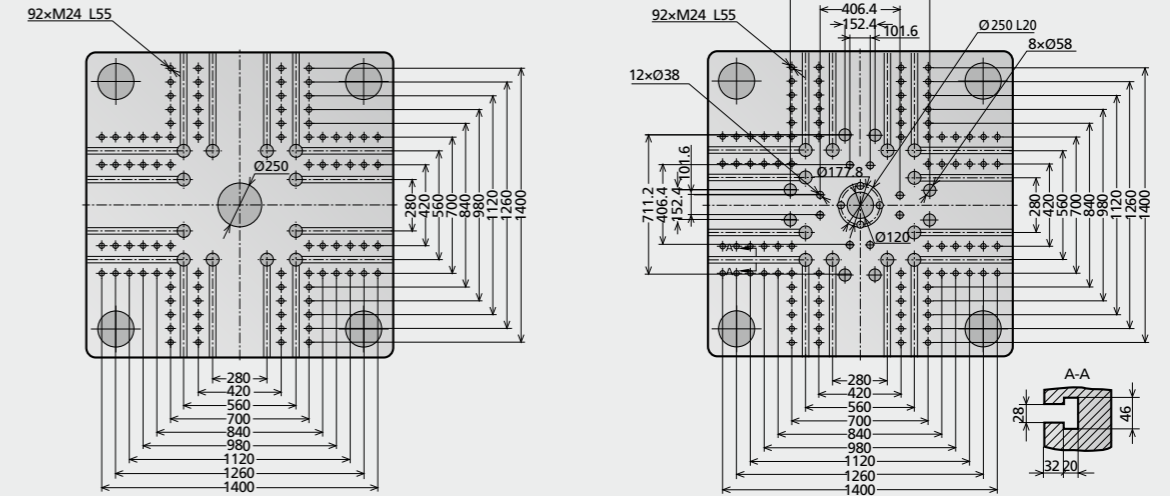
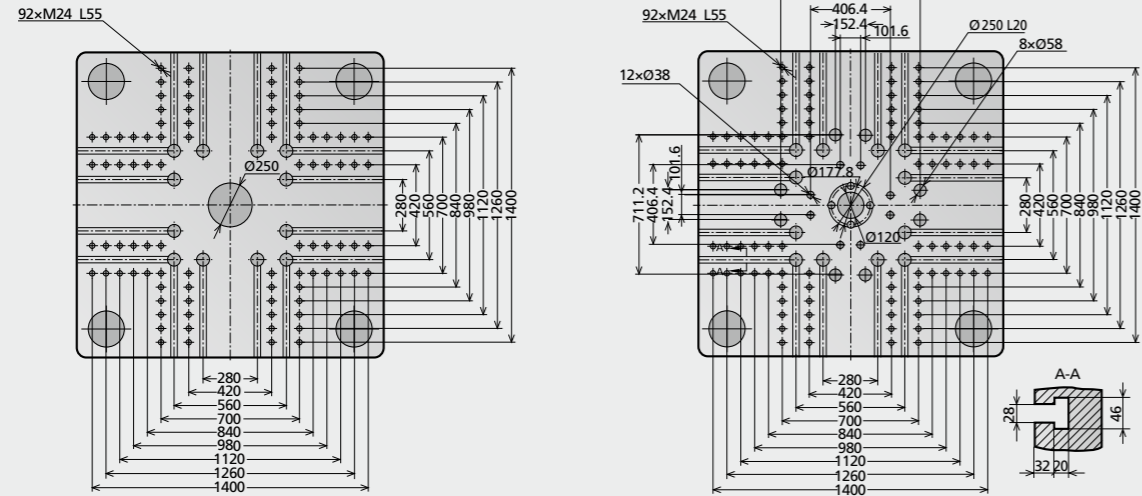
unit: mm

Fixed platen

Movable platen

Fixed platen

Movable platen



American version

American version

unit: mm

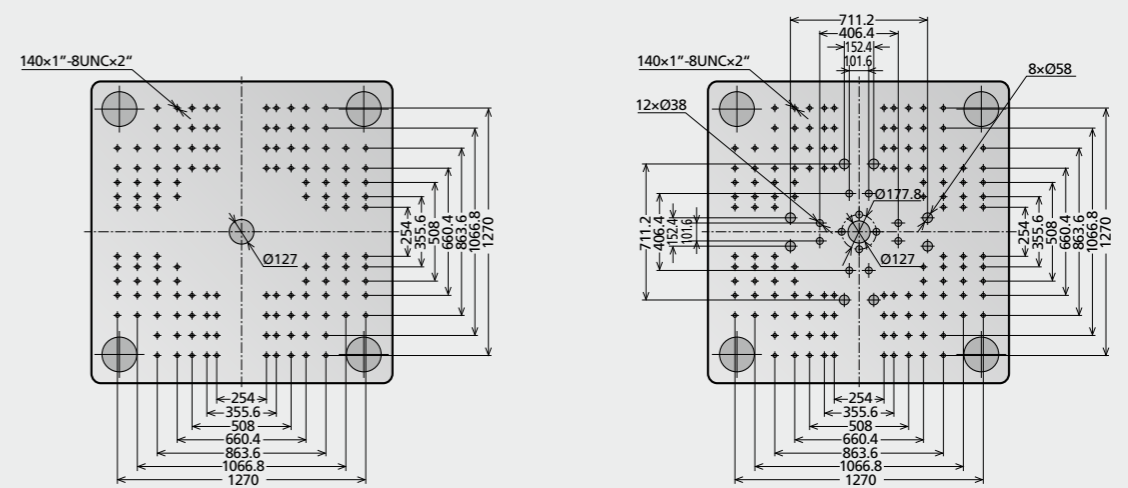
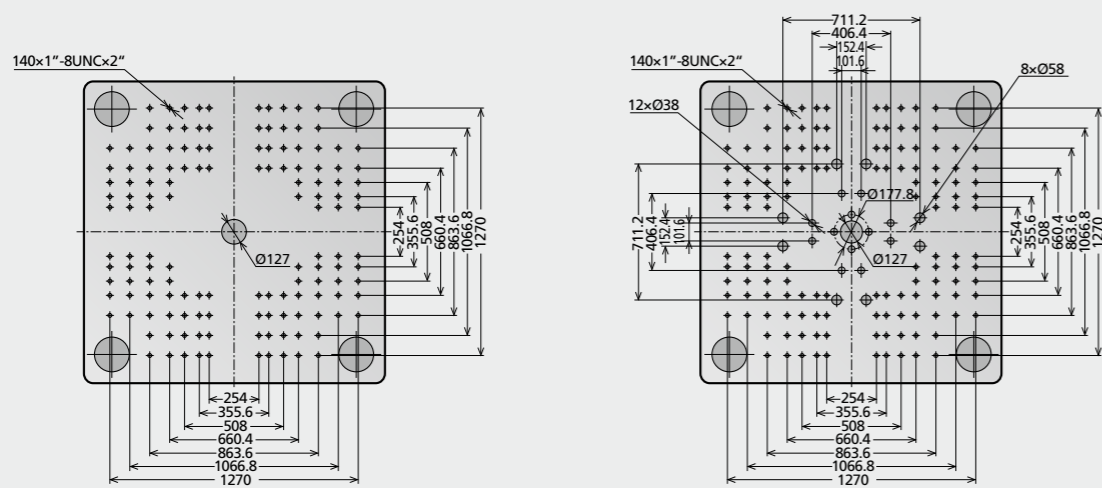
unit: mm

Fixed platen

Movable platen

Fixed platen

Movable platen



Japanese version

Japanese version

unit: mm

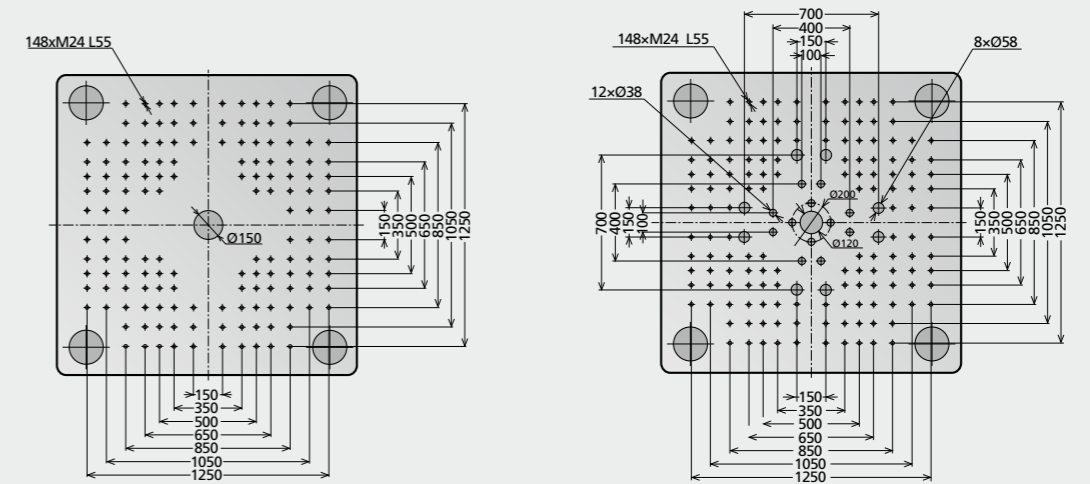
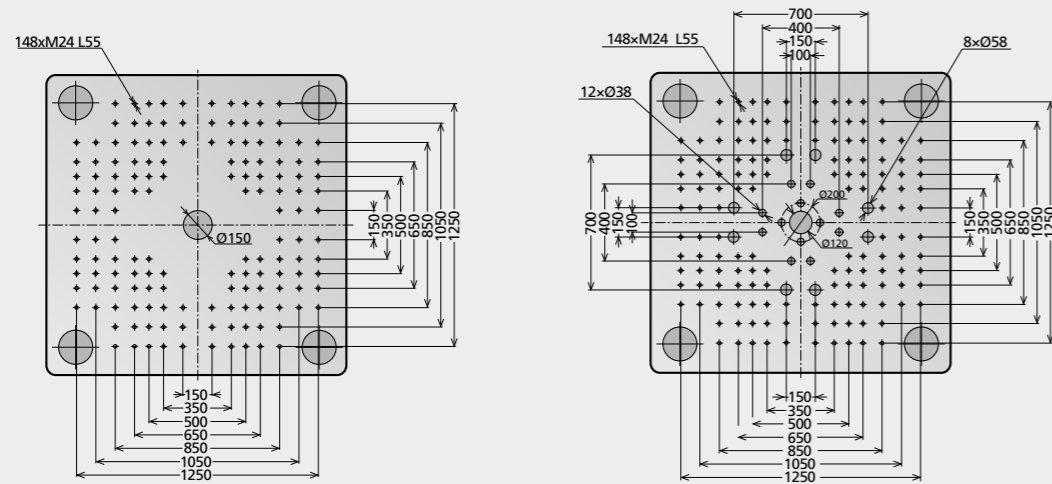
unit: mm

Fixed platen

Movable platen

Fixed platen

Movable platen



# Platen Layout ZE9000

# Platen Layout ZE10800

European version

European version

Fixed platen

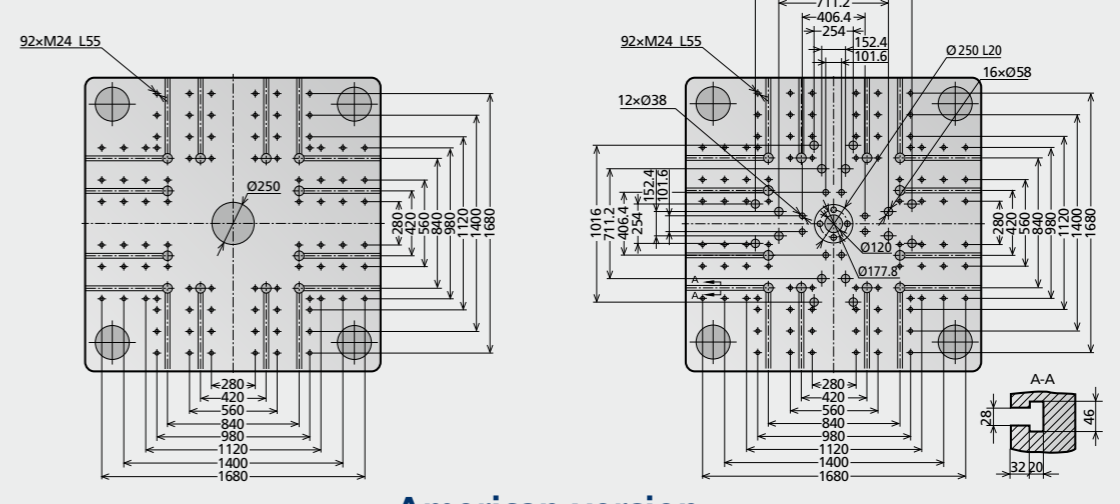
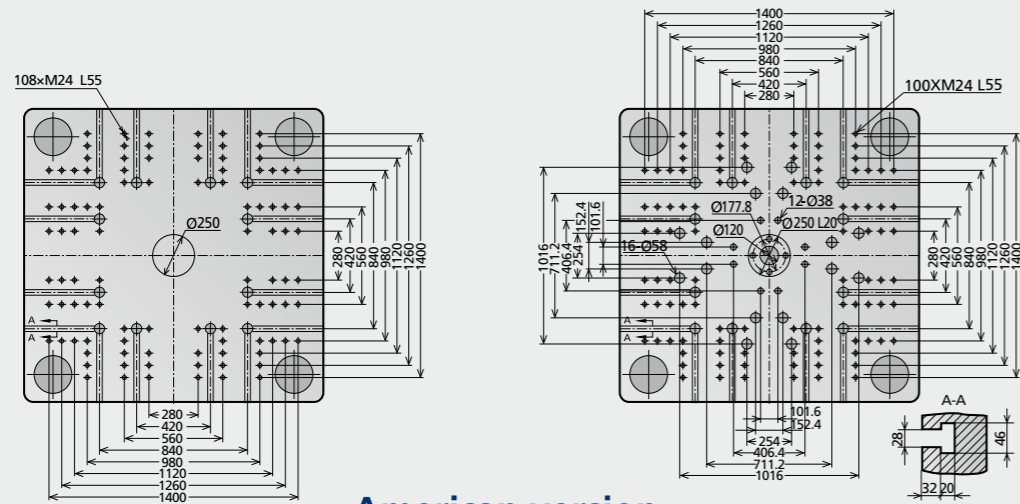
Movable platen

Fixed platen

Movable platen

unit: mm

unit: mm



American version

American version

Fixed platen

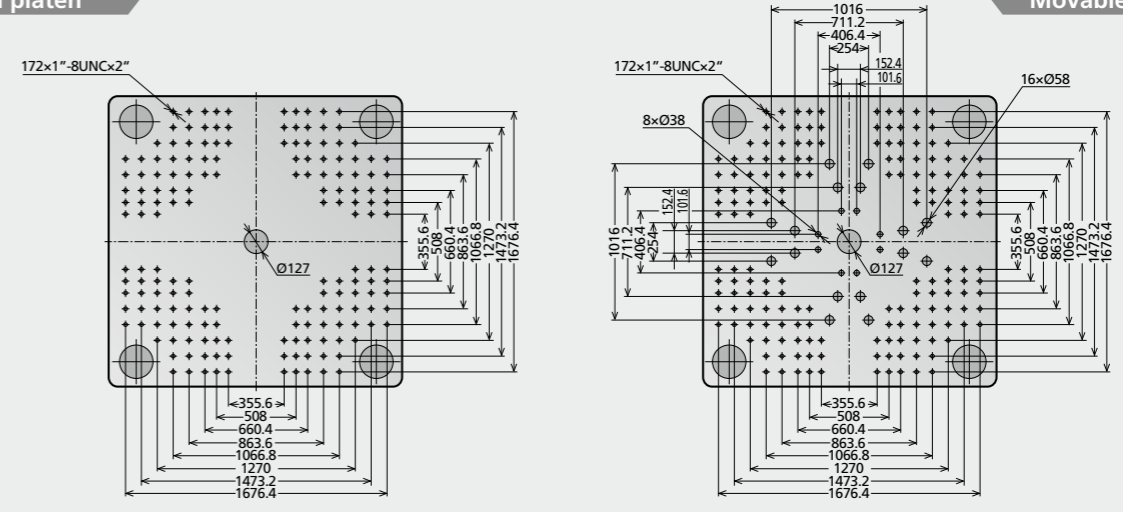
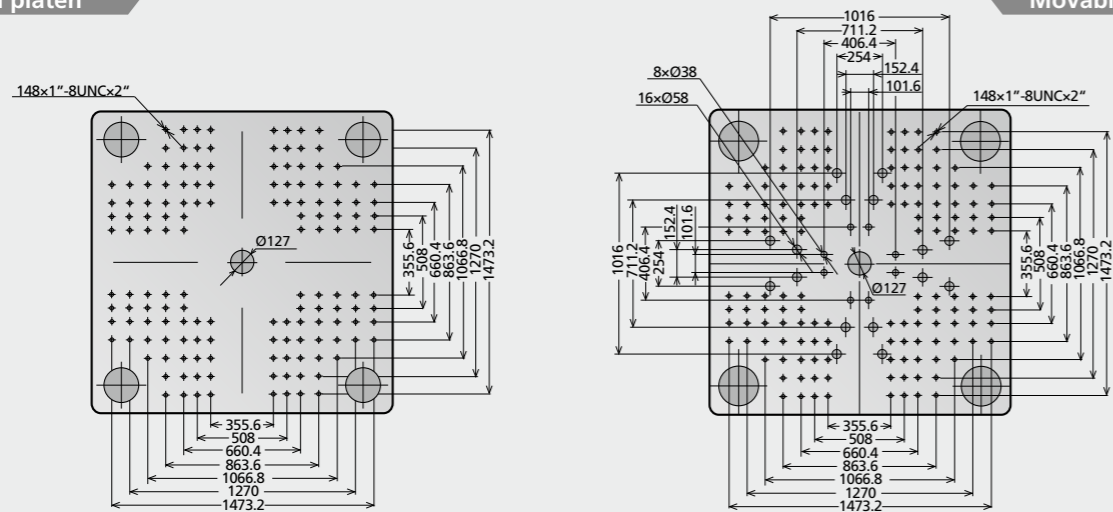
Movable platen

Fixed platen

Movable platen

unit: mm

unit: mm



Japanese version

Japanese version

Fixed platen

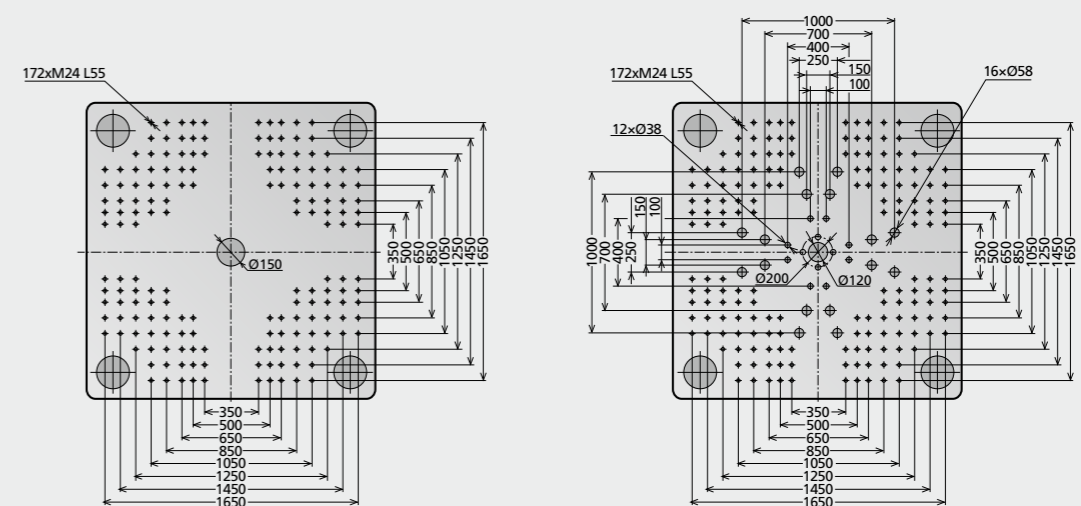
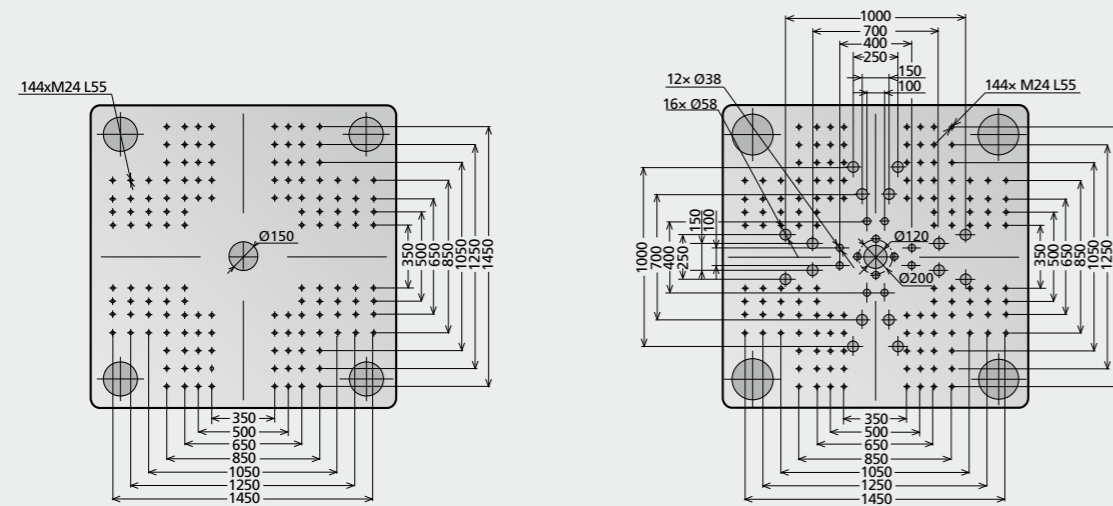
Movable platen

Fixed platen

Movable platen

unit: mm

unit: mm





# Standard Equipment List

## Injection Unit

- » Abrasion-resistant screw unit(open nozzle)
- » Nozzle safety guard
- » 6 Injection steps
- » 4 Pressure holding steps
- » 3 Dosing steps
- » 3 Back pressure steps
- » Screw suck back select(After holding/After dosing)
- » Screw suck back delay function
- » Injection delay function
- » Dosing delay function
- » Intrusion/filling by rotating screw
- » V/P switch over mode(position,time,pressure,speed)
- » Injection speed response mode select
- » Injection pressure segment control
- » Speed limit during holding pressure
- » Screw position setting(unit: 0.01mm)
- » Screw rotation speed setting
- » Holding pressure time setting
- » Mold open available during dosing
- » "Barrel heating closed-loop control (K/J type available)"
- » Barrel temperature holding function
- » Barrel temperature auto tuning function
- » Barrel pre-heating function
- » Barrel temperature synchronous control
- » Material overheating prevention function
- » Screw cold start prevention
- » Auto purge function

- » Screw rotation speed display
- » Setting for nozzle movement
- » Selection of nozzle retract (3 modes)
- » Nozzle contact device adjustable)
- » Nozzle centre adjustable
- » Feeding throat temperature closed-loop control
- » Injection unit swiveling device
- » Independent nozzle temperature control

## Clamping unit

- » 6 mold moving steps
- » Mold safety protection
- » Mold setup mode
- » Injection compression function
- » Clamping force pre-release during cooling
- » Injection during clamping(Pre-injection)
- » 2 Step mold close/clamp process
- » In mold cut function (ejector activate when mold closed)
- » Clamping safety device(Mechanical and Electrical)
- » Adjustable moving platen support
- » Clamping force setting
- » Ejector device
- » Ejector function deactivatable
- » 3 Ejector steps
- » Ejector forward delay function
- » Ejector vibration function
- » Ejector A/B function(2 steps ejector stroke)
- » Eject on the fly

- » Ejector plate return signal confirmation
- » Cooling water distributor(8 sets up to 8000kN, 12 sets for others)
- » In mold ejector pin protection interface
- » Mold installation mode (Low speed mold move)
- » Needle shut off nozzle interface (one spare electrical interface)
- » Emergency stop(Operating and Non-operating sides)
- » Robot mounting layout
- » Central lubrication system
- » S-curve flexible control for mold movement
- » Hydraulic core interface(programmable)

## Controller & Monitor

- » 15 inch TFT color touch screen
- » Mold profile data memory (up to 200 sets)
- » Alarm history
- » Data setting record
- » 3 USB R/W interface
- » Injection pressure speed curve display and record
- » Euromap 12 robot interface
- » Multi-language available(Chinese, German, English, Japanese etc.)
- » Metric/Imperial unit select
- » I/O monitor display
- » Printer interface(USB connector)
- » Production cycle monitor
- » Production profile monitor

- » Production data record(5000 cycles display, 100,000 cycles record)
- » Production data graphics
- » Quality parameters tolerance setting
- » Quality abnormal alarm
- » Cycle counter
- » Machine overview display
- » Main data setting fast access
- » Machine maintenance administration
- » Clamping force curve display
- » Barrel temperature monitor
- » Display cycle time sequence in each phase
- » 3 Color alarm lamp(red/yellow/green)
- » Alarm buzzer
- » Injection overflow prevention (HPM)
- » Display of actual performance data
- » Multi-action selectable during machine alarm

## Others

- » Standard Zhafir color
- » Adjustable machine pads
- » 3 Power sockets
- » Standard hopper
- » Mold clamper
- » T-screw nuts(for T-slot use)
- » Tools box
- » Spare parts

