



BI-WEEKLY PRODUCT UPDATES

New Inventory Depletion to Stations Feature!

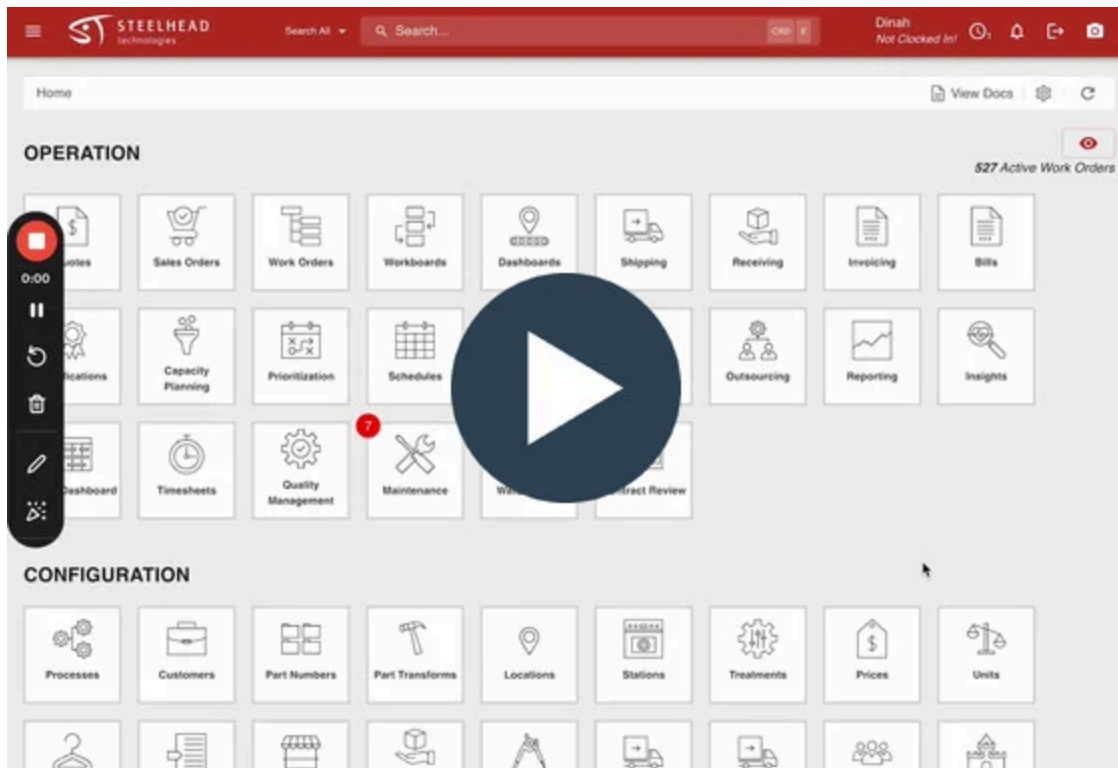
Manage your inventory by adding, draining, and refilling inventory items to a station

Increase visibility and traceability to your inventory by using this new inventory feature that allows you to keep track of your inventory per station! You can add inventory items to a station which depletes the item out of your inventory on-hand.

Other features of this update include:

- Drain and refill inventory items to a station.
 - Removes and replaces the inventory item currently in the station.
 - Can add different inventory types.
- Add more inventory items to station
 - Can add different inventory types to the already existing inventory within the station.
 - Helps maintain an accurate quantity of inventory items both in the station and inventory storage.

- Ability to view the amount of inventory in the station and on-hand.
- Auto-deplete inventory by automatically depleting the oldest inventory.
- View recent inventory depletions.



Quality Management CSV Export!

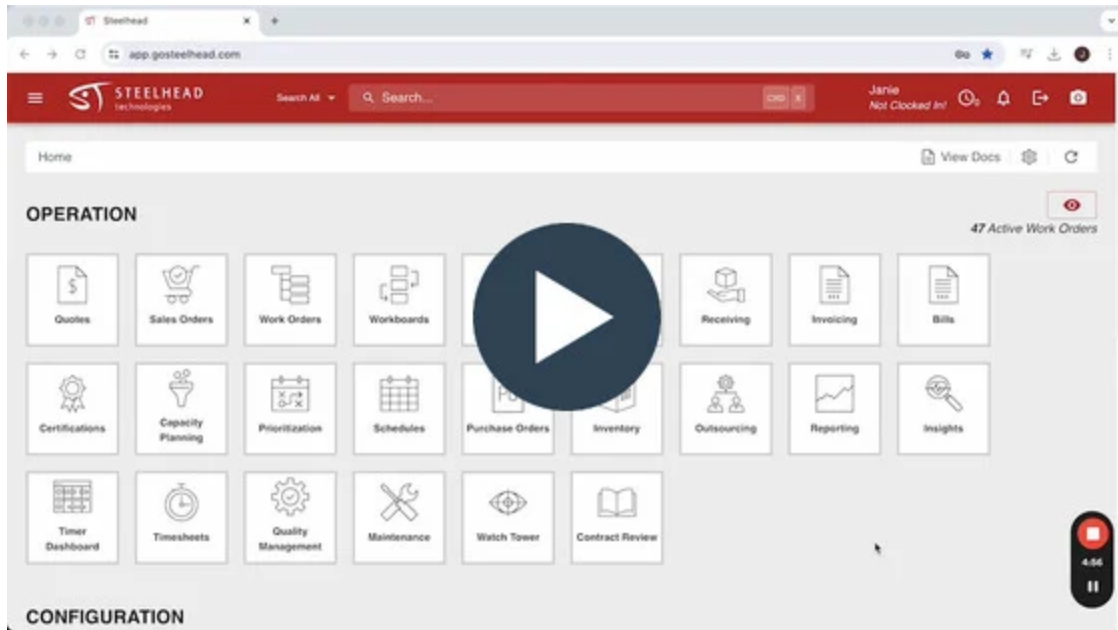
Export your quality management data easily with new CSV export

Steelhead has introduced a new tool that allows you to export your quality management data. No more wondering what parts are always on hold; export your data to save, analyze, create graphs and charts, and understand your quality management concerns! You can export different types of Quality Management data such as:

- All Quality Holds
- All NCRs
- All RMAs
- All CARs

There are numerous file types you can utilize to download your data such Excel spreadsheets, Apple Numbers, etc. Become familiar with the ins-and-outs of your business's quality management with this practical exportation tool!

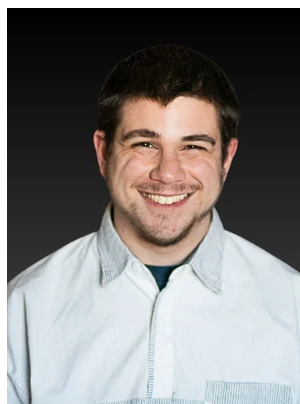
If you have an questions or problems with this feature, please contact support@gosteelhead.com to let us know!



[VIEW ALL PRODUCT UPDATES](#)

INTRODUCTIONS

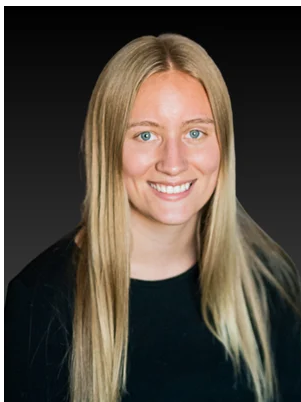
Welcoming our newest team members!



JACOB SMITH
Software Engineer



CARL TOROLA
Software Engineer



ELLE TAIVALKOSKI
Customer Support Specialist

PROUD PARTNER OF



Steelhead Technologies, 100 5th Street, Suite 2, Calumet, MI 49913, United States

[Unsubscribe](#) [Manage preferences](#)