

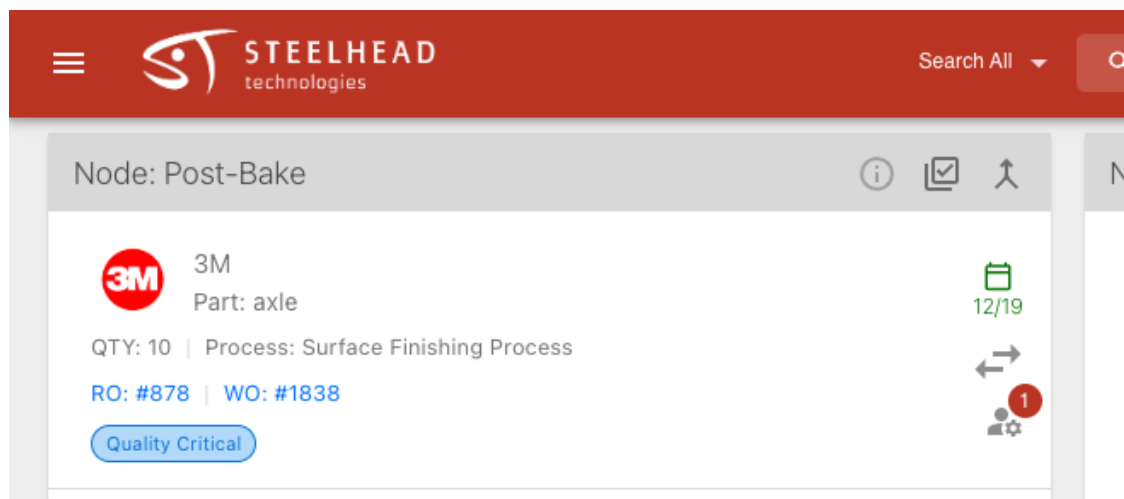
BI-WEEKLY NEWSLETTER

December 16th, 2022



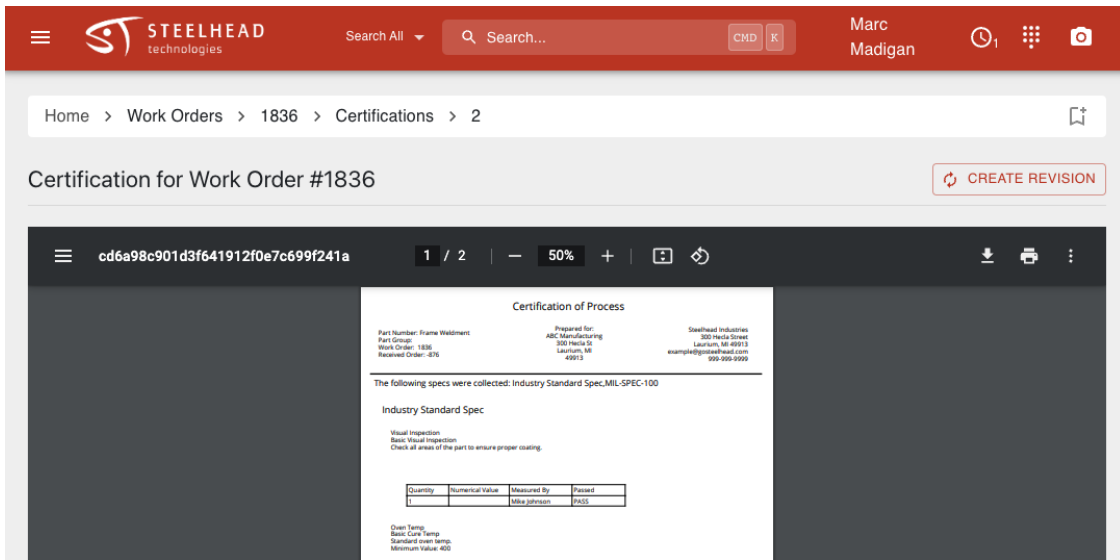
Specs and Certs are Live!

You asked and we answered: Steelhead now supports specifications and certifications! Entering spec measurements in Steelhead is easy to set up and even easier to enter, giving you the ability to meet customer demands with minimal additional effort for station operators or quality managers.



When a part number has an assigned specification, a badge appears on workboards when those parts are at a station where spec data must be entered in. Spec inputs can be optional or required to move parts. Never forget to enter spec data again!

Customizable certifications can be generated with just a few clicks, using data gathered by operators during production. Generating certs has never been easier.



Steelhead's document customization capabilities allow you to instantly create branded certifications, with data pulled directly from operator measurements during production.

Learn more about these powerful new features in our specs and certs user documents:

- [Specs](#)
- [Certs](#)
- [Setting Specs](#)
- [Gathering Spec Data](#)
- [Creating and Finalizing Certs](#)

Updates - December, 2022

In the last month, our software engineers have been working hard to provide updates to make Steelhead even better for you. Beginning in mid-November, we began tracking new changes in our user documentation to provide our users a record of changes made to the platform. The [Product Updates page](#) will be updated frequently with new features and includes a complete list of updates. Here are some of the highlights from the last month:

12/14/2022

- Part Number images - In the part number profile, select "is display image" to allow the picture to appear on travelers, workboard side

screens, and work orders

12/9/2022

- Specifications and Certifications - set custom specifications per customer requirements and collect measurements needed to generate certifications
- Part Locations - assign a location to part numbers when creating a Work Order so that they can be easily found

12/7/2022

- Number of Active Work Orders appears on the top right of the home page

12/6/2022

- Received Order parts table now includes a (+/-) icon to adjust part quantities; can also be used to transfer parts from one Work Order to another
- Document numbers can be started at custom values
- Inventory location QR codes available to print when receiving an inventory order
- Additional features and improvements to the Customer Success page

12/5/2022

- Work Order global priority shows on workboards, if enabled in Domain settings

12/2/2022

- Bulk Data Uploading - allows for the initial bulk uploading of existing customer, vendor, part number, and inventory information
- Invoice status changes from blue to green, with an open envelope icon, when invoices have been viewed by a customer

12/1/2022

- Additional units for Part Count - allows for counting parts by mass or quantity

11/18/2022

- Outsourcing - includes the ability to nest and track process nodes within a tree for outsourced work
- Sage 50 2023 Connector available

11/17/2022

- Opt-in / Opt Out fix: child nodes not available to select if parent node is not selected

11/16/2022

- Process Nodes now include option to identify a Default Station

11/15/2022

- "Copy Row" Button on Received Order Add Parts Table
- "Edit All Treatments" Button on Received Order Page

[View All Product Updates Here](#)



Steelhead Technologies, 300 Hecla Street, Laurium, MI 49913, United States

[Manage preferences](#)