



Lasernet 10.2.

Release Overview

Agenda.

Expected running time for this session is estimated to take 1 – 1 ½ hours

The session will be recorded

Questions you might have during this session can be added to the Teams chat

1. System requirements for Lasernet 10.2
2. Important before upgrading to this version
3. Lasename Server installation
4. Lasename Developer installation
5. Sign in to Lasename Server with Azure AD authentication
6. Synchronize and download your Lasename desktop apps
7. New features in Lasename Config Server
8. Lasename Documentation Guides
9. Live demo for installation process
10. News in Lasename Form Editor and live demo
11. News in Lasename Developer, Outlook and SharePoint modules
12. News in Lasename Input Management and live demo
13. Lasename 10.2 release dates



System requirements for Lasernet 10.2.

General



- Lasernet 10 requires at least 1GB of available disk space. This is for the installation only. Additional disk space will be required; the amount will vary depending on your configuration.
- You can only install Lascript 10 on 64-bit systems.
- A minimum of two cores are required.
- A trusted certificate installed on the Lascript Config Server 10 is recommended. New article available on the Formpipe Support Portal

<https://support.formpipe.com/kb/articles/946>



System requirements for Lasernet 10.2.

Supported Operating Systems

- Windows 8.1
- Windows 10
- Windows 11 
- Windows Server 2012 R2
- Windows Server 2016
- Windows Server 2019
- Windows Server 2022 


Supported Browsers

- Microsoft Edge
- Google Chrome
- Mozilla Firefox

System requirements for Lasernet 10.2.

Lasernet x64 Prerequisites


- Microsoft .NET Framework 4.8

 Please manually download and install Microsoft .NET 4.8 framework, when notified by installer, before installing Lasernet 10.



- Microsoft SQL Server 2017 LocalDB
- Microsoft OLE DB Driver 18 for SQL Server
- Microsoft Visual C++ 2019 Redistributable x64

 These components are automatically added by the installer.

- Microsoft Edge WebView2 Runtime

 During the installation, this component is automatically added / downloaded by the installer. If there is no internet connection, please manually download and install the component, before installing Lasernet 10.

Important before upgrading to Lasernet 10.2.

- New installers, Connection Settings and Sign In procedures
 - We recommend that you manually uninstall older versions of Lاسernet 10 before you install Lاسernet 10.2.
 - Separate installers for Lاسernet Server 10 and Lاسernet Developer 10. 
 - Lاسernet Launcher, Lاسernet Guides and various Lاسernet client apps are no longer installed by the Lاسernet Server/Developer installer(s) and therefore cannot be installed remotely via Lاسernet Services. 

Important before upgrading to Lasernet 10.2.

- New installers, Connection Settings and Sign In procedures
 - The sign in and connection options for Lasernet Client, Lasetnet OCR, Lasetnet Meta and Lasetnet Dictionary Server have changed but simplified. **NEW**
 - Formpipe Software must receive a copy of any 3rd party module, developed with the Lasetnet SDK, before an upgrade to Lasetnet 10.2, for compliancy with a new installation process.

This service is only provided for Lasetnet 10 solutions installed on-premise. Formpipe Software does not support 3rd party modules for Lasetnet hosted in cloud by Formpipe Software. **NEW**

Lasernet Server (Part 1).

Run Lasernet Server 10.x.msi

- Lasernet Config Server (Web app)
- Lasernet Monitor (Web app)
- Lasernet Launcher (Web app)
- Lasernet Monitor (Windows app)
- Lasernet Server License Manager (Windows app)
 - Add Lasernet 10 (Prod:3279 - Windows Service)
 - Add Lasernet Server License Key
 - Add Lasernet Dictionary 10 (Dictionary:33443 - Windows Service with new port number for Input Management only)

NEW

Lasernet Developer 10.2 is a standalone installer
We recommend it is installed on the local desktop

Run Lasernet Web Client 10.x.msi

- Lasernet Web Client 10 (Web app)

- Web app menu to navigate to Lasernet Web apps
- Pagination tool to select rows of jobs for specific page

Lasernet Developer.

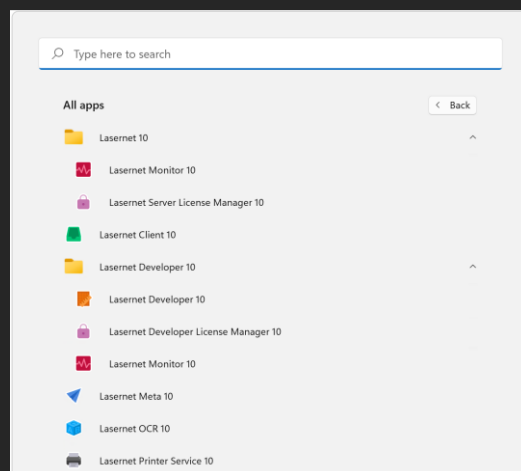
Run Lasernet Developer.msi

- Lasernet Developer
- Lاسernet Monitor
- Lasernet Developer License Manager
 - Add Lasernet Developer License Key



Lasernet Launcher app is not available in 10.2

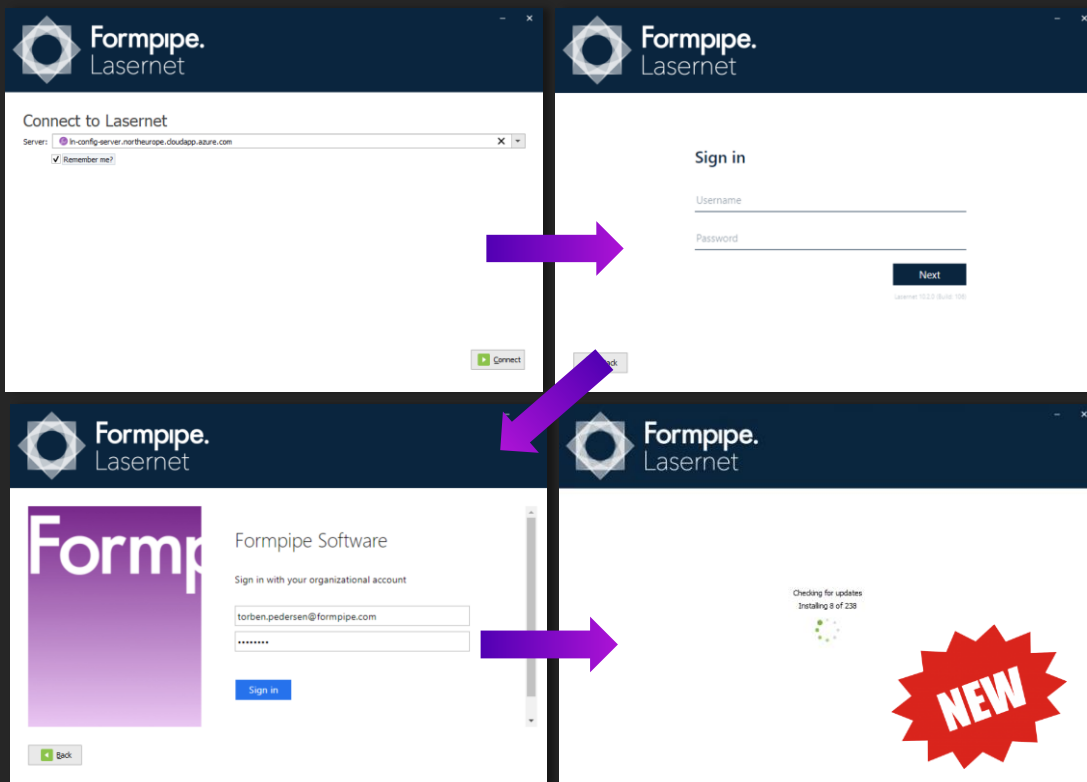
Start applications via Windows Start Menu



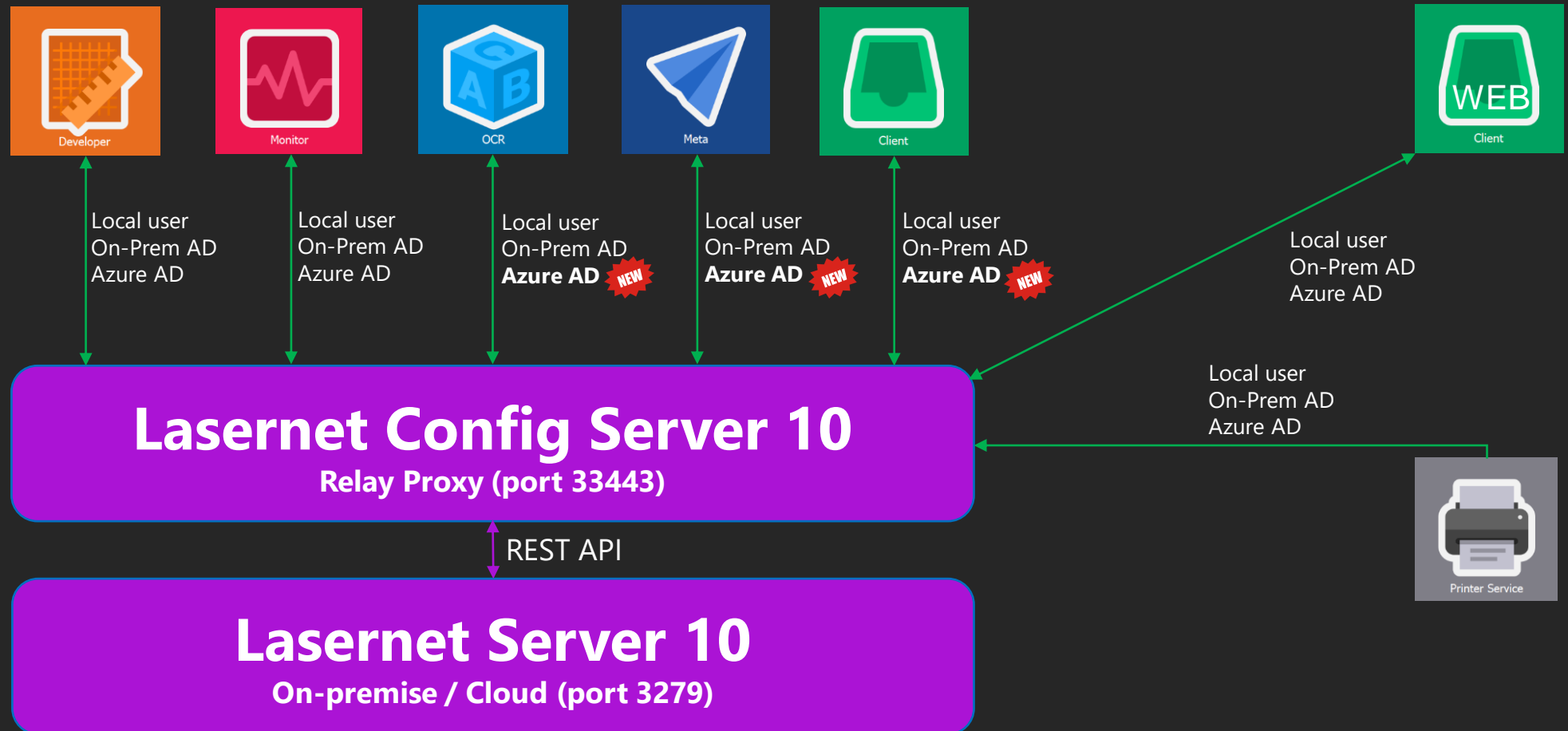
Connect to Lasernet Server.

Sign in and download your Lasernet Developer and desktop apps

- This will synchronize the locally-installed version of apps with Lasetnet Server
- Install up to 5 different versions of Lasetnet apps on your local computer



Azure AD authentication added to Lasernet Client, OCR and Meta apps.



Azure AD Authentication and enhanced Security for Lasernet Config Server added to Server Settings.

C:\ProgramData\Formpipe Software\Lasernet 10\Config\Default\ServerSettings.json



```
{
  "Service": {
    "Servers": {
      "Default": {
        "Server": "ln-config-server",
        "Port": 3279,
        "ClientSecret": "9CAZTx9+svqBq9YvMOWzX/9QBRu999zLAJth8h9US99=",
        "Insights": {
          "Performance": false,
          "Transactions": false
        }
      },
      "Port": 33443,
      "Bindings": [
        {
          "Hostname": "192.168.87.130"
        },
        {
          "Hostname": "localhost"
        },
        {
          "Hostname": "DESKTOP-G70LUJV"
        },
        {
          "Hostname": "DESKTOP-G70LUJV.northeurope.cloudapp.azure.com"
        }
      ]
    },
    "Authentication": {
      "Type": "External",
      "Providers": {
        "Default": {
          "Name": "Formpipe Software AB tenant",
          "OIDCMetadataEndpoint": "https://login.microsoftonline.com/99999be9c-9c89-99bb-a9de-c999db999a99/v2.0/.well-known/openid-configuration",
          "ClientId": "999ee99f-9fc9-9a99-ad90-99999fd999e9"
        }
      }
    }
  }
}
```

← Add **Servers** parameters to Server Settings

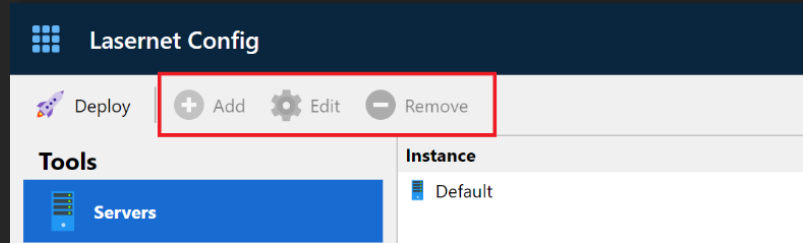
It is recommended to maintain the server settings on Windows file level, instead of the Config Server, to reach the highest security level and to avoid a server-side request forgery (SSRF)

← Set **Authentication Type**

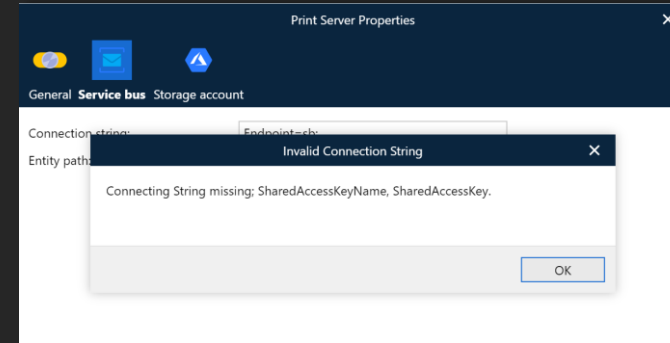
Set **Local** for Liferay users or **External** for Azure AD users

New Features in Lasernet Config Server.

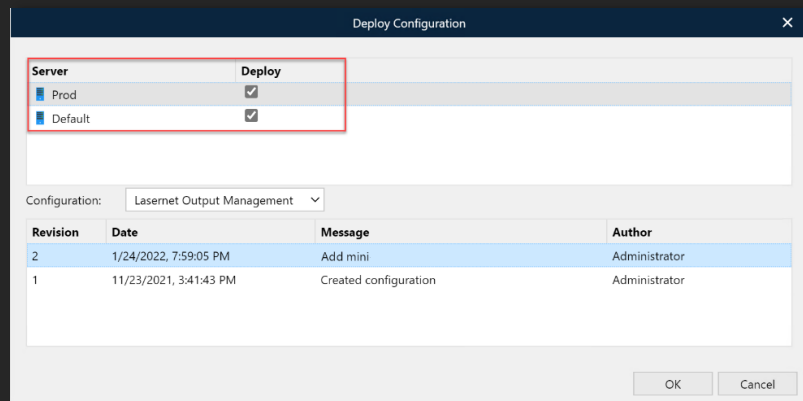
Server settings, maintained on file level, will de-activate adding servers from web site



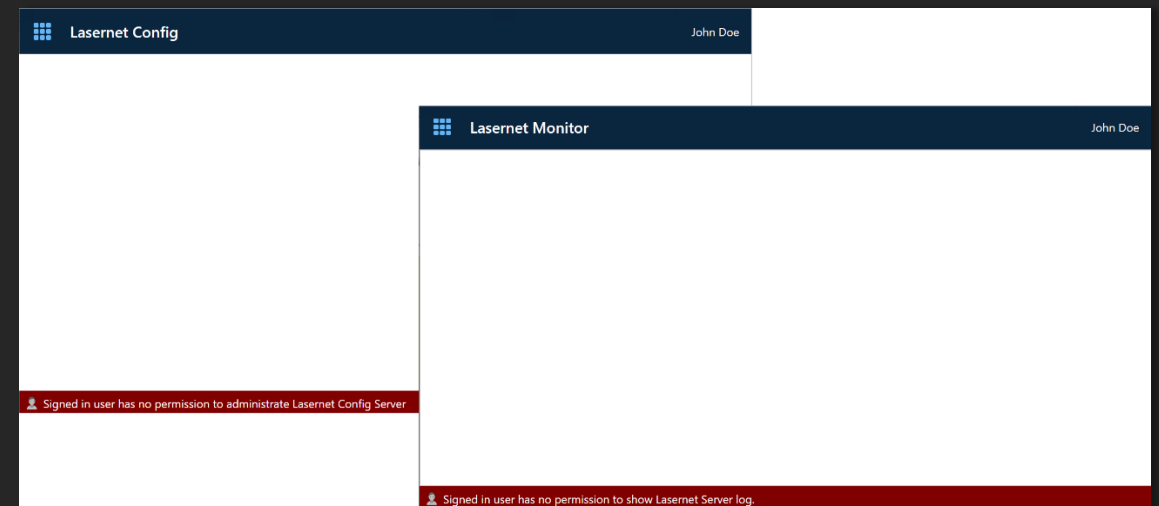
Added syntax check to Azure Service Bus and Storage Account connection strings



Deployment to Multiple Servers Simultaneously



Signed in user, with no permissions, is informed with a status message in Config Server and Monitor

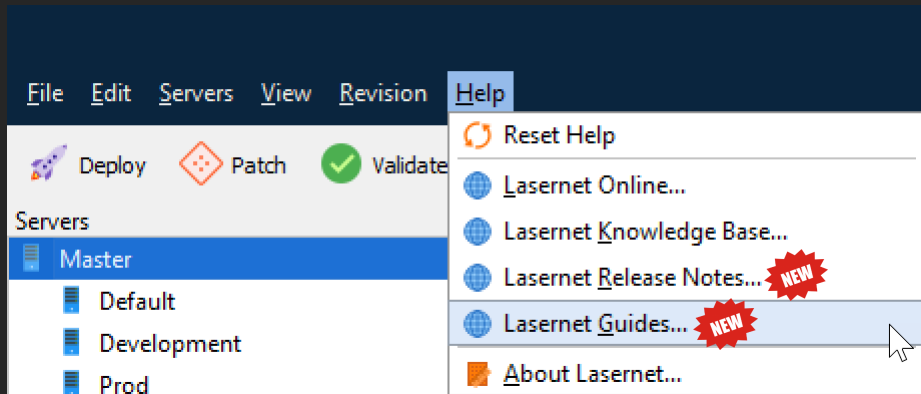


Download or view Lasernet Guides.

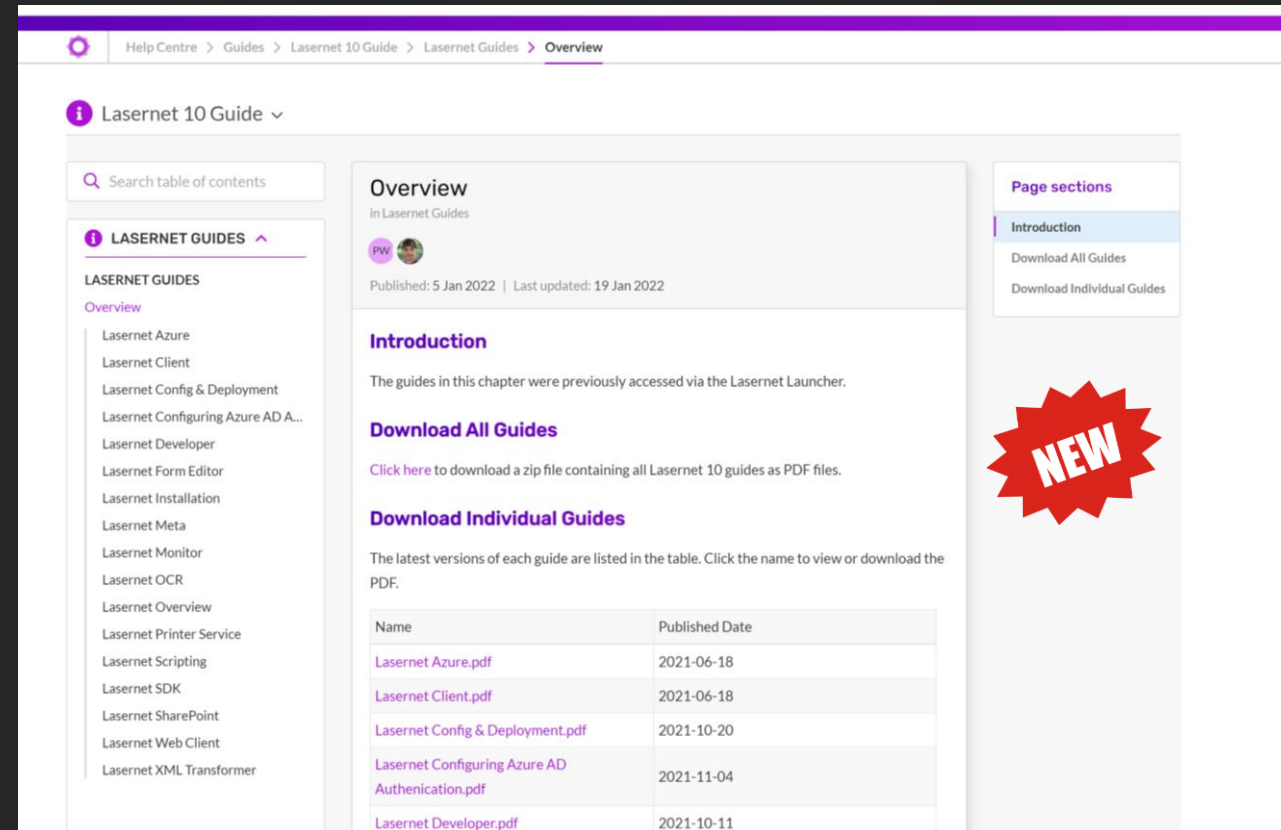
The Lasernet manuals that were previously available in the Lasetnet Launcher are no longer included with the installation packages.

These are now available online in the Formpipe Support Portal Guides section, where you can view and download the PDFs
<https://support.formpipe.com/guides/topic/806>

For more information about how to configure Lasetnet, as an app registration, go to **Help → Lasetnet Guides**

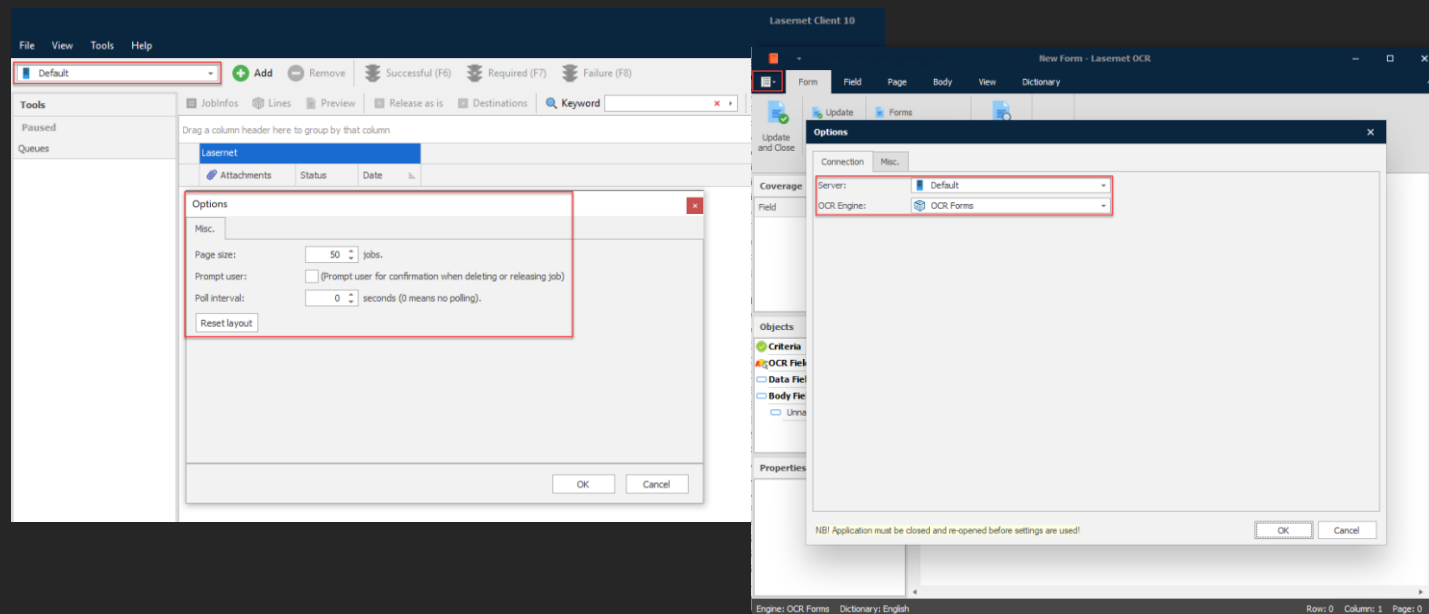


Release Notes are also accessible from Help

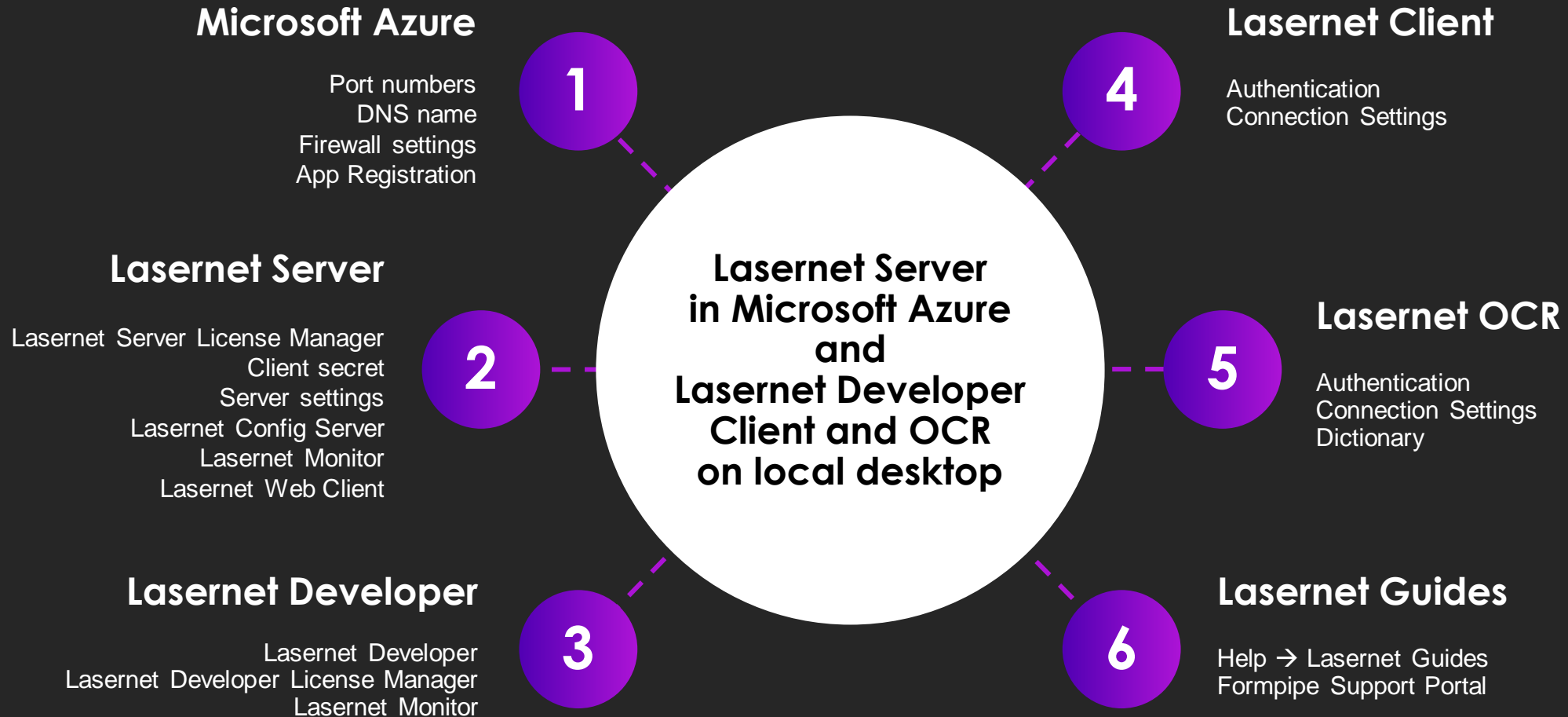


Simplified connection settings in Client, OCR and Meta apps

- Connection settings are centralized on Config Server for all apps
- Select the Lasernet Service Instance in the app only
- Improves the security and simplifies the configuration process for Lasetnet apps installed on the local desktops



Installation process.



Installation process.



Microsoft Azure

Search resources, services, and docs (G+)

Torben.Pedersen@form...
FORMPIPE SOFTWARE AB (FORM...

Home >

LN-WIN2019-TEST
Virtual machine

Search (Ctrl+/)

Connect Start Restart Stop Capture Delete Refresh Open in mobile CLI / F

Advisor (1 of 2): Enable Backups on your Virtual Machines →

Essentials

Resource group (move)
LN-WIN2019-TEST group

Status
Running

Location
North Europe

Subscription (move)
Formpipe PRIVATE Dev/Test

Subscription ID

Tags (edit)

Owner : Torben Pedersen AdminAccount : fpadmin More (2)

Operating system
Windows (Windows Server 2019 Datacenter)

Size
Standard D2s v3 (2 vcpus, 8 GiB memory)

Public IP address

Virtual network/subnet

DNS name
ln-win2019-test.northeurope.cloudapp.azure.com

Properties Monitoring Capabilities (8) Recommendations (2) Tutorials

Virtual machine

Computer name
LN-WIN2019-TEST

Health state
-

Operating system
Windows (Windows Server 2019 Datacenter)

Publisher
MicrosoftWindowsServer

Offer
WindowsServer

Plan
2019-Datacenter

VM generation
V1

Agent status
Ready

Agent version
2.7.41491.1044

Host group
None

Networking

Public IP address

Public IP address (IPv6) -

Private IP address

Private IP address (IPv6) -

Virtual network/subnet

DNS name

Size

Size

vCPUs
2

Microsoft Azure

Search resources, services, and docs (G+)

Home > Formpipe Software AB > Lasernet AzureAD Test

Lasernet AzureAD Test | Authentication

Search (Ctrl+/)

Save Discard Got feedback?

Overview Quickstart Integration assistant Manage Branding & properties Authentication Certificates & secrets Token configuration API permissions Expose an API App roles Owners Roles and administrators Manifest Support + Troubleshooting Troubleshooting New support request

Some actions may be disabled due to your permissions. To request access, contact the application owner(s) or your administrator. View application owners or administrators.

Platform configurations

Depending on the platform or device this application is targeting, additional configuration may be required such as redirect URIs, specific authentication settings, or fields specific to the platform.

+ Add a platform

Single-page application Quickstart Docs

Redirect URIs

The URIs we will accept as destinations when returning authentication responses (tokens) after successfully authenticating or signing out users. The redirect URI you send in the request to the login server should match one listed here. Also referred to as reply URLs. Learn more about Redirect URIs and their restrictions.

https://ln-win2019-test.northeurope.cloudapp.azure.com:33443/lasernet/auth
https://ln-win2019-test.northeurope.cloudapp.azure.com:33443/lasernet/client

Grant types

✓ Your Redirect URI is eligible for the Authorization Code Flow with PKCE.

Inbound port rules						
Network security group LN-WIN2019-TEST-nsg (attached to network interface: ln-win2019-test290) Impacts 0 subnets, 1 network interfaces						
Priority	Name	Port	Protocol	Source	Destination	
300	RDP	3389	TCP	Any	Any	
310	Port_33443	33443	TCP	Any	Any	
65000	AllowVnetInBound	Any	Any	VirtualNetwork	VirtualNetwork	
65001	AllowAzureLoadBalancerInBou...	Any	Any	AzureLoadBalancer	Any	
65500	DenyAllInBound	Any	Any	Any	Any	

Port_33443 Properties

General Programs and Services Remote Computers
Protocols and Ports Scope Advanced Local Principals Remote Users

Protocols and ports

Protocol type: TCP

Protocol number: 6

Local port: Specific Ports
33443
Example: 80, 443, 5000-5010

Remote port: All Ports
Example: 80, 443, 5000-5010

Internet Control Message Protocol (ICMP) settings: Customize...

OK Cancel Apply



Demo for Installation Process 10.2.



News in Lasernet Form Editor10.2.

Lasernet Form Editor.

- Rearrange → Position → Font Point Size
 - A new setting to overwrite a fixed font size defined in the Fonts tab. This feature enables you to Rearrange a text, with the highest possible font size that can fit into a text box. Font Point Size is supported for Rearranges and Conditional Rearranges where Size Type is set to Auto Y or Manual.
- Rearrange → Position → Font Width Scale
 - A new setting to calculate the scaling width of text. Similar to Font Point Size, the setting will prioritize the scale to insert the most text possible in Rearranges with Position → Size Type set to Auto Y or Manual.

Edit Rearrange

General Objects Criteria Fonts Formats **Position** Border

Absolute

☒ First ☒ Middle ☒ Last ☒ Single

Position

Size type: **Auto Y**

X: 7,0 mm Y: 32,0 mm

Width: 50,0 mm Height: 5,7 mm

Rotation: 0 °

Box horizontal alignment

☒ Left ☐ Center ☐ Right

Box vertical alignment

☒ Top ☐ Middle ☐ Bottom

Font Point Size

Minimum: 8 Maximum: 14

Font Width Scale

Minimum: 70 Maximum: 130

Relative

Relative to: **Top of page**

Text horizontal alignment

☒ Left ☐ Center ☐ Right ☐ Justified

Text vertical alignment

☒ Top ☐ Middle ☐ Bottom

Formpipe Lasernet

Ship to: Sparrow Wholesales
123 Purple Road
Arvada, CO 80005
United States of America

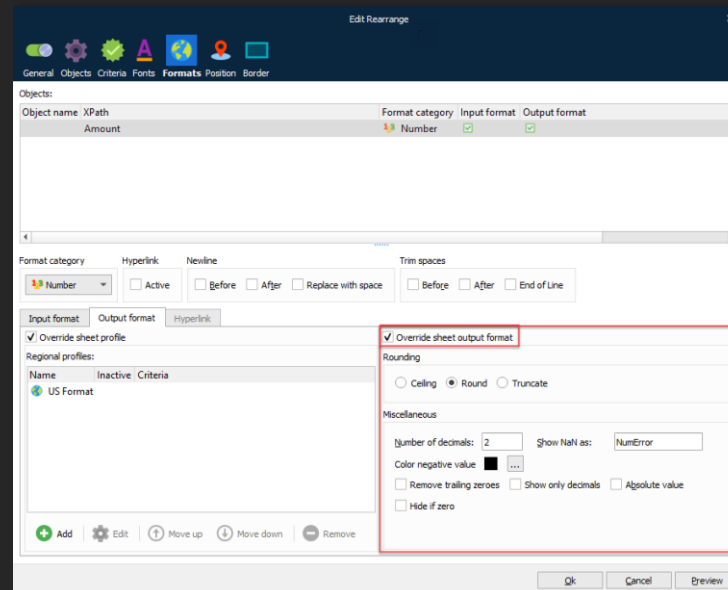
1 of 1

PS-100183

Mode of delivery: Truck Ship date: 19-01-2022

Lasernet Form Editor.

- Override sheet output format
 - A new Override sheet output format check box, added to Rearrange → Formats tab, will give you full control over whether number or date formats should be overwritten with enhanced output format settings
 - If not activated, the settings will be retrieved from the values added to Sheet Options → Regional Profiles or from the class sheet.regionalProfile if the JavaScript has been added to the sheet





Demo for Lasernet Form Editor 10.2.




News in Lasernet Developer 10.2.

Outlook Mail (output).

- New features

- Deleting emails in the Sent Items folder, via property in Outlook Mail module, is only supported for emails with attachments smaller than 4 mb
- Deleting emails with attachments larger than 4 mb must be handled manually by adding Exchange Server policy rules as recommended by Microsoft support
- Added support for “Create draft without sending it” and a JobInfo “MailDraft” to overwrite this property



Outlook Mail Properties

General **Setup** Scheduling Combining Pause Delivery Destinations Pre JobInfos Post JobInfos Connections Enter Modifiers Exit Modifiers Data Written Job Events Job Tracking Security

User

Display name:

E-mail:

Properties

Do not insert job data in an attachment: ☐

Request Read Receipt: ☐

Save copy in Sent Item folder: ☐

Validate e-mail address syntax: ☒

Importance: ☐ Low ☒ Normal ☐ High

Create draft without sending it: ☐ (Mail must be manually sent from mailbox) **NEW**

SharePoint

- New features

- Support for on-premise server for Legacy REST API
- Password substitution support for SharePoint module running in legacy mode
- Added authentication as application for SharePoint Graph communication
 - Lasernet SharePoint must be registered as an app by an Azure AD admin
 - Azure AD admin must provide a ClientID and Client Secret for the module to sign in
 - Connection will never expire compared to a user sign in

Connection Graph - App Reg Properties

General

REST API: ☐ Legacy ☒ Graph

Authentication: ☐ User ☒ Application **NEW**

Name: Connection Graph - App Reg

Description: Optional

Server Type: SharePoint 365

Tenant Domain: formpipe.com

Client ID: [Redacted]

Client Secret: [Redacted]

Site: formpipe.sharepoint.com

Subsite: LaserNetTest

Document library: Shared Documents

Test Connection

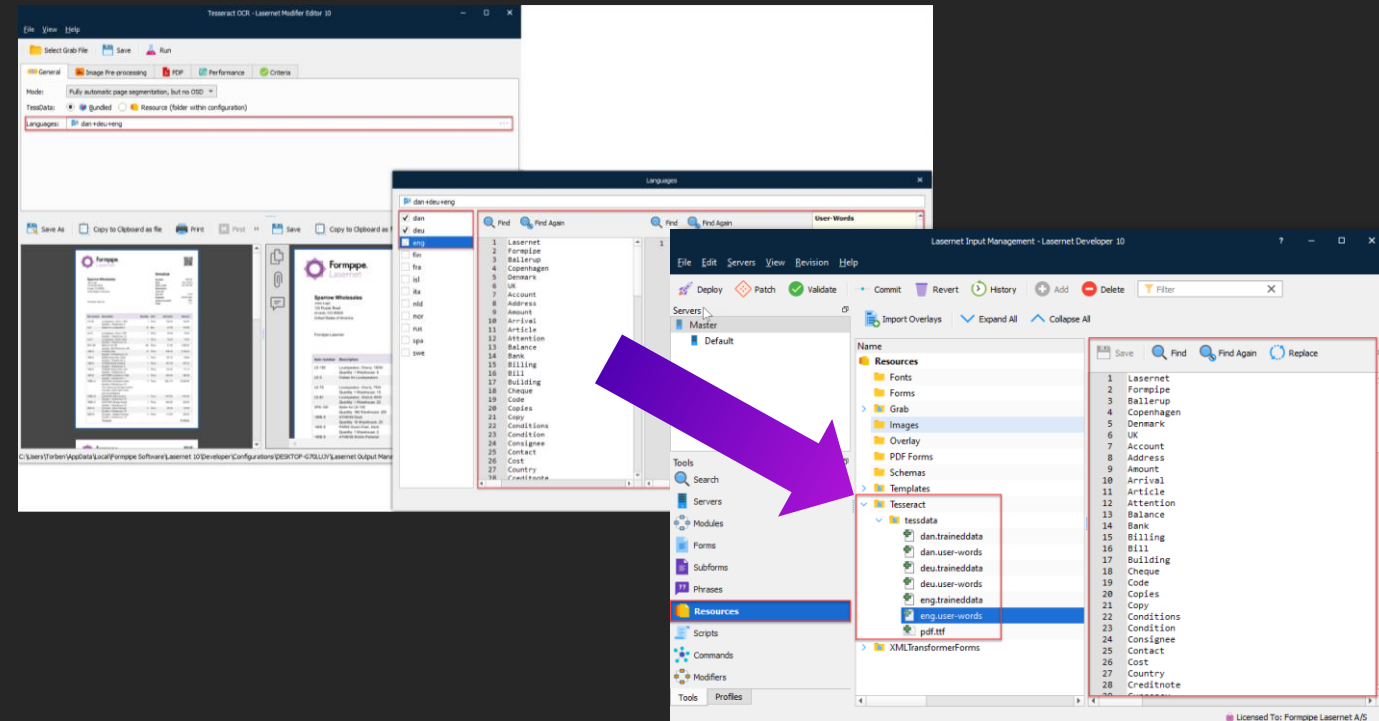
Ok Cancel



News in Lasernet Input Management 10.2.

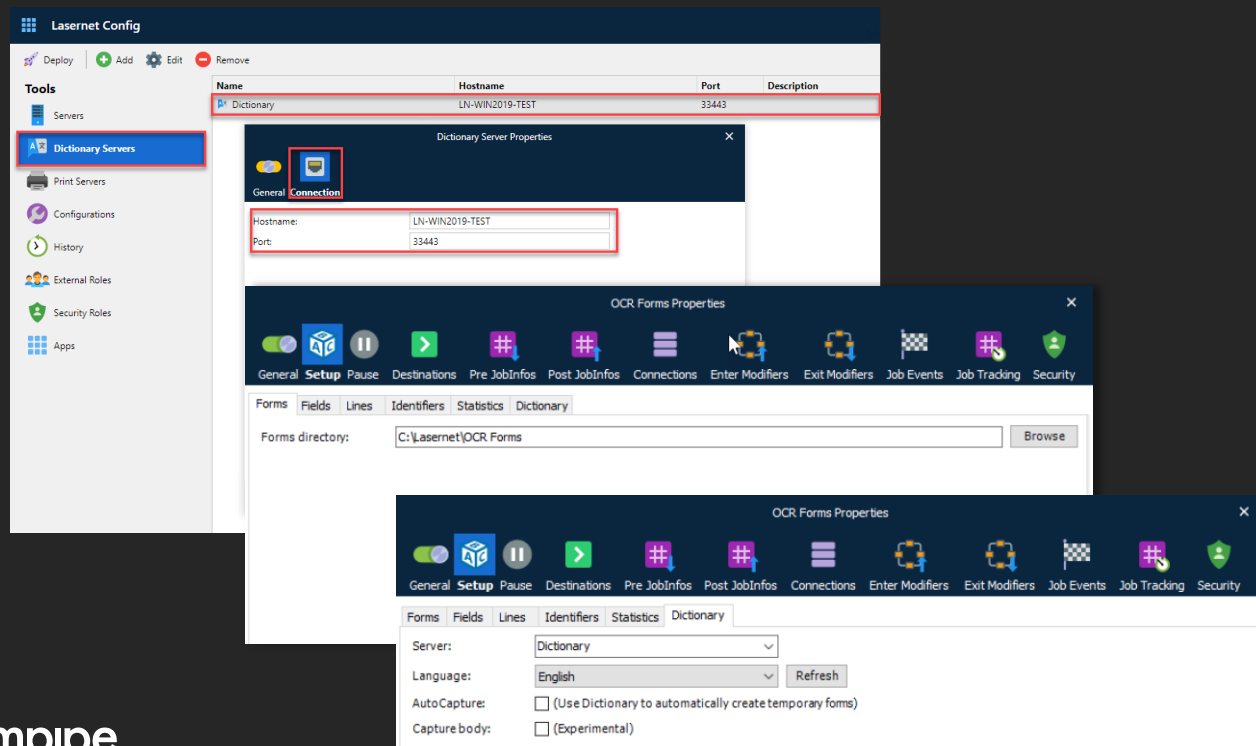
Tesseract OCR

- New features
 - Language packages in Tesseract OCR, bundled with the Lasernetet Server 10, are automatically copied to the Resources and stored as a part of the configuration
 - A new Tesseract Language Editor allows further editing of user-words and user-patterns to customize the quality of the OCR processing in the Tesseract module



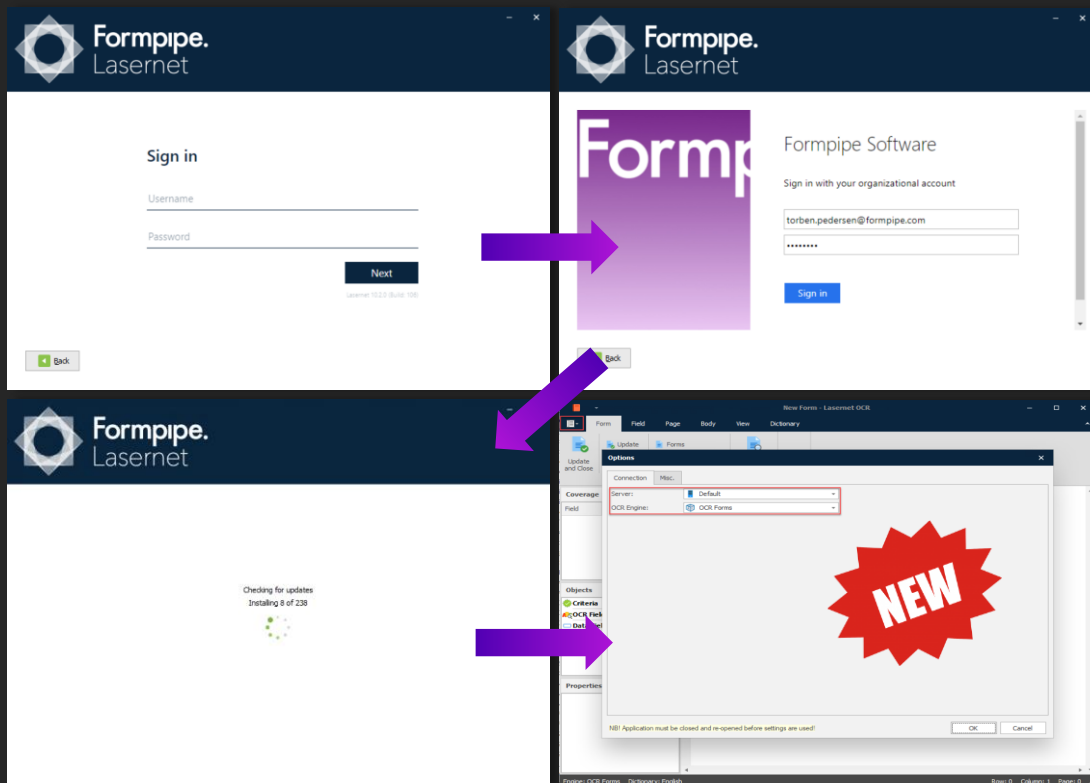
Lasernet Input Management.

- Lasernet OCR Engine and Dictionary Service
- Connection settings for OCR Engine and Dictionary Server are centralized, maintained on and retrieved from the Lasernet Config Server 10



Lasernet Input Management.

- Lasernet OCR Editor
 - Added support for sign in via Azure AD Authentication enabling multi-factor authentication supporting automatic version synchronization
 - Simplified process to configure connections between apps and server



Lasernet Input Management.

- Lasernet OCR Editor
 - Added several improvements to the Auto Capture feature, introduced in Lasernet 10.0, to automatically capture data of incoming documents based on OCR Fields stored in the Lascript Dictionary

Read the release notes for detailed information about new features





Demo for Lasernet Input Management.



Lasernet 10.2 releases.

- Lasernet 10.2 Beta 1 is out NOW with installation guide and release notes. Download available from the KB-site: <https://kb.lasernet.formpipe.com/article/AA-00851/66/>
- Lasernet 10.2 Final release is planned for March 18th (pending market feedback)



Thank you.

Torben Pedersen

Product Owner Lasernet Core

torben.pedersen@formpipe.com

Formpipe Software A/S