



Procure Touch



Product Overview

Introducing the new Touch – a premium check-in solution. This new 11.6” device offers a full color touch screen, biometric ID pad, a card reader and supports Windows 11.

Key Features and Benefits

- Supports Windows 11
- Full HD Widescreen Display 11.6”
- Multi-touch Screen
- Biometric ID Pad
- Card Reader
- Adaptive dual hinge folding base for wall/counter mounting



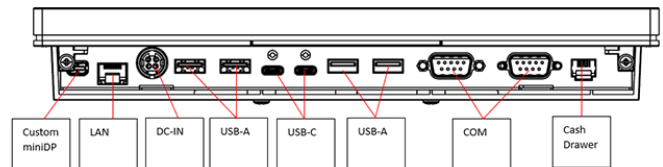


Procure Touch

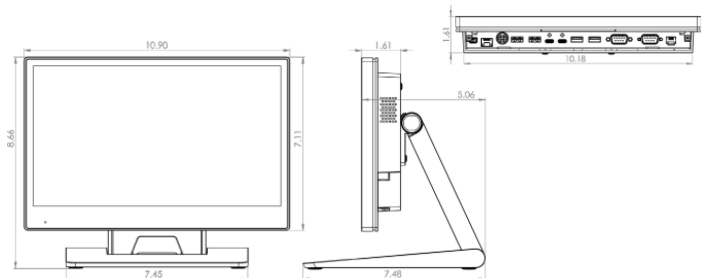
PRODUCT SPECIFICATIONS	
Processor	Intel® Celeron Elkhart Lake CPU J6412
Memory	1x DDR4 up to 32GB
Storage	1x NVMe M.2 SSD
Graphic Engine	Intel® UHD Graphics for 10th Gen Intel® Processors
Supported OS	Windows 11 GAC, Windows 11 Pro, Windows 10 IOT, Linux, Android 13
I/O Ports	2x USB 3.0, 2x USB 2.0 2x USB-C (data only) 1x custom miniDP convertible to HDMI or VGA 2x Serial DB9 with power option 1x RJ45 Gigabit LAN 1x RJ-11 Cash Drawer Port 1x 4-PIN Power Connector with Latch
Audio	1x Speaker
Display	Widescreen 11.6" 1920x1080 True-Flat PCAP Multi-touch
Power	65W/19V
Certificate	FCC Class A, CE Mark Class A, LVD
Environmental	Operating: 0°C ~ 35°C (32°F ~ 95°F) Storage: -20°C ~ 60°C (-4°F ~ 140°F) Humidity: 20% ~ 85% RH non-condensing
Dimensions	10.9" (W) x 8.66" (H) x 7.48" (D) with Base
Weight	3.1 lbs without Base, 5.5 lbs with Base
VESA	75 x 75mm
Peripherals	3-Track MSR Fingerprint Reader RFID PINpad Brackets, 2D Honeywell Barcode Scanner WIFI Camera

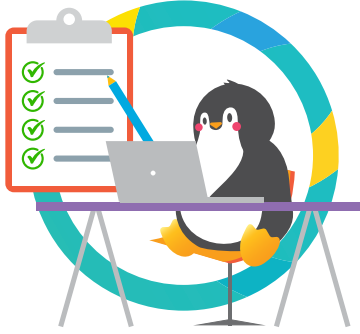
DEFAULT CONFIGURATIONS	
Product Code	Description
HZ11880NN-NNNMN2N	Horizon, 8G Ram, 128G SSD, Win 10 IOT, Without Base
HZ11880NN-NNNGN2N	Horizon, 8G Ram, 128G SSD, Win 11 GAC, Without Base
HZ11880NN-NNN1N2N	Horizon, 8G Ram, 128G SSD, Win 11 Pro, Without Base
HZ11880NN-NNNMN2H	Horizon, 8G Ram, 128G SSD, Win 10 IOT, With Base
HZ11880NN-NNNGN2H	Horizon, 8G Ram, 128G SSD, Win 11 GAC, With Base
HZ11880NN-NNN1N2H	Horizon, 8G Ram, 128G SSD, Win 11 Pro, With Base

I/O Interfaces



Unit Dimensions





Procare Touch

Touch computers - special information!

USB Mouse and Keyboard (not supplied)

You must supply your own USB mouse and keyboard for installation and setup.

Windows includes an on-screen keyboard that may be used in lieu of a physical keyboard.

Installation - No CD Drive

When you install Procure, you'll notice the touch computers don't have a CD drive. You'll need to do one of the following:

- Share a CD drive from another computer on your network, or...
- Copy the contents of the Procure CD to a USB drive, or...
- Connect an external USB CD drive (not supplied) to the touch computer.

Third Party Vendor

Touch computers are shipped from a third-party vendor. Any warranty-related issues must be handled through the vendor.

Warranty

The Procure Touch has a 3-year warranty. For warranty related questions please contact Procure Support.



Support

For additional information or support contact us:

Procure Support

Hours: M-F, 6 a.m. - 9 p.m. ET

Phone: (800) 964-1729

Email: support@procaresoftware.com

For additional information on our hardware, please visit:

www.procaresoftware.com/capabilities/procare-hardware