

# VALUATION – JAN/FEB 2022 RELEASE NOTES

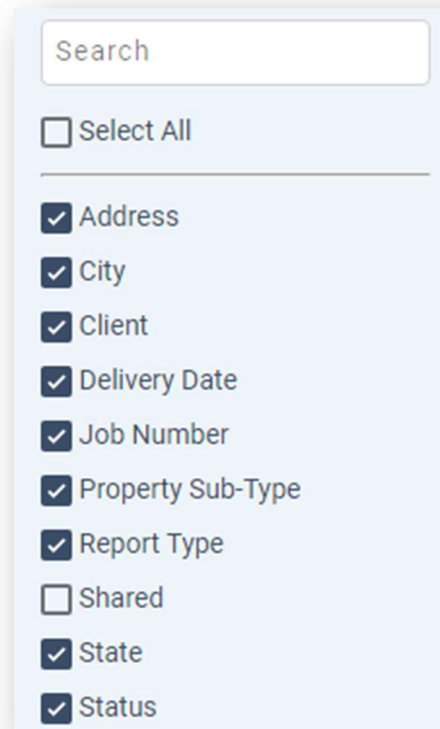
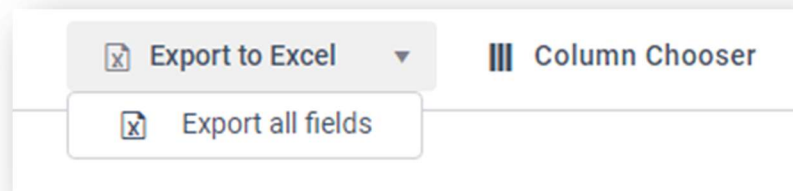
The following enhancements have been included in the release.

## NEW FEATURES AND ENHANCEMENTS

### Jobs

#### Column Chooser and Export to Excel

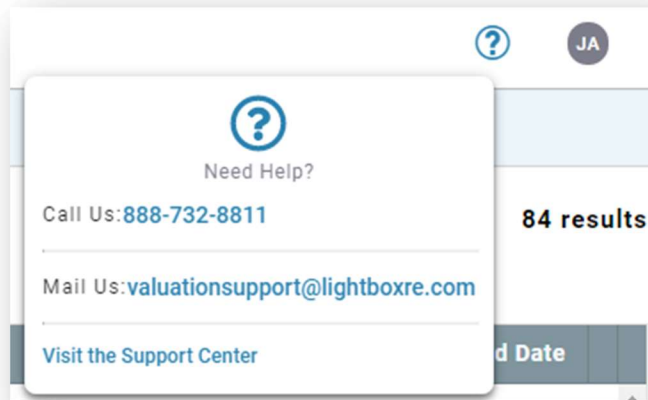
Customize the columns shown on the RFP and Jobs Dashboard. Export just those columns or all columns for a Work in Progress report.



## Research      New Support Menu

---

We've updated the Research Support Menu – access all of the Valuation support tools from a single menu.



## Research      Site Definition Enhancements

---

The Site Definition tool has the following enhancements:

- Measure tool added to the Map Toolbar – assists when parcel boundaries need to be adjusted.
- Address Tooltips available when new layer: Addresses | Buildings is turned on
- Layers - Job Site has been changed to: Job Site Boundary | Job Location has been changed to: Job Site Pin for clarity

## Research      New Sale Fields

---

We've added new "Adjustment Comments" and "Sale Comments" fields in the Sales section.

## Research      Improvement Enhancements

---

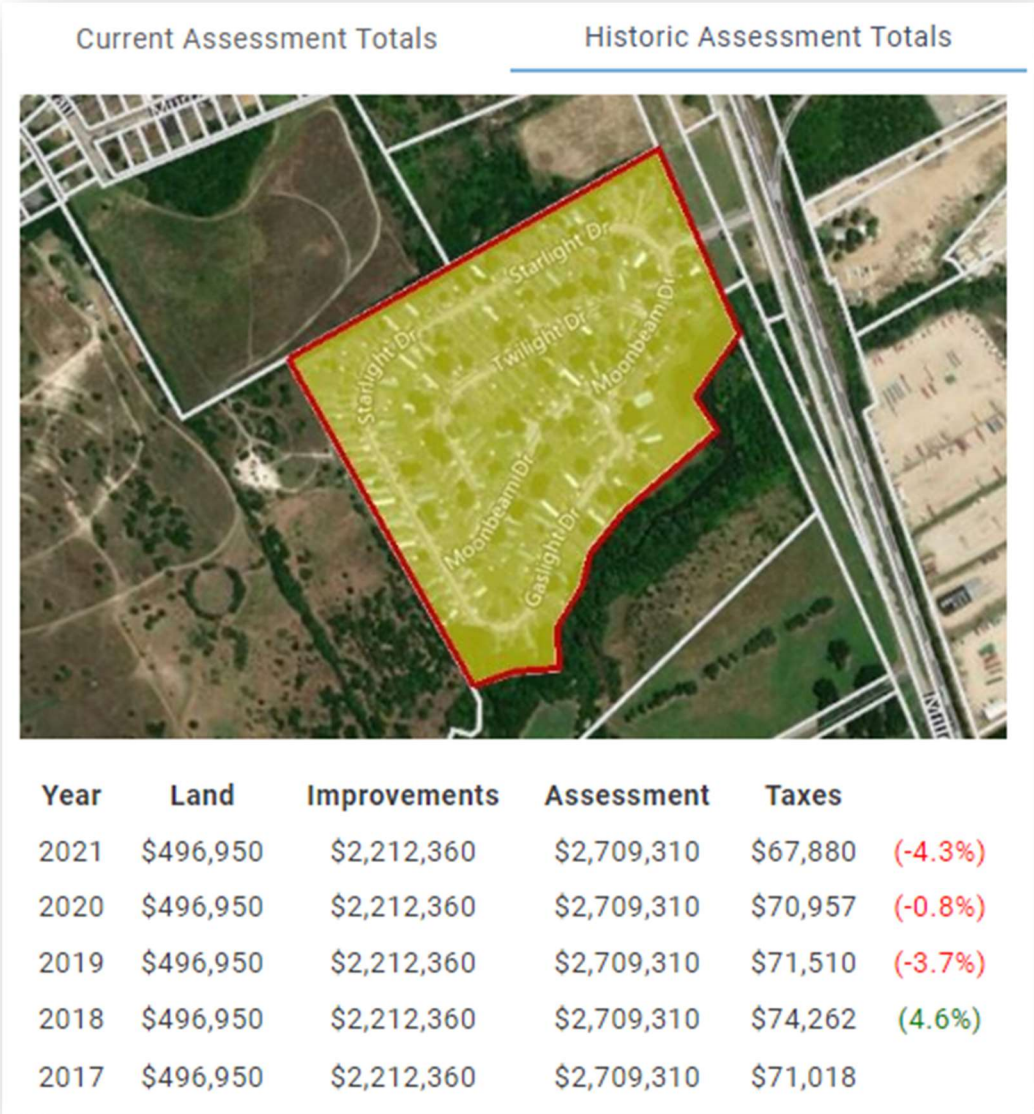
We've added "Boundaries | Parcels" layer to the Improvements Map

We've added several new fields to the Improvements section:

- Years Renovated
- Proportion Renovated
- Parking Comments

Research      Assessment - Tax History

Assessment and Tax history is displayed in the summary panel for deeper property analysis.



Research      Zoning – Permitted Uses

We’ve added a Permitted Uses field and link to Permitted Uses in the Zoning section. The LightBox fulfillment team will provide a summary of the Permitted uses for the property if the project is verified.

## Research

## Maps Enhancements

## Subject Map

- Added Tertiary Frontage fields and a Land Use field
- If all Parcels have the same Street Name as their address, Primary Frontage Street Name will automatically fill in.

## Flood Map

- Added a direct link to FEMA to verify results

## Traffic Map

- Added Secondary and Tertiary traffic count fields and their corresponding frontage street names for reference.
- Added Exposure field dropdowns: Access, View, Visibility, Corner








The image shows a vertical stack of four dropdown menus. Each menu has a title and a selected value. The first menu is titled 'Access' and has 'Very Good' selected. The second is titled 'View' and has 'Good' selected. The third is titled 'Visibility' and has 'Average' selected. The fourth is titled 'Corner' and has 'Is Not' selected. Each dropdown menu includes a small 'x' icon for clearing the selection and a downward arrow for opening the menu.

| Field      | Selected Value |
|------------|----------------|
| Access     | Very Good      |
| View       | Good           |
| Visibility | Average        |
| Corner     | Is Not         |

## Report Writer    New Fields

We've added new fields in Site, Improvements and Assessment. Assessment now has a Tax History section.

| Historical Assessment & Taxes |               |               |   |                 | Hide |
|-------------------------------|---------------|---------------|---|-----------------|------|
| Year                          | Land          | Improvements  | Assessment  | Taxes           |      |
| 2020                          | \$170,220,480 | \$541,160,650 | \$711,381,130  | \$11,488,485.00 | ▲    |
| 2019                          | \$157,419,870 | \$419,588,770 | \$577,008,640  | \$10,895,968.00 |      |
| 2018                          | \$157,419,870 | \$498,293,528 | \$655,713,398  | \$12,100,695.00 |      |
| 2017                          | \$0           | \$0           | \$712,611,733  | \$13,153,314.00 | ▼    |

Link to Assessor Website:  [https://www.taxpayerservicecenter.com/RP\\_Search.jsp?search\\_type=Assessment](https://www.taxpayerservicecenter.com/RP_Search.jsp?search_type=Assessment)

## WHAT'S NEXT?

The LightBox team is working on some great new features.

- Report Writer – Property Search Enhancements
- Report Writer – Job Manager Enhancements
- Research – REIS market/submarket data
- Research – More Demographics Attributes