

The following enhancements and/or bug fixes have been included in the release:

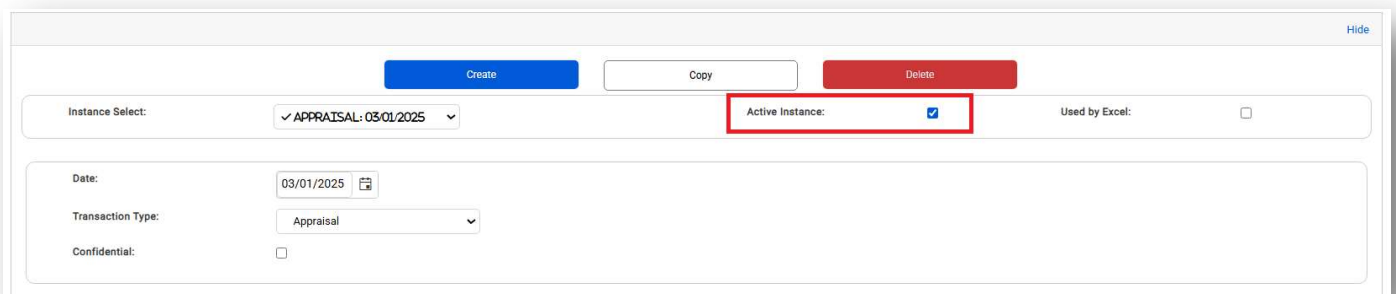
## NEW FEATURES AND ENHANCEMENTS

### Research Updated Logo

We've updated the LightBox logo in the Research application. Be on the lookout for more interface updates to further consistency with our parent brand.

### Report Writer Mark any instance as Active

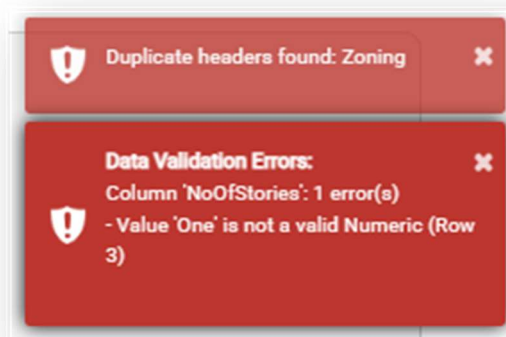
Now you can easily mark a transaction, comm lease or unit lease instance as active. *Active* instances indicate that the data presented is the most recent/relevant, while the *Used in Excel* indicator allows for any instance to be used in an analysis.



The screenshot shows a web form for creating or editing an instance. At the top, there are buttons for 'Create' (blue), 'Copy' (white), and 'Delete' (red). Below these is a section with three main controls: 'Instance Select:' with a dropdown menu showing '✓ APPRAISAL: 03/01/2025', 'Active Instance:' with a checked checkbox (highlighted by a red box), and 'Used by Excel:' with an unchecked checkbox. Below this is a section for 'Date:' (03/01/2025), 'Transaction Type:' (Appraisal), and 'Confidential:' (unchecked).

### Report Writer Data Import - Better Error reporting for Data uploads

Now toast notifications will provide clearer indications of what data is preventing a successful upload.



## BUG FIXES

- We've updated the data source for the Traffic map layer

## WHAT'S NEXT?

The LightBox team is working on some great new features.

- Research – Updated Interface to Parent Brand consistency
- Report Writer – Enhanced Job Editor
- Report Writer – Assign Comps to a Job from Property Search