



Installation Guide

For HyPanel Plus



Smarter Home
Sweeter Life

Welcome!

This guide applies to PS52V2-D1-US and PS52N-R1-US models of HyPanel Plus.

Contents

Before We Start	2
In the Box	3
Check Compatibility	4
Wiring	7
Installation	12
Get Help	16

Before We Start

Your first time installing this product may take up to 40 minutes. You'll get faster after each installation.



Warning

Installing HyPanel Plus involves handling high voltage wiring. Please be careful. To avoid serious personal injury, death, or property damage, turn OFF the power to the circuit and follow all safety precautions before proceeding.

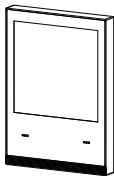
Working with electricity can be dangerous. The device must be installed within walls that are constructed of noncombustible materials, such as concrete.



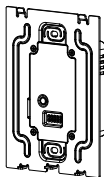
Warning

Keep the device and all its parts out of the reach of children. The small parts or accessories contained may be a choking hazard to them.

In The Box



HyPanel Plus **X 1**



Flush Mounted Module **x 1**



H2 Hex Key **X 1**

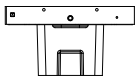


#6-32 x 1-1/4" Phillips Machine Screw **x2**

Check Compatibility

Product dimensions (mm)

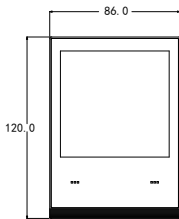
PS52V2



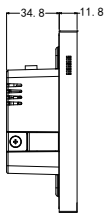
⑤ BOTTOM VIEW



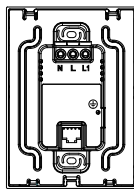
② RIGHT VIEW



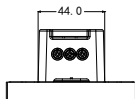
① FRONT VIEW



③ LEFT VIEW

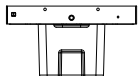


④ BACK VIEW

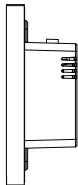


⑥ TOP VIEW

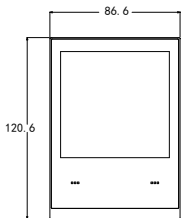
PS52N



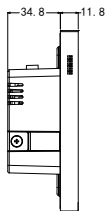
⑤ BOTTOM VIEW



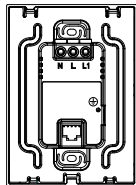
② RIGHT VIEW



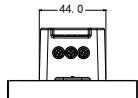
① FRONT VIEW



③ LEFT VIEW



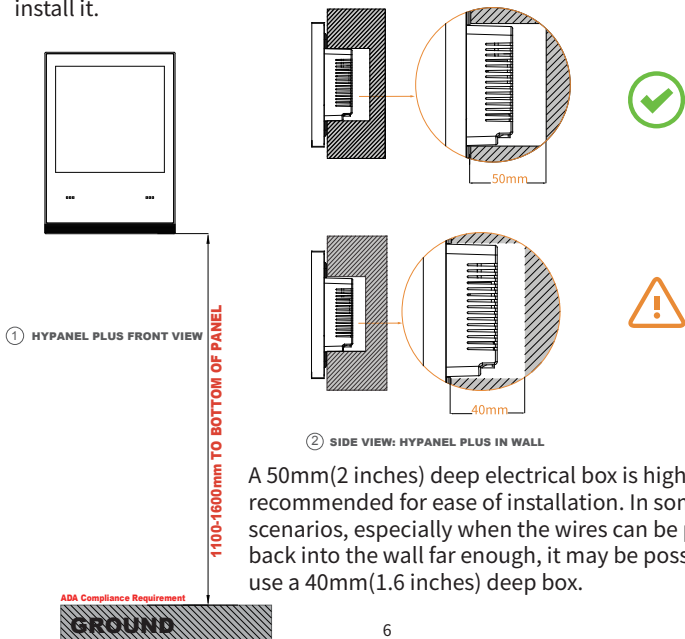
④ BACK VIEW



⑥ TOP VIEW

Working space

Make sure HyPanel Plus is compatible with the location where you want to install it.



Maximum load

PS52V2-D1-US

- The **total** load of the device(s) connected to HyPanel Plus must be less than 400W(**Max load**).
- The wattage of a resistive load appliance, e.g., an incandescent bulb, must be less than 200W at 110V or 400W at 220V.
- The wattage of a LED lamp a compact fluorescent lamp (CFL), must be less than 150W.

PS52N-R1-US

- The **total** load of the device(s) connected to HyPanel Plus must be less than 800W(**Max load**).
- The wattage of a resistive load appliance, e.g., an incandescent bulb, must be less than 400W at 110V or 800W at 220V.
- The wattage of a LED lamp a compact fluorescent lamp (CFL), must be less than 400W.

You must check the load compatibility before connecting other types of devices that are not mentioned above.

100~250VAC, 50/60Hz power required

HyPanel Plus can be used in countries with varying standard voltages, from 100V to 250V AC, at a frequency of either 50Hz or 60Hz.

Neutral wire required for installation

A neutral wire is required for the device to function properly.

Support Wi-Fi and Ethernet connections

HyPanel Plus can operate with both wireless and wired networks. A wired connection is recommended for greater reliability and faster data exchange.

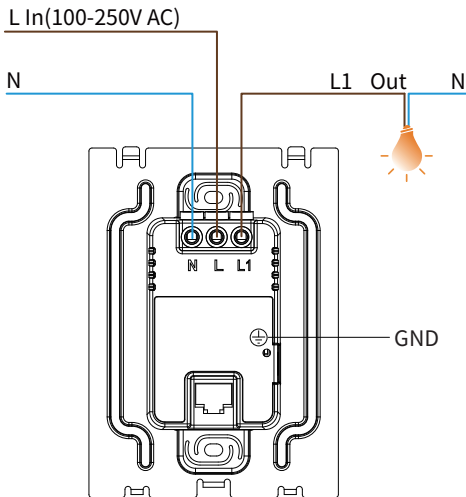
Wiring



Warning

Turn OFF the circuit breaker before wiring and proceeding!
Always use a voltage detector to verify the power is OFF
before wiring and installation!

Identify wires



- A Neutral wire(N) typically comes from the wall.
- The Line wire(L) provides 100-250 Volts of power to the HyPanel Plus.
- The Load wire (L1) carries power out to the connected device.
- The Ground wire (⊕) provides a path for electrical current to the earth to protect against electric shock.

Connect wires

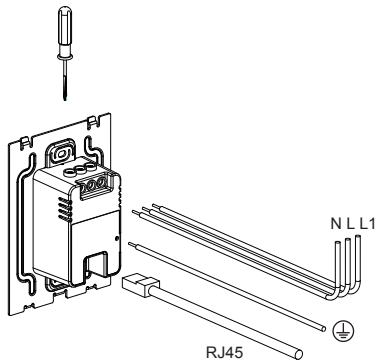
1 Strip and straighten wires



Wires connected to HyPanel Plus should be $1.5\text{mm}^2 \sim 2.5\text{mm}^2$ in size and have stripped and straight ends.

Remove the plastic sheathing of the wire, and make sure the exposed wire ends measure approximately 8 mm (5/16 inch) in length.

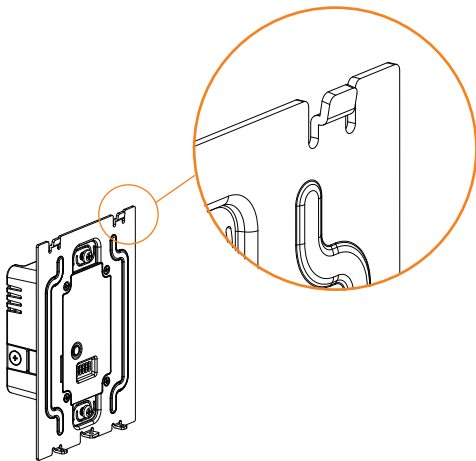
2 Connect all wires



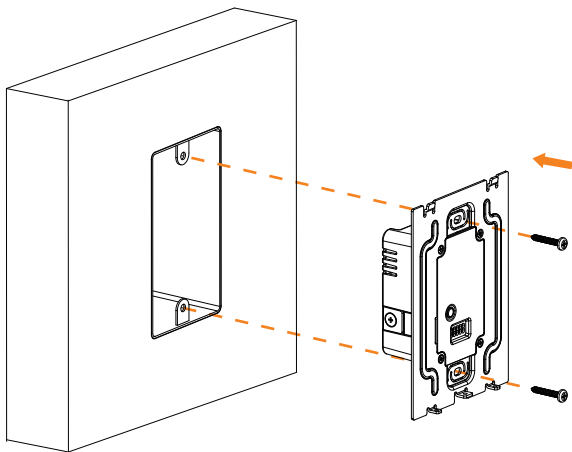
- Plug the wires to the corresponding terminals on the back of the flush mounted module.
- Tighten the screws clockwise with a Phillips screwdriver until wires are secure.
- Double check by gently tugging on each wire.
- Plug the RJ45 network cable into the Ethernet port if you need to use the wired network.

Installation

1 Install flush mounted module



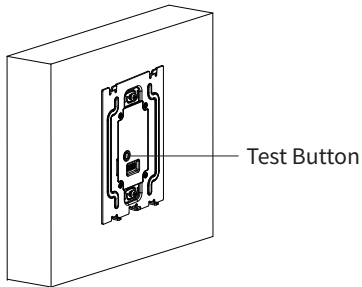
Make sure the flush mounted module is correctly oriented - The clips should be on the top and the screw holes at the bottom.



- Push all wires into the electrical box.
- Make sure the module is level and flush against the wall.
- Adjust the torque on the electric screwdriver to 5kgf.cm.
- Use the provided screws to attach the module to the wall, taking care not to over-tighten them.

2 Test connected devices

! Turn OFF the circuit breaker before you install the panel.



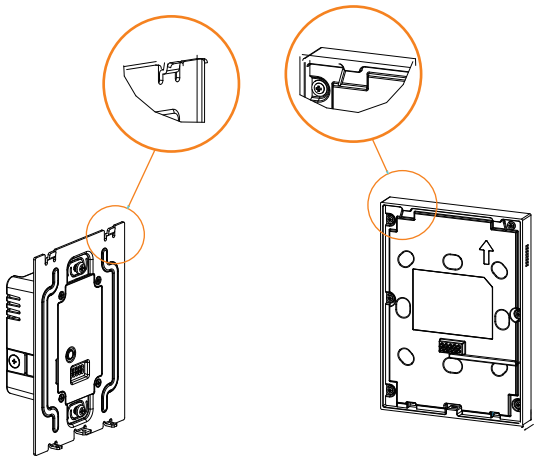
- ◆ Turn on the circuit breaker to provide power to the flush mounted module.
- ◆ Press the button on the module to check if the connected device can work properly.
 - Press the button once to turned on/off the device.
 - Long press the button to adjust the brightness of the device.

If the device cannot function, do NOT install the panel. Turn the power off and re-check the wire connections.

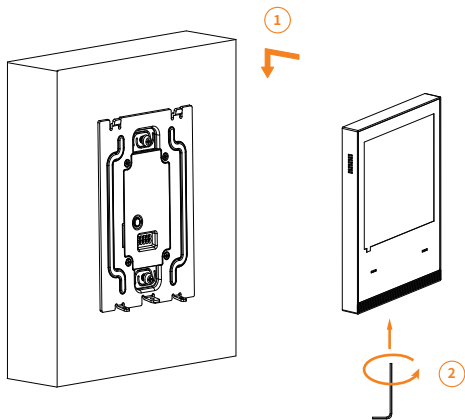
3 Attach panel



Turn OFF the circuit breaker before you install the panel.

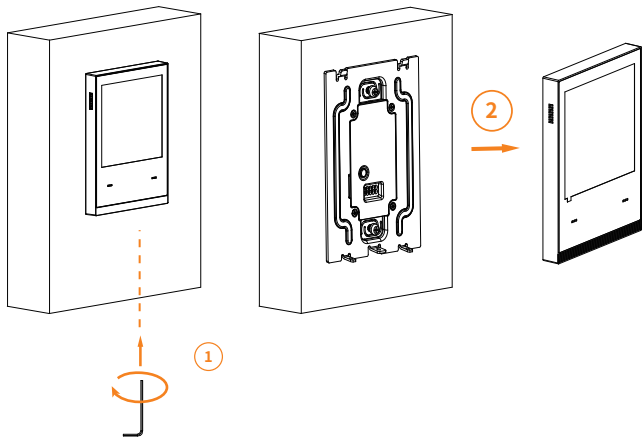


Line up the two clips on the flush mounted module with the notches on the panel. Snap the panel into place and press it down.



- Check the panel is properly clipped onto the module and is flush against the wall.
- Locate the screw hole at the bottom of the panel; there is a screw already in it.
- Tighten the screws with the included hex key.

If you need to remove the panel



- Turn the screw with the hex key until the bottom edge of the panel comes loose.
- Hold the panel's top with one hand, and pull the panel outwards from the bottom.

Congratulations!

You are done with the HyPanel Plus installation!

Start your smart home journey with Akubela now!

Get Help

For help or more assistance,
contact us at: <https://ticket.akuvox.com/>

For videos, guides, and additional product formation,
visit us at: <https://knowledge.akuvox.com>



YS0000507