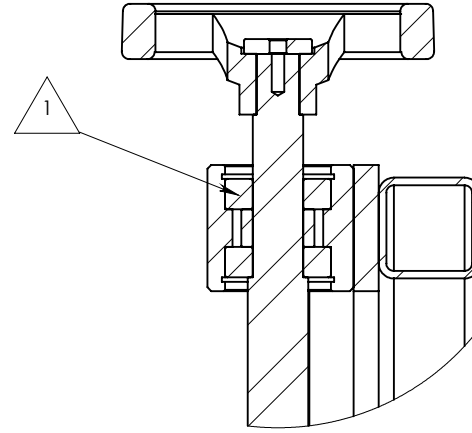
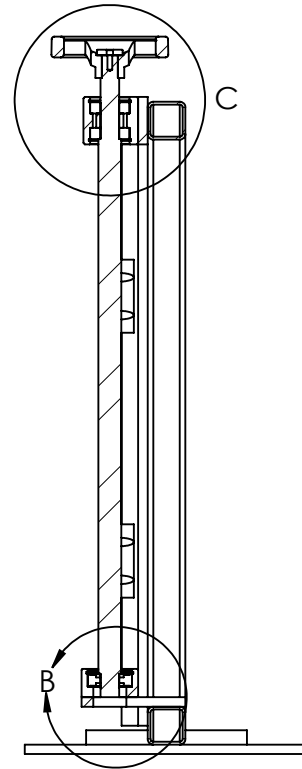
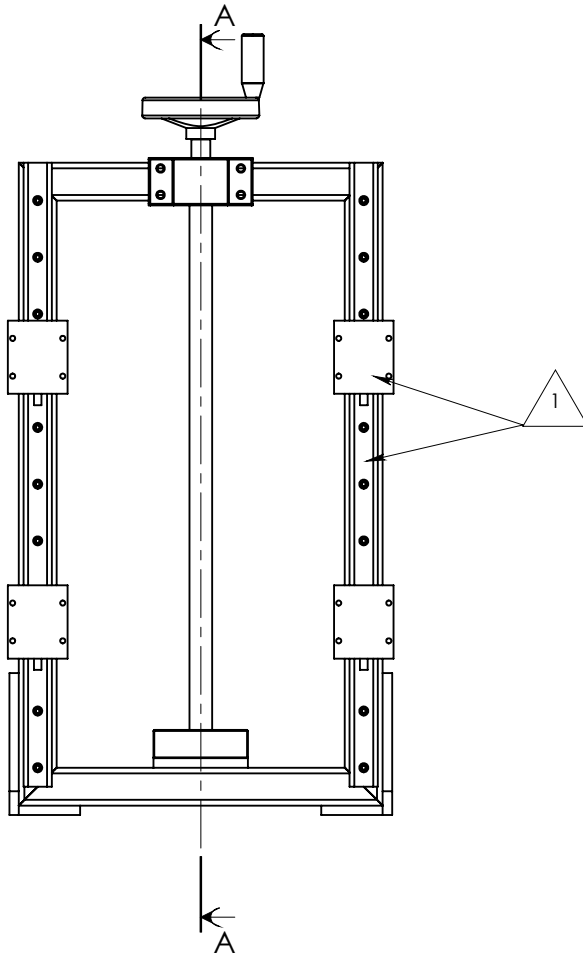


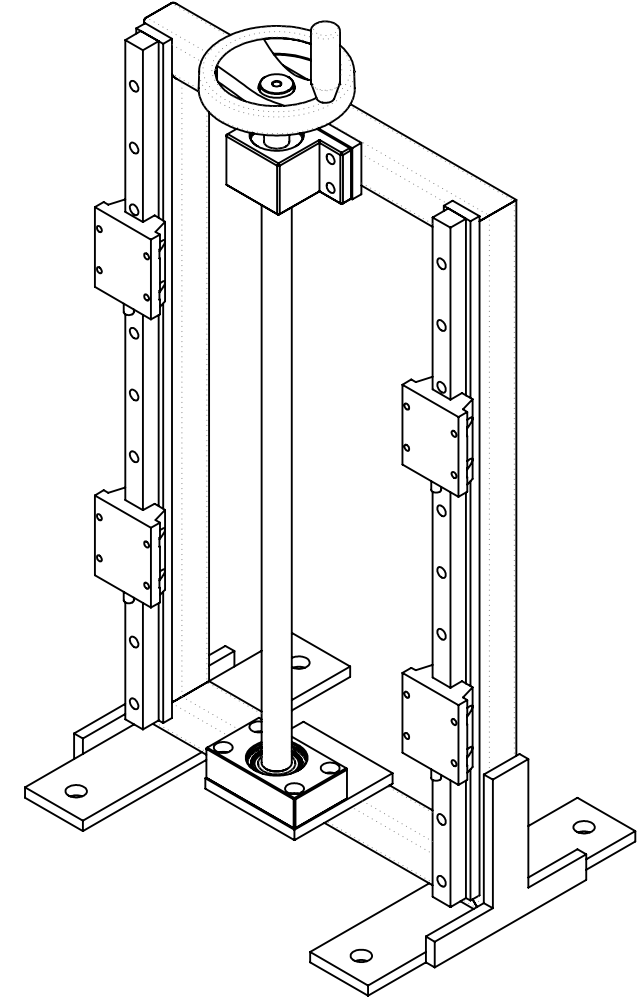
DETAIL B
SCALE 1 : 3



DETAIL C
SCALE 1 : 3



SECTION A-A
SCALE 1 : 8



SURFACE FINISH	
As Machined	
Acid	
Glass Bead	
Orbital Sand	
Powder Coat	
Zinc Plate	
Anodise	
Polished	
Scotch Brite	
DeBurr	
ENP	
Blackodise	



Bector Automation
RML India Pvt. Ltd.
Plot No. 24, Gat. No. 613/1,
Kurli, Tal. - Khed,
Dist. Pune 410 501,
Maharashtra, India

COPYRIGHT
© 2020 B.A.R. India Pvt. LTD.
THIS DRAWING MAY NOT BE
REPRODUCED OR TRANSMITTED
WITHOUT PRIOR PERMISSION

TOLERANCES		
NO DECIMAL PLACE	=0	+0.2 -0.2
ONE DECIMAL PLACE	=0.0	+0.1 -0.1
FABRICATION	=0	+1.0 -1.0
ALL DIMENSIONS ARE IN MILLIMETERS		

Sachet Cartoning MC
Flap Folding
Frame Assy

MATERIAL:				CREATED FROM:	
APPROX. FINISHED WT. (K.g.): 24.80		COMPONENT COLOUR:		DRAWING No.	REV.
				16049-1815	
				PRINTED: 01-07-2022	SHEET
				DESIGN: M.T	2/2
REV	BY	DATE	MODIFICATIONS		DRAWN: A.Varkhale